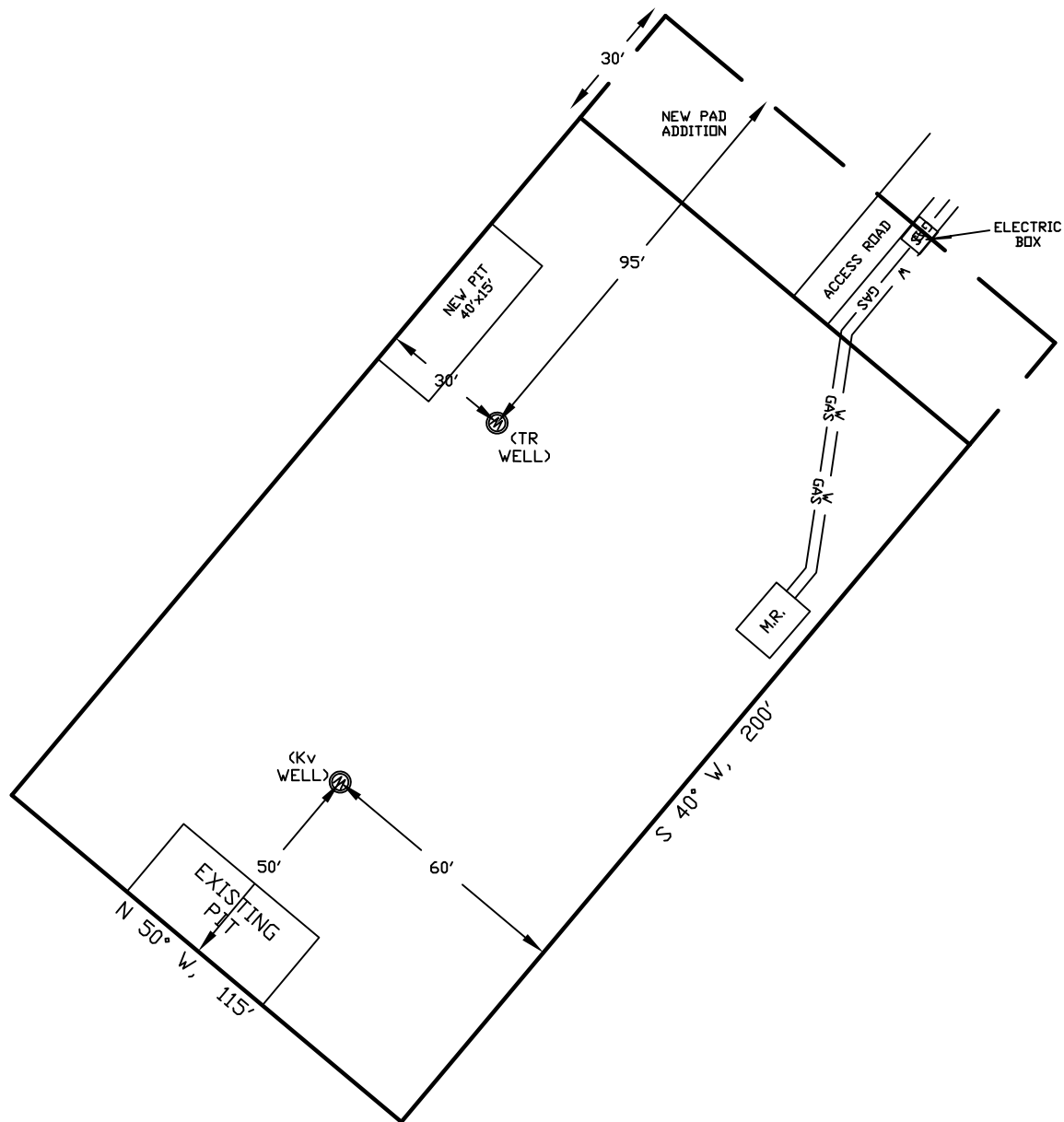


WELLSITE/PRODUCTION EQUIPMENT LAYOUT

OPERATOR: Pioneer Natural Resources

WELL NAME: Graham 32-22 TR

SWNE of SECTION 22 TOWNSHIP 32 S, RANGE 66 W OF THE 6TH P.M., IN LAS ANIMAS COUNTY



Maximum ground slope:
less than 10%

NOTE:

MUD AND BLOW PITS WILL BE CONVERTED TO LINED EVAPORATION PITS FOR PRODUCTION.

WELLHEADS ARE TYPICALLY PCP DRIVE HEADS

LEGEND:

- = WELLHEAD
- = EXISTING WELLPAD
- = FENCE (4 STRAND)
- = 4" GAS GATHERING LINE
- = 2" WATER LINE
- = COMBO METER RUN AND WATER/GAS SEPERATOR
- = GAS DRIVE SYSTEM

GRAPHIC SCALE



(IN FEET)

1 inch = 40 ft.

April 04, 2011
Date Platted

SHIELDS SURVEY L^{td}. C^o.
Raton, New Mexico 87740
(575)445-1232