

**CHEVRON - MID-CONTINENT EBIZ  
11111 S WILCREST DR - DO NOT MAIL  
HOUSTON, Texas**

SKR  
SKR 598-36-AV-05

**H&P 318/H&P/318**

## **Post Job Summary**

# **Cement Surface Casing**

Prepared for: RANDY MORGAN  
Date Prepared: 08/12/08  
Version: 1

Service Supervisor: CALDWELL, JEFFREY

Submitted by:

**HALLIBURTON**

## The Road to Excellence Starts with Safety

The Road to Excellence Starts With Safety			
Sold To #: 338668	Ship To #: 2666590	Quote #:	Sales Order #: 6097427
Customer: CHEVRON - MID-CONTINENT EBIZ		Customer Rep: Morgan, Randy	
Well Name: SKR		Well #: 598-36-AV-05	API/UWI #: 05-045-16287
Field: SKINNER RIDGE	City (SAP): PARACHUTE	County/Parish: Garfield	State: Colorado
Lat: N 39.573 deg. OR N 39 deg. 34 min. 21.367 secs.		Long: W 108.34 deg. OR W -109 deg. 39 min. 35.42 secs.	
Contractor: H&P 318		Rig/Platform Name/Num: H&P 318	
Job Purpose: Cement Surface Casing			
Well Type: Development Well		Job Type: Cement Surface Casing	
Sales Person: HARTLEY, RICHARD		Srvc Supervisor: CALDWELL, JEFFREY	MBU ID Emp #: 369111

## Job Personnel

HES Emp Name	Exp Hrs	Emp #	HES Emp Name	Exp Hrs	Emp #	HES Emp Name	Exp Hrs	Emp #
CALDWELL, JEFFREY S	4	369111	MILLER, KEVIN Paul	4	443040	REEVES, BRANDON W	4	287883
SMITH, DUSTIN Michael	4	418015						

## Equipment

HES Unit #	Distance-1 way	HES Unit #	Distance-1 way	HES Unit #	Distance-1 way	HES Unit #	Distance-1 way
10214529C	mile	10719782	mile	10829463	mile	10969711	mile

## Job Hours

Date	On Location Hours	Operating Hours	Date	On Location Hours	Operating Hours	Date	On Location Hours	Operating Hours
08/12/08	4	1						

TOTAL

Total is the sum of each column separately

## Job

Formation Name	Formation Depth (MD)	Top	Bottom	Form Type	Job depth MD	Job Depth TVD	Water Depth	Perforation Depth (MD)	From	To
				BHST	1258. ft	1258. ft				
						5. ft				

## Job Times

	Date	Time	Time Zone
Called Out	12 - Aug - 2008	07:00	MST
On Location	12 - Aug - 2008	12:00	MST
Job Started	12 - Aug - 2008	13:28	MST
Job Completed	12 - Aug - 2008	14:19	MST
Departed Loc	12 - Aug - 2008	16:00	MST

## Well Data

Description	New / Used	Max pressure psig	Size in	ID in	Weight lbm/ft	Thread	Grade	Top MD ft	Bottom MD ft	Top TVD ft	Bottom TVD ft
-------------	------------	-------------------	---------	-------	---------------	--------	-------	-----------	--------------	------------	---------------

Sales/Rental/3<sup>rd</sup> Party (HES)

Description	Qty	Qty uom	Depth	Supplier
PLUG,CMTG,TOP,8 5/8,HWE,7.20 MIN/8.09 MA	1	EA		

## Tools and Accessories

Type	Size	Qty	Make	Depth	Type	Size	Qty	Make	Depth	Type	Size	Qty	Make
Guide Shoe					Packer					Top Plug	8 5/8	1	
Float Shoe					Bridge Plug					Bottom Plug			
Float Collar					Retainer					SSR plug set			
Insert Float										Plug Container	8 5/8	1	
Stage Tool										Centralizers			

## Miscellaneous Materials

Gelling Agt	Conc	Surfactant	Conc	Acid Type	Qty	Conc	%
Treatment Fld	Conc	Inhibitor	Conc	Sand Type	Size	Qty	



Fluid Data									
Stage/Plug #: 1									
Fluid #	Stage Type	Fluid Name	Qty	Qty uom	Mixing Density lbm/gal	Yield ft <sup>3</sup> /sk	Mix Fluid Gal/sk	Rate bbl/min	Total Mix Fluid Gal/sk
1	Dye Spacer with PolyFlake		50.0	bbl	8.33	.0	.0	7.0	
2	Lead Cement	VERSACEM (TM) SYSTEM (452010)	200.0	sacks	12.3	2.38	13.75	7.0	13.41
	13.409 Gal	FRESH WATER							
3	Tail Cement	VERSACEM (TM) SYSTEM (452010)	175.0	sacks	12.8	2.11	11.75	5.0	11.45
	11.447 Gal	FRESH WATER							
4	Displacement		77.2	bbl	8.33	.0	.0	8.0	
Calculated Values		Pressures		Volumes					
Displacement	77.2	Shut In: Instant		Lost Returns	0	Cement Slurry	156.8	Pad	
Top Of Cement	SURFACE	5 Min		Cement Returns	35	Actual Displacement	76	Treatment	
Frac Gradient		15 Min		Spacers	50	Load and Breakdown		Total Job	282.8
Rates									
Circulating	RIG	Mixing	7	Displacement	8	Avg. Job	7.5		
Cement Left In Pipe	Amount	43.50ft	Reason	Shoe Joint					
Frac Ring # 1 @	ID	Frac ring # 2 @	ID	Frac Ring # 3 @	ID	Frac Ring # 4 @	ID		
The Information Stated Herein Is Correct				Customer Representative Signature					

*The Road to Excellence Starts with Safety*

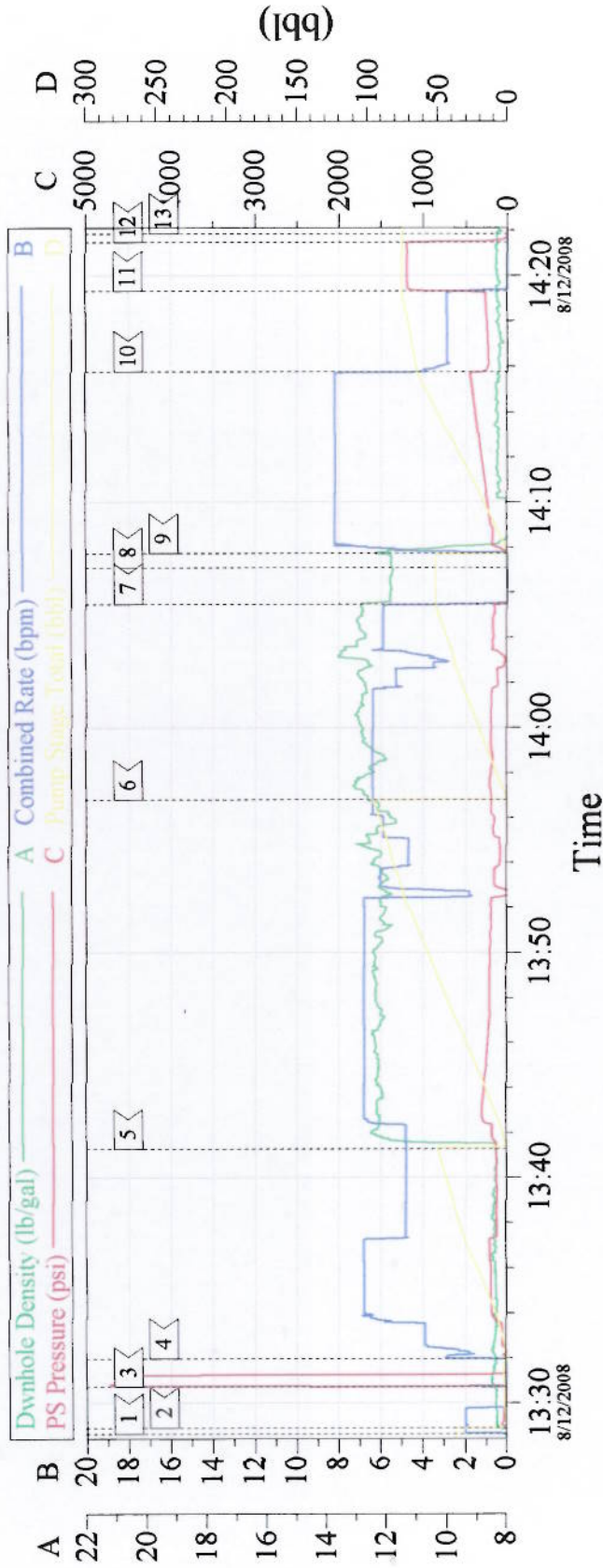
Sold To #: 338668		Ship To #: 2666590		Quote #:		Sales Order #: 6097427	
Customer: CHEVRON - MID-CONTINENT EBIZ				Customer Rep: Morgan, Randy			
Well Name: SKR			Well #: 598-36-AV-05		API/UWI #: 05-045-16287		
Field: SKINNER RIDGE		City (SAP): PARACHUTE		County/Parish: Garfield		State: Colorado	
Legal Description:							
Lat: N 39.573 deg. OR N 39 deg. 34 min. 21.367 secs.				Long: W 108.34 deg. OR W -109 deg. 39 min. 35.42 secs.			
Contractor: H&P 318			Rig/Platform Name/Num: H&P 318				
Job Purpose: Cement Surface Casing						Ticket Amount:	
Well Type: Development Well			Job Type: Cement Surface Casing				
Sales Person: HARTLEY, RICHARD			Srv Supervisor: CALDWELL, JEFFREY			MBU ID Emp #: 369111	

Activity Description	Date/Time	Cht #	Rate bbl/min	Volume bbl		Pressure psig		Comments
				Stage	Total	Tubing	Casing	
Call Out	08/12/2008 07:00							ELITE #12
Crew Leave Yard	08/12/2008 10:00							PLUG CONTAINER #D1041
Arrive At Loc	08/12/2008 12:00							CASING WAS STILL BEING RUN
Assessment Of Location Safety Meeting	08/12/2008 12:05							
Rig-Up Equipment	08/12/2008 12:10							
Safety Huddle	08/12/2008 13:15							HEAD WAS SECURED DOWN THROUGH OUT JOB.
Start Job	08/12/2008 13:28							TD:1270 TP:1258 SJ:43.50 MUD:9 PPG 12 1/4" HOLE
Prime Pumps	08/12/2008 13:28		2	2	2		40.0	H2O
Test Lines	08/12/2008 13:30					2000.0		
Pump Spacer 1	08/12/2008 13:31		7	50	50		180.0	H2O FIRST 30 BBLS, POLYFLAKE AND DYE LAST 20 BBLS.
Pump Lead Cement	08/12/2008 13:41		7	93.3	99		200.0	220 SKS 12.3 PPG 2.38 YIELD 13.75 GAL/SAK.
Pump Tail Cement	08/12/2008 13:56		5	63.5	54		180.0	169 SKS 12.8 PPG 2.11 YIELD 11.75 GAL/SAK. WATER KNIFE WOULD STICK OPEN ON AND OFF. WE HAD TO MIX BY HAND.
Shutdown	08/12/2008 14:05							



Activity Description	Date/Time	Cht #	Rate bbl/min	Volume bbl		Pressure psig		Comments
				Stage	Total	Tubing	Casing	
Drop Plug	08/12/2008 14:07							PLUG AWAY
Pump Displacement	08/12/2008 14:07		8	77.2	76		430.0	H2O
Slow Rate	08/12/2008 14:15		3	65	65		230.0	
Bump Plug	08/12/2008 14:19		3	77.2	76		1200.0	PLUG LANDED
Check Floats	08/12/2008 14:21							FLOATS HELD 1/2 BBL BACK. GOOD CIRCULATION THROUGH OUT JOB.
End Job	08/12/2008 14:21							THANK YOU FOR CHOOSING HALLIBURTON JEFF CALDWELL AND CREW.

# 8 5/8" Surface



Event Log			
Intersection		Intersection	
1 < START JOB	13:28:38 -12.00	2 < PRIME LINES	13:28:54 19.20
3 < TEST LINES	13:30:42 31.87	4 < PUMP SPACER	13:31:57 -33.53
5 < PUMP LEAD CEMENT	13:41:15 138.6	6 < PUMP TAIL CEMENT	13:56:47 195.5
7 < SHUT DOWN	14:05:29 48.47	8 < DROP TOP PLUG	14:07:05 -35.00
9 < PUMP DISPLACEMENT	14:07:42 -17.09	10 < SLOW RATE	14:15:47 289.1
11 < BUMP PLUG	14:19:19 700.8	12 < CHECK FLOATS/FLOATS HELD	14:21:29 1071
13 < END JOB	14:21:50 12.43		

Customer: Chevron	Job Date: 08/12/08	Ticket #: 6097427
Well Number: SKR 598-36-AV-05	Job Type: 8 5/8 Surface	ADC Used: Yes
Supervisor: Jeff Caldwell	Company Rep.: Randy Morgan	Pump/Operator: Elite 12/Kevin Miller