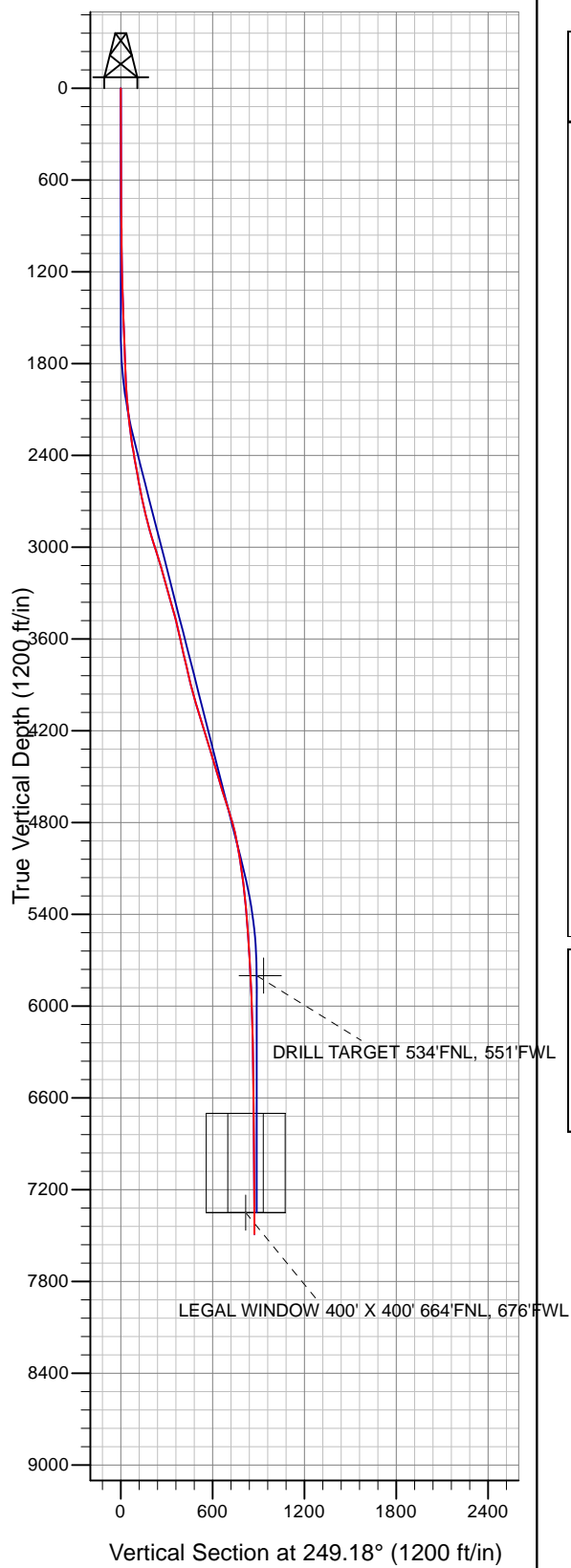
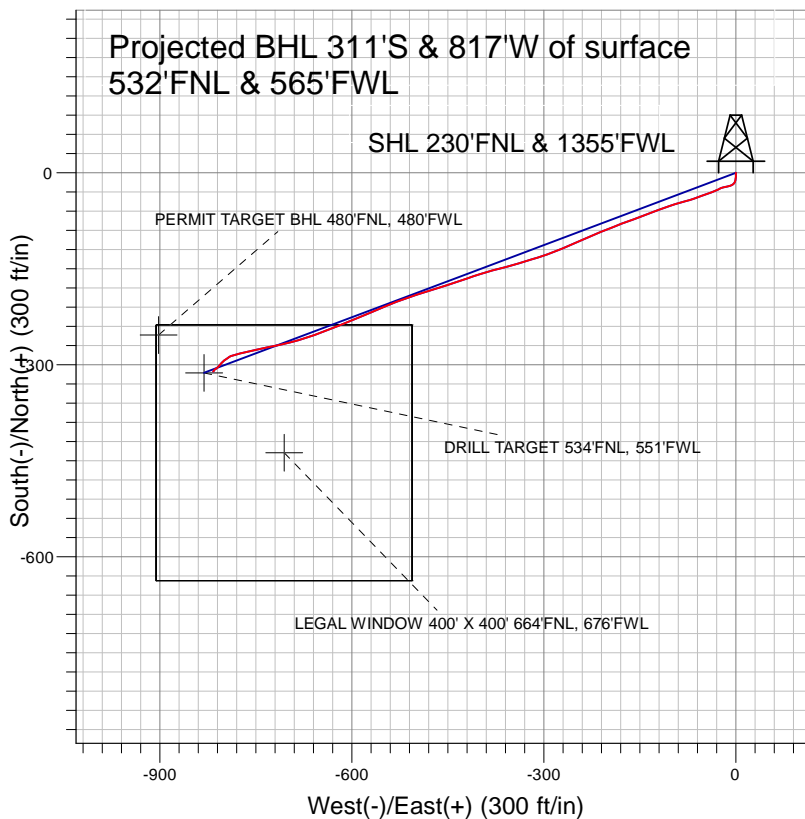


Surface Location: SRC TK Pad Sec.36-T7N-R66W
North American Datum 1983 , US State Plane 1983 , Colorado Northern Zone
Ground Elevation: 4856.0

+N/-S+E/-W	Northing	Easting	Latitude	Longitude	Slot
0.0	0.0	1439912.053213936.01	40° 32' 18.276 N	104° 43' 48.990 W	
		Original Well Elev	WELL @ 4869.0ft (Original Well Elev)		



Synergy Resources



LEGEND

- ◆ SRC TK 11-36D, SRC TK 11-36D, SRC TK 11-36D Plan #1 V0
- ▣ SRC TK 11-36D
- Survey #1

Final Survey Plot

Projected Final Survey -
7591'MD & 7491'TVD @ 874' VS
0.4 deg Inc 224.2 deg AZ

Project: SEC.36-T7N-R66W
Site: SRC TK Pad Sec.36-T7N-R66W
Well: SRC TK 11-36D
Plan: SRC TK 11-36D



Synergy Resources

SEC.36-T7N-R66W

SRC TK Pad Sec.36-T7N-R66W

SRC TK 11-36D

SRC TK 11-36D

Survey: Survey #1

Standard Survey Report

26 April, 2010

Company:	Synergy Resources	Local Co-ordinate Reference:	Well SRC TK 11-36D
Project:	SEC.36-T7N-R66W	TVD Reference:	WELL @ 4869.0ft (Original Well Elev)
Site:	SRC TK Pad Sec.36-T7N-R66W	MD Reference:	WELL @ 4869.0ft (Original Well Elev)
Well:	SRC TK 11-36D	North Reference:	True
Wellbore:	SRC TK 11-36D	Survey Calculation Method:	Minimum Curvature
Design:	SRC TK 11-36D	Database:	EDM den0-adp01 Server Data

Project	SEC.36-T7N-R66W, Weld County, Colorado		
Map System:	US State Plane 1983	System Datum:	Mean Sea Level
Geo Datum:	North American Datum 1983		Using Well Reference Point
Map Zone:	Colorado Northern Zone		Using geodetic scale factor

Site		SRC TK Pad Sec.36-T7N-R66W			
Site Position:		Northing:		1,439,912.06ft	
From:	Lat/Long	Easting:		Longitude:	
		3,213,936.01ft		40° 32' 18.276 N	
Position Uncertainty:		Slot Radius:		104° 43' 48.990 W	
0.0 ft		"		Grid Convergence:	
				0.50 °	

Well	SRC TK 11-36D					
Well Position	+N/-S	0.0 ft	Northing:	1,439,912.05 ft	Latitude:	40° 32' 18.276 N
	+E/-W	0.0 ft	Easting:	3,213,936.01 ft	Longitude:	104° 43' 48.990 W
Position Uncertainty		0.0 ft	Wellhead Elevation:	ft	Ground Level:	4,856.0 ft

Wellbore	SRC TK 11-36D				
Magnetics	Model Name	Sample Date	Declination (°)	Dip Angle (°)	Field Strength (nT)
	IGRF200510	3/19/2009	9.13	67.25	53,461
	IGRF200510	12/31/2009	9.02	67.23	53,380

Design	SRC TK 11-36D			
Audit Notes:				
Version:	1.0	Phase:	ACTUAL	Tie On Depth: 0.0
Vertical Section:	Depth From (TVD) (ft)	+N/-S (ft)	+E/-W (ft)	Direction (°)
	0.0	0.0	0.0	249.18

Survey Program		Date	4/26/2010	
From (ft)	To (ft)	Survey (Wellbore)	Tool Name	Description
648.0	7,591.0	Survey #1 (SRC TK 11-36D)	MWD	MWD - Standard

Survey	Wellbore Data									
	Measured Depth (ft)	Inclination (°)	Azimuth (°)	Vertical Depth (ft)	+N-S (ft)	+E-W (ft)	Vertical Section (ft)	Dogleg Rate (°/100ft)	Build Rate (°/100ft)	Turn Rate (°/100ft)
	0.0	0.00	0.00	0.0	0.0	0.0	0.0	0.00	0.00	0.00
	648.0	0.90	178.70	648.0	-5.1	0.1	1.7	0.14	0.14	0.00
	741.0	0.90	186.70	741.0	-6.5	0.0	2.3	0.14	0.00	8.60
	835.0	1.10	192.70	834.9	-8.2	-0.2	3.1	0.24	0.21	6.38
	929.0	1.20	186.90	928.9	-10.0	-0.6	4.1	0.16	0.11	-6.17
	1,022.0	1.20	194.00	1,021.9	-11.9	-0.9	5.1	0.16	0.00	7.63
	1,116.0	1.20	201.10	1,115.9	-13.8	-1.5	6.3	0.16	0.00	7.55
	1,210.0	1.50	210.00	1,209.9	-15.8	-2.5	7.9	0.39	0.32	9.47
	1,304.0	1.60	227.90	1,303.8	-17.7	-4.1	10.1	0.52	0.11	19.04
	1,397.0	1.90	245.00	1,396.8	-19.3	-6.4	12.8	0.64	0.32	18.39
	1,491.0	2.20	250.60	1,490.7	-20.5	-9.5	16.2	0.38	0.32	5.96
	1,585.0	2.30	260.90	1,584.7	-21.4	-13.1	19.9	0.44	0.11	10.96

Company:	Synergy Resources	Local Co-ordinate Reference:	Well SRC TK 11-36D
Project:	SEC.36-T7N-R66W	TVD Reference:	WELL @ 4869.0ft (Original Well Elev)
Site:	SRC TK Pad Sec.36-T7N-R66W	MD Reference:	WELL @ 4869.0ft (Original Well Elev)
Well:	SRC TK 11-36D	North Reference:	True
Wellbore:	SRC TK 11-36D	Survey Calculation Method:	Minimum Curvature
Design:	SRC TK 11-36D	Database:	EDM den0-adp01 Server Data

Survey

Measured Depth (ft)	Inclination (°)	Azimuth (°)	Vertical Depth (ft)	+N/-S (ft)	+E/-W (ft)	Vertical Section (ft)	Dogleg Rate (°/100ft)	Build Rate (°/100ft)	Turn Rate (°/100ft)
1,678.0	2.40	258.30	1,677.6	-22.1	-16.8	23.6	0.16	0.11	-2.80
1,772.0	1.90	258.10	1,771.5	-22.8	-20.3	27.1	0.53	-0.53	-0.21
1,866.0	2.20	244.60	1,865.4	-23.9	-23.5	30.4	0.60	0.32	-14.36
1,959.0	3.60	240.70	1,958.3	-26.1	-27.6	35.1	1.52	1.51	-4.19
2,053.0	5.00	250.90	2,052.1	-28.9	-34.1	42.1	1.69	1.49	10.85
2,147.0	6.00	250.10	2,145.6	-31.9	-42.5	51.1	1.07	1.06	-0.85
2,240.0	7.20	247.10	2,238.0	-35.8	-52.5	61.8	1.34	1.29	-3.23
2,334.0	8.70	252.90	2,331.1	-40.2	-64.7	74.8	1.81	1.60	6.17
2,428.0	9.80	254.70	2,423.9	-44.4	-79.2	89.8	1.21	1.17	1.91
2,521.0	10.30	253.40	2,515.5	-48.9	-94.8	106.0	0.59	0.54	-1.40
2,615.0	11.10	248.50	2,607.8	-54.6	-111.3	123.4	1.29	0.85	-5.21
2,709.0	12.00	250.60	2,699.9	-61.2	-128.9	142.2	1.06	0.96	2.23
2,803.0	13.60	248.70	2,791.6	-68.4	-148.4	163.1	1.76	1.70	-2.02
2,896.0	15.60	250.10	2,881.6	-76.6	-170.4	186.5	2.18	2.15	1.51
2,990.0	18.10	248.40	2,971.5	-86.3	-195.9	213.8	2.71	2.66	-1.81
3,084.0	17.00	247.40	3,061.2	-97.0	-222.1	242.1	1.21	-1.17	-1.06
3,177.0	15.70	245.30	3,150.4	-107.5	-246.1	268.2	1.54	-1.40	-2.26
3,271.0	15.50	247.10	3,240.9	-117.7	-269.2	293.5	0.56	-0.21	1.91
3,365.0	16.60	251.10	3,331.3	-126.9	-293.5	319.4	1.66	1.17	4.26
3,458.0	15.40	252.60	3,420.7	-134.9	-317.9	345.1	1.36	-1.29	1.61
3,552.0	12.90	253.00	3,511.8	-141.7	-339.8	368.0	2.66	-2.66	0.43
3,646.0	12.80	256.30	3,603.4	-147.2	-360.0	388.8	0.79	-0.11	3.51
3,739.0	12.80	254.80	3,694.1	-152.4	-379.9	409.3	0.36	0.00	-1.61
3,833.0	12.90	252.50	3,785.8	-158.3	-400.0	430.1	0.55	0.11	-2.45
3,927.0	14.20	249.80	3,877.2	-165.4	-420.8	452.1	1.54	1.38	-2.87
4,021.0	15.16	253.09	3,968.1	-173.0	-443.4	475.9	1.35	1.02	3.50
4,114.0	16.20	252.70	4,057.6	-180.3	-467.4	501.0	1.12	1.12	-0.42
4,208.0	17.80	251.00	4,147.5	-188.9	-493.5	528.4	1.78	1.70	-1.81
4,302.0	17.40	251.40	4,237.1	-198.1	-520.4	556.8	0.44	-0.43	0.43
4,395.0	16.90	247.10	4,326.0	-207.8	-546.0	584.2	1.47	-0.54	-4.62
4,489.0	16.30	246.50	4,416.1	-218.4	-570.7	611.1	0.66	-0.64	-0.64
4,583.0	16.90	248.30	4,506.2	-228.7	-595.5	637.9	0.84	0.64	1.91
4,676.0	17.10	248.30	4,595.1	-238.7	-620.8	665.1	0.22	0.22	0.00
4,770.0	18.30	248.60	4,684.6	-249.2	-647.4	693.7	1.28	1.28	0.32
4,864.0	16.70	252.70	4,774.3	-258.6	-674.0	721.9	2.15	-1.70	4.36
4,958.0	12.80	255.90	4,865.2	-265.2	-697.0	745.7	4.24	-4.15	3.40
5,052.0	10.20	258.80	4,957.3	-269.3	-715.3	764.3	2.83	-2.77	3.09
5,146.0	8.60	258.00	5,050.0	-272.4	-730.3	779.4	1.71	-1.70	-0.85
5,239.0	7.90	259.20	5,142.1	-275.1	-743.4	792.6	0.78	-0.75	1.29
5,333.0	7.00	255.60	5,235.3	-277.7	-755.3	804.7	1.08	-0.96	-3.83
5,427.0	5.60	258.10	5,328.7	-280.1	-765.3	814.9	1.52	-1.49	2.66
5,521.0	4.70	255.70	5,422.3	-282.0	-773.5	823.2	0.98	-0.96	-2.55
5,612.0	4.00	255.80	5,513.1	-283.7	-780.2	830.1	0.77	-0.77	0.11
5,706.0	3.70	252.70	5,606.8	-285.4	-786.3	836.4	0.39	-0.32	-3.30
5,800.0	3.40	236.90	5,700.7	-287.8	-791.5	842.1	1.08	-0.32	-16.81
5,894.0	3.20	233.80	5,794.5	-290.9	-796.0	847.4	0.29	-0.21	-3.30
5,901.8	3.15	233.66	5,802.2	-291.1	-796.3	847.8	0.65	-0.64	-1.84
DRILL TARGET 534'FNL, 551'FWL									
5,902.6	3.14	233.64	5,803.1	-291.1	-796.4	847.8	0.65	-0.64	-1.88
PERMIT TARGET BHL 480'FNL, 480'FWL									
5,988.0	2.60	231.70	5,888.4	-293.7	-799.8	852.0	0.65	-0.64	-2.27
6,081.0	2.10	225.80	5,981.3	-296.2	-802.7	855.5	0.60	-0.54	-6.34
6,175.0	1.70	225.10	6,075.3	-298.4	-804.9	858.4	0.43	-0.43	-0.74
6,269.0	1.60	220.50	6,169.2	-300.4	-806.7	860.8	0.18	-0.11	-4.89

Company: Synergy Resources
Project: SEC.36-T7N-R66W
Site: SRC TK Pad Sec.36-T7N-R66W
Well: SRC TK 11-36D
Wellbore: SRC TK 11-36D
Design: SRC TK 11-36D

Local Co-ordinate Reference: Well SRC TK 11-36D
TVD Reference: WELL @ 4869.0ft (Original Well Elev)
MD Reference: WELL @ 4869.0ft (Original Well Elev)
North Reference: True
Survey Calculation Method: Minimum Curvature
Database: EDM den0-adp01 Server Data

Survey

Measured Depth (ft)	Inclination (°)	Azimuth (°)	Vertical Depth (ft)	+N/-S (ft)	+E/-W (ft)	Vertical Section (ft)	Dogleg Rate (°/100ft)	Build Rate (°/100ft)	Turn Rate (°/100ft)
6,425.0	1.10	218.10	6,325.2	-303.2	-809.1	864.0	0.32	-0.32	-1.54
6,581.0	0.70	228.70	6,481.2	-305.0	-810.7	866.2	0.28	-0.26	6.79
6,737.0	0.50	240.30	6,637.1	-306.0	-812.0	867.7	0.15	-0.13	7.44
6,894.0	0.40	239.60	6,794.1	-306.6	-813.1	869.0	0.06	-0.06	-0.45
7,050.0	0.40	232.60	6,950.1	-307.2	-814.0	870.0	0.03	0.00	-4.49
7,206.0	0.60	216.50	7,106.1	-308.2	-814.9	871.2	0.16	0.13	-10.32
7,362.0	0.40	210.40	7,262.1	-309.3	-815.7	872.3	0.13	-0.13	-3.91
7,450.1	0.40	217.04	7,350.2	-309.8	-816.0	872.8	0.05	0.00	7.54
LEGAL WINDOW 400' X 400' 664'FNL, 676'FWL									
7,545.0	0.40	224.20	7,445.1	-310.3	-816.4	873.4	0.05	0.00	7.54
7,591.0	0.40	224.20	7,491.1	-310.6	-816.6	873.7	0.00	0.00	0.00

Wellbore Targets

Target Name	- hit/miss target	- Shape	Dip Angle (°)	Dip Dir. (°)	TVD (ft)	+N/-S (ft)	+E/-W (ft)	Northing (ft)	Easting (ft)	Latitude	Longitude
PERMIT TARGET BH			0.00	0.00	5,800.0	-253.5	-901.9	1,439,650.72	3,213,036.34	40° 32' 15.771 N	104° 44' 0.672 W
- survey misses target center by 112.1ft at 5902.6ft MD (5803.1 TVD, -291.1 N, -796.4 E)											
- Point											
DRILL TARGET 534'F			0.00	0.00	5,800.0	-312.5	-830.9	1,439,592.36	3,213,107.88	40° 32' 15.188 N	104° 43' 59.752 W
- survey misses target center by 40.7ft at 5901.8ft MD (5802.2 TVD, -291.1 N, -796.3 E)											
- Point											
LEGAL WINDOW 400			0.00	0.00	7,350.0	-437.5	-705.9	1,439,468.45	3,213,233.96	40° 32' 13.953 N	104° 43' 58.133 W
- survey misses target center by 168.6ft at 7450.1ft MD (7350.2 TVD, -309.8 N, -816.0 E)											
- Rectangle (sides W400.0 H400.0 D0.0)											

Checked By: _____ Approved By: _____ Date: _____