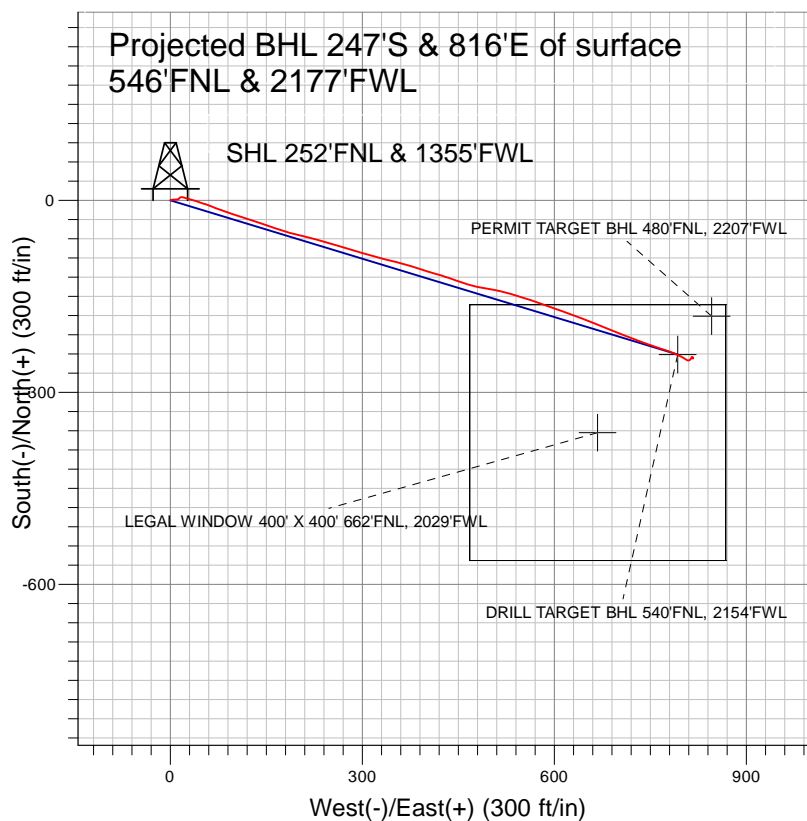


Synergy Resources



LEGEND

- SRC TK 21-36D, SRC TK 21-36D, SRC TK 21-36D Plan #1 V0
- SRC TK 21-36D

Final Survey Plot

Projected Final Survey -
7594'MD & 7497'TVD @ 853' VS
0.4 deg Inc 237.9 deg AZ

Project: SEC.36-T7N-R66W
Site: SRC TK Pad Sec.36-T7N-R66W
Well: SRC TK 21-36D
Plan: SRC TK 21-36D



Synergy Resources

SEC.36-T7N-R66W

SRC TK Pad Sec.36-T7N-R66W

SRC TK 21-36D

SRC TK 21-36D

Design: SRC TK 21-36D

Standard Survey Report

27 April, 2010

Company:	Synergy Resources	Local Co-ordinate Reference:	Well SRC TK 21-36D
Project:	SEC.36-T7N-R66W	TVD Reference:	WELL @ 4869.0ft (Original Well Elev)
Site:	SRC TK Pad Sec.36-T7N-R66W	MD Reference:	WELL @ 4869.0ft (Original Well Elev)
Well:	SRC TK 21-36D	North Reference:	True
Wellbore:	SRC TK 21-36D	Survey Calculation Method:	Minimum Curvature
Design:	SRC TK 21-36D	Database:	EDM den0-adp01 Server Data

Project	SEC.36-T7N-R66W, Weld County, Colorado		
Map System:	US State Plane 1983	System Datum:	Mean Sea Level
Geo Datum:	North American Datum 1983		Using Well Reference Point
Map Zone:	Colorado Northern Zone		Using geodetic scale factor

Site		SRC TK Pad Sec.36-T7N-R66W			
Site Position:		Northing:	1,439,912.06ft	Latitude:	40° 32' 18.276 N
From:	Lat/Long	Easting:	3,213,936.01 ft	Longitude:	104° 43' 48.990 W
Position Uncertainty:	0.0 ft	Slot Radius:	"	Grid Convergence:	0.50 °

Well	SRC TK 21-36D					
Well Position	+N/-S	0.0 ft	Northing:	1,439,890.18 ft	Latitude:	40° 32' 18.060 N
	+E/-W	0.0 ft	Easting:	3,213,934.53 ft	Longitude:	104° 43' 49.012 W
Position Uncertainty		0.0 ft	Wellhead Elevation:	ft	Ground Level:	4,856.0 ft

Wellbore	SRC TK 21-36D				
Magnetics	Model Name	Sample Date	Declination (°)	Dip Angle (°)	Field Strength (nT)
	IGRF200510	3/23/2009	9.12	67.25	53,460
	IGRF200510	12/31/2009	9.02	67.23	53,380

Design	SRC TK 21-36D			
Audit Notes:				
Version:	1.0	Phase:	ACTUAL	Tie On Depth: 0.0
Vertical Section:	Depth From (TVD) (ft)	+N/-S (ft)	+E/-W (ft)	Direction (°)
	0.0	0.0	0.0	106.85

Survey Program		Date		
From (ft)	To (ft)	Survey (Wellbore)	Tool Name	Description
647.0	7,594.0	Survey #1 (SRC TK 21-36D)	MWD	MWD - Standard

Survey										
	Measured Depth (ft)	Inclination (°)	Azimuth (°)	Vertical Depth (ft)	+N-S (ft)	+E-W (ft)	Vertical Section (ft)	Dogleg Rate (°/100ft)	Build Rate (°/100ft)	Turn Rate (°/100ft)
Survey A	0.0	0.00	0.00	0.0	0.0	0.0	0.0	0.00	0.00	0.00
	647.0	0.80	75.40	647.0	1.1	4.4	3.9	0.12	0.12	0.00
	740.0	0.90	89.50	740.0	1.3	5.7	5.1	0.25	0.11	15.16
	834.0	0.90	88.70	834.0	1.3	7.2	6.5	0.01	0.00	-0.85
	928.0	0.90	87.40	927.9	1.4	8.7	7.9	0.02	0.00	-1.38
	1,021.0	0.80	87.30	1,020.9	1.4	10.1	9.2	0.11	-0.11	-0.11
	1,115.0	0.80	87.40	1,114.9	1.5	11.4	10.4	0.00	0.00	0.11
	1,209.0	1.00	58.70	1,208.9	2.0	12.7	11.6	0.52	0.21	-30.53
	1,302.0	1.30	27.70	1,301.9	3.3	13.9	12.4	0.73	0.32	-33.33
	1,396.0	1.50	61.60	1,395.9	4.8	15.5	13.4	0.89	0.21	36.06
	1,490.0	1.80	101.10	1,489.8	5.1	18.0	15.8	1.22	0.32	42.02
	1,583.0	3.20	107.80	1,582.7	4.1	21.9	19.8	1.54	1.51	7.20

Company:	Synergy Resources	Local Co-ordinate Reference:	Well SRC TK 21-36D
Project:	SEC.36-T7N-R66W	TVD Reference:	WELL @ 4869.0ft (Original Well Elev)
Site:	SRC TK Pad Sec.36-T7N-R66W	MD Reference:	WELL @ 4869.0ft (Original Well Elev)
Well:	SRC TK 21-36D	North Reference:	True
Wellbore:	SRC TK 21-36D	Survey Calculation Method:	Minimum Curvature
Design:	SRC TK 21-36D	Database:	EDM den0-adp01 Server Data

Survey										
Measured Depth (ft)	Inclination (°)	Azimuth (°)	Vertical Depth (ft)	+N/-S (ft)	+E/-W (ft)	Vertical Section (ft)	Dogleg Rate (°/100ft)	Build Rate (°/100ft)	Turn Rate (°/100ft)	
1,677.0	4.80	103.50	1,676.5	2.4	28.2	26.4	1.73	1.70	-4.57	
1,771.0	7.00	108.30	1,770.0	-0.4	37.5	36.0	2.40	2.34	5.11	
1,865.0	8.50	108.30	1,863.1	-4.3	49.5	48.7	1.60	1.60	0.00	
1,958.0	10.00	110.20	1,954.9	-9.3	63.6	63.6	1.65	1.61	2.04	
2,052.0	12.10	111.30	2,047.2	-15.7	80.5	81.6	2.25	2.23	1.17	
2,146.0	12.30	107.10	2,139.1	-22.2	99.2	101.4	0.97	0.21	-4.47	
2,239.0	13.30	108.20	2,229.8	-28.5	118.9	122.0	1.11	1.08	1.18	
2,333.0	14.90	108.30	2,320.9	-35.6	140.6	144.9	1.70	1.70	0.11	
2,427.0	14.90	109.20	2,411.8	-43.4	163.5	169.1	0.25	0.00	0.96	
2,520.0	14.90	105.40	2,501.6	-50.5	186.3	193.0	1.05	0.00	-4.09	
2,614.0	14.80	102.90	2,592.5	-56.4	209.7	217.0	0.69	-0.11	-2.66	
2,708.0	14.70	105.50	2,683.4	-62.3	232.9	240.9	0.71	-0.11	2.77	
2,801.0	15.70	107.80	2,773.1	-69.3	256.2	265.3	1.26	1.08	2.47	
2,895.0	15.50	106.70	2,863.7	-76.8	280.4	290.6	0.38	-0.21	-1.17	
2,989.0	15.50	105.70	2,954.3	-83.8	304.5	315.7	0.28	0.00	-1.06	
3,083.0	15.80	104.50	3,044.8	-90.4	329.0	341.0	0.47	0.32	-1.28	
3,176.0	15.60	104.30	3,134.3	-96.6	353.3	366.2	0.22	-0.22	-0.22	
3,270.0	15.00	106.10	3,225.0	-103.1	377.3	391.0	0.81	-0.64	1.91	
3,364.0	15.40	109.10	3,315.7	-110.6	400.8	415.6	0.94	0.43	3.19	
3,457.0	14.60	104.90	3,405.5	-117.6	423.8	439.7	1.45	-0.86	-4.52	
3,551.0	11.80	111.70	3,497.0	-124.2	444.1	461.1	3.40	-2.98	7.23	
3,645.0	12.90	106.80	3,588.9	-130.8	463.1	481.2	1.62	1.17	-5.21	
3,738.0	13.50	101.10	3,679.4	-135.9	483.7	502.3	1.54	0.65	-6.13	
3,832.0	13.10	99.20	3,770.9	-139.7	505.0	523.8	0.63	-0.43	-2.02	
3,926.0	13.80	105.50	3,862.3	-144.4	526.3	545.6	1.73	0.74	6.70	
4,019.0	14.70	108.30	3,952.5	-151.1	548.2	568.5	1.22	0.97	3.01	
4,113.0	15.70	108.30	4,043.2	-158.8	571.6	593.1	1.06	1.06	0.00	
4,207.0	16.30	109.60	4,133.5	-167.3	596.1	619.0	0.74	0.64	1.38	
4,301.0	15.50	110.00	4,223.9	-176.0	620.3	644.7	0.86	-0.85	0.43	
4,394.0	14.70	111.10	4,313.7	-184.5	643.0	668.9	0.91	-0.86	1.18	
4,488.0	15.30	112.60	4,404.5	-193.5	665.6	693.1	0.76	0.64	1.60	
4,582.0	14.40	111.40	4,495.4	-202.6	687.9	717.1	1.01	-0.96	-1.28	
4,675.0	12.60	111.90	4,585.8	-210.6	708.1	738.8	1.94	-1.94	0.54	
4,769.0	12.00	110.50	4,677.6	-217.8	726.8	758.7	0.71	-0.64	-1.49	
4,863.0	10.40	109.70	4,769.8	-224.1	743.9	776.9	1.71	-1.70	-0.85	
4,957.0	8.00	107.80	4,862.6	-229.0	758.1	792.0	2.57	-2.55	-2.02	
5,051.0	6.50	108.50	4,955.9	-232.7	769.4	803.8	1.60	-1.60	0.74	
5,144.0	5.60	109.60	5,048.4	-235.9	778.7	813.6	0.98	-0.97	1.18	
5,238.0	4.90	115.60	5,142.0	-239.1	786.6	822.2	0.95	-0.74	6.38	
5,296.3	4.34	113.88	5,200.1	-241.1	790.9	826.8	0.99	-0.96	-2.94	
DRILL TARGET BHL 540'FNL, 2154'FWL										
5,298.1	4.32	113.82	5,201.9	-241.1	791.0	827.0	0.99	-0.96	-3.33	
PERMIT TARGET BHL 480'FNL, 2207'FWL										
5,332.0	4.00	112.60	5,235.7	-242.1	793.3	829.4	0.99	-0.95	-3.62	
5,426.0	3.00	118.50	5,329.5	-244.6	798.5	835.1	1.13	-1.06	6.28	
5,520.0	2.30	117.70	5,423.4	-246.6	802.3	839.3	0.75	-0.74	-0.85	
5,614.0	1.90	117.80	5,517.3	-248.2	805.3	842.7	0.43	-0.43	0.11	
5,708.0	1.80	122.20	5,611.3	-249.7	808.0	845.7	0.18	-0.11	4.68	
5,802.0	1.50	63.30	5,705.3	-250.0	810.3	848.0	1.75	-0.32	-62.66	
5,896.0	1.60	48.40	5,799.2	-248.5	812.4	849.6	0.44	0.11	-15.85	
5,990.0	1.30	21.70	5,893.2	-246.7	813.8	850.3	0.78	-0.32	-28.40	
6,083.0	0.60	16.10	5,986.2	-245.2	814.3	850.4	0.76	-0.75	-6.02	
6,177.0	0.10	6.80	6,080.2	-244.7	814.4	850.4	0.53	-0.53	-9.89	
6,271.0	0.20	100.90	6,174.2	-244.6	814.6	850.5	0.24	0.11	100.11	

Company:	Synergy Resources	Local Co-ordinate Reference:	Well SRC TK 21-36D
Project:	SEC.36-T7N-R66W	TVD Reference:	WELL @ 4869.0ft (Original Well Elev)
Site:	SRC TK Pad Sec.36-T7N-R66W	MD Reference:	WELL @ 4869.0ft (Original Well Elev)
Well:	SRC TK 21-36D	North Reference:	True
Wellbore:	SRC TK 21-36D	Survey Calculation Method:	Minimum Curvature
Design:	SRC TK 21-36D	Database:	EDM den0-adp01 Server Data

Survey

Measured Depth (ft)	Inclination (°)	Azimuth (°)	Vertical Depth (ft)	+N/-S (ft)	+E/-W (ft)	Vertical Section (ft)	Dogleg Rate (°/100ft)	Build Rate (°/100ft)	Turn Rate (°/100ft)
6,365.0	0.20	122.10	6,268.2	-244.7	814.9	850.9	0.08	0.00	22.55
6,459.0	0.30	66.40	6,362.2	-244.7	815.3	851.2	0.27	0.11	-59.26
6,552.0	0.30	114.70	6,455.2	-244.7	815.7	851.6	0.26	0.00	51.94
6,646.0	0.20	129.40	6,549.2	-244.9	816.1	852.0	0.13	-0.11	15.64
6,740.0	0.30	151.90	6,643.2	-245.3	816.3	852.4	0.15	0.11	23.94
6,833.0	0.20	124.50	6,736.2	-245.6	816.6	852.7	0.16	-0.11	-29.46
6,927.0	0.20	162.40	6,830.2	-245.8	816.7	852.9	0.14	0.00	40.32
7,021.0	0.10	174.20	6,924.2	-246.0	816.8	853.1	0.11	-0.11	12.55
7,114.0	0.10	168.60	7,017.2	-246.2	816.8	853.1	0.01	0.00	-6.02
7,208.0	0.10	145.70	7,111.2	-246.4	816.9	853.2	0.04	0.00	-24.36
7,302.0	0.10	200.20	7,205.2	-246.5	816.9	853.3	0.10	0.00	57.98
7,395.0	0.10	238.60	7,298.2	-246.6	816.8	853.2	0.07	0.00	41.29
7,447.3	0.15	217.83	7,350.5	-246.7	816.7	853.2	0.13	0.10	-39.72
LEGAL WINDOW 400' X 400' 662'FNL, 2029'FWL									
7,489.0	0.20	209.70	7,392.2	-246.8	816.7	853.1	0.13	0.12	-19.49
7,547.0	0.40	237.90	7,450.2	-247.0	816.4	853.0	0.42	0.34	48.62
7,594.0	0.40	237.90	7,497.2	-247.2	816.2	852.8	0.00	0.00	0.00

Wellbore Targets

Target Name	Dip Angle (°)	Dip Dir. (°)	TVD (ft)	+N/-S (ft)	+E/-W (ft)	Northing (ft)	Easting (ft)	Latitude	Longitude
- hit/miss target									
- Shape									
DRILL TARGET BHL	0.00	0.00	5,200.0	-240.8	792.6	1,439,656.27	3,214,729.17	40° 32' 15.680 N	104° 43' 38.746 W
- actual wellpath misses target center by 1.7ft at 5296.3ft MD (5200.1 TVD, -241.1 N, 790.9 E)									
- Point									
PERMIT TARGET BH	0.00	0.00	5,200.0	-180.8	845.6	1,439,716.76	3,214,781.60	40° 32' 16.273 N	104° 43' 38.060 W
- actual wellpath misses target center by 81.4ft at 5298.1ft MD (5201.9 TVD, -241.1 N, 791.0 E)									
- Point									
LEGAL WINDOW 40C	0.00	0.00	7,350.0	-362.8	667.6	1,439,533.20	3,214,605.23	40° 32' 14.475 N	104° 43' 40.365 W
- actual wellpath misses target center by 189.0ft at 7447.4ft MD (7350.5 TVD, -246.7 N, 816.7 E)									
- Rectangle (sides W400.0 H400.0 D0.0)									

Checked By: _____ Approved By: _____ Date: _____