

---

# **ANTERO RESOURCES**

---

**DIXON FED B4  
MAMM CREEK  
Garfield County , Colorado**

## **Cement Surface Casing** **25-Feb-2011**

### **Post Job Report**

## The Road to Excellence Starts with Safety

Sold To #: 337854	Ship To #: 2835115	Quote #:	Sales Order #: 7947716
Customer: ANTERO RESOURCES		Customer Rep: JOE CANADY	
Well Name: DIXON FED		Well #: B4	API/UWI #: 05-045-14371
Field: MAMM CREEK	City (SAP): SILT	County/Parish: Garfield	State: Colorado
Lat: N 39.524 deg. OR N 39 deg. 31 min. 26.983 secs.		Long: W 107.66 deg. OR W -108 deg. 20 min. 25.166 secs.	
Contractor: FRONTIER		Rig/Platform Name/Num: FRONTIER 12	
Job Purpose: Cement Surface Casing			
Well Type: Development Well		Job Type: Cement Surface Casing	
Sales Person: METLI, MARSHALL	Srv Supervisor: HOEFER, BRYAN		MBU ID Emp #: 415775

## Job Personnel

HES Emp Name	Exp Hrs	Emp #	HES Emp Name	Exp Hrs	Emp #	HES Emp Name	Exp Hrs	Emp #
ANDERSON, ADAM S	4.5	456683	COSTELDIA, BROCK James	4.5	476115	HOEFER, BRYAN D	4.5	415775
KEANE, JOHN Donovan	4.5	486519						

## Equipment

HES Unit #	Distance-1 way	HES Unit #	Distance-1 way	HES Unit #	Distance-1 way	HES Unit #	Distance-1 way
10533645	60 mile	10871245	60 mile	11139328	60 mile	11259885	60 mile
11360881	60 mile						

## Job Hours

Date	On Location Hours	Operating Hours	Date	On Location Hours	Operating Hours	Date	On Location Hours	Operating Hours
2/25/2011	4.5	1						

TOTAL	Total is the sum of each column separately							
-------	--	--	--	--	--	--	--	--

## Job

Formation Name										Date	Time	Time Zone
Formation Depth (MD)		Top			Bottom				Called Out	25 - Feb - 2011	07:30	MST
Form Type					BHST				On Location	25 - Feb - 2011	11:15	MST
Job depth MD		1024.1 ft			Job Depth TVD		1024.1 ft		Job Started	25 - Feb - 2011	12:44	MST
Water Depth					Wk Ht Above Floor		3. ft		Job Completed	25 - Feb - 2011	13:23	MST
Perforation Depth (MD)		From			To				Departed Loc			

## Well Data

Description	New / Used	Max pressure psig	Size in	ID in	Weight lbm/ft	Thread	Grade	Top MD ft	Bottom MD ft	Top TVD ft	Bottom TVD ft
-------------	------------	-------------------	---------	-------	---------------	--------	-------	-----------	--------------	------------	---------------

## Tools and Accessories

Type	Size	Qty	Make	Depth	Type	Size	Qty	Make	Depth	Type	Size	Qty	Make
Guide Shoe					Packer					Top Plug	8.625"	1	
Float Shoe					Bridge Plug					Bottom Plug			
Float Collar					Retainer					SSR plug set			
Insert Float										Plug Container	8.625"	1	
Stage Tool										Centralizers			

## Miscellaneous Materials

Gelling Agt		Conc		Surfactant		Conc		Acid Type		Qty		Conc	%
Treatment Fld		Conc		Inhibitor		Conc		Sand Type		Size		Qty	

## Fluid Data

Stage/Plug #: 1													
Fluid #	Stage Type	Fluid Name			Qty	Qty uom	Mixing Density lbm/gal	Yield ft3/sk	Mix Fluid Gal/sk	Rate bbl/min	Total Mix Fluid Gal/sk		

Stage/Plug #: 1													
Fluid #	Stage Type	Fluid Name			Qty	Qty uom	Mixing Density lbm/gal	Yield ft3/sk	Mix Fluid Gal/sk	Rate bbl/min	Total Mix Fluid Gal/sk		

Stage/Plug #: 1									
1	Fresh Water Spacer		20	bbl	.	.0	.0	6	
2	VersaCem Lead Cement	VERSACEM (TM) SYSTEM (452010)	110	sacks	12.3	2.38	13.75	6	13.75
13.75 Gal		FRESH WATER							
3	SwiftCem Tail Cement	SWIFTCES (TM) SYSTEM (452990)	180	sacks	14.2	1.43	6.88	6	6.72
6.715 Gal		FRESH WATER							
4	Fresh Water Displacement		59.8	bbl	.	.0	.0	10	
Calculated Values		Pressures		Volumes					
Displacement	59.8	Shut In: Instant		Lost Returns	0	Cement Slurry	92.4	Pad	
Top Of Cement	SURFACE	5 Min		Cement Returns	14	Actual Displacement	59.8	Treatment	
Frac Gradient		15 Min		Spacers	20	Load and Breakdown		Total Job	
Rates									
Circulating	6	Mixing	6	Displacement	10	Avg. Job	8		
Cement Left In Pipe	Amount	42.31 ft	Reason	Shoe Joint					
Frac Ring # 1 @	ID	Frac ring # 2 @	ID	Frac Ring # 3 @	ID	Frac Ring # 4 @	ID		
The Information Stated Herein Is Correct				Customer Representative Signature					

*The Road to Excellence Starts with Safety*

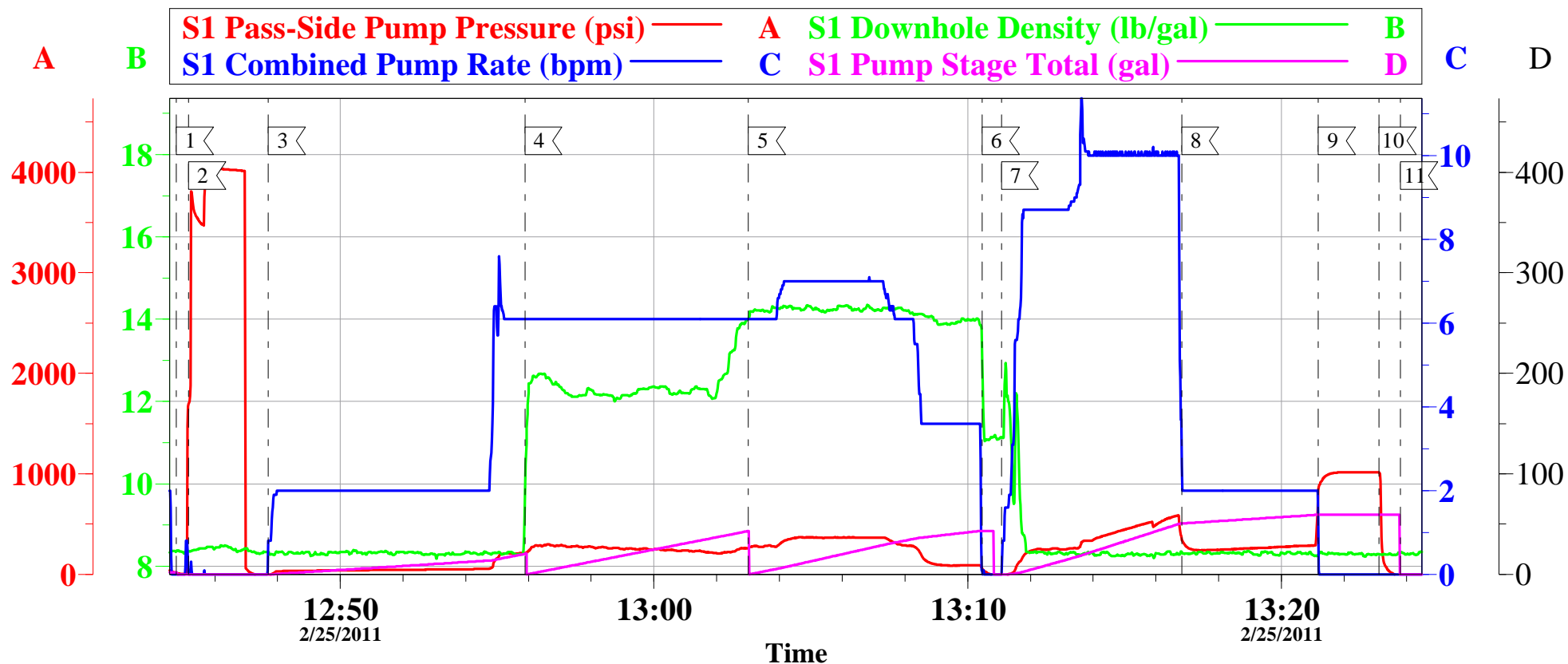
<b>Sold To #:</b> 337854	<b>Ship To #:</b> 2835115	<b>Quote #:</b>	<b>Sales Order #:</b> 7947716
<b>Customer:</b> ANTERO RESOURCES		<b>Customer Rep:</b> JOE CANADY	
<b>Well Name:</b> DIXON FED		<b>Well #:</b> B4	<b>API/UWI #:</b> 05-045-14371
<b>Field:</b> MAMM CREEK	<b>City (SAP):</b> SILT	<b>County/Parish:</b> Garfield	<b>State:</b> Colorado
<b>Legal Description:</b>			
<b>Lat:</b> N 39.524 deg. OR N 39 deg. 31 min. 26.983 secs.		<b>Long:</b> W 107.66 deg. OR W -108 deg. 20 min. 25.166 secs.	
<b>Contractor:</b> FRONTIER		<b>Rig/Platform Name/Num:</b> FRONTIER 12	
<b>Job Purpose:</b> Cement Surface Casing			<b>Ticket Amount:</b>
<b>Well Type:</b> Development Well		<b>Job Type:</b> Cement Surface Casing	
<b>Sales Person:</b> METLI, MARSHALL		<b>Srvc Supervisor:</b> HOEFER, BRYAN	<b>MBU ID Emp #:</b> 415775

Activity Description	Date/Time	Cht #	Rate bbl/min	Volume bbl		Pressure psig		Comments
				Stage	Total	Tubing	Casing	
Call Out	02/25/2011 07:30							
Pre-Convoy Safety Meeting	02/25/2011 09:25							WITH ALL HES EE'S
Depart from Service Center or Other Site	02/25/2011 09:30							
Arrive At Loc	02/25/2011 11:15							ARRIVED 15 MIN LATE, RIGGING DOWN CASING CREW UPON ARRIVAL
Assessment Of Location Safety Meeting	02/25/2011 11:20							WITH ALL HES EE'S
Pre-Rig Up Safety Meeting	02/25/2011 11:25							WITH ALL HES EE'S
Rig-Up Equipment	02/25/2011 11:30							IRON TO FLOOR, WATER LINES, 1 660 BULK TRUCK, F-550
Pre-Job Safety Meeting	02/25/2011 12:30							WITH ALL HES EE'S AND RIG CREW
Start Job	02/25/2011 12:44							TD-1034', TP-1024.1, SJ-42.31, MUD- 9.5#, OH-12 1/4", 8 5/8" 32# J55 CASING
Prime Pumps	02/25/2011 12:44		2	2			58.0	FRESH WATER
Test Lines	02/25/2011 12:45		0.5	0.5			4400.0	TESTED TO 4400psi, TEST HELD GREAT
Pump Spacer	02/25/2011 12:47		6	20			225.0	FRESH WATER
Pump Lead Cement	02/25/2011 12:55		6	46.6			280.0	110skts OF VERSACEM PUMPED @ 12.3#, 2.38 ft3/sk, 13.75 gal/sk
Pump Tail Cement	02/25/2011 13:03		6	45.8			380.0	180skts OF SWIFTCES PUMPED @ 14.2#, 1.43 ft3/sk, 6.88 gal/sk

Activity Description	Date/Time	Cht #	Rate bbl/min	Volume bbl		Pressure psig		Comments
				Stage	Total	Tubing	Casing	
Shutdown	02/25/2011 13:10							
Drop Top Plug	02/25/2011 13:10							COMPANY REP. VERIFIED PLUG LEFT HEAD
Pump Displacement	02/25/2011 13:11		10	59.8			600.0	FRESH WATER
Slow Rate	02/25/2011 13:16		2	50			300.0	LAST 10 BBLS
Bump Plug	02/25/2011 13:21		2	59.8			1020.0	TOOK 700psi OVER
Check Floats	02/25/2011 13:23							FLOATS HELD, GOT .5 BBLS BACK ON RELEASE
End Job	02/25/2011 13:23							GOOD RETURNS THROUGHOUT JOB, 14 BBLS BACK TO THE PIT
Post-Job Safety Meeting (Pre Rig-Down)	02/25/2011 13:25							WITH ALL HES EE'S
Rig-Down Equipment	02/25/2011 14:45							
Pre-Convoy Safety Meeting	02/25/2011 15:30							WITH ALL HES EE'S
Depart Location for Service Center or Other Site	02/25/2011 15:35							THANK YOU FOR USING GRAND JUNCTION HALLIBURTON CEMENT, BRYAN HOEFER AND CREW

# ANTERO

## DIXON FED B4, SURFACE



Local Event Log			
	Maximum	SPPP	
1 START JOB	12:44:46	1698	2 TEST LINES
3 PUMP SPACER	12:47:42	213.3	4 PUMP LEAD CEMENT
5 PUMP TAIL CEMENT	13:03:01	372.3	6 SHUTDOWN/ DROP TOP PLUG
7 PUMP DISPLACEMENT	13:11:05	588.3	8 SLOW RATE
9 BUMP PLUG	13:21:11	1017	10 CHECK FLOATS
11 END JOB	13:23:48	-10.70	

Customer: ANTERO	Job Date: 25-Feb-2011	Sales Order #: 7947716
Well Description: DIXON FED B4	Job type: SURFACE	ADC Used: YES
Customer Rep: JOE CANADY	Service Supervisor: BRYAN HOEFER	Operator/ Pump: ANDERSON/ #8