

SYNERGY RESOURCES CORPORATION
20203 HIGHWAY 60
PLATTEVILLE, Colorado

SRC TK 36 AD

ENSIGN #33

Post Job Summary

Cement Production Casing

Prepared for: Don Libhart
Date Prepared: 3/15/2010
Version: 1

Service Supervisor: Michael Blake

Submitted by: Wes Aaron

HALLIBURTON

HALLIBURTON

Service Supervisor Reports

Job Log

Date/Time	Chart #	Activity Code	Pump Rate	Cum Vol	Pump		Pressure (psig)	Comments
03/10/2010 23:00		Arrive at Location from Service Center						
03/10/2010 23:15		Safety Huddle						
03/11/2010 00:05		Safety Meeting						
03/11/2010 00:33		Start Job						
03/11/2010 00:34		Test Lines	0.5	1			3895.0	TEST PUMPS AND LINES
03/11/2010 00:36		Pump Water	4	20			255.0	PUMP WATER SPACER
03/11/2010 00:42		Pump Spacer 1	4	24			285.0	PUMP MUD FLUSH
03/11/2010 00:48		Pump Lead Cement	7	191			325.0	PUMP (430 sks) OF VARICEM CEMENT AT 12.0#
03/11/2010 01:16		Pump Tail Cement	7	61			230.0	PUMP (175 sks) OF VARICEM CEMENT AT 13.0#
03/11/2010 01:26		Drop Top Plug						SHUT DOWN AND DROP PLUG AND CLEAN LINES
03/11/2010 01:30		Pump Displacement	7	117			1385.0	PUMP DISPLACEMENT WITH WATER AND CLAY FIX
03/11/2010 01:48		Bump Plug					3175.0	BUMP PLUG AND RELEASED BACK AND CHECK FLOATS HELD
03/11/2010 01:52		End Job						

The Road to Excellence Starts with Safety

Sold To #: 359915		Ship To #: 2773313		Quote #:		Sales Order #: 7233746	
Customer: SYNERGY RESOURCES CORPORATION				Customer Rep:			
Well Name: SRC TK			Well #: 36 AD			API/UWI #: 03-123-30459-00	
Field: WATTENBERG		City (SAP): EATON		County/Parish: Weld		State: Colorado	
Contractor: ENSIGN			Rig/Platform Name/Num: # 33				
Job Purpose: Cement Production Casing							
Well Type: Development Well			Job Type: Cement Production Casing				
Sales Person: FLING, MATTHEW			Srvc Supervisor: BLAKE, MICHAEL			MBU ID Emp #: 305760	

Job Personnel

HES Emp Name	Exp Hrs	Emp #	HES Emp Name	Exp Hrs	Emp #	HES Emp Name	Exp Hrs	Emp #
BANUELOS, GUADALUPE		372277	BLAKE, MICHAEL James		305760	HALE, ROBERT E		470588
MCPHERSON, MATTHEW L		455378	WILEY, JAMES A		440080			

Equipment

HES Unit #	Distance-1 way	HES Unit #	Distance-1 way	HES Unit #	Distance-1 way	HES Unit #	Distance-1 way
10824253C	40 mile	10857012C	40 mile	10866497C	40 mile	11338223	40 mile
11398319	40 mile						

Job Hours

Date	On Location Hours	Operating Hours	Date	On Location Hours	Operating Hours	Date	On Location Hours	Operating Hours
TOTAL	Total is the sum of each column separately							

Job

Formation Name						Date	Time	Time Zone
Formation Depth (MD)	Top		Bottom		Called Out	10 - Mar - 2010	19:30	MST
Form Type			BHST		On Location	10 - Mar - 2010	23:00	MST
Job depth MD	7594. ft		Job Depth TVD	7594. ft	Job Started	11 - Mar - 2010	00:33	MST
Water Depth			Wk Ht Above Floor	3. ft	Job Completed	11 - Mar - 2010	01:52	MST
Perforation Depth (MD)	From		To		Departed Loc	11 - Mar - 2010	03:00	MST

Well Data

Description	New / Used	Max pressure psig	Size in	ID in	Weight lbm/ft	Thread	Grade	Top MD ft	Bottom MD ft	Top TVD ft	Bottom TVD ft
Open Hole				7.875				551.	7594.	.	.
Production Casing	New		4.5	4.	11.6			.	7569.		
Surface Casing	Used		8.625	8.097	24.		J-55	.	551.	.	.

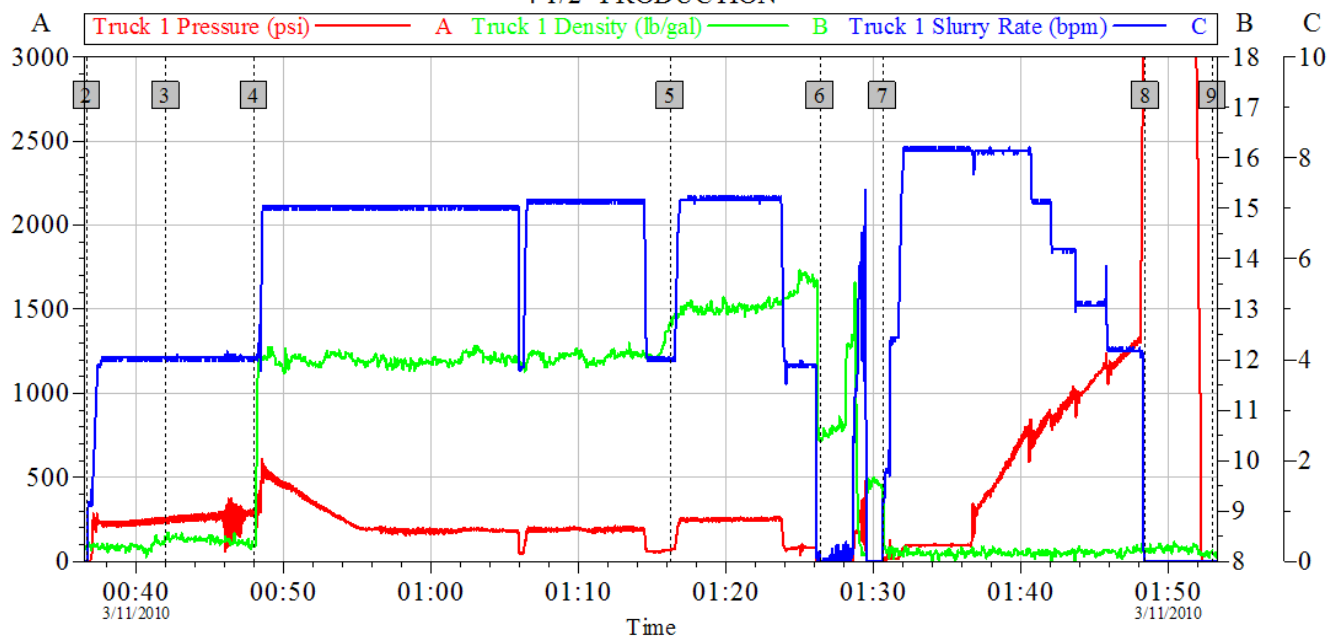
Sales/Rental/3rd Party (HES)

Description	Qty	Qty uom	Depth	Supplier
SHOE,FLT,4-1/2 8RD,2-3/4 SSII	1	EA		
CLR,FLT,4-1/2 8RD,9.5-13.5PPF,2-3/4	1	EA		
CENTRALIZER ASSY - API - 4-1/2 CSG X	30	EA		
CLAMP - LIMIT - 4-1/2 - HINGED -	1	EA		
PLUG,CMTG,TOP,4 1/2,HWE,3.65 MIN/4.14 MA	1	EA		

Description										Qty	Qty uom	Depth	Supplier		
KIT,HALL WELD-A										1	EA				
Tools and Accessories															
Type	Size	Qty	Make	Depth	Type	Size	Qty	Make	Depth	Type	Size	Qty	Make		
Guide Shoe					Packer					Top Plug					
Float Shoe					Bridge Plug					Bottom Plug					
Float Collar					Retainer					SSR plug set					
Insert Float										Plug Container					
Stage Tool										Centralizers					
Miscellaneous Materials															
Gelling Agt			Conc		Surfactant			Conc		Acid Type			Qty	Conc	%
Treatment Fld			Conc		Inhibitor			Conc		Sand Type			Size	Qty	
Fluid Data															
Stage/Plug #: 1															
Fluid #	Stage Type		Fluid Name				Qty	Qty uom	Mixing Density lbm/gal	Yield ft3/sk	Mix Fluid Gal/sk	Rate bbl/min	Total Mix Fluid Gal/sk		
1	Water Spacer						20.00	bbl	8.33	.0	.0	5.0			
2	MUD FLUSH III		MUD FLUSH III - SBM (528788)				24.00	bbl	8.4	.0	.0	5.0			
3	Versacem 12#		VERSACEM (TM) SYSTEM (452010)					sacks	12.	2.49	13.91	5.0	13.91		
4	Versacem 13#		VERSACEM (TM) SYSTEM (452010)					sacks	13.	1.96	9.93	5.0	9.93		
Calculated Values			Pressures			Volumes									
Displacement			Shut In: Instant			Lost Returns			Cement Slurry			Pad			
Top Of Cement			5 Min			Cement Returns			Actual Displacement			Treatment			
Frac Gradient			15 Min			Spacers			Load and Breakdown			Total Job			
Rates															
Circulating			Mixing			Displacement			Avg. Job						
Cement Left In Pipe		Amount	14 ft	Reason	Shoe Joint										
Frac Ring # 1 @	ID		Frac ring # 2 @	ID		Frac Ring # 3 @	ID		Frac Ring # 4 @	ID					
The Information Stated Herein Is Correct					Customer Representative Signature										

HALLIBURTON

SYNERGY - SRC TK 36 AD 4 1/2" PRODUCTION



Global Event Log			
Intersection	TIP	Intersection	TIP
2 Pump Water	00:36:39 -9.879	3 Pump Mud Flush	00:42:00 232.3
4 Pump Varicem Cement @ 12.0 #	00:48:00 282.0	5 Pump Varicem Cement @ 13.0 #	01:16:13 70.14
6 Drop Plug	01:26:23 -21.87	7 Pump Displacement	01:30:37 -22.19
8 Bump Plug	01:48:26 3189	9 End Job	01:52:59 -28.65

Customer:	Job Date: 11-Mar-2010	Sales Order #: 7233746
Well Description:	UWI:	

OptiCem v6.4.2
11-Mar-10 02:03