

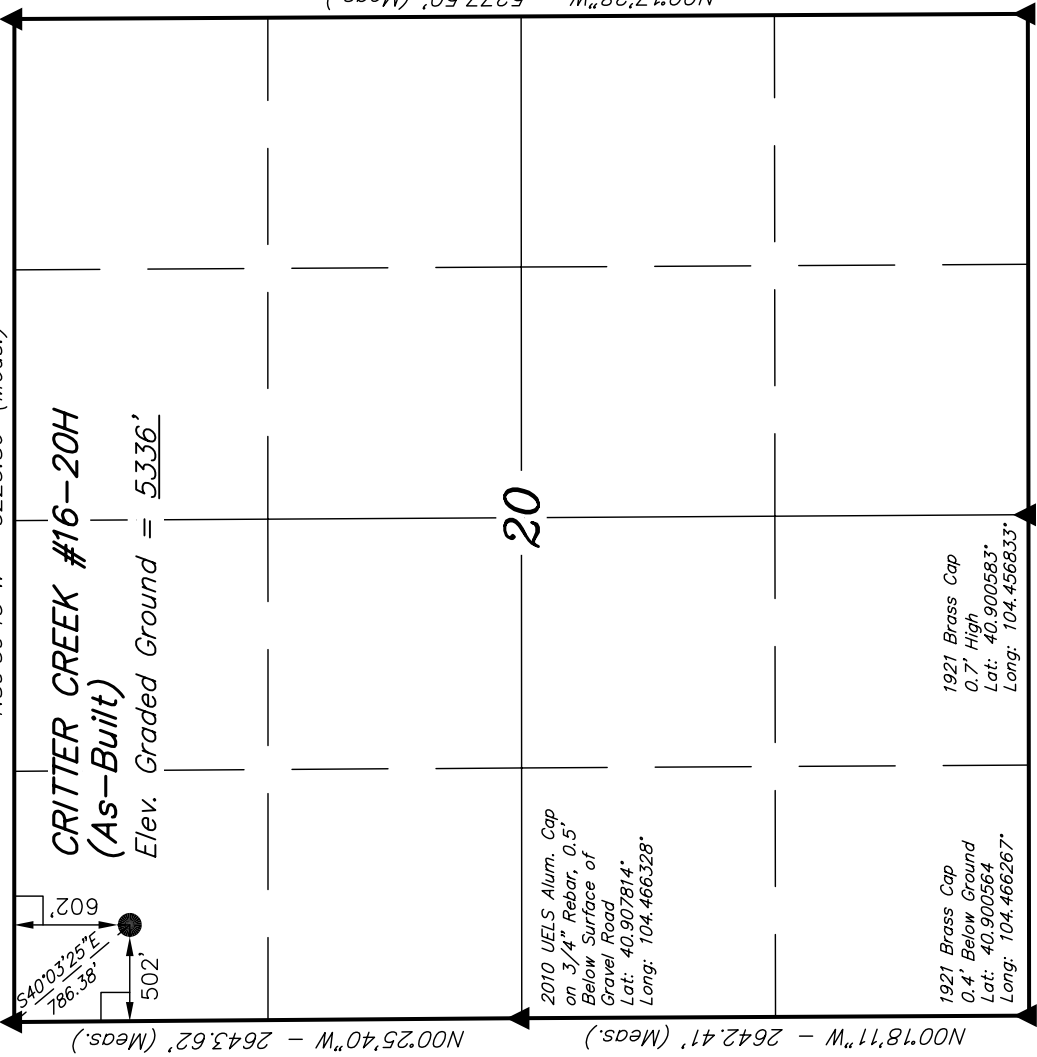
**EOG RESOURCES, INC.**

**T11N, R63W, 6th P.M.**

UELS Alum. Cap  
0.5' Below Road  
Lat: 40.915078°  
Long: 104.466408°

UELS Alum. Cap  
0.5' Below Road  
Lat: 40.915078°  
Long: 104.447514°

N89°59'13"W - 5223.86' (Meas.)



**CRITTER CREEK #16-20H  
(As-Built)**  
Elev. Graded Ground = 5336'

2010 UELS Alum. Cap  
on 3/4" Rebar, 0.5'  
Below Surface of  
Gravel Road  
Lat: 40.907814°  
Long: 104.466328°

1921 Brass Cap  
0.4' Below Ground  
Lat: 40.900564°  
Long: 104.466267°

1921 Brass Cap  
0.7' High  
Lat: 40.900583°  
Long: 104.456833°

S89°54'44"W - 2608.55' (Meas.)

S89°55'38"W - 2608.42' (Meas.)

PDOP = 3.1

NAD 83 (SURFACE LOCATION)
LATITUDE = 40°54'48.35" (40.913431)
LONGITUDE = 104°27'52.50" (104.464583)
NAD 27 (SURFACE LOCATION)
LATITUDE = 40°54'48.41" (40.913447)
LONGITUDE = 104°27'50.65" (104.464069)
STATE PLANE NAD 83 (COLORADO NORTH)
N: 1577285.40 E: 3286183.61
STATE PLANE NAD 27 (COLORADO NORTH)
N: 577283.48 E: 2286333.08

**LEGEND:**

- = 90° SYMBOL
- = PROPOSED WELL HEAD.
- ▲ = SECTION CORNERS LOCATED.

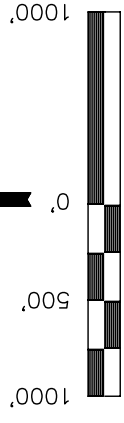
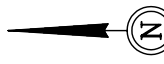
Well location, CRITTER CREEK #16-20H, (As-Built) located as shown in the NW 1/4 NW 1/4 of Section 20, T11N, R63W, 6th P.M., Weld County, Colorado.

**BASIS OF ELEVATION**

SPOT ELEVATION AT THE NORTHEAST CORNER OF SECTION 1, T11N, R63W, 6th P.M. TAKEN FROM THE HEREFORD, QUADRANGLE, COLORADO, WELD COUNTY, 7.5 MINUTE QUAD (TOPOGRAPHIC MAP) PUBLISHED BY THE UNITED STATES DEPARTMENT OF THE INTERIOR, GEOLOGICAL SURVEY. SAID ELEVATION IS MARKED AS BEING 5352 FEET.

**BASIS OF BEARINGS**

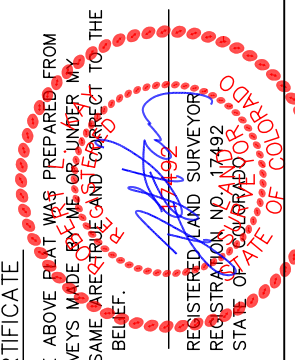
BASIS OF BEARINGS IS A G.P.S. OBSERVATION.



**CERTIFICATE**

THIS IS TO CERTIFY THAT THE ABOVE PLAT WAS PREPARED FROM FIELD NOTES OF ACTUAL SURVEYS MADE BY ME OR UNDER MY SUPERVISION AND THAT THE SAME ARE TRUE AND CORRECT TO THE BEST OF MY KNOWLEDGE AND BELIEF.

UELS Alum. Cap  
Lat: 40.900597°  
Long: 104.447400°



**UNTAH ENGINEERING & LAND SURVEYING**

85 SOUTH 200 EAST - VERNAL, UTAH 84078  
(435) 789-1017

SCALE	DATE SURVEYED:	DATE DRAWN:
1" = 1000'	01-12-11	02-09-11
PARTY	REFERENCES	
B.H. K.P. J.I.	G.L.O. PLAT	
WEATHER	FILE	
COLD		

EOG RESOURCES, INC.