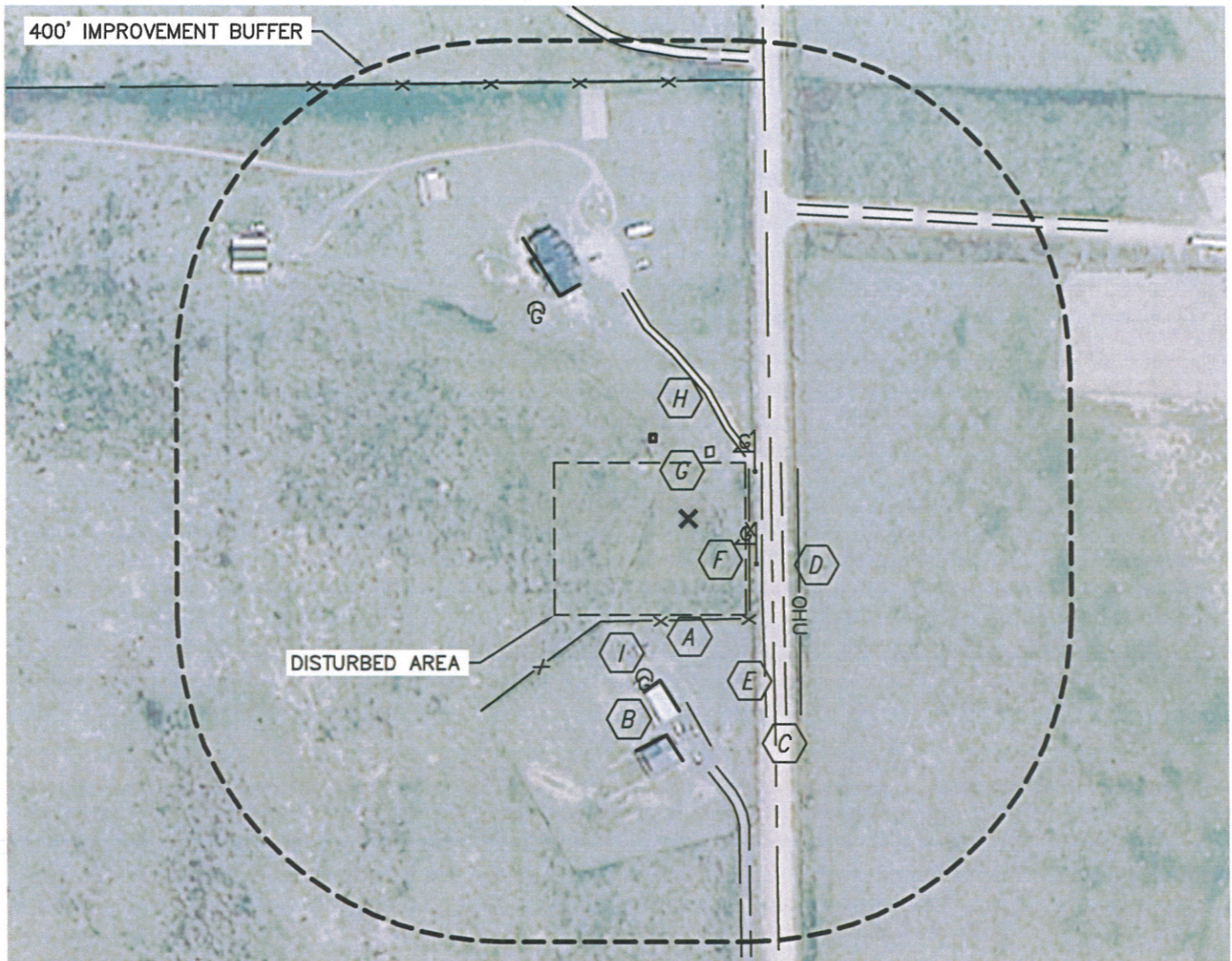


Lat40°, Inc. 1635 Foxtrail Drive, Suite 325 Loveland, CO 970-776-3321

PRODUCTION FACILITY LOCATION DRAWING

WRIGHT PC AC32-07

SECTION: 32
TOWNSHIP: 7N
RANGE: 63W



REFERENCE POINT LOCATION:

LATITUDE: 40.53238°N
LONGITUDE: 104.45159°W

ELEV: 4783'
PDOP: 2.4

DATE: 5/4/11
OPERATOR: ADAM KELLY
1/41/4: SE1/4NE1/4
FNL: 1852'

FEL: 103'
DISTANCE TO WELL: 1881'

ASSOCIATED NEW WELLS:

WRIGHT PC AC32-07
ASSOCIATED EXISTING WELLS:
NONE

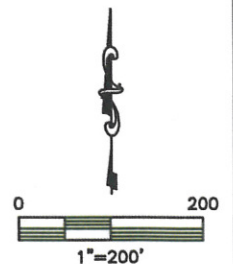
IMPROVEMENTS:

- A** FENCE 123' S, 75' E, 225' S, 534' N
- B** BUILDING 201' S, 266' S, 314' NW, WATER WELL SHED 102' N
- C** COUNTY ROAD 65 91' E
- D** OVERHEAD UTILITY 137' E
- E** BARROW DITCH 88' & 121' E
- F** GAS LINE MARKER 100' SE, 101' NE
- G** CONCRETE PAD 78' NE
- H** DRIVEWAY 104' NE, 396' NE, 562' N, 305' S
- I** PROPANE TANK 201' SW, 315' NW

LEGEND

X - REFERENCE POINT
ALL DISTANCES ARE APPROXIMATE.

NEAREST: BUILDING 201' S,
PUBLIC ROAD 91' E (CR 65), ABOVE GROUND UTILITY 137' E,
RAILROAD 5280'+, PROPERTY LINE 103' E



PROJECT#: 2011112