

Encana OIL & GAS (USA) INC.
WELL PAD C08 799
LOCATED IN GARFIELD COUNTY, COLORADO
SECTION 8, T7S, R99W, 6th P.M.

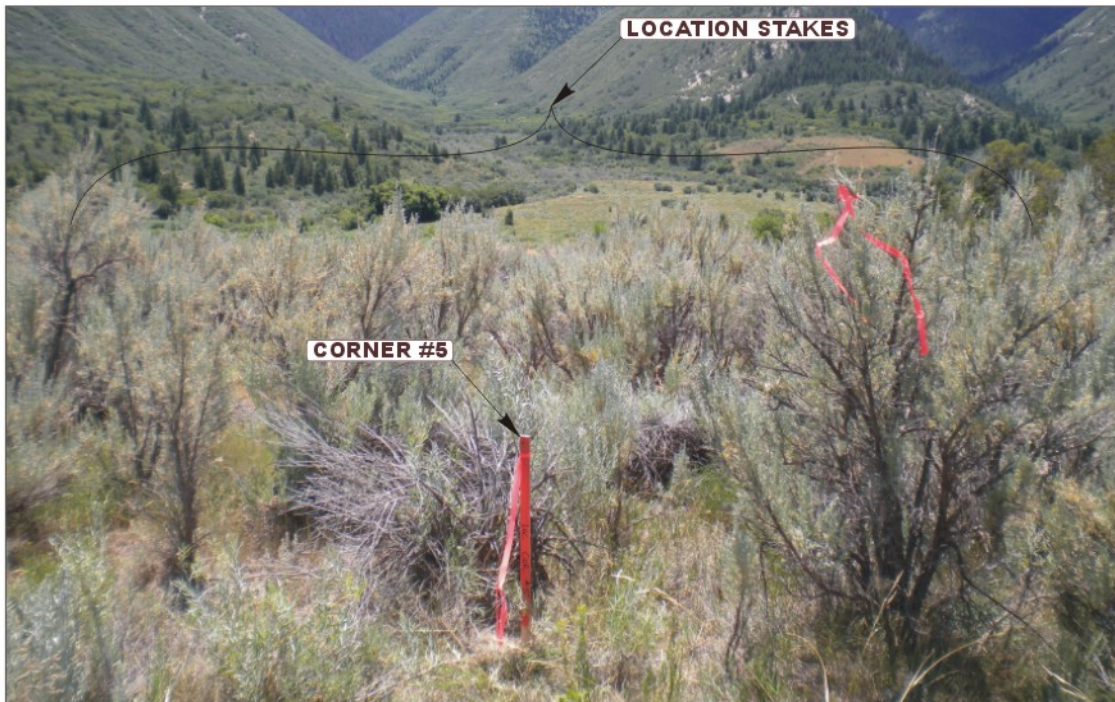


PHOTO: VIEW FROM CORNER #5 TO LOCATION STAKES

CAMERA ANGLE: SOUTHERLY



PHOTO: VIEW FROM BEGINNING OF PROPOSED ACCESS

CAMERA ANGLE: NORTHERLY



UELS

Uintah Engineering & Land Surveying
85 South 200 East Vernal, Utah 84078
(435) 789-1017 * FAX (435) 789-1813

LOCATION PHOTOS

08 **13** **10**
MONTH DAY YEAR

PHOTO
P1

TAKEN BY: C.R.

DRAWN BY: Z.L.

REVISED: 00-00-00

Encana OIL & GAS (USA) INC.
WELL PAD C08 799
LOCATED IN GARFIELD COUNTY, COLORADO
SECTION 8, T7S, R99W, 6th P.M.



PHOTO: VIEW OF LOCATION STAKES

CAMERA ANGLE: NORTHERLY



PHOTO: VIEW OF LOCATION STAKES

CAMERA ANGLE: SOUTHERLY



- Since 1964 -

UELS

Uintah Engineering & Land Surveying
85 South 200 East Vernal, Utah 84078
(435) 789-1017 * FAX (435) 789-1813

LOCATION PHOTOS

08 **13** **10**
MONTH DAY YEAR

TAKEN BY: C.R.

DRAWN BY: Z.L.

REVISED: 00-00-00

PHOTO
P2

Encana OIL & GAS (USA) INC.
WELL PAD C08 799
LOCATED IN GARFIELD COUNTY, COLORADO
SECTION 8, T7S, R99W, 6th P.M.



PHOTO: VIEW OF LOCATION STAKES

CAMERA ANGLE: EASTERLY



PHOTO: VIEW OF LOCATION STAKES

CAMERA ANGLE: WESTERLY



UELS Uintah Engineering & Land Surveying
85 South 200 East Vernal, Utah 84078
(435) 789-1017 * FAX (435) 789-1813

LOCATION PHOTOS

08 **13** **10**
MONTH DAY YEAR

TAKEN BY: C.R.

DRAWN BY: Z.L.

REVISED: 00-00-00

PHOTO
P3