

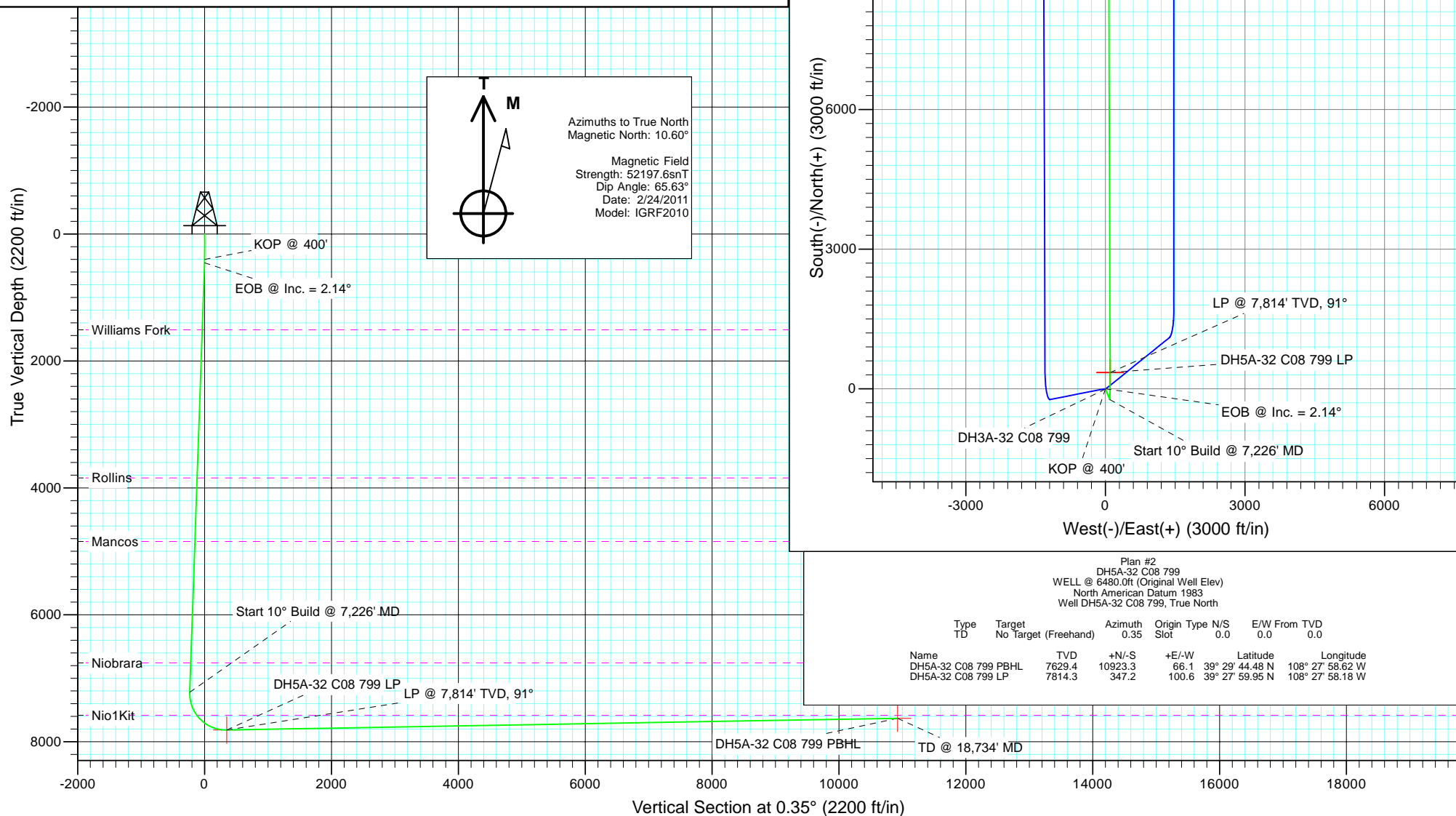


Project: Kimball Mtn
 Site: Section 8 (C08 799)
 Well: DH5A-32 C08 799
 Wellbore: HZ
 Design: Plan #2



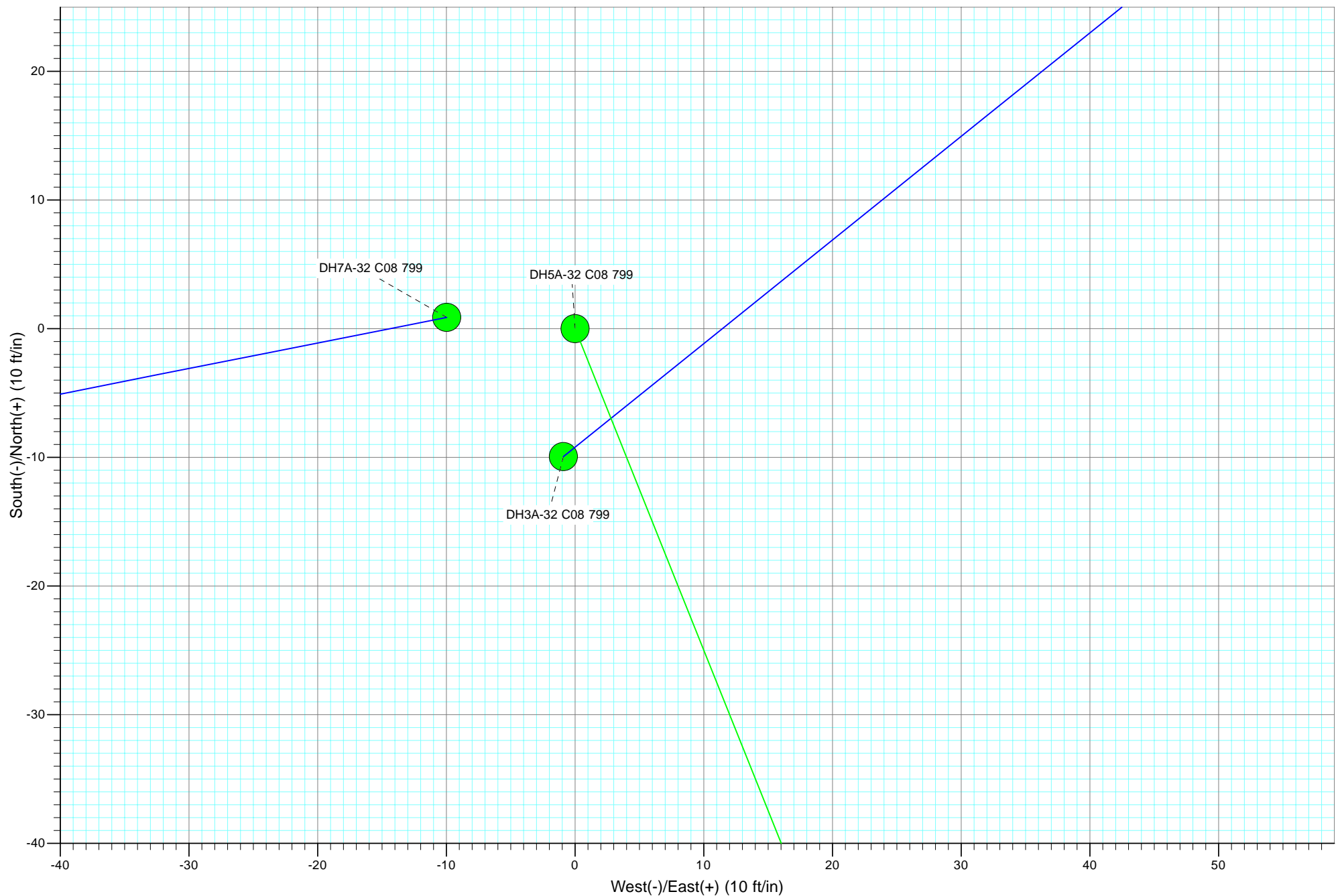
SECTION DETAILS

Sec	MD	Inc	Azi	TVD	+N/-S	+E/-W	Dleg	TFace	VSect	Target
1	0.0	0.00	0.00	0.0	0.0	0.0	0.00	0.00	0.0	
2	400.0	0.00	0.00	400.0	0.0	0.0	0.00	0.00	0.0	
3	453.4	2.14	158.19	453.4	-0.9	0.4	4.00	158.19	-0.9	
4	7226.3	2.14	158.19	7221.6	-235.5	94.2	0.00	0.00	-234.9	
5	8156.2	91.00	359.81	7814.3	347.2	100.6	10.00	-158.35	347.8	DH5A-32 C08 799 LP
6	18734.0	91.00	359.81	7629.4	10923.3	66.1	0.00	0.00	10923.5	DH5A-32 C08 799 PBHL



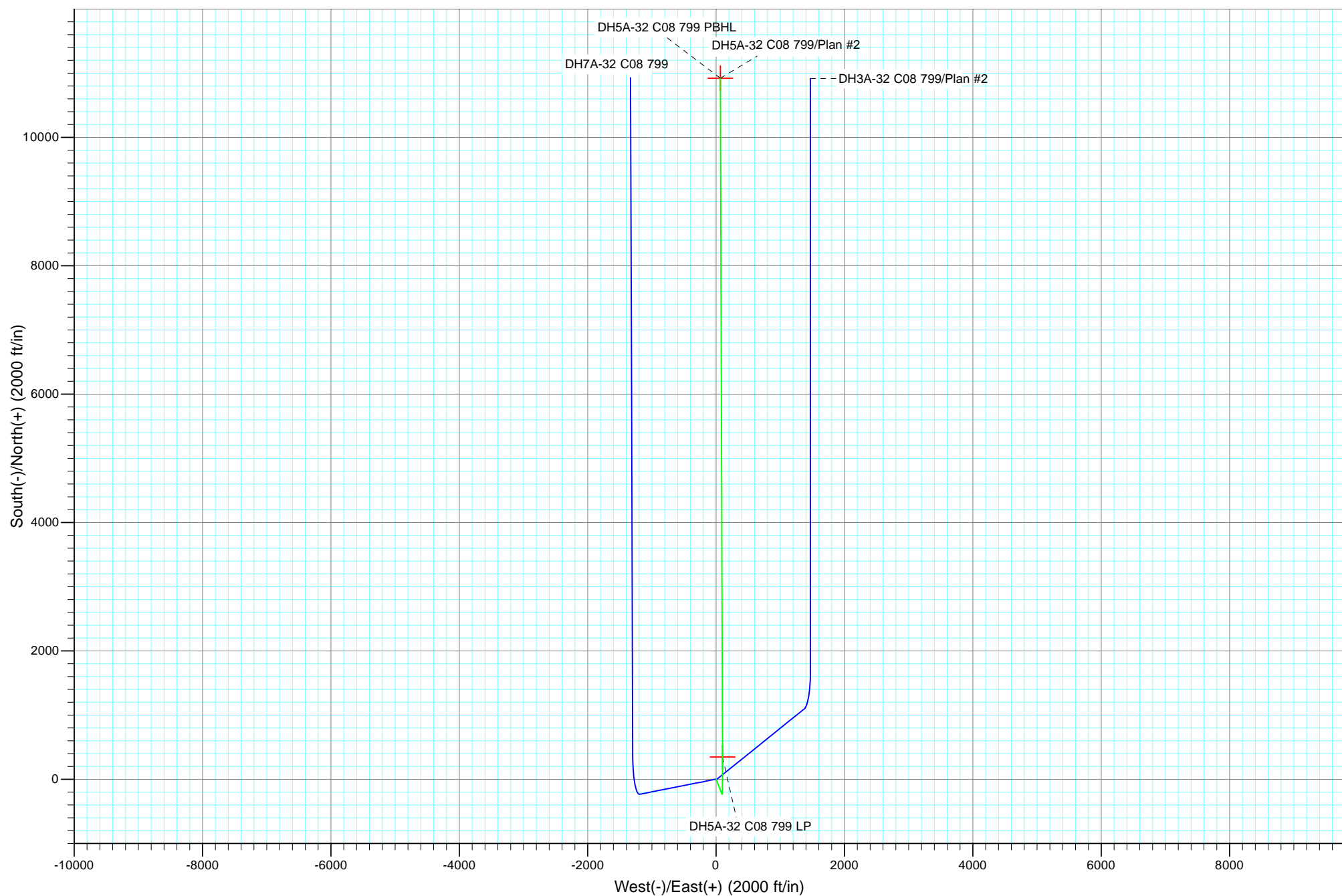


Project: Kimball Mtn
Site: Section 8 (C08 799)
Well: DH5A-32 C08 799
Wellbore: HZ
Design: Plan #2





Project: Kimball Mtn
Site: Section 8 (C08 799)
Well: DH5A-32 C08 799
Wellbore: HZ
Design: Plan #2



Cathedral Energy Services

Planning Report

Database:	EDM 5000.1 US Multi Users DB	Local Co-ordinate Reference:	Well DH5A-32 C08 799
Company:	EnCana Oil & Gas (USA) Inc	TVD Reference:	WELL @ 6480.0ft (Original Well Elev)
Project:	Kimball Mtn	MD Reference:	WELL @ 6480.0ft (Original Well Elev)
Site:	Section 8 (C08 799)	North Reference:	True
Well:	DH5A-32 C08 799	Survey Calculation Method:	Minimum Curvature
Wellbore:	HZ		
Design:	Plan #2		

Project	Kimball Mtn		
Map System:	US State Plane 1983	System Datum:	Mean Sea Level
Geo Datum:	North American Datum 1983		
Map Zone:	Colorado Central Zone		

Site	Section 8 (C08 799)			
Site Position:		Northing:	1,608,176.57 ft	Latitude: 39° 27' 56.42 N
From:	Lat/Long	Easting:	2,162,638.87 ft	Longitude: 108° 27' 59.47 W
Position Uncertainty:	0.0 ft	Slot Radius:	13.200 in	Grid Convergence: -1.87 °

Well	DH5A-32 C08 799			
Well Position	+N/-S	0.0 ft	Northing:	1,608,186.46 ft
	+E/-W	0.0 ft	Easting:	2,162,640.11 ft
Position Uncertainty		0.0 ft	Wellhead Elevation:	ft
			Ground Level:	6,460.0 ft

Wellbore	HZ				
Magnetics	Model Name	Sample Date	Declination (°)	Dip Angle (°)	Field Strength (nT)
	IGRF2010	2/24/2011	10.60	65.63	52,198

Design	Plan #2			
Audit Notes:				
Version:	Phase:	PLAN	Tie On Depth:	0.0
Vertical Section:	Depth From (TVD) (ft)	+N/-S (ft)	+E/-W (ft)	Direction (°)
	0.0	0.0	0.0	0.35

Plan Sections										
Measured Depth (ft)	Inclination (°)	Azimuth (°)	Vertical Depth (ft)	+N/-S (ft)	+E/-W (ft)	Dogleg Rate (°/100ft)	Build Rate (°/100ft)	Turn Rate (°/100ft)	TFO (°)	Target
0.0	0.00	0.00	0.0	0.0	0.0	0.00	0.00	0.00	0.00	
400.0	0.00	0.00	400.0	0.0	0.0	0.00	0.00	0.00	0.00	
453.4	2.14	158.19	453.4	-0.9	0.4	4.00	4.00	0.00	158.19	
7,226.3	2.14	158.19	7,221.6	-235.5	94.2	0.00	0.00	0.00	0.00	
8,156.2	91.00	359.81	7,814.3	347.2	100.6	10.00	9.56	-17.03	-158.35	DH5A-32 C08 799 LP
18,734.0	91.00	359.81	7,629.4	10,923.3	66.1	0.00	0.00	0.00	0.00	DH5A-32 C08 799 PE

Cathedral Energy Services

Planning Report

Database:	EDM 5000.1 US Multi Users DB	Local Co-ordinate Reference:	Well DH5A-32 C08 799
Company:	EnCana Oil & Gas (USA) Inc	TVD Reference:	WELL @ 6480.0ft (Original Well Elev)
Project:	Kimball Mtn	MD Reference:	WELL @ 6480.0ft (Original Well Elev)
Site:	Section 8 (C08 799)	North Reference:	True
Well:	DH5A-32 C08 799	Survey Calculation Method:	Minimum Curvature
Wellbore:	HZ		
Design:	Plan #2		

Planned Survey

Measured Depth (ft)	Inclination (°)	Azimuth (°)	Vertical Depth (ft)	+N/-S (ft)	+E/-W (ft)	Vertical Section (ft)	Dogleg Rate (°/100ft)	Build Rate (°/100ft)	Comments / Formations
0.0	0.00	0.00	0.0	0.0	0.0	0.0	0.00	0.00	
100.0	0.00	0.00	100.0	0.0	0.0	0.0	0.00	0.00	
200.0	0.00	0.00	200.0	0.0	0.0	0.0	0.00	0.00	
300.0	0.00	0.00	300.0	0.0	0.0	0.0	0.00	0.00	
400.0	0.00	0.00	400.0	0.0	0.0	0.0	0.00	0.00	KOP @ 400'
453.4	2.14	158.19	453.4	-0.9	0.4	-0.9	4.00	4.00	EOB @ Inc. = 2.14°
500.0	2.14	158.19	500.0	-2.5	1.0	-2.5	0.00	0.00	
600.0	2.14	158.19	599.9	-6.0	2.4	-6.0	0.00	0.00	
700.0	2.14	158.19	699.8	-9.5	3.8	-9.4	0.00	0.00	
800.0	2.14	158.19	799.7	-12.9	5.2	-12.9	0.00	0.00	
900.0	2.14	158.19	899.7	-16.4	6.6	-16.3	0.00	0.00	
1,000.0	2.14	158.19	999.6	-19.9	7.9	-19.8	0.00	0.00	
1,100.0	2.14	158.19	1,099.5	-23.3	9.3	-23.3	0.00	0.00	
1,200.0	2.14	158.19	1,199.5	-26.8	10.7	-26.7	0.00	0.00	
1,300.0	2.14	158.19	1,299.4	-30.2	12.1	-30.2	0.00	0.00	
1,400.0	2.14	158.19	1,399.3	-33.7	13.5	-33.6	0.00	0.00	
1,500.0	2.14	158.19	1,499.3	-37.2	14.9	-37.1	0.00	0.00	
1,510.7	2.14	158.19	1,510.0	-37.5	15.0	-37.4	0.00	0.00	Williams Fork
1,600.0	2.14	158.19	1,599.2	-40.6	16.3	-40.5	0.00	0.00	
1,700.0	2.14	158.19	1,699.1	-44.1	17.6	-44.0	0.00	0.00	
1,800.0	2.14	158.19	1,799.1	-47.6	19.0	-47.4	0.00	0.00	
1,900.0	2.14	158.19	1,899.0	-51.0	20.4	-50.9	0.00	0.00	
2,000.0	2.14	158.19	1,998.9	-54.5	21.8	-54.3	0.00	0.00	
2,100.0	2.14	158.19	2,098.8	-57.9	23.2	-57.8	0.00	0.00	
2,200.0	2.14	158.19	2,198.8	-61.4	24.6	-61.3	0.00	0.00	
2,300.0	2.14	158.19	2,298.7	-64.9	26.0	-64.7	0.00	0.00	
2,400.0	2.14	158.19	2,398.6	-68.3	27.4	-68.2	0.00	0.00	
2,500.0	2.14	158.19	2,498.6	-71.8	28.7	-71.6	0.00	0.00	
2,600.0	2.14	158.19	2,598.5	-75.3	30.1	-75.1	0.00	0.00	
2,700.0	2.14	158.19	2,698.4	-78.7	31.5	-78.5	0.00	0.00	
2,800.0	2.14	158.19	2,798.4	-82.2	32.9	-82.0	0.00	0.00	
2,900.0	2.14	158.19	2,898.3	-85.6	34.3	-85.4	0.00	0.00	
3,000.0	2.14	158.19	2,998.2	-89.1	35.7	-88.9	0.00	0.00	
3,100.0	2.14	158.19	3,098.1	-92.6	37.1	-92.3	0.00	0.00	
3,200.0	2.14	158.19	3,198.1	-96.0	38.4	-95.8	0.00	0.00	
3,300.0	2.14	158.19	3,298.0	-99.5	39.8	-99.3	0.00	0.00	
3,400.0	2.14	158.19	3,397.9	-103.0	41.2	-102.7	0.00	0.00	
3,500.0	2.14	158.19	3,497.9	-106.4	42.6	-106.2	0.00	0.00	
3,600.0	2.14	158.19	3,597.8	-109.9	44.0	-109.6	0.00	0.00	
3,700.0	2.14	158.19	3,697.7	-113.4	45.4	-113.1	0.00	0.00	
3,800.0	2.14	158.19	3,797.7	-116.8	46.8	-116.5	0.00	0.00	
3,846.4	2.14	158.19	3,844.0	-118.4	47.4	-118.1	0.00	0.00	Rollins
3,900.0	2.14	158.19	3,897.6	-120.3	48.1	-120.0	0.00	0.00	
4,000.0	2.14	158.19	3,997.5	-123.7	49.5	-123.4	0.00	0.00	
4,100.0	2.14	158.19	4,097.4	-127.2	50.9	-126.9	0.00	0.00	
4,200.0	2.14	158.19	4,197.4	-130.7	52.3	-130.3	0.00	0.00	
4,300.0	2.14	158.19	4,297.3	-134.1	53.7	-133.8	0.00	0.00	
4,400.0	2.14	158.19	4,397.2	-137.6	55.1	-137.3	0.00	0.00	
4,500.0	2.14	158.19	4,497.2	-141.1	56.5	-140.7	0.00	0.00	
4,600.0	2.14	158.19	4,597.1	-144.5	57.8	-144.2	0.00	0.00	
4,700.0	2.14	158.19	4,697.0	-148.0	59.2	-147.6	0.00	0.00	
4,800.0	2.14	158.19	4,797.0	-151.4	60.6	-151.1	0.00	0.00	

Cathedral Energy Services

Planning Report

Database:	EDM 5000.1 US Multi Users DB	Local Co-ordinate Reference:	Well DH5A-32 C08 799
Company:	EnCana Oil & Gas (USA) Inc	TVD Reference:	WELL @ 6480.0ft (Original Well Elev)
Project:	Kimball Mtn	MD Reference:	WELL @ 6480.0ft (Original Well Elev)
Site:	Section 8 (C08 799)	North Reference:	True
Well:	DH5A-32 C08 799	Survey Calculation Method:	Minimum Curvature
Wellbore:	HZ		
Design:	Plan #2		

Planned Survey									
Measured Depth (ft)	Inclination (°)	Azimuth (°)	Vertical Depth (ft)	+N/-S (ft)	+E/-W (ft)	Vertical Section (ft)	Dogleg Rate (°/100ft)	Build Rate (°/100ft)	Comments / Formations
4,847.1	2.14	158.19	4,844.0	-153.1	61.3	-152.7	0.00	0.00	Mancos
4,900.0	2.14	158.19	4,896.9	-154.9	62.0	-154.5	0.00	0.00	
5,000.0	2.14	158.19	4,996.8	-158.4	63.4	-158.0	0.00	0.00	
5,100.0	2.14	158.19	5,096.8	-161.8	64.8	-161.4	0.00	0.00	
5,200.0	2.14	158.19	5,196.7	-165.3	66.2	-164.9	0.00	0.00	
5,300.0	2.14	158.19	5,296.6	-168.8	67.5	-168.3	0.00	0.00	
5,400.0	2.14	158.19	5,396.5	-172.2	68.9	-171.8	0.00	0.00	
5,500.0	2.14	158.19	5,496.5	-175.7	70.3	-175.3	0.00	0.00	
5,600.0	2.14	158.19	5,596.4	-179.1	71.7	-178.7	0.00	0.00	
5,700.0	2.14	158.19	5,696.3	-182.6	73.1	-182.2	0.00	0.00	
5,800.0	2.14	158.19	5,796.3	-186.1	74.5	-185.6	0.00	0.00	
5,900.0	2.14	158.19	5,896.2	-189.5	75.9	-189.1	0.00	0.00	
6,000.0	2.14	158.19	5,996.1	-193.0	77.2	-192.5	0.00	0.00	
6,100.0	2.14	158.19	6,096.1	-196.5	78.6	-196.0	0.00	0.00	
6,200.0	2.14	158.19	6,196.0	-199.9	80.0	-199.4	0.00	0.00	
6,300.0	2.14	158.19	6,295.9	-203.4	81.4	-202.9	0.00	0.00	
6,400.0	2.14	158.19	6,395.8	-206.9	82.8	-206.3	0.00	0.00	
6,500.0	2.14	158.19	6,495.8	-210.3	84.2	-209.8	0.00	0.00	
6,600.0	2.14	158.19	6,595.7	-213.8	85.6	-213.3	0.00	0.00	
6,700.0	2.14	158.19	6,695.6	-217.2	87.0	-216.7	0.00	0.00	
6,764.4	2.14	158.19	6,760.0	-219.5	87.8	-218.9	0.00	0.00	
6,800.0	2.14	158.19	6,795.6	-220.7	88.3	-220.2	0.00	0.00	Niobrara
6,900.0	2.14	158.19	6,895.5	-224.2	89.7	-223.6	0.00	0.00	
7,000.0	2.14	158.19	6,995.4	-227.6	91.1	-227.1	0.00	0.00	
7,100.0	2.14	158.19	7,095.4	-231.1	92.5	-230.5	0.00	0.00	
7,200.0	2.14	158.19	7,195.3	-234.6	93.9	-234.0	0.00	0.00	
7,226.3	2.14	158.19	7,221.6	-235.5	94.2	-234.9	0.00	0.00	
7,300.0	5.44	8.14	7,295.2	-233.3	95.3	-232.7	10.00	4.48	Start 10° Build @ 7,226' MD
7,400.0	15.40	2.69	7,393.4	-215.3	96.5	-214.7	10.00	9.96	
7,500.0	25.39	1.49	7,487.0	-180.5	97.7	-179.9	10.00	9.99	
7,600.0	35.39	0.94	7,573.2	-130.0	98.8	-129.4	10.00	10.00	
7,612.1	36.60	0.89	7,583.0	-122.8	98.9	-122.2	10.00	10.00	Nio1Kit
7,700.0	45.39	0.60	7,649.2	-65.3	99.6	-64.7	10.00	10.00	
7,800.0	55.39	0.37	7,712.9	11.7	100.3	12.3	10.00	10.00	
7,900.0	65.38	0.19	7,762.3	98.5	100.7	99.1	10.00	10.00	
8,000.0	75.38	0.03	7,795.8	192.6	100.9	193.2	10.00	10.00	
8,100.0	85.38	359.89	7,812.5	291.0	100.8	291.6	10.00	10.00	
8,156.2	91.00	359.81	7,814.3	347.2	100.6	347.8	10.00	10.00	LP @ 7,814' TVD, 91° - DH5A-32 C08 799 LP
8,200.0	91.00	359.81	7,813.5	391.0	100.5	391.6	0.00	0.00	
8,300.0	91.00	359.81	7,811.8	491.0	100.2	491.6	0.00	0.00	
8,400.0	91.00	359.81	7,810.0	590.9	99.8	591.5	0.00	0.00	
8,500.0	91.00	359.81	7,808.3	690.9	99.5	691.5	0.00	0.00	
8,600.0	91.00	359.81	7,806.5	790.9	99.2	791.5	0.00	0.00	
8,700.0	91.00	359.81	7,804.8	890.9	98.9	891.5	0.00	0.00	
8,800.0	91.00	359.81	7,803.0	990.9	98.5	991.5	0.00	0.00	
8,900.0	91.00	359.81	7,801.3	1,090.9	98.2	1,091.4	0.00	0.00	
9,000.0	91.00	359.81	7,799.5	1,190.8	97.9	1,191.4	0.00	0.00	
9,100.0	91.00	359.81	7,797.8	1,290.8	97.6	1,291.4	0.00	0.00	
9,200.0	91.00	359.81	7,796.0	1,390.8	97.2	1,391.4	0.00	0.00	
9,300.0	91.00	359.81	7,794.3	1,490.8	96.9	1,491.4	0.00	0.00	
9,400.0	91.00	359.81	7,792.5	1,590.8	96.6	1,591.3	0.00	0.00	
9,500.0	91.00	359.81	7,790.8	1,690.8	96.3	1,691.3	0.00	0.00	

Cathedral Energy Services

Planning Report

Database:	EDM 5000.1 US Multi Users DB	Local Co-ordinate Reference:	Well DH5A-32 C08 799
Company:	EnCana Oil & Gas (USA) Inc	TVD Reference:	WELL @ 6480.0ft (Original Well Elev)
Project:	Kimball Mtn	MD Reference:	WELL @ 6480.0ft (Original Well Elev)
Site:	Section 8 (C08 799)	North Reference:	True
Well:	DH5A-32 C08 799	Survey Calculation Method:	Minimum Curvature
Wellbore:	HZ		
Design:	Plan #2		

Planned Survey

Measured Depth (ft)	Inclination (°)	Azimuth (°)	Vertical Depth (ft)	+N/-S (ft)	+E/-W (ft)	Vertical Section (ft)	Dogleg Rate (°/100ft)	Build Rate (°/100ft)	Comments / Formations
9,600.0	91.00	359.81	7,789.0	1,790.8	95.9	1,791.3	0.00	0.00	
9,700.0	91.00	359.81	7,787.3	1,890.7	95.6	1,891.3	0.00	0.00	
9,800.0	91.00	359.81	7,785.5	1,990.7	95.3	1,991.3	0.00	0.00	
9,900.0	91.00	359.81	7,783.8	2,090.7	94.9	2,091.2	0.00	0.00	
10,000.0	91.00	359.81	7,782.0	2,190.7	94.6	2,191.2	0.00	0.00	
10,100.0	91.00	359.81	7,780.3	2,290.7	94.3	2,291.2	0.00	0.00	
10,200.0	91.00	359.81	7,778.5	2,390.7	94.0	2,391.2	0.00	0.00	
10,300.0	91.00	359.81	7,776.8	2,490.6	93.6	2,491.2	0.00	0.00	
10,400.0	91.00	359.81	7,775.1	2,590.6	93.3	2,591.1	0.00	0.00	
10,500.0	91.00	359.81	7,773.3	2,690.6	93.0	2,691.1	0.00	0.00	
10,600.0	91.00	359.81	7,771.6	2,790.6	92.7	2,791.1	0.00	0.00	
10,700.0	91.00	359.81	7,769.8	2,890.6	92.3	2,891.1	0.00	0.00	
10,800.0	91.00	359.81	7,768.1	2,990.6	92.0	2,991.1	0.00	0.00	
10,900.0	91.00	359.81	7,766.3	3,090.5	91.7	3,091.0	0.00	0.00	
11,000.0	91.00	359.81	7,764.6	3,190.5	91.4	3,191.0	0.00	0.00	
11,100.0	91.00	359.81	7,762.8	3,290.5	91.0	3,291.0	0.00	0.00	
11,200.0	91.00	359.81	7,761.1	3,390.5	90.7	3,391.0	0.00	0.00	
11,300.0	91.00	359.81	7,759.3	3,490.5	90.4	3,491.0	0.00	0.00	
11,400.0	91.00	359.81	7,757.6	3,590.5	90.1	3,590.9	0.00	0.00	
11,500.0	91.00	359.81	7,755.8	3,690.5	89.7	3,690.9	0.00	0.00	
11,600.0	91.00	359.81	7,754.1	3,790.4	89.4	3,790.9	0.00	0.00	
11,700.0	91.00	359.81	7,752.3	3,890.4	89.1	3,890.9	0.00	0.00	
11,800.0	91.00	359.81	7,750.6	3,990.4	88.7	3,990.9	0.00	0.00	
11,900.0	91.00	359.81	7,748.8	4,090.4	88.4	4,090.8	0.00	0.00	
12,000.0	91.00	359.81	7,747.1	4,190.4	88.1	4,190.8	0.00	0.00	
12,100.0	91.00	359.81	7,745.3	4,290.4	87.8	4,290.8	0.00	0.00	
12,200.0	91.00	359.81	7,743.6	4,390.3	87.4	4,390.8	0.00	0.00	
12,300.0	91.00	359.81	7,741.8	4,490.3	87.1	4,490.8	0.00	0.00	
12,400.0	91.00	359.81	7,740.1	4,590.3	86.8	4,590.8	0.00	0.00	
12,500.0	91.00	359.81	7,738.3	4,690.3	86.5	4,690.7	0.00	0.00	
12,600.0	91.00	359.81	7,736.6	4,790.3	86.1	4,790.7	0.00	0.00	
12,700.0	91.00	359.81	7,734.8	4,890.3	85.8	4,890.7	0.00	0.00	
12,800.0	91.00	359.81	7,733.1	4,990.2	85.5	4,990.7	0.00	0.00	
12,900.0	91.00	359.81	7,731.4	5,090.2	85.2	5,090.7	0.00	0.00	
13,000.0	91.00	359.81	7,729.6	5,190.2	84.8	5,190.6	0.00	0.00	
13,100.0	91.00	359.81	7,727.9	5,290.2	84.5	5,290.6	0.00	0.00	
13,200.0	91.00	359.81	7,726.1	5,390.2	84.2	5,390.6	0.00	0.00	
13,300.0	91.00	359.81	7,724.4	5,490.2	83.8	5,490.6	0.00	0.00	
13,400.0	91.00	359.81	7,722.6	5,590.2	83.5	5,590.6	0.00	0.00	
13,500.0	91.00	359.81	7,720.9	5,690.1	83.2	5,690.5	0.00	0.00	
13,600.0	91.00	359.81	7,719.1	5,790.1	82.9	5,790.5	0.00	0.00	
13,700.0	91.00	359.81	7,717.4	5,890.1	82.5	5,890.5	0.00	0.00	
13,800.0	91.00	359.81	7,715.6	5,990.1	82.2	5,990.5	0.00	0.00	
13,900.0	91.00	359.81	7,713.9	6,090.1	81.9	6,090.5	0.00	0.00	
14,000.0	91.00	359.81	7,712.1	6,190.1	81.6	6,190.4	0.00	0.00	
14,100.0	91.00	359.81	7,710.4	6,290.0	81.2	6,290.4	0.00	0.00	
14,200.0	91.00	359.81	7,708.6	6,390.0	80.9	6,390.4	0.00	0.00	
14,300.0	91.00	359.81	7,706.9	6,490.0	80.6	6,490.4	0.00	0.00	
14,400.0	91.00	359.81	7,705.1	6,590.0	80.3	6,590.4	0.00	0.00	
14,500.0	91.00	359.81	7,703.4	6,690.0	79.9	6,690.3	0.00	0.00	
14,600.0	91.00	359.81	7,701.6	6,790.0	79.6	6,790.3	0.00	0.00	
14,700.0	91.00	359.81	7,699.9	6,889.9	79.3	6,890.3	0.00	0.00	

Cathedral Energy Services

Planning Report

Database:	EDM 5000.1 US Multi Users DB	Local Co-ordinate Reference:	Well DH5A-32 C08 799
Company:	EnCana Oil & Gas (USA) Inc	TVD Reference:	WELL @ 6480.0ft (Original Well Elev)
Project:	Kimball Mtn	MD Reference:	WELL @ 6480.0ft (Original Well Elev)
Site:	Section 8 (C08 799)	North Reference:	True
Well:	DH5A-32 C08 799	Survey Calculation Method:	Minimum Curvature
Wellbore:	HZ		
Design:	Plan #2		

Planned Survey									
Measured Depth (ft)	Inclination (°)	Azimuth (°)	Vertical Depth (ft)	+N/-S (ft)	+E/-W (ft)	Vertical Section (ft)	Dogleg Rate (°/100ft)	Build Rate (°/100ft)	Comments / Formations
14,800.0	91.00	359.81	7,698.1	6,989.9	79.0	6,990.3	0.00	0.00	
14,900.0	91.00	359.81	7,696.4	7,089.9	78.6	7,090.3	0.00	0.00	
15,000.0	91.00	359.81	7,694.6	7,189.9	78.3	7,190.2	0.00	0.00	
15,100.0	91.00	359.81	7,692.9	7,289.9	78.0	7,290.2	0.00	0.00	
15,200.0	91.00	359.81	7,691.2	7,389.9	77.6	7,390.2	0.00	0.00	
15,300.0	91.00	359.81	7,689.4	7,489.9	77.3	7,490.2	0.00	0.00	
15,400.0	91.00	359.81	7,687.7	7,589.8	77.0	7,590.2	0.00	0.00	
15,500.0	91.00	359.81	7,685.9	7,689.8	76.7	7,690.1	0.00	0.00	
15,600.0	91.00	359.81	7,684.2	7,789.8	76.3	7,790.1	0.00	0.00	
15,700.0	91.00	359.81	7,682.4	7,889.8	76.0	7,890.1	0.00	0.00	
15,800.0	91.00	359.81	7,680.7	7,989.8	75.7	7,990.1	0.00	0.00	
15,900.0	91.00	359.81	7,678.9	8,089.8	75.4	8,090.1	0.00	0.00	
16,000.0	91.00	359.81	7,677.2	8,189.7	75.0	8,190.0	0.00	0.00	
16,100.0	91.00	359.81	7,675.4	8,289.7	74.7	8,290.0	0.00	0.00	
16,200.0	91.00	359.81	7,673.7	8,389.7	74.4	8,390.0	0.00	0.00	
16,300.0	91.00	359.81	7,671.9	8,489.7	74.1	8,490.0	0.00	0.00	
16,400.0	91.00	359.81	7,670.2	8,589.7	73.7	8,590.0	0.00	0.00	
16,500.0	91.00	359.81	7,668.4	8,689.7	73.4	8,689.9	0.00	0.00	
16,600.0	91.00	359.81	7,666.7	8,789.6	73.1	8,789.9	0.00	0.00	
16,700.0	91.00	359.81	7,664.9	8,889.6	72.7	8,889.9	0.00	0.00	
16,800.0	91.00	359.81	7,663.2	8,989.6	72.4	8,989.9	0.00	0.00	
16,900.0	91.00	359.81	7,661.4	9,089.6	72.1	9,089.9	0.00	0.00	
17,000.0	91.00	359.81	7,659.7	9,189.6	71.8	9,189.8	0.00	0.00	
17,100.0	91.00	359.81	7,657.9	9,289.6	71.4	9,289.8	0.00	0.00	
17,200.0	91.00	359.81	7,656.2	9,389.6	71.1	9,389.8	0.00	0.00	
17,300.0	91.00	359.81	7,654.4	9,489.5	70.8	9,489.8	0.00	0.00	
17,400.0	91.00	359.81	7,652.7	9,589.5	70.5	9,589.8	0.00	0.00	
17,500.0	91.00	359.81	7,650.9	9,689.5	70.1	9,689.8	0.00	0.00	
17,600.0	91.00	359.81	7,649.2	9,789.5	69.8	9,789.7	0.00	0.00	
17,700.0	91.00	359.81	7,647.5	9,889.5	69.5	9,889.7	0.00	0.00	
17,800.0	91.00	359.81	7,645.7	9,989.5	69.2	9,989.7	0.00	0.00	
17,900.0	91.00	359.81	7,644.0	10,089.4	68.8	10,089.7	0.00	0.00	
18,000.0	91.00	359.81	7,642.2	10,189.4	68.5	10,189.7	0.00	0.00	
18,100.0	91.00	359.81	7,640.5	10,289.4	68.2	10,289.6	0.00	0.00	
18,200.0	91.00	359.81	7,638.7	10,389.4	67.9	10,389.6	0.00	0.00	
18,300.0	91.00	359.81	7,637.0	10,489.4	67.5	10,489.6	0.00	0.00	
18,400.0	91.00	359.81	7,635.2	10,589.4	67.2	10,589.6	0.00	0.00	
18,500.0	91.00	359.81	7,633.5	10,689.3	66.9	10,689.6	0.00	0.00	
18,600.0	91.00	359.81	7,631.7	10,789.3	66.5	10,789.5	0.00	0.00	
18,700.0	91.00	359.81	7,630.0	10,889.3	66.2	10,889.5	0.00	0.00	
18,734.0	91.00	359.81	7,629.4	10,923.3	66.1	10,923.5	0.00	0.00	TD @ 18,734' MD - DH5A-32 C08 799 PBHL

Cathedral Energy Services

Planning Report

Database:	EDM 5000.1 US Multi Users DB	Local Co-ordinate Reference:	Well DH5A-32 C08 799
Company:	EnCana Oil & Gas (USA) Inc	TVD Reference:	WELL @ 6480.0ft (Original Well Elev)
Project:	Kimball Mtn	MD Reference:	WELL @ 6480.0ft (Original Well Elev)
Site:	Section 8 (C08 799)	North Reference:	True
Well:	DH5A-32 C08 799	Survey Calculation Method:	Minimum Curvature
Wellbore:	HZ		
Design:	Plan #2		

Targets									
Target Name	Dip Angle	Dip Dir.	TVD	+N/-S	+E/-W	Northing	Easting	Latitude	Longitude
- hit/miss target	(°)	(°)	(ft)	(ft)	(ft)	(ft)	(ft)		
- Shape									
DH5A-32 C08 799 PBHL	0.00	0.00	7,629.4	10,923.3	66.1	1,619,101.75	2,163,062.81	39° 29' 44.48 N	108° 27' 58.62 W
- plan hits target center									
- Point									
DH5A-32 C08 799 LP	0.00	0.00	7,814.3	347.2	100.6	1,608,530.18	2,162,752.03	39° 27' 59.95 N	108° 27' 58.18 W
- plan hits target center									
- Point									

Formations						
Measured Depth	Vertical Depth	Name	Lithology	Dip	Dip Direction	
(ft)	(ft)			(°)	(°)	
1,510.7	1,510.0	Williams Fork				
3,846.4	3,844.0	Rollins				
4,847.1	4,844.0	Mancos				
6,764.4	6,760.0	Niobrara				
7,612.1	7,583.0	Nio1Kit				

Plan Annotations					
Measured Depth	Vertical Depth	Local Coordinates			
(ft)	(ft)	+N/-S	+E/-W	Comment	
(ft)	(ft)	(ft)	(ft)		
400.0	400.0	0.0	0.0	KOP @ 400'	
453.4	453.4	-0.9	0.4	EOB @ Inc. = 2.14°	
7,226.3	7,221.6	-235.5	94.2	Start 10° Build @ 7,226' MD	
8,156.2	7,814.3	347.2	100.6	LP @ 7,814' TVD, 91°	
18,734.0	7,629.4	10,923.3	66.1	TD @ 18,734' MD	