

# **LEGEND:**

 **EXISTING LOCATION**



**Encana OIL & GAS (USA) INC.**

**WELL PAD C08 799**

**SECTION 8, T7S, R99W, 6th P.M.**

**NE 1/4 NW 1/4**

**SHEET 8 of 11**



**Uintah Engineering & Land Surveying**  
**85 South 200 East Vernal, Utah 84078**  
**(435) 789-1017 \* FAX (435) 789-1813**

**ACCESS ROAD**  
**MAP**

**08 13 10**  
**MONTH DAY YEAR**

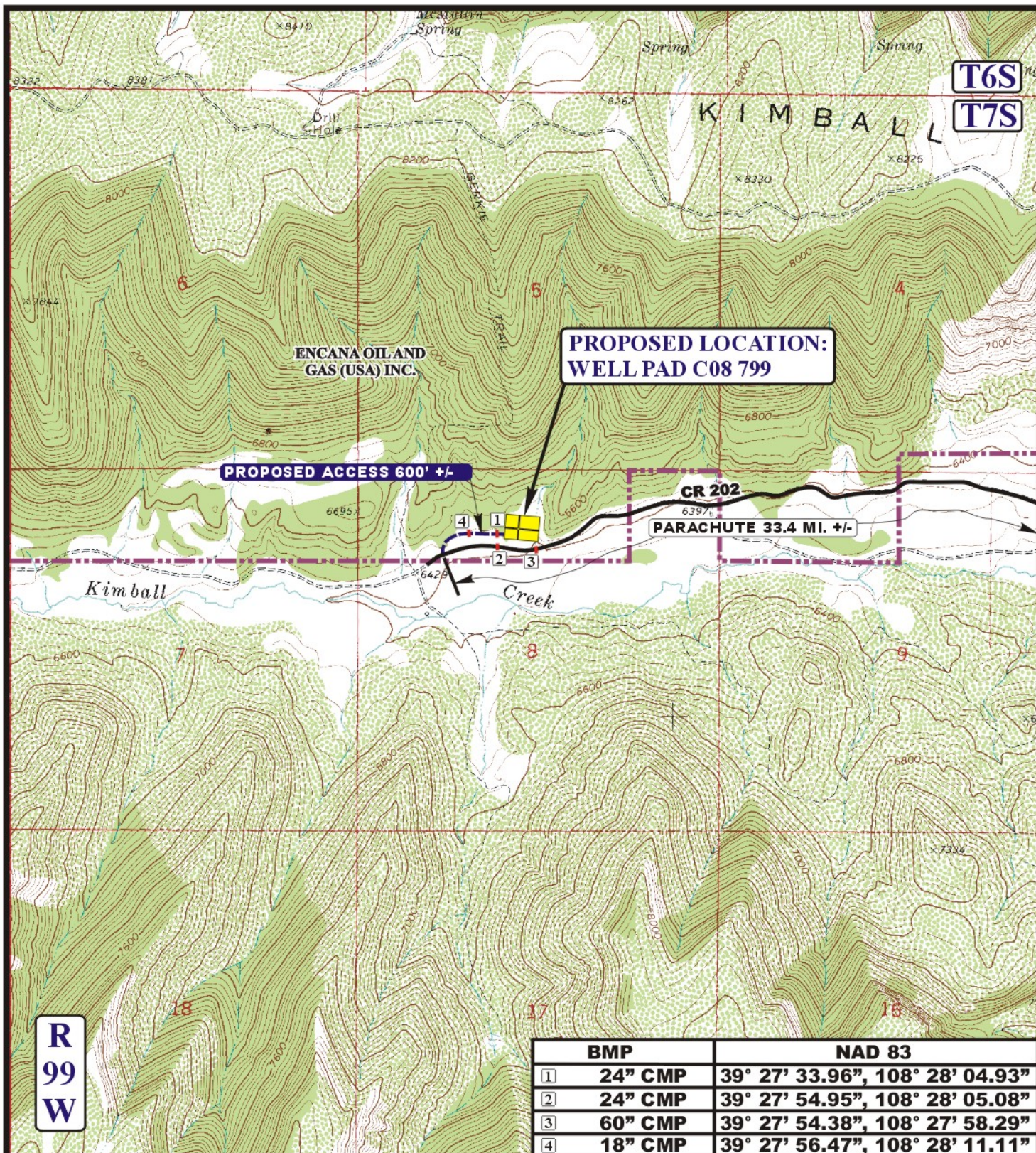
**SCALE: 1:100,000**

**DRAWN BY: Z.L.**

**REVISED: 03-30-11**







	BMP	NAD 83
①	24" CMP	39° 27' 33.96", 108° 28' 04.93"
②	24" CMP	39° 27' 54.95", 108° 28' 05.08"
③	60" CMP	39° 27' 54.38", 108° 27' 58.29"
④	18" CMP	39° 27' 56.47", 108° 28' 11.11"

# LEGEND:

EXISTING ROAD  
 PROPOSED ACCESS



Encana OIL & GAS (USA) INC.

WELL PAD C08 799

SECTION 8, T7S, R99W, 6th P.M.

NE 1/4 NW 1/4

SHEET 9 of 11



**Uintah Engineering & Land Surveying**  
 85 South 200 East Vernal, Utah 84078  
 (435) 789-1017 \* FAX (435) 789-1813

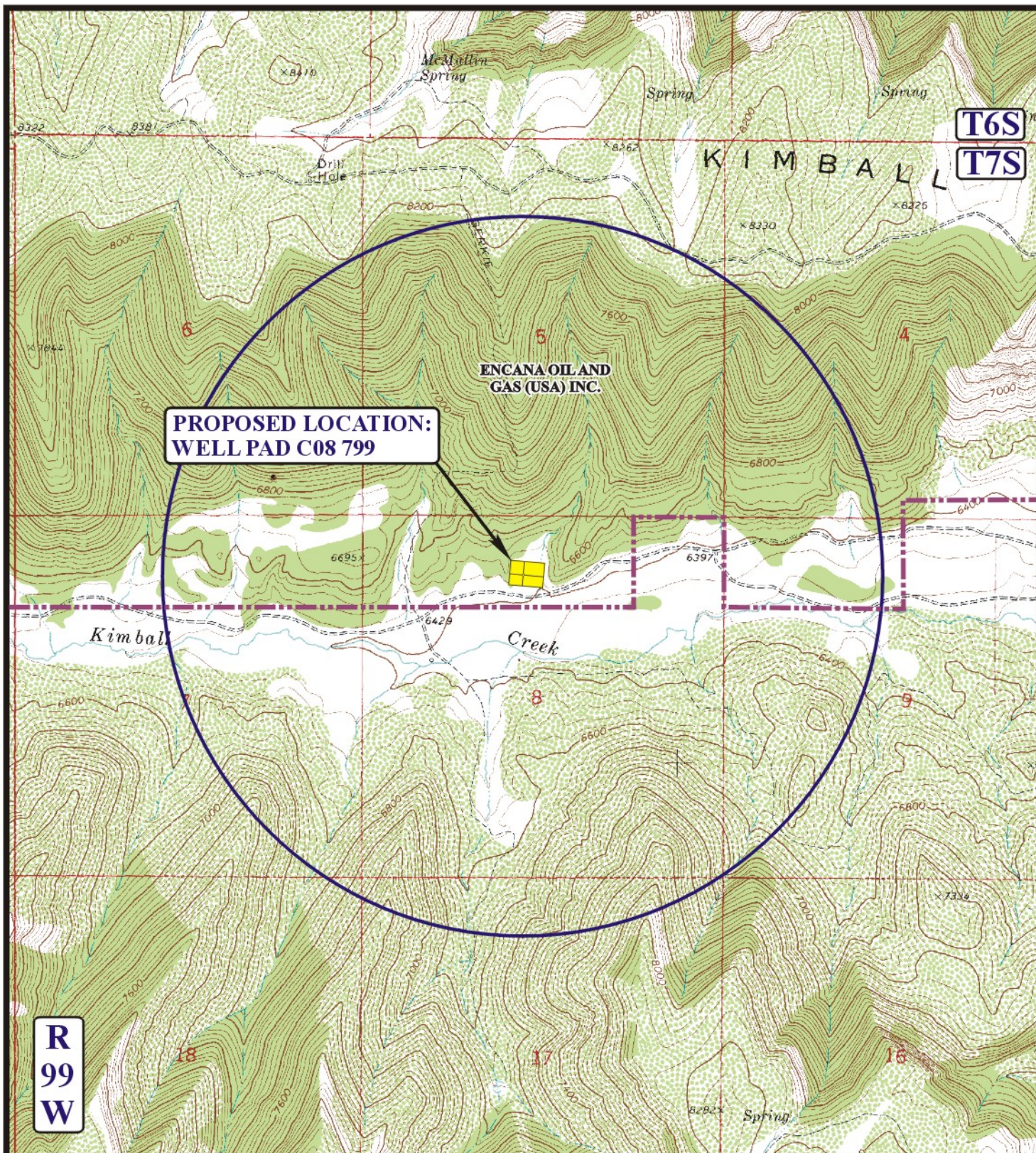
**TOPOGRAPHIC**  
**MAP**

**08** **13** **10**  
 MONTH DAY YEAR

SCALE: 1" = 2000' DRAWN BY: Z.L. REVISED: 03-30-11

**B**  
**TOPO**





# **LEGEND:**

- DISPOSAL WELLS
- PRODUCING WELLS
- SHUT IN WELLS
- WATER WELLS
- ABANDONED WELLS
- TEMPORARILY ABANDONED

**Encana OIL & GAS (USA) INC.**

**WELL PAD C08 799**

**SECTION 8, T7S, R99W, 6th P.M.**

**NE 1/4 NW 1/4 SHEET 10 of 11**



**Uintah Engineering & Land Surveying**  
 85 South 200 East Vernal, Utah 84078  
 (435) 789-1017 \* FAX (435) 789-1813



**TOPOGRAPHIC MAP**

**08 13 10**  
 MONTH DAY YEAR

SCALE: 1" = 2000' DRAWN BY: Z.L. REVISED: 00-00-00

