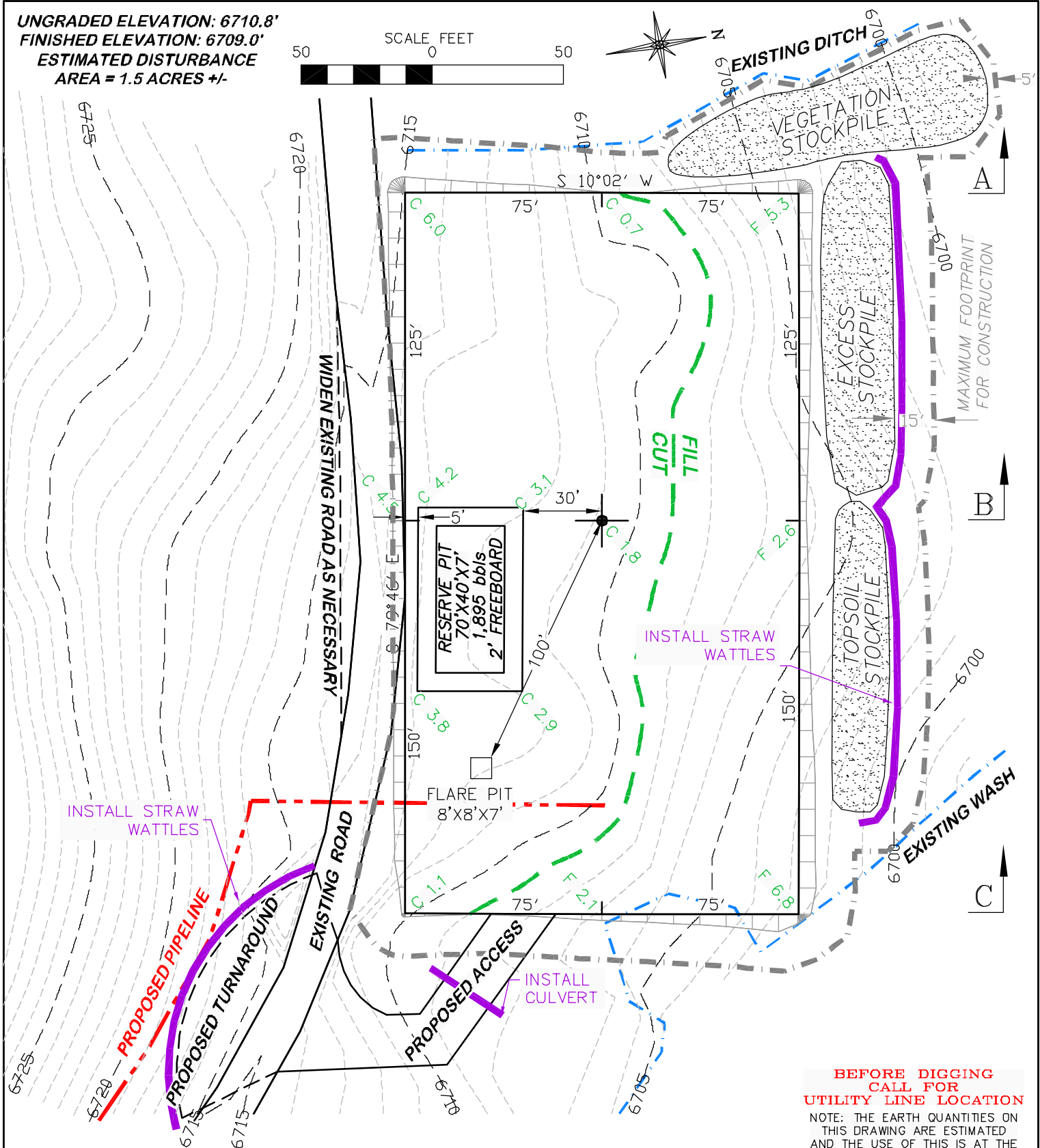


SCALE FEET

50 0 50



NOTE: THE EARTH QUANTITIES ON THIS DRAWING ARE ESTIMATED AND THE USE OF THIS IS AT THE RESPONSIBILITY OF THE USER.

CR 14-31 PAD



RIFFIN & ASSOCIATES, INC.
1414 ELK ST., ROCK SPRINGS, WY 82901

(307) 362-5028

SCALE: 1" = 50'

DRG JOB No. 17984

EXHIBIT 2C

**NW1/4 OF SW 1/4 SECTION 14, T1N, R100W, 6th P.M.,
RIO BLANCO COUNTY, COLORADO**

UNGRADED ELEVATION: 6710.8'
FINISHED ELEVATION: 6709.0'

<i>DRAWN: 10/11/10 - DEH</i>	<i>SCALE: 1" = 50'</i>
<i>REVISED: 5/11/11 - RAB</i>	<i>DRG JOB No. 17984</i>
<i>ADDED LOCATION DWG IN TITLE</i>	<i>EXHIBIT 2C</i>