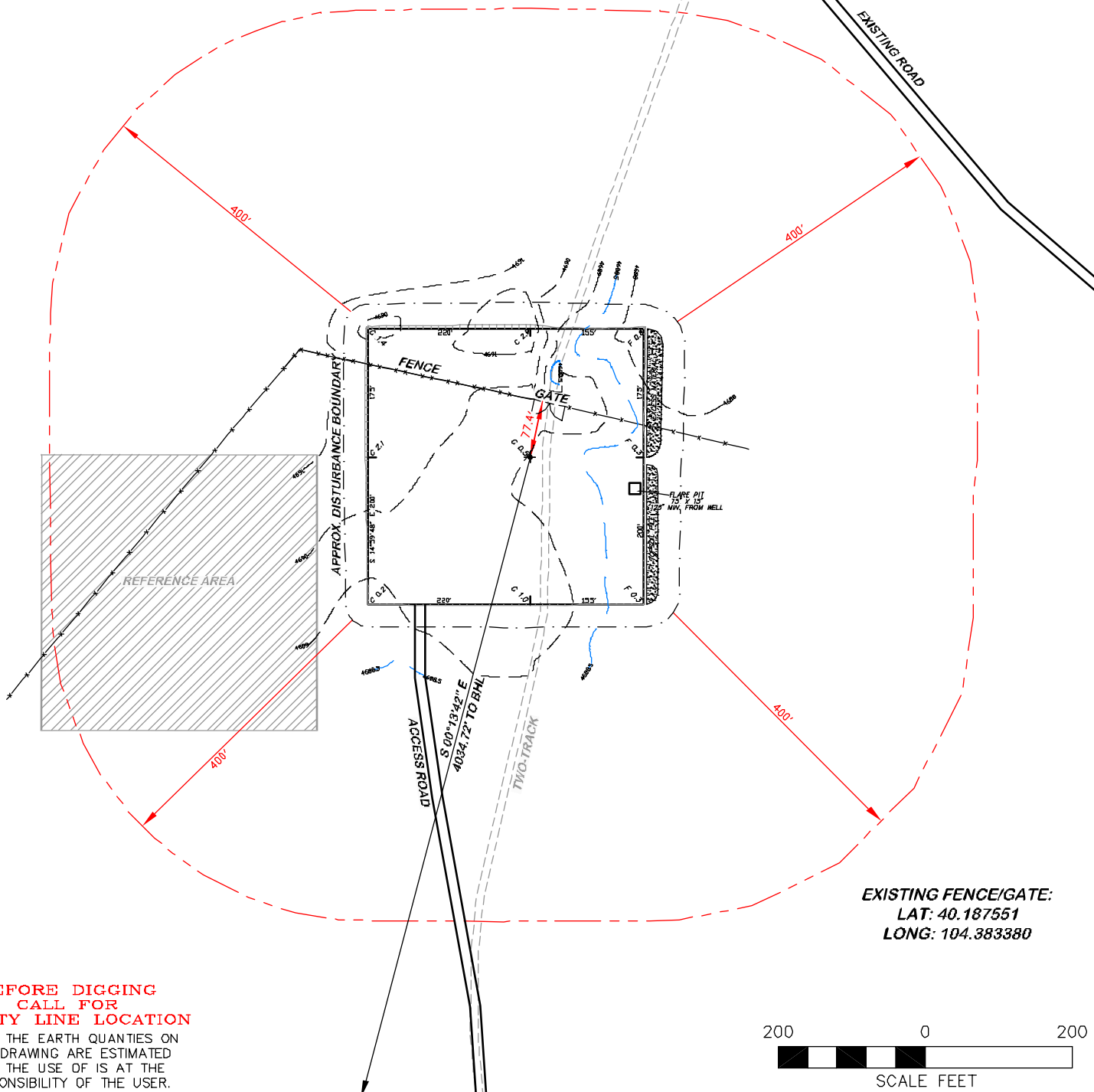


APPROXIMATE DISTURBANCE AREA: 4.6 ACRES±
 0.8% GRADE ON AN EASTERLY SLOPE
 UNGRADED ELEVATION: 4689.0'
 FINISHED ELEVATION: 4688.5'



EXISTING FENCE/GATE:
 LAT: 40.187551
 LONG: 104.383380

**BEFORE DIGGING
 CALL FOR
 UTILITY LINE LOCATION**

NOTE: THE EARTH QUANTITIES ON THIS DRAWING ARE ESTIMATED AND THE USE OF IS AT THE RESPONSIBILITY OF THE USER.

DRG RIFFIN & ASSOCIATES, INC.
 (307) 362-6028 1414 ELK ST., ROCK SPRINGS, WY 82901

LOCATION DRAWING

**CHESAPEAKE ENERGY, LLC.
 STATE 36-3-63 1H
 SECTION 36, T3N, R63W**

DRAWN: 3/21/11 - MMM

SCALE: 1" = 200'

REVISED: 4/29/11 - MMM

DRG JOB No. 18371

REVISED WELL NAME

EXHIBIT 2D

**UNGRADED ELEVATION: 4689.0'
 FINISHED ELEVATION: 4688.5'**