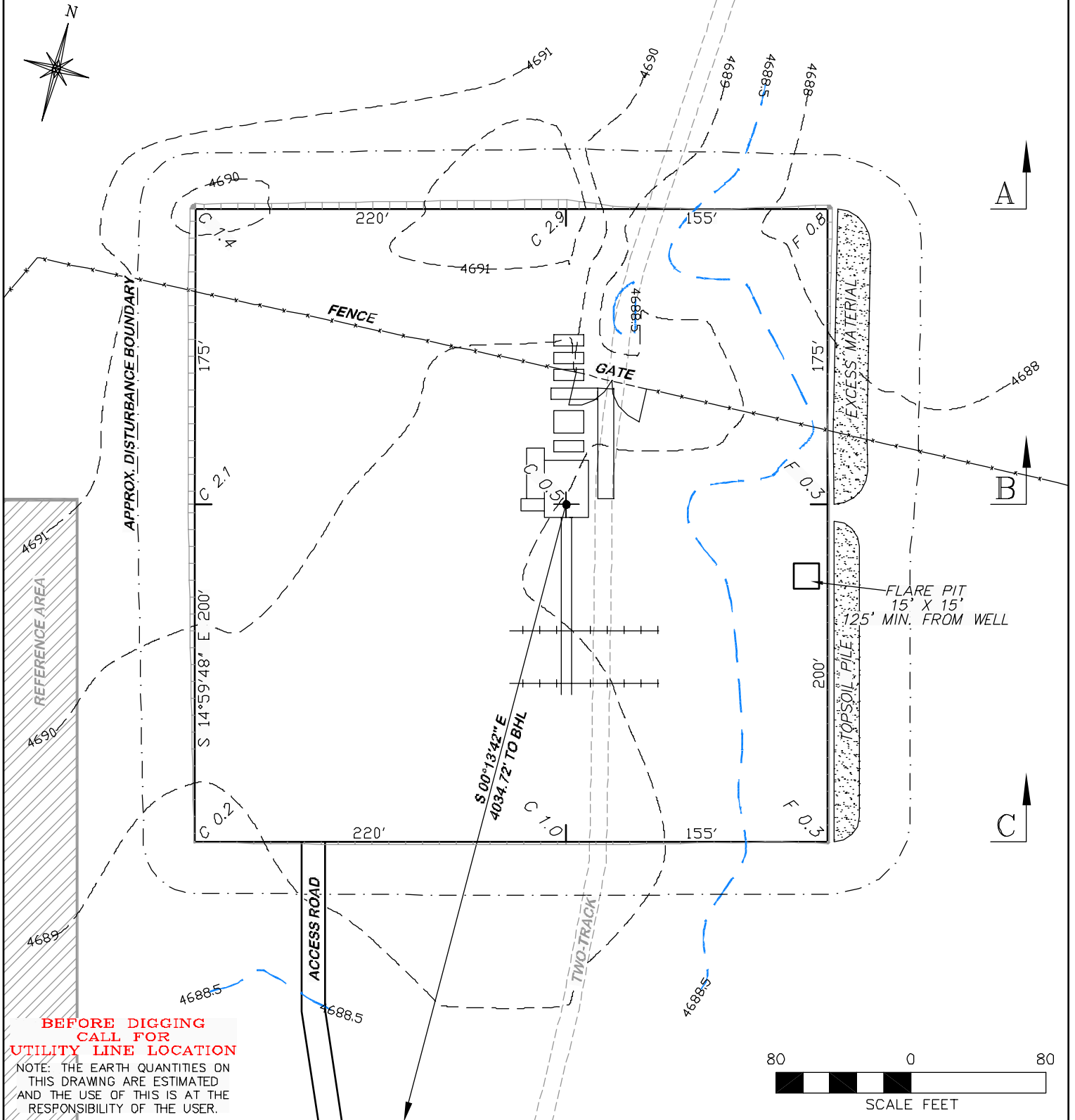
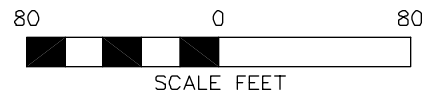


APPROXIMATE DISTURBANCE AREA: 4.6 ACRES±
 0.8% GRADE ON AN EASTERLY SLOPE
 UNGRADED ELEVATION: 4689.0'
 FINISHED ELEVATION: 4688.5'

2A ATTACHMENT
8A



**BEFORE DIGGING
 CALL FOR
 UTILITY LINE LOCATION**
 NOTE: THE EARTH QUANTITIES ON
 THIS DRAWING ARE ESTIMATED
 AND THE USE OF THIS IS AT THE
 RESPONSIBILITY OF THE USER.



DRG RIFFIN & ASSOCIATES, INC.
 1414 ELK ST., ROCK SPRINGS, WY 82901
 (307) 382-5028

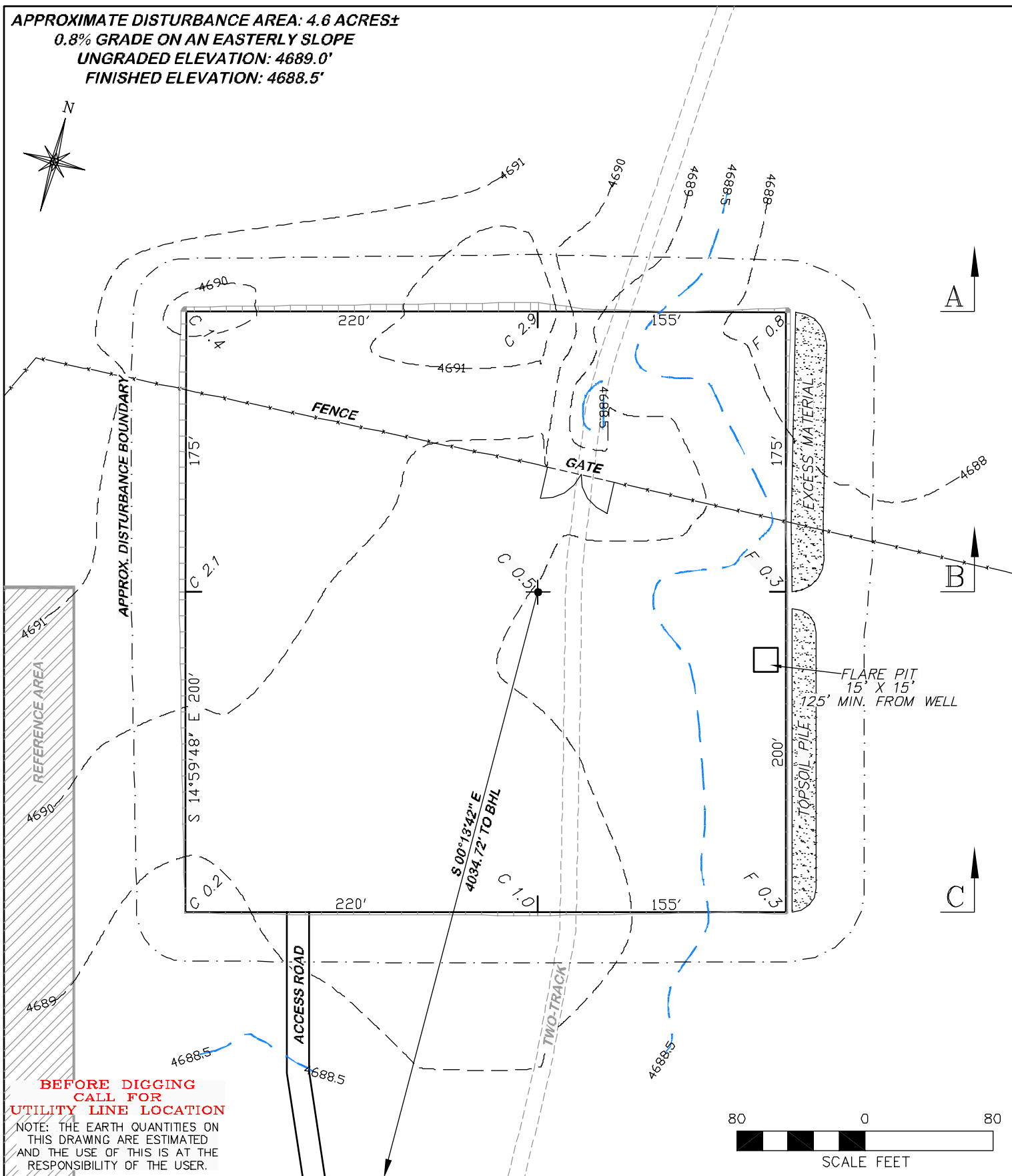
CONSTRUCTION LAYOUT DRAWING 1 OF 3

CHESAPEAKE ENERGY, LLC.
STATE 36-3-63 1H
SECTION 36, T3N, R63W

DRAWN: 3/21/11 - MMM	SCALE: 1" = 80'
REVISED: 4/29/11 - MMM	DRG JOB No. 18371
REVISED WELL NAME	EXHIBIT 2

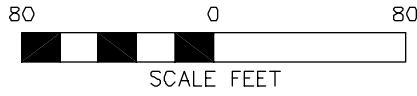
ITEM	ESTIMATED EARTHWORK			
	CUT	FILL	TOPSOIL	EXCESS
PAD	4733 CY	116 CY	2605 CY	2012 CY
PIT	0 CY			0 CY
TOTALS	1733 CY	116 CY	2605 CY	2012 CY

APPROXIMATE DISTURBANCE AREA: 4.6 ACRES±
 0.8% GRADE ON AN EASTERLY SLOPE
 UNGRADED ELEVATION: 4689.0'
 FINISHED ELEVATION: 4688.5'



**BEFORE DIGGING
 CALL FOR
 UTILITY LINE LOCATION**

NOTE: THE EARTH QUANTITIES ON THIS DRAWING ARE ESTIMATED AND THE USE OF THIS IS AT THE RESPONSIBILITY OF THE USER.



DRG RIFFIN & ASSOCIATES, INC.
 (307) 382-6028 1414 ELK ST., ROCK SPRINGS, WY 82901

DRAWN: 3/21/11 - MMM	SCALE: 1" = 60'
REVISED: 4/29/11 - MMM	DRG JOB No. 18371
REVISED WELL NAME	EXHIBIT 2A

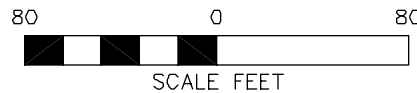
CONSTRUCTION LAYOUT DRAWING 2 OF 3
CHESAPEAKE ENERGY, LLC.
STATE 36-3-63 1H
SECTION 36, T3N, R63W
 UNGRADED ELEVATION: 4689.0'
 FINISHED ELEVATION: 4688.5'

APPROXIMATE DISTURBANCE AREA: 4.6 ACRES±
 0.8% GRADE ON AN EASTERLY SLOPE
 UNGRADED ELEVATION: 4689.0'
 FINISHED ELEVATION: 4688.5'



**BEFORE DIGGING
 CALL FOR
 UTILITY LINE LOCATION**

NOTE: THE EARTH QUANTITIES ON THIS DRAWING ARE ESTIMATED AND THE USE OF THIS IS AT THE RESPONSIBILITY OF THE USER.



DRIFIN & ASSOCIATES, INC.
 1414 ELK ST., ROCK SPRINGS, WY 82901

(307) 382-6028

DRAWN: 3/21/11 - MMM

SCALE: 1" = 60'

REVISED: 4/29/11 - MMM

DRG JOB No. 18371

REVISED WELL NAME

EXHIBIT 2B

STORMWATER BMPs

CHESAPEAKE ENERGY, LLC.
STATE 36-3-63 1H
SECTION 36, T3N, R63W

UNGRADED ELEVATION: 4689.0'
 FINISHED ELEVATION: 4688.5'