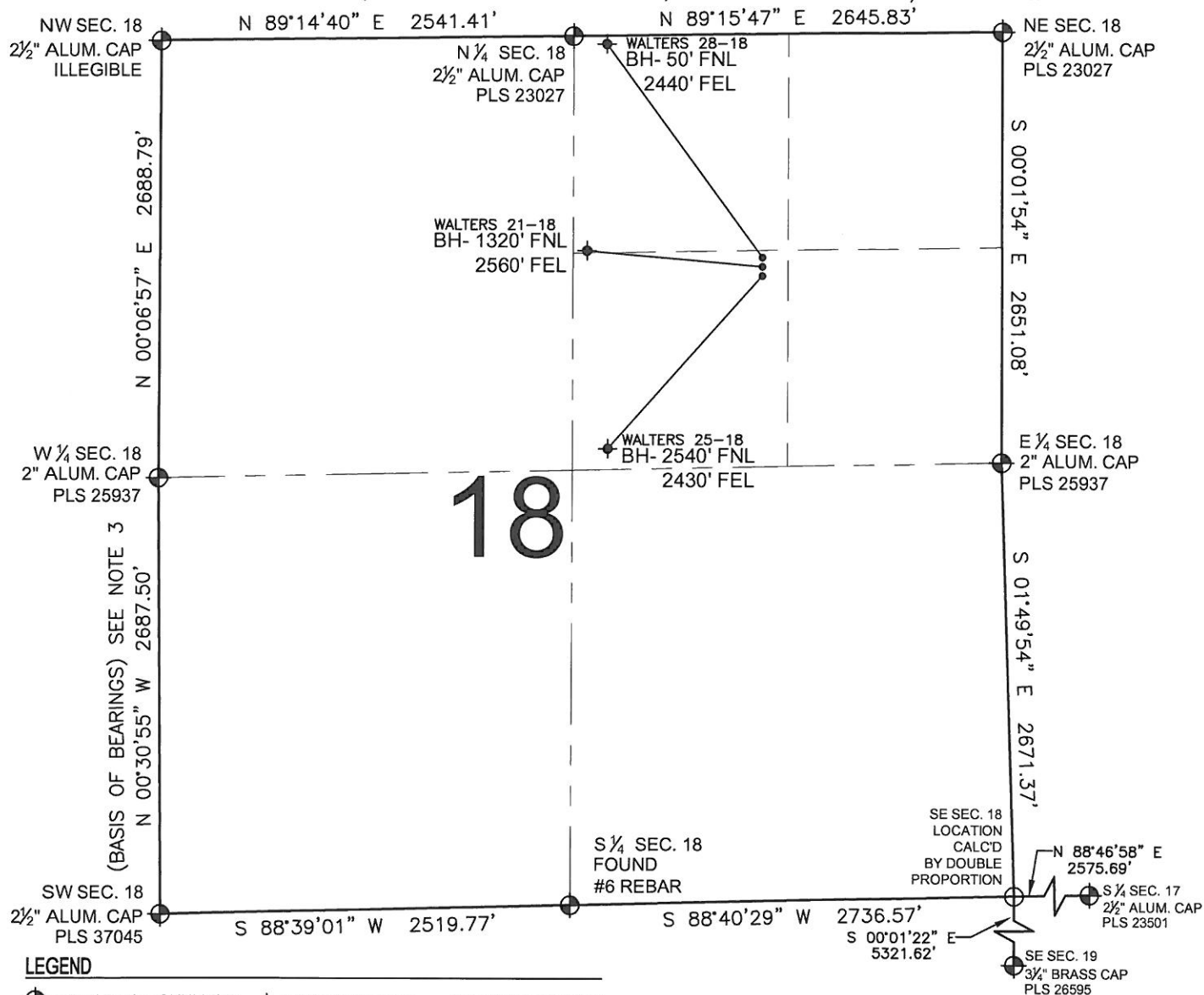


# PAD DRAWING - WALTERS 3 PAD

SECTION 18, TOWNSHIP 2 NORTH, RANGE 65 WEST, 6TH P.M.



## LEGEND

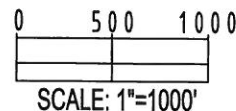
- = EXISTING MONUMENT
- ◆ = BOTTOM HOLE
- BH= BOTTOM HOLE
- = PROPOSED WELL
- ◆ = EXISTING WELL

## NOTES:

- THIS SURVEY WAS DONE BY GPS METHODS AND CONFORMS TO THE MINIMUM STANDARDS SET BY THE C.O.G.C.C., RULE NO. 215
- ELEVATIONS SHOWN AT THE WELL HEAD, AS WELL AS HORIZONTAL CONTROL, ARE BASED ON GPS-RTK VALUES DERIVED FROM DOING 2-HOUR STATIC GPS SESSIONS AND REDUCTIONS USING O.P.U.S. SOLUTIONS.  
VERTICAL = NAVD88; HORIZONTAL = NAD83/92
- THE BEARINGS SHOWN HEREON ARE BASED ON GPS OBSERVATIONS BETWEEN THE MONUMENTS SHOWN HEREON AS FOUND ON THE FIELD DATE BELOW.
- DISTANCES SHOWN ARE AT GROUND LEVEL, AS MEASURED IN THE FIELD, WITH TIES TO WELLS MEASURED AT A PERPENDICULAR TO SECTION LINES.

## NOTES:

- WALTERS 28-18 TO BE AT 1411' FNL, 1481' FEL.  
BOTTOM HOLE AT 50' FNL & 2440' FEL.  
WALTERS 21-18 TO BE AT 1421' FNL, 1481' FEL.  
BOTTOM HOLE AT 1320' FNL & 2560' FEL.  
WALTERS 25-18 TO BE AT 1431' FNL, 1480' FEL.  
BOTTOM HOLE AT 2540' FNL & 2430' FEL.



## REVISIONS

INITIAL	DATE

PREPARED BY:

**PFS**

Petroleum Field Services, LLC  
1801 W. 13th Ave.  
Denver, CO 80204



KERR-MCGEE OIL & GAS ONSHORE LP

FIELD DATE:

12-14-10

DRAWING DATE:

12-28-10

BY:

SMF

PAD NAME:

WALTERS 3 PAD

SURFACE LOCATION:

WELD COUNTY, COLORADO

SW 1/4 NE 1/4, SEC. 18, T2N, R65W