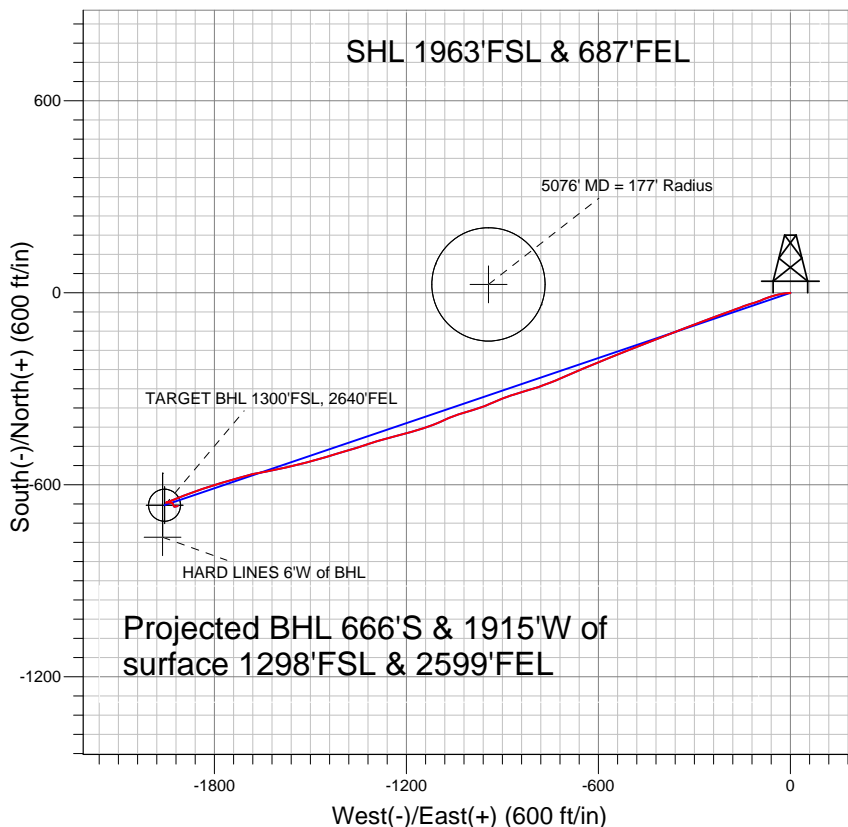


Anadarko, Weld County CO



LEGEND

- Wildflower 23-27, Wellbore #1, Plan #1 (2-04-11) V0
- Wellbore #1
- Survey #1

Final Survey Plot

Projected Final Survey -
8630'MD & 8208'TVD @ 2027' VS
1.3 deg Inc 65.0 deg AZ

Project: SEC.27-T2N-R68W
Site: Wildflower 9-27 Pad Sec.27-T2N-R68W
Well: Wildflower 23-27
Plan: Wellbore #1



Directional

Anadarko, Weld County CO

SEC.27-T2N-R68W

Wildflower 9-27 Pad Sec.27-T2N-R68W

Wildflower 23-27

Wellbore #1

Survey: Survey #1

Standard Survey Report

14 March, 2011

Company:	Anadarko, Weld County CO	Local Co-ordinate Reference:	Well Wildflower 23-27
Project:	SEC.27-T2N-R68W	TVD Reference:	WELL @ 4985.0ft (Original Well Elev)
Site:	Wildflower 9-27 Pad Sec.27-T2N-R68W	MD Reference:	WELL @ 4985.0ft (Original Well Elev)
Well:	Wildflower 23-27	North Reference:	True
Wellbore:	Wellbore #1	Survey Calculation Method:	Minimum Curvature
Design:	Wellbore #1	Database:	Landmark

Project	SEC.27-T2N-R68W, Weld County, Colorado		
Map System:	US State Plane 1983	System Datum:	Mean Sea Level
Geo Datum:	North American Datum 1983		Using Well Reference Point
Map Zone:	Colorado Northern Zone		Using geodetic scale factor

Site	Wildflower 9-27 Pad Sec.27-T2N-R68W				
Site Position:		Northing:	1,282,487.63ft	Latitude:	40.107660
From:	Lat/Long	Easting:	3,144,830.06ft	Longitude:	-104.982213
Position Uncertainty:	0.0 ft	Slot Radius:	"	Grid Convergence:	0.33 °

Well	Wildflower 23-27					
Well Position	+N-S	0.0 ft	Northing:	1,282,487.44 ft	Latitude:	40.107660
	+E-W	0.0 ft	Easting:	3,144,800.14 ft	Longitude:	-104.982320
Position Uncertainty		0.0 ft	Wellhead Elevation:	ft	Ground Level:	4,970.0 ft

Wellbore	Wellbore #1				
Magnetics	Model Name	Sample Date	Declination (°)	Dip Angle (°)	Field Strength (nT)
	IGRF2010	2/4/2011	9.00	66.79	52,990

Design	Wellbore #1				
Audit Notes:					
Version:	1.0	Phase:	ACTUAL	Tie On Depth:	0.0
Vertical Section:	Depth From (TVD) (ft)	+N/-S (ft)	+E/-W (ft)	Direction (°)	
	0.0	0.0	0.0	251.25	

Survey Program	Date	3/14/2011			
From (ft)	To (ft)	Survey (Wellbore)	Tool Name	Description	
143.0	8,630.0	Survey #1 (Wellbore #1)	MWD	MWD - Standard	

Survey										
Measured Depth (ft)	Inclination (°)	Azimuth (°)	Vertical Depth (ft)	+N/-S (ft)	+E/-W (ft)	Vertical Section (ft)	Dogleg Rate (°/100ft)	Build Rate (°/100ft)	Turn Rate (°/100ft)	
0.0	0.00	0.00	0.0	0.0	0.0	0.0	0.00	0.00	0.00	
143.0	0.30	206.10	143.0	-0.3	-0.2	0.3	0.21	0.21	0.00	
232.0	1.20	267.40	232.0	-0.6	-1.2	1.3	1.22	1.01	68.88	
323.0	2.90	271.20	322.9	-0.6	-4.5	4.4	1.87	1.87	4.18	
416.0	4.80	261.90	415.7	-1.1	-10.7	10.4	2.14	2.04	-10.00	
507.0	7.10	263.70	506.2	-2.2	-20.0	19.7	2.54	2.53	1.98	
600.0	8.40	258.20	598.4	-4.3	-32.4	32.0	1.61	1.40	-5.91	
692.0	10.50	256.20	689.1	-7.6	-47.1	47.1	2.31	2.28	-2.17	
896.0	11.10	246.70	889.5	-19.8	-83.2	85.2	0.92	0.29	-4.66	
991.0	14.50	250.30	982.1	-27.5	-102.8	106.2	3.67	3.58	3.79	
1,086.0	17.10	252.90	1,073.5	-35.6	-127.3	132.0	2.84	2.74	2.74	
1,181.0	19.00	248.60	1,163.9	-45.3	-155.1	161.4	2.44	2.00	-4.53	
1,276.0	20.50	250.10	1,253.3	-56.6	-185.1	193.5	1.67	1.58	1.58	

Company:	Anadarko, Weld County CO	Local Co-ordinate Reference:	Well Wildflower 23-27
Project:	SEC.27-T2N-R68W	TVD Reference:	WELL @ 4985.0ft (Original Well Elev)
Site:	Wildflower 9-27 Pad Sec.27-T2N-R68W	MD Reference:	WELL @ 4985.0ft (Original Well Elev)
Well:	Wildflower 23-27	North Reference:	True
Wellbore:	Wellbore #1	Survey Calculation Method:	Minimum Curvature
Design:	Wellbore #1	Database:	Landmark

Survey

Measured Depth (ft)	Inclination (°)	Azimuth (°)	Vertical Depth (ft)	+N/-S (ft)	+E/-W (ft)	Vertical Section (ft)	Dogleg Rate (°/100ft)	Build Rate (°/100ft)	Turn Rate (°/100ft)
1,371.0	21.50	249.70	1,342.0	-68.3	-217.1	227.6	1.06	1.05	-0.42
1,466.0	24.00	249.90	1,429.6	-81.0	-251.6	264.3	2.63	2.63	0.21
1,562.0	25.00	250.40	1,516.9	-94.5	-289.0	304.1	1.06	1.04	0.52
1,657.0	25.50	247.90	1,602.9	-109.0	-326.9	344.6	1.24	0.53	-2.63
1,752.0	26.60	247.80	1,688.2	-124.7	-365.5	386.2	1.16	1.16	-0.11
1,847.0	27.60	249.60	1,772.8	-140.4	-405.8	429.4	1.36	1.05	1.89
1,942.0	27.60	249.20	1,857.0	-155.9	-447.0	473.4	0.20	0.00	-0.42
2,040.0	27.20	248.60	1,944.0	-172.1	-489.1	518.5	0.50	-0.41	-0.61
2,135.0	26.30	247.80	2,028.8	-188.0	-528.8	561.2	1.02	-0.95	-0.84
2,230.0	26.00	247.20	2,114.1	-204.0	-567.5	603.0	0.42	-0.32	-0.63
2,325.0	25.60	248.30	2,199.6	-219.7	-605.8	644.2	0.66	-0.42	1.16
2,420.0	25.30	246.70	2,285.4	-235.3	-643.5	685.0	0.79	-0.32	-1.68
2,516.0	25.30	246.90	2,372.2	-251.5	-681.2	725.9	0.09	0.00	0.21
2,611.0	22.90	246.00	2,458.9	-266.9	-716.8	764.5	2.56	-2.53	-0.95
2,706.0	23.70	249.10	2,546.2	-281.3	-751.5	802.0	1.54	0.84	3.26
2,801.0	24.30	251.80	2,632.9	-294.2	-787.9	840.6	1.32	0.63	2.84
2,896.0	23.80	252.40	2,719.7	-306.1	-824.7	879.3	0.59	-0.53	0.63
2,992.0	23.60	253.80	2,807.6	-317.3	-861.6	917.9	0.62	-0.21	1.46
3,087.0	22.30	248.40	2,895.1	-329.2	-896.7	954.9	2.60	-1.37	-5.68
3,182.0	20.30	246.30	2,983.6	-342.5	-928.5	989.3	2.25	-2.11	-2.21
3,277.0	22.50	248.60	3,072.0	-355.8	-960.5	1,023.9	2.48	2.32	2.42
3,372.0	24.00	255.80	3,159.3	-367.1	-996.2	1,061.3	3.38	1.58	7.58
3,467.0	24.10	251.10	3,246.1	-378.2	-1,033.3	1,100.0	2.02	0.11	-4.95
3,562.0	25.60	246.10	3,332.3	-392.8	-1,070.4	1,139.8	2.72	1.58	-5.26
3,658.0	23.60	247.60	3,419.6	-408.5	-1,107.1	1,179.7	2.18	-2.08	1.56
3,753.0	25.20	251.20	3,506.1	-422.3	-1,143.9	1,218.9	2.30	1.68	3.79
3,848.0	24.10	255.50	3,592.5	-433.6	-1,181.8	1,258.5	2.21	-1.16	4.53
3,943.0	24.00	254.80	3,679.2	-443.6	-1,219.2	1,297.1	0.32	-0.11	-0.74
4,038.0	25.90	254.30	3,765.3	-454.2	-1,257.8	1,337.1	2.01	2.00	-0.53
4,133.0	25.90	253.40	3,850.8	-465.8	-1,297.7	1,378.5	0.41	0.00	-0.95
4,229.0	26.40	251.00	3,937.0	-478.7	-1,338.0	1,420.8	1.22	0.52	-2.50
4,324.0	26.20	253.60	4,022.1	-491.5	-1,378.1	1,462.9	1.23	-0.21	2.74
4,419.0	27.00	253.80	4,107.1	-503.4	-1,418.9	1,505.4	0.85	0.84	0.21
4,514.0	26.30	254.00	4,192.0	-515.3	-1,459.8	1,548.0	0.74	-0.74	0.21
4,609.0	24.90	254.30	4,277.7	-526.5	-1,499.3	1,589.0	1.48	-1.47	0.32
4,704.0	24.40	255.40	4,364.0	-536.8	-1,537.6	1,628.5	0.71	-0.53	1.16
4,800.0	24.90	258.10	4,451.3	-546.0	-1,576.5	1,668.4	1.28	0.52	2.81
4,895.0	27.60	259.50	4,536.5	-554.1	-1,617.7	1,710.0	2.92	2.84	1.47
4,989.0	27.80	258.60	4,619.7	-562.4	-1,660.6	1,753.3	0.49	0.21	-0.96
5,015.7	26.94	257.43	4,643.4	-565.0	-1,672.7	1,765.5	3.79	-3.21	-4.38
5076' MD = 177' Radius									
5,084.0	24.80	254.10	4,704.9	-572.3	-1,701.5	1,795.2	3.79	-3.14	-4.88
5,179.0	24.50	254.70	4,791.2	-582.9	-1,739.7	1,834.7	0.41	-0.32	0.63
5,275.0	23.20	253.40	4,879.0	-593.6	-1,777.0	1,873.5	1.46	-1.35	-1.35
5,370.0	20.50	253.20	4,967.2	-603.7	-1,810.9	1,908.8	2.84	-2.84	-0.21
5,465.0	19.30	249.80	5,056.5	-614.0	-1,841.5	1,941.2	1.75	-1.26	-3.58
5,560.0	16.00	249.10	5,147.0	-624.1	-1,868.5	1,970.0	3.48	-3.47	-0.74
5,655.0	13.80	249.50	5,238.8	-632.7	-1,891.4	1,994.4	2.32	-2.32	0.42
5,750.0	10.40	248.90	5,331.7	-639.8	-1,910.0	2,014.3	3.58	-3.58	-0.63
5,845.0	8.90	248.90	5,425.3	-645.5	-1,924.8	2,030.2	1.58	-1.58	0.00
5,941.0	6.20	248.50	5,520.5	-650.1	-1,936.6	2,042.8	2.81	-2.81	-0.42
6,036.0	4.00	249.10	5,615.1	-653.1	-1,944.5	2,051.2	2.32	-2.32	0.63
6,131.0	1.60	248.50	5,710.0	-654.8	-1,948.8	2,055.8	2.53	-2.53	-0.63
6,226.0	0.30	222.80	5,805.0	-655.5	-1,950.2	2,057.4	1.41	-1.37	-27.05

Company:	Anadarko, Weld County CO	Local Co-ordinate Reference:	Well Wildflower 23-27
Project:	SEC.27-T2N-R68W	TVD Reference:	WELL @ 4985.0ft (Original Well Elev)
Site:	Wildflower 9-27 Pad Sec.27-T2N-R68W	MD Reference:	WELL @ 4985.0ft (Original Well Elev)
Well:	Wildflower 23-27	North Reference:	True
Wellbore:	Wellbore #1	Survey Calculation Method:	Minimum Curvature
Design:	Wellbore #1	Database:	Landmark

Survey

Measured Depth (ft)	Inclination (°)	Azimuth (°)	Vertical Depth (ft)	+N/-S (ft)	+E/-W (ft)	Vertical Section (ft)	Dogleg Rate (°/100ft)	Build Rate (°/100ft)	Turn Rate (°/100ft)
6,321.0	0.10	72.30	5,900.0	-655.6	-1,950.3	2,057.5	0.41	-0.21	-158.42
6,421.0	0.22	36.42	6,000.0	-655.5	-1,950.1	2,057.3	0.15	0.12	-35.88
TARGET BHL 1300'FSL, 2640'FEL									
6,480.0	0.30	29.80	6,059.0	-655.2	-1,949.9	2,057.1	0.15	0.14	-11.22
6,575.0	0.30	52.90	6,154.0	-654.9	-1,949.6	2,056.7	0.13	0.00	24.32
6,670.0	0.80	89.30	6,249.0	-654.7	-1,948.8	2,055.8	0.62	0.53	38.32
6,766.0	0.90	88.50	6,345.0	-654.7	-1,947.3	2,054.4	0.10	0.10	-0.83
6,924.0	1.20	97.70	6,502.9	-654.9	-1,944.5	2,051.8	0.22	0.19	5.82
6,988.0	1.50	89.10	6,566.9	-654.9	-1,943.0	2,050.4	0.56	0.47	-13.44
7,083.0	1.60	91.80	6,661.9	-655.0	-1,940.4	2,047.9	0.13	0.11	2.84
7,178.0	1.80	105.40	6,756.8	-655.4	-1,937.6	2,045.5	0.47	0.21	14.32
7,273.0	1.80	111.10	6,851.8	-656.3	-1,934.8	2,043.1	0.19	0.00	6.00
7,368.0	1.40	93.30	6,946.8	-656.9	-1,932.2	2,040.9	0.67	-0.42	-18.74
7,463.0	0.70	142.10	7,041.7	-657.5	-1,930.7	2,039.6	1.13	-0.74	51.37
7,559.0	1.40	150.50	7,137.7	-658.9	-1,929.8	2,039.2	0.74	0.73	8.75
7,654.0	1.90	159.50	7,232.7	-661.4	-1,928.7	2,038.9	0.59	0.53	9.47
7,749.0	1.10	157.50	7,327.7	-663.8	-1,927.8	2,038.8	0.84	-0.84	-2.11
7,796.1	1.14	151.14	7,374.7	-664.6	-1,927.4	2,038.7	0.28	0.09	-13.52
TARGET CIRCLE 1300'FSL & 2640'FEL									
7,844.0	1.20	145.20	7,422.6	-665.4	-1,926.8	2,038.5	0.28	0.12	-12.39
7,940.0	1.80	150.80	7,518.6	-667.6	-1,925.5	2,037.9	0.64	0.63	5.83
8,034.0	0.50	69.90	7,612.6	-668.7	-1,924.4	2,037.2	1.90	-1.38	-86.06
8,130.0	0.90	78.00	7,708.6	-668.4	-1,923.3	2,036.1	0.43	0.42	8.44
8,225.0	0.70	64.50	7,803.6	-668.0	-1,922.0	2,034.8	0.29	-0.21	-14.21
8,321.0	0.70	79.60	7,899.6	-667.6	-1,920.9	2,033.6	0.19	0.00	15.73
8,463.0	1.40	75.90	8,041.5	-667.1	-1,918.4	2,031.0	0.50	0.49	-2.61
8,580.0	1.30	65.00	8,158.5	-666.1	-1,915.8	2,028.3	0.24	-0.09	-9.32
8,630.0	1.30	65.00	8,208.5	-665.7	-1,914.8	2,027.1	0.00	0.00	0.00
HARD LINES 6'W of BHL									

Checked By: _____ Approved By: _____ Date: _____