

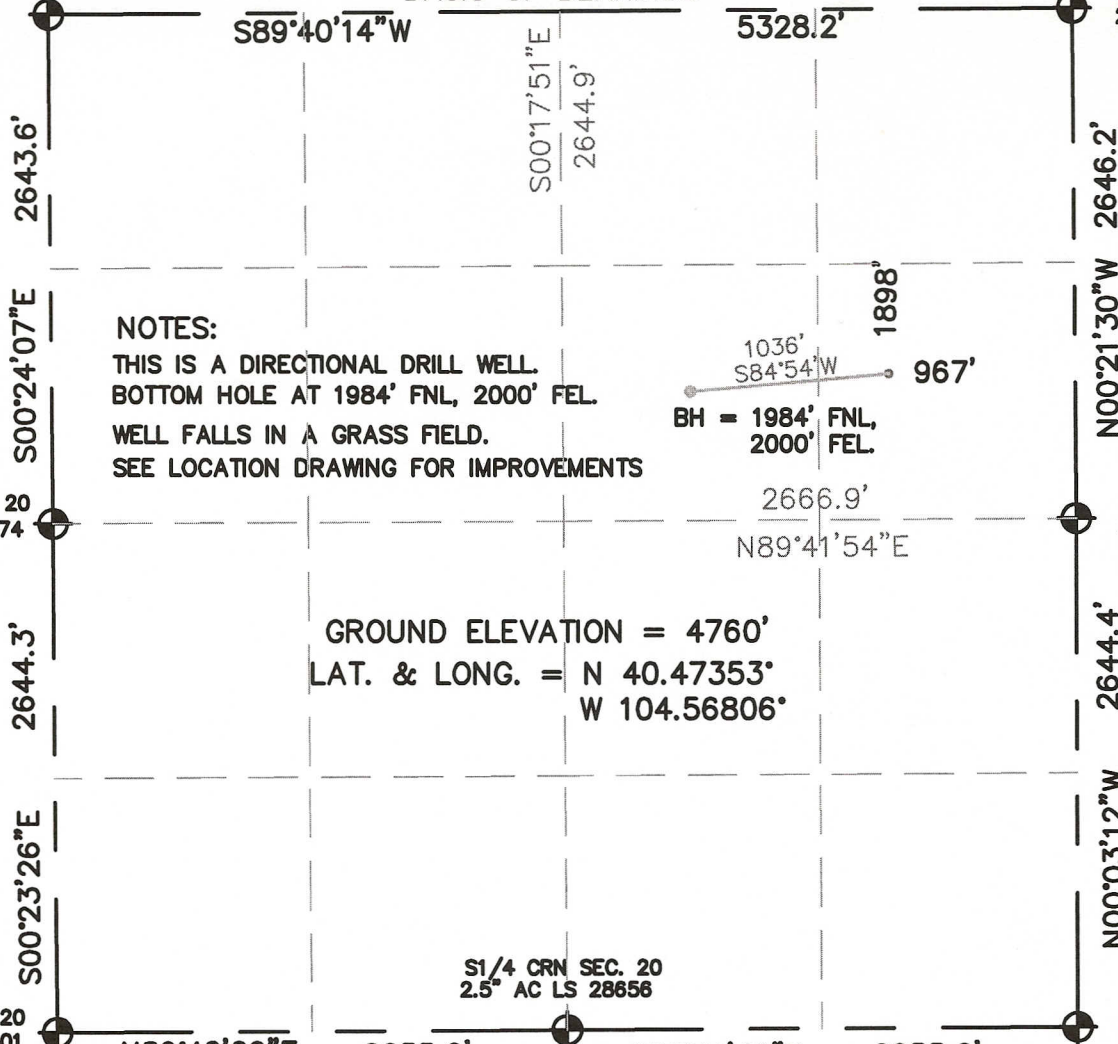
# WELL LOCATION CERTIFICATE

SECTION 20, TOWNSHIP 6 NORTH, RANGE 64 WEST, 6TH P.M.

NW CRN SEC. 20  
3.25" AC LS 7242

BASIS OF BEARINGS

NE CRN SEC. 20  
2.5" AC LS 12374



## NOTES:

THIS IS A DIRECTIONAL DRILL WELL.  
 BOTTOM HOLE AT 1984' FNL, 2000' FEL.  
 WELL FALLS IN A GRASS FIELD.  
 SEE LOCATION DRAWING FOR IMPROVEMENTS

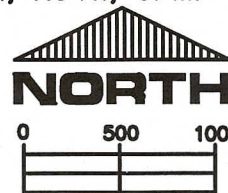
GROUND ELEVATION = 4760'  
 LAT. & LONG. = N 40.47353°  
 W 104.56806°

I HEREBY STATE TO PERTOLEUM DEV. CORP. THAT THIS LOCATION CERTIFICATE FOR THE WELL SIMMONS 32-20D IS LOCATED 1898' FNL & 967' FEL, SEC. 20, T6N, R64W, 6PM.



## LEGEND

- = FOUND MONUMENT
- = PROPOSED WELL
- = BOTTOM HOLE



SCALE 1" = 1000'

ELEVATION SOURCE = USGS 7.5' QUAD.MAP CONTOURS  
 NGVD 1929 DATUM.

LAT. & LONG. ARE DIFFERENTIALLY CORRECTED (NAD'83)  
 USING (DGPS) WITH (PDOP) VALUES LESS THAN SIX (6).

SHOWN DISTANCES ARE FIELD MEASURED - EXTERIOR SECTION LINES  
 ARE DRAWN TO SCALE (BEST APPROX. OR FOUND MONUMENT ).

DISTANCES TO WELL SHOWN PERPENDICULAR  
 TO SECTION LINES.

THOMAS G. CARLSON, PLS 24657  
 HORSESHOE SURVEYING, LLC

THIS IS NOT A MONUMENTED BOUNDARY SURVEY, IT IS ONLY A  
 DRAWING INTENDED TO DEPICT THE WELL LOCATION TO SECTION LINES.

PREPARED BY:		WELL NAME:	
HORSESHOE SURVEYING, LLC		SIMMONS 32-20D	
DRAWING DATE:		LOCATION:	
11-11-10		WELD COUNTY, CO	
FIELD DATE:		NE1/4, SEC. 20, T6N, R64W, 6TH P.M.	
11-10-10		JOB NO.	
BY:	TGC	SHEET NO.	
CHKD:		1 OF 1	