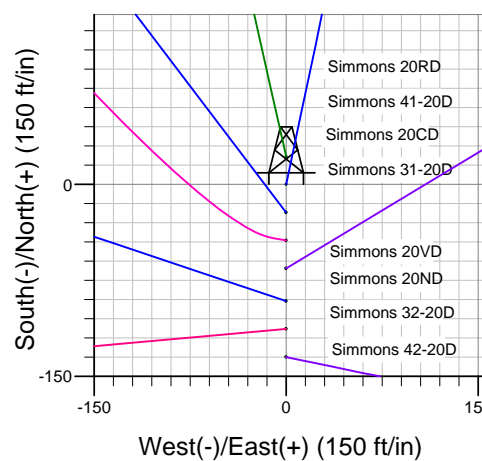
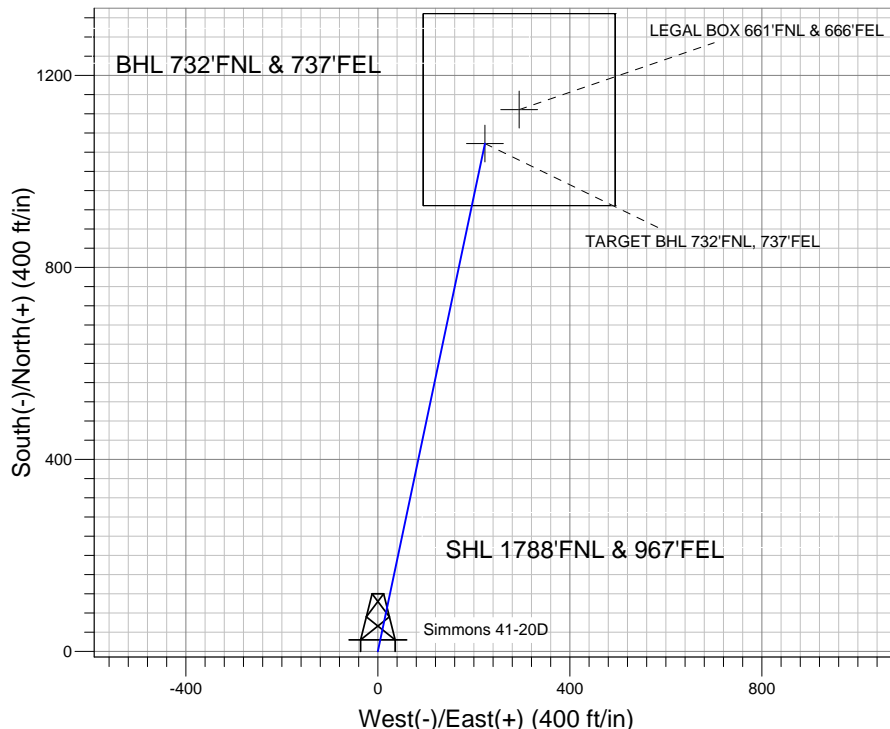
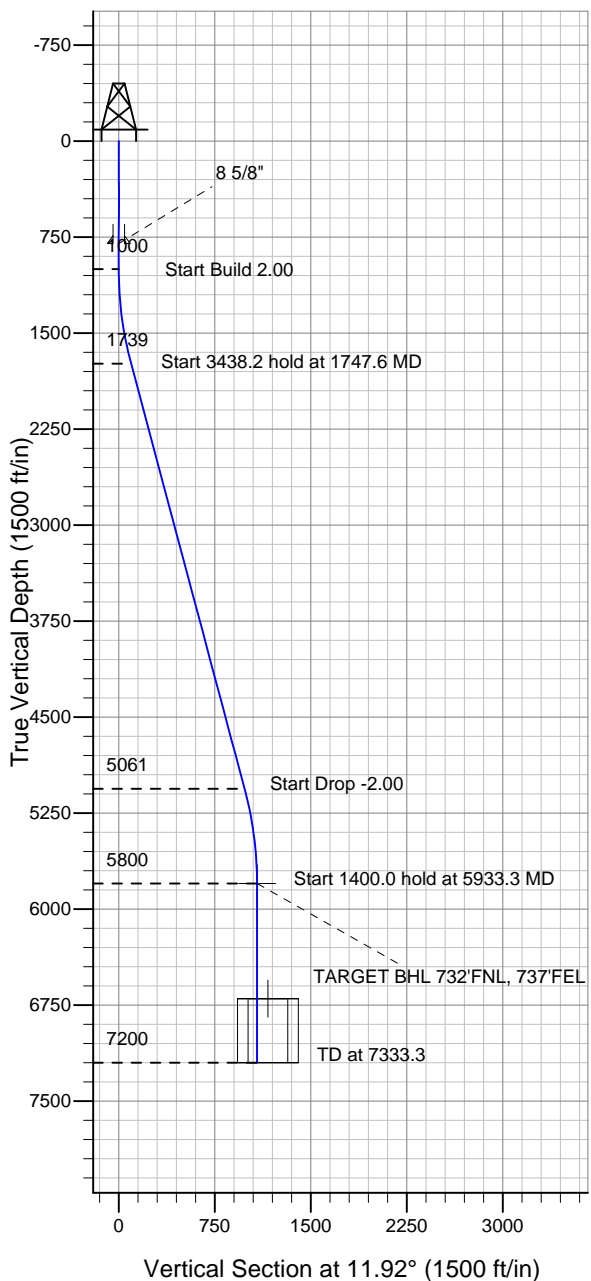


Well Name: Simmons 41-20D

Surface Location: Simmons 42-20D Pad Sec.20-T6N-R64W
 North American Datum 1983 US State Plane 1983 Colorado Northern Zone
 Ground Elevation: 4760.0
 +N/-S +E/-W Northing Easting Latitude Longitude Slot
 0.0 0.0 1416822.70 3259267.46 40° 28' 25.824 N 104° 34' 5.016 W
 Original Well Elev WELL @ 4773.0ft (Original Well Elev)

PETROLEUM DEVELOPMENT CORP Weld County CO



Simmons 42-20D Pad Sec.20-T6N-R64W
 Simmons 41-20D
 Plan #1 (1-06-11)
 9:33, January 18 2011



Azimuths to True North
 Magnetic North: 8.82°

Magnetic Field
 Strength: 53234.7snT
 Dip Angle: 67.16°
 Date: 1/18/2011
 Model: IGRF2010

WELLBORE TARGET DETAILS (LAT/LONG)

Name	TVD	+N/-S	+E/-W	Latitude	Longitude	Shape
TARGET BHL 732'FNL, 737'FEL	5800.0	1057.7	223.3	40° 28' 36.275 N	104° 34' 2.127 W	Point
LEGAL BOX 661'FNL & 666'FEL	6700.0	1128.7	294.3	40° 28' 36.977 N	104° 34' 1.208 W	Rectangle (Sides: L400.0 W400.0)

SECTION DETAILS

Sec	MD	Inc	Azi	TVD	+N/-S	+E/-W	DLeg	TFace	VSec	Target
1	0.0	0.00	0.00	0.0	0.0	0.0	0.00	0.00	0.0	
2	1000.0	0.00	0.00	1000.0	0.0	0.0	0.00	0.00	0.0	
3	1747.6	14.95	11.92	1739.1	94.9	20.0	2.00	11.92	97.0	
4	5185.7	14.95	11.92	5060.9	962.8	203.2	0.00	0.00	984.0	
5	5933.3	0.00	0.00	5800.0	1057.7	223.3	2.00	180.00	1081.0	TARGET BHL 732'FNL, 737'FEL
6	7333.3	0.00	0.00	7200.0	1057.7	223.3	0.00	0.00	1081.0	