



CEMENT BOND
GAMMA RAY
CCL

Company	KERR McGEE ROCKY MOUNTAIN CORP.	
Well	ANDERSON MEL GU #1	
Field	WATTENBERG	
County	WELD	State
State	CO	CO
Company	KERR McGEE ROCKY MOUNTAIN CORP.	Well
Well	ANDERSON MEL GU #1	Field
Field	WATTENBERG	County
County	WELD	State
State	CO	CO
Location:	API # : 05-123-08422	
NE SW		Other Services
SEC 33	TWP 2N	RGE 66W
Permanent Datum	GL	Elevation
Log Measured From	KB 10'	4976
Drilling Measured From	KB	K.B. 4986 D.F. 4985 G.L. 4976
Date	7-7-2010	
Run Number	1	
Depth Driller	8110	
Depth Logger		
Bottom Logged Interval		
Top Log Interval		
Open Hole Size	7.875	
Type Fluid	WATER	
Density / Viscosity	1.0	
Max. Recorded Temp.		
Estimated Cement Top		
Time Well Ready		
Time Logger on Bottom		
Equipment Number	4310	
Location	GREELEY	
Recorded By	K.BRABEC	
Witnessed By	L.WEBB	
Run Number	ONE	Bit
ONE	12.25	From
TWO	7.875	To
		Size
		Weight
		From
		To
Casing Record	Size	Wgt/Ft
Surface String	8.875	24#
Prot. String		
Production String	4.5	11.6#
Liner		0
		T.D.


<<< Fold Here >>>

All interpretations are opinions based on inferences from electrical or other measurements and we cannot and do not guarantee the accuracy or correctness of any interpretation, and we shall not, except in the case of gross or willful negligence on our part, be liable or responsible for any loss, costs, damages, or expenses incurred or sustained by anyone resulting from any interpretation made by any of our officers, agents or employees. These interpretations are also subject to our general terms and conditions set out in our current Price Schedule.

Comments

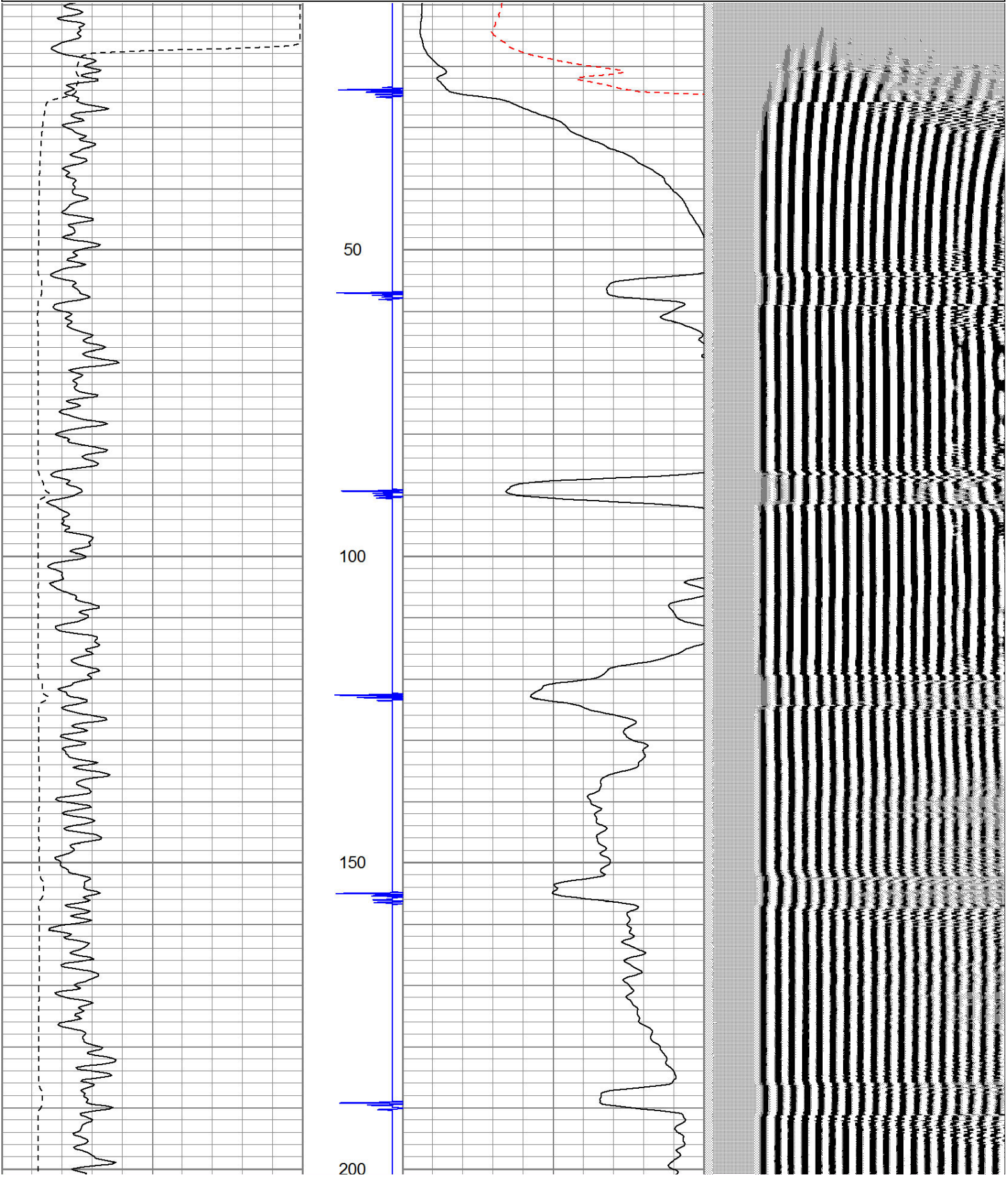
RAN CBL TO VERIFY CEMENT

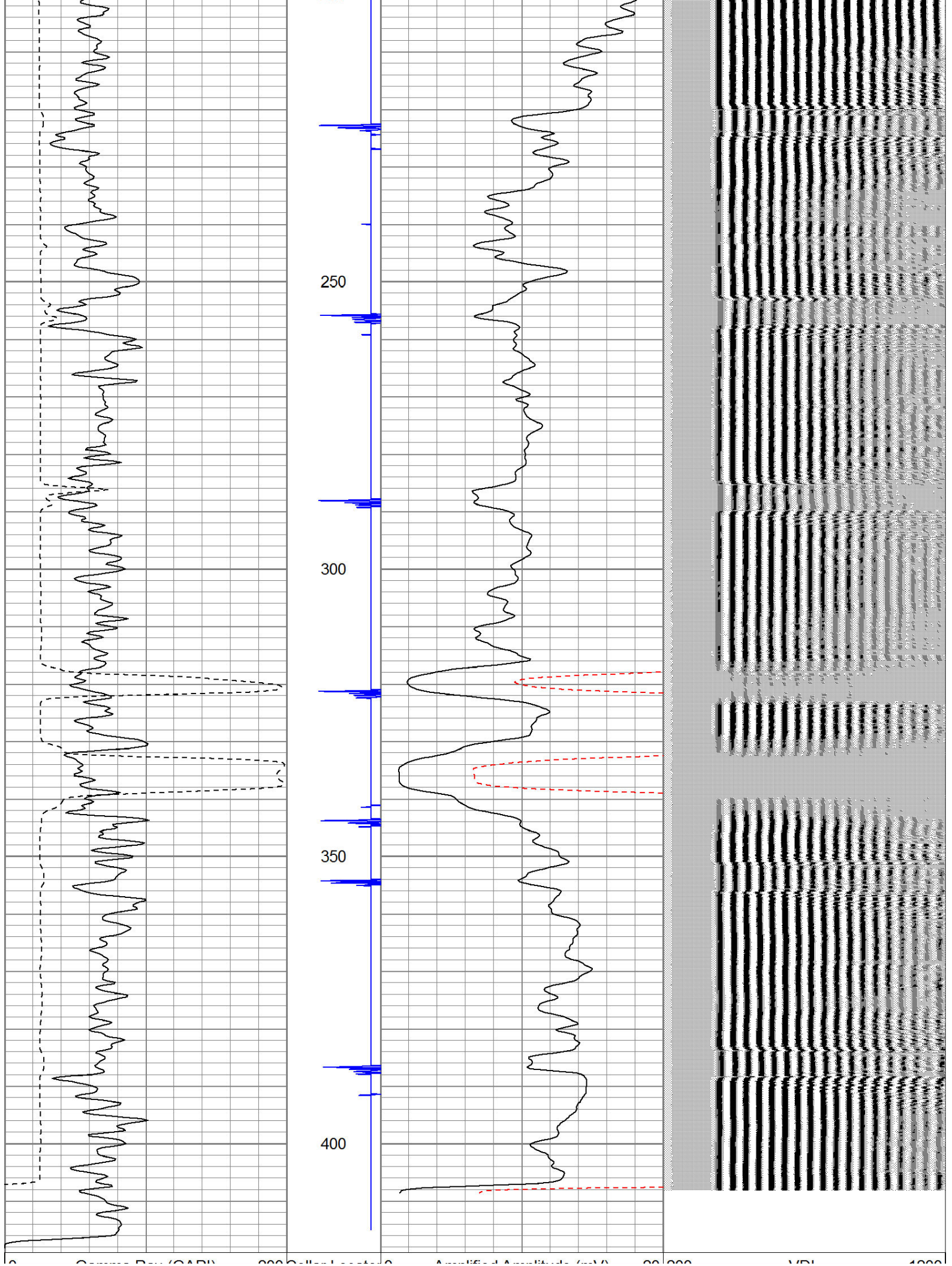
THANK YOU FOR USING IPS WIRELINE SERVICES!!!!

Sensor	Offset (ft)	Schematic	Description	Len (ft)	OD (in)	Wt (lb)
			STD-Standard (STNDRD) Standard Cable Head	1.00	1.44	10.00

				CENT-Probe (PTS_MONO)	2.88	2.75	35.00
WVF3	11.57						
WVF5	10.57			CBL-Probe (275) Probe 2.75" Dual Receiver Bond	8.92	2.75	60.00
				CENT-Probe (PT_MONO2)	2.88	2.75	35.00
CCL	3.67						
GR	2.00			GR-Probe (275) Probe 2.75" 4 Channel Pulse	4.50	2.75	30.00
Dataset: anderson mel.db: field/well/run1/pass5.7 Total Length: 20.18 ft Total Weight: 170.00 lb O.D. 2.75 in							

0	Gamma Ray (GAPI)	200	Collar Locator	0	Amplified Amplitude (mV)	20	200	VDL	1200
200	TT3 (usec)	800	9	-1	0	Amplitude (mV)	100		
200	gr (GAPI)	400							

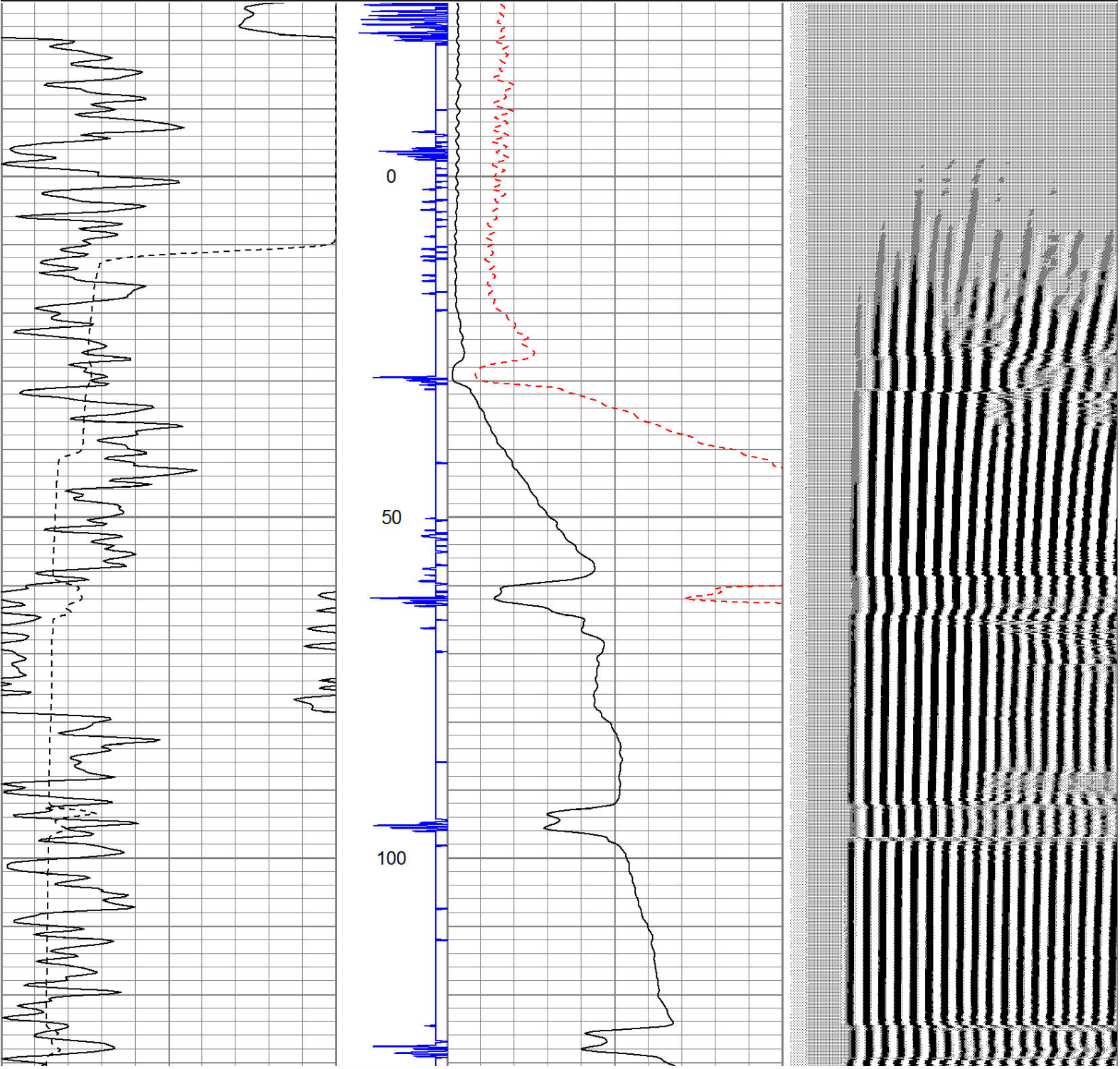


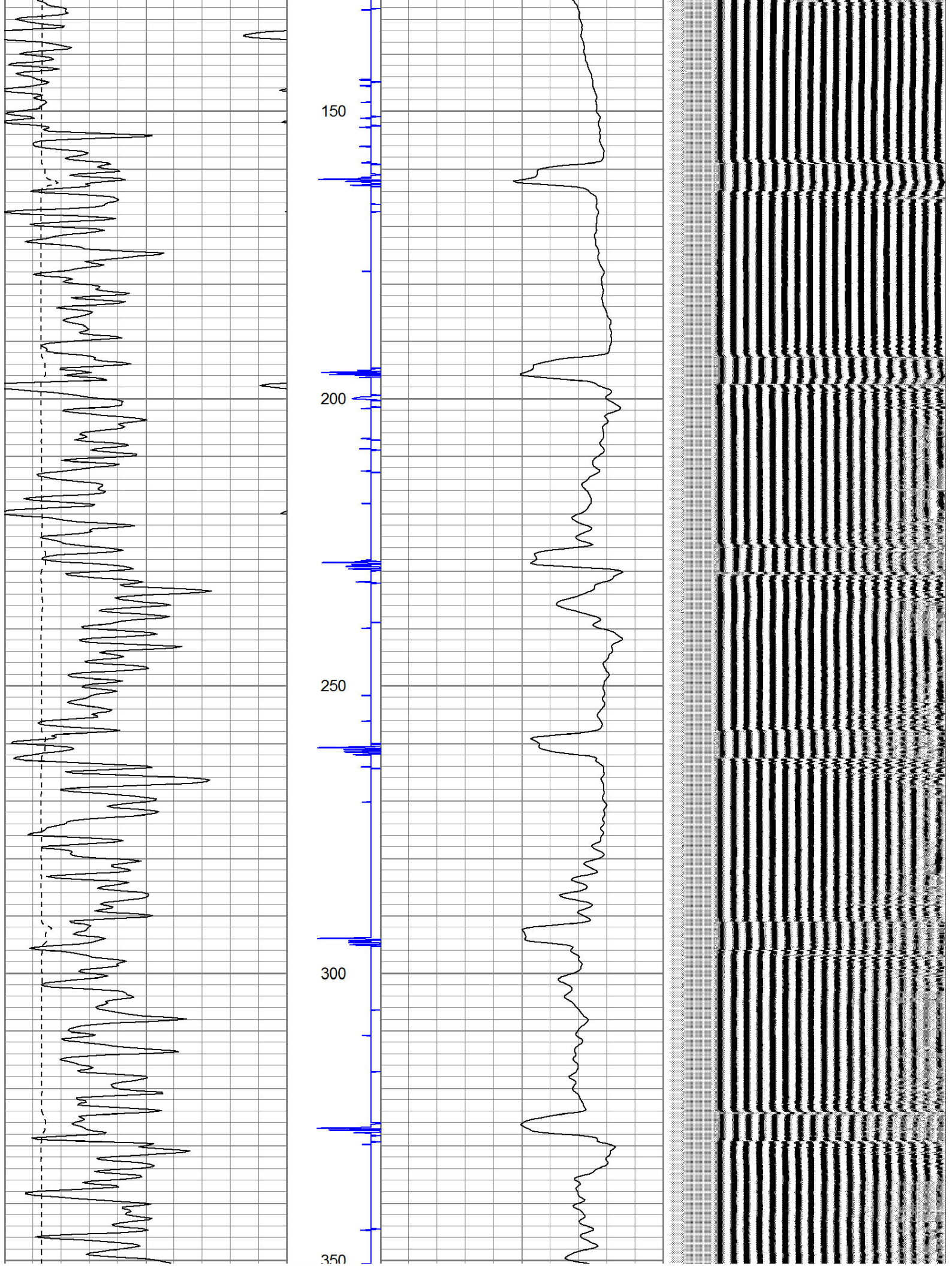


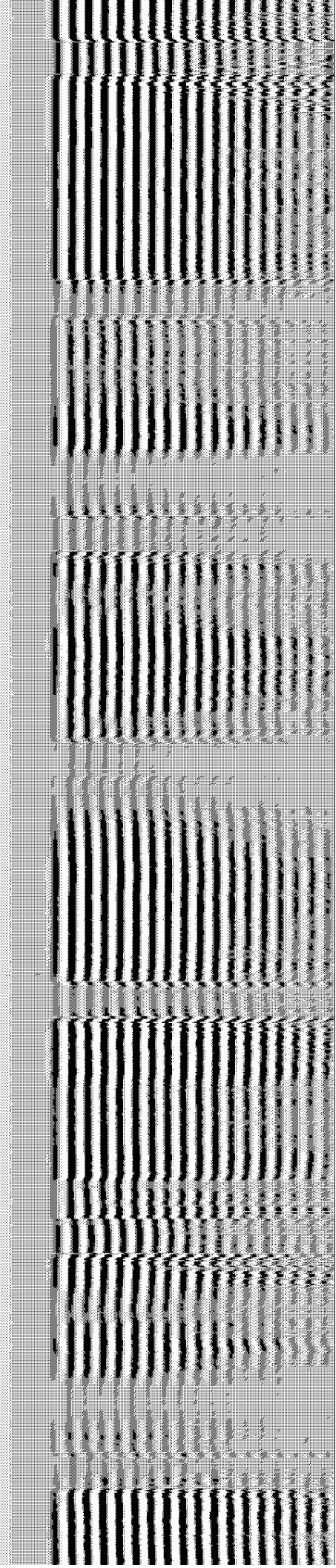
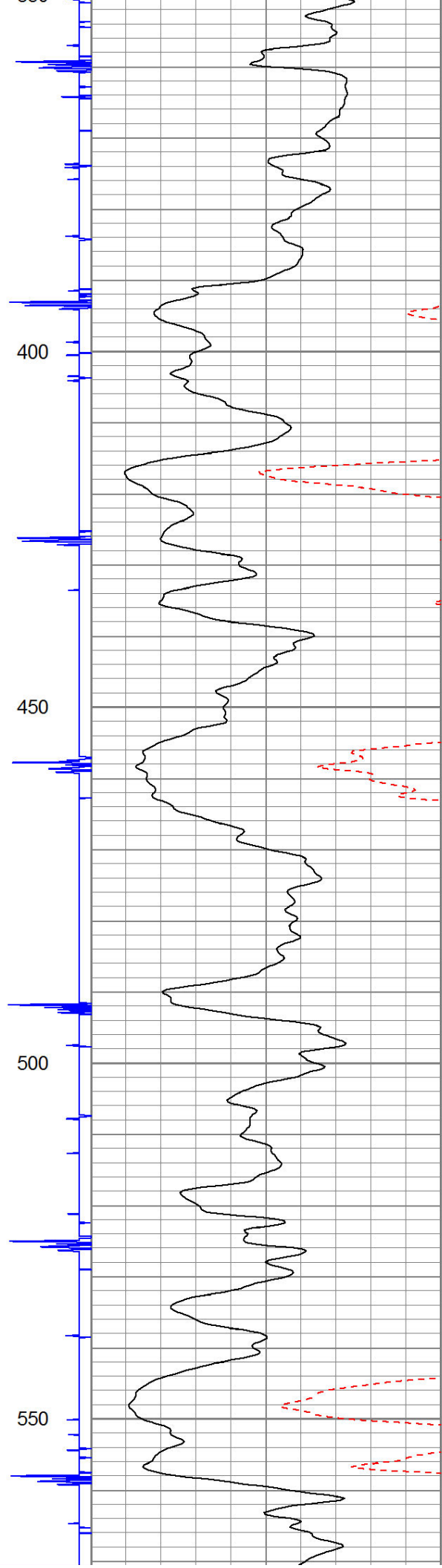
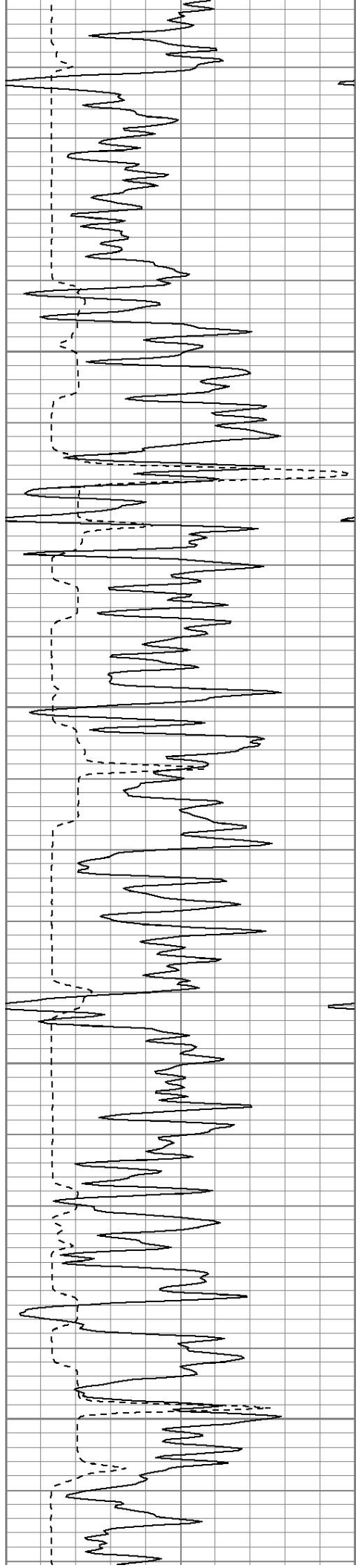
Gamma Ray (GAPI)	200	Collar Locator	0	Amplified Amplitude (mV)	20	200	VDL	1200
200	TT3 (usec)	800	9	-1	0	Amplitude (mV)	100	
200	gr (GAPI)	400						

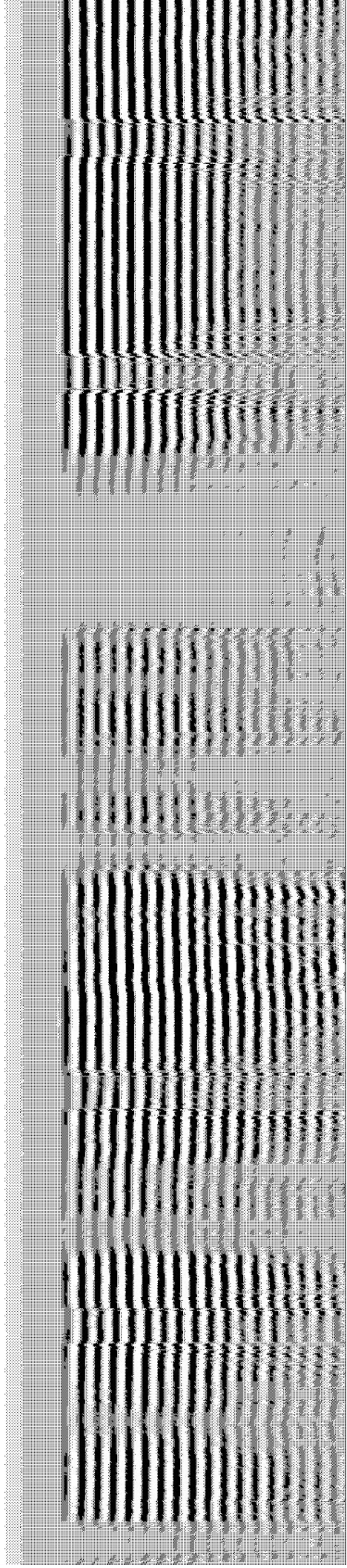
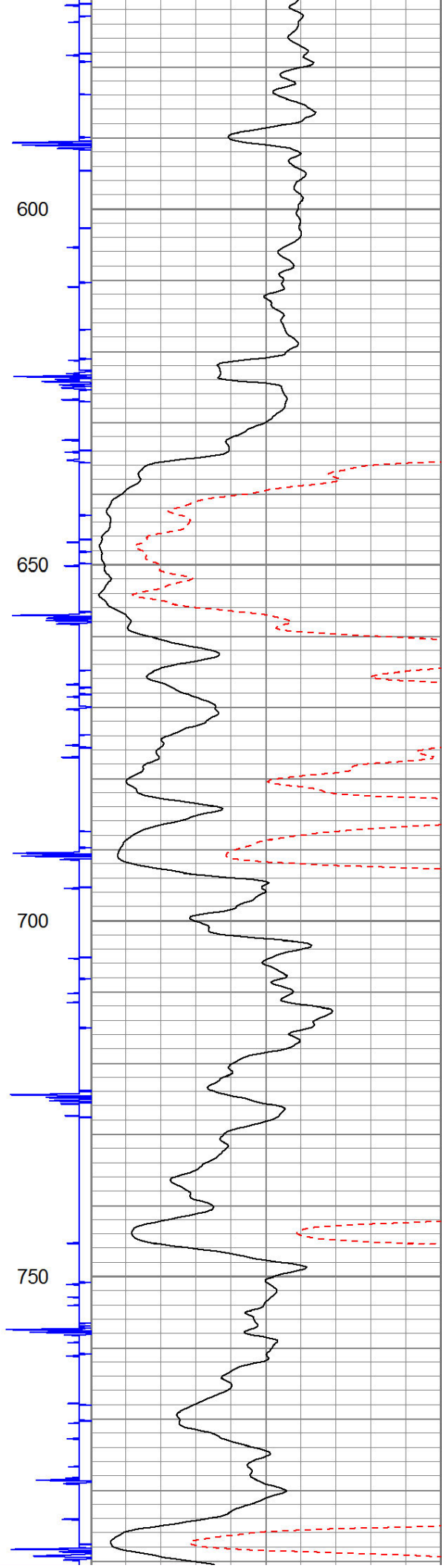
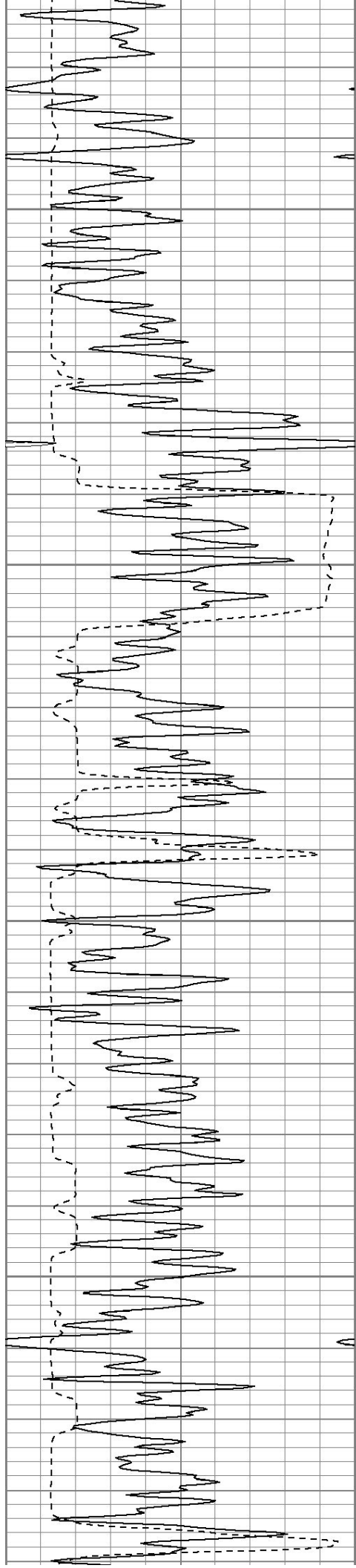
Database File:	anderson mel.db							
Dataset Pathname:	pass5.6							
Presentation Format:	ipsdrcbl							
Dataset Creation:	Wed Jul 14 20:12:35 2010 by Calc Std Casedhole 09061							
Charted by:	Depth in Feet scaled 1:240							

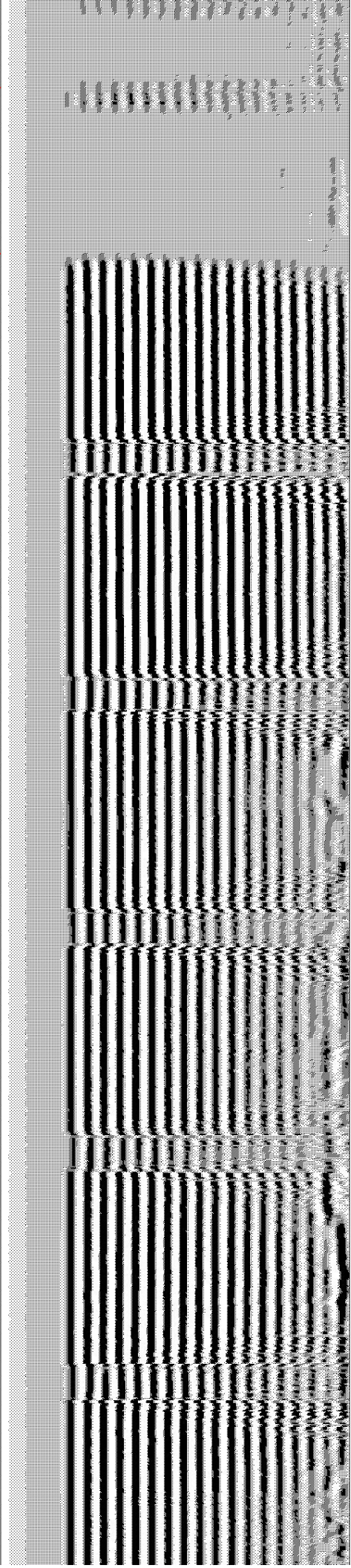
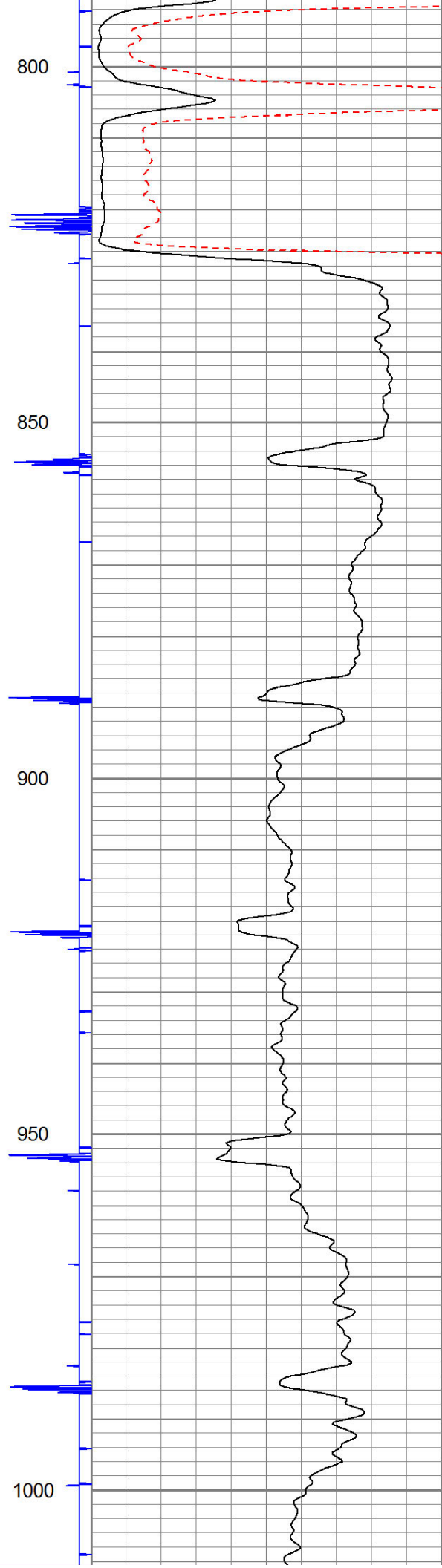
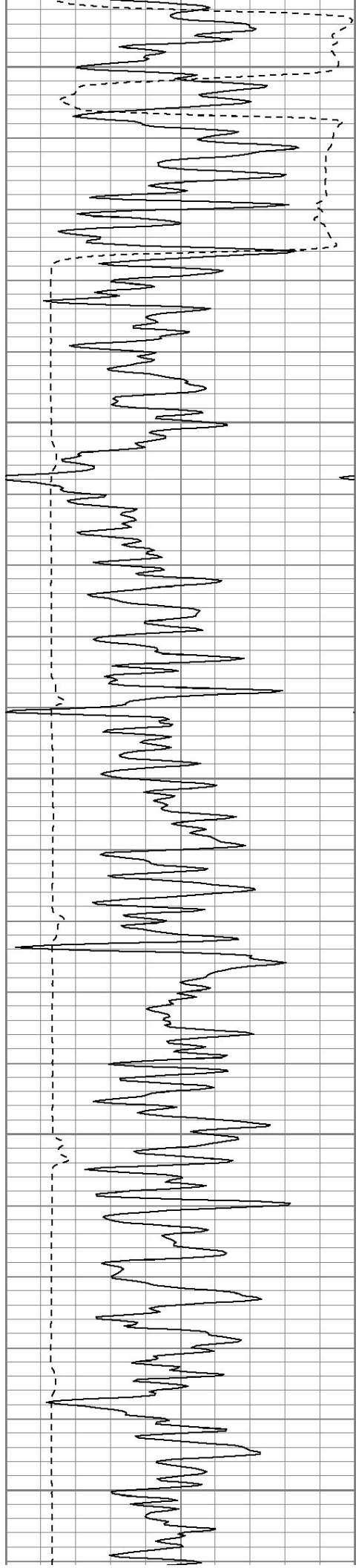
30	Gamma Ray (GAPI)	130	Collar Locator	0	Amplified Amplitude (mV)	20	200	VDL	1200
200	TT3 (usec)	800	9	-1	0	Amplitude (mV)	100		
130	gr (GAPI)	230							

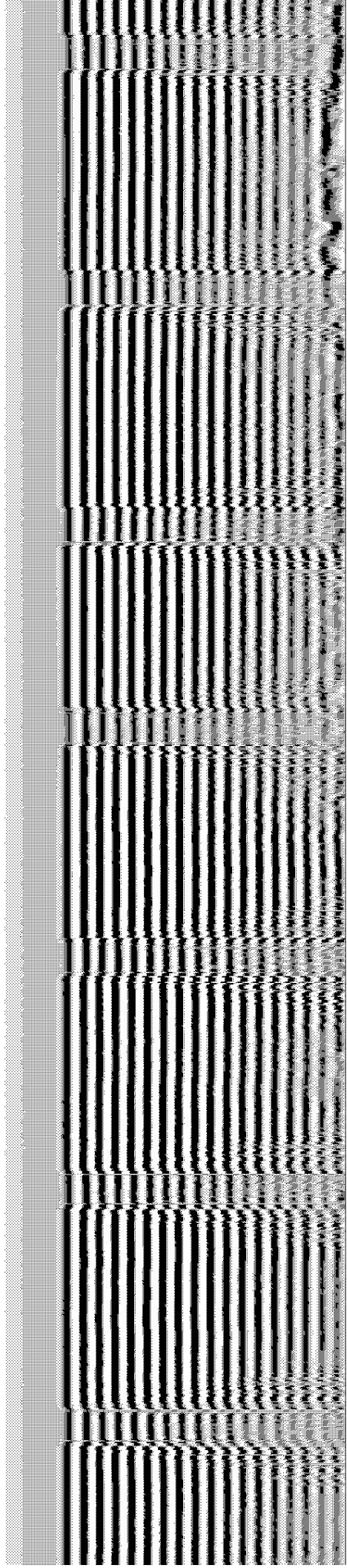
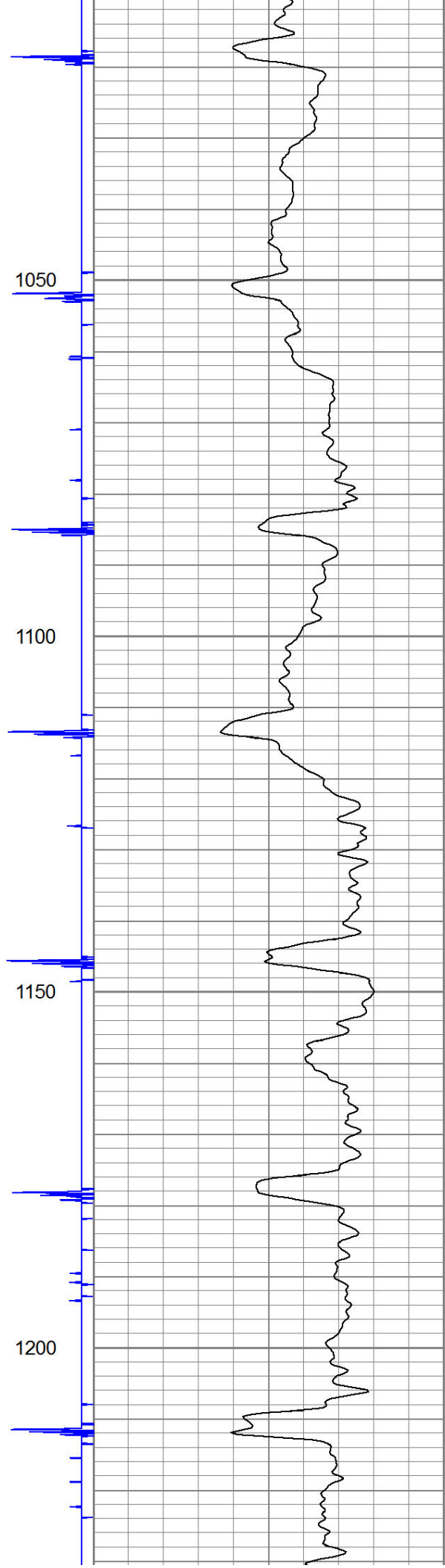
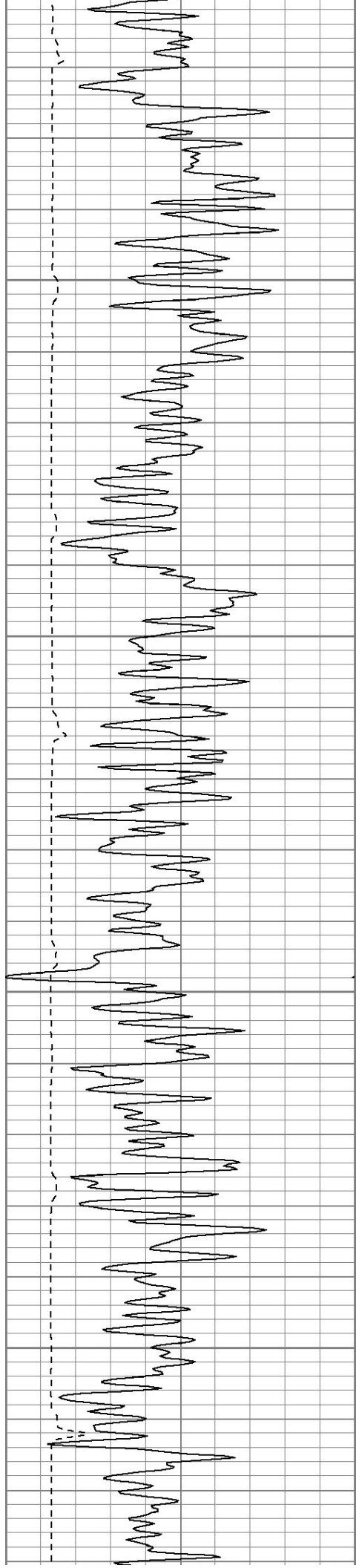


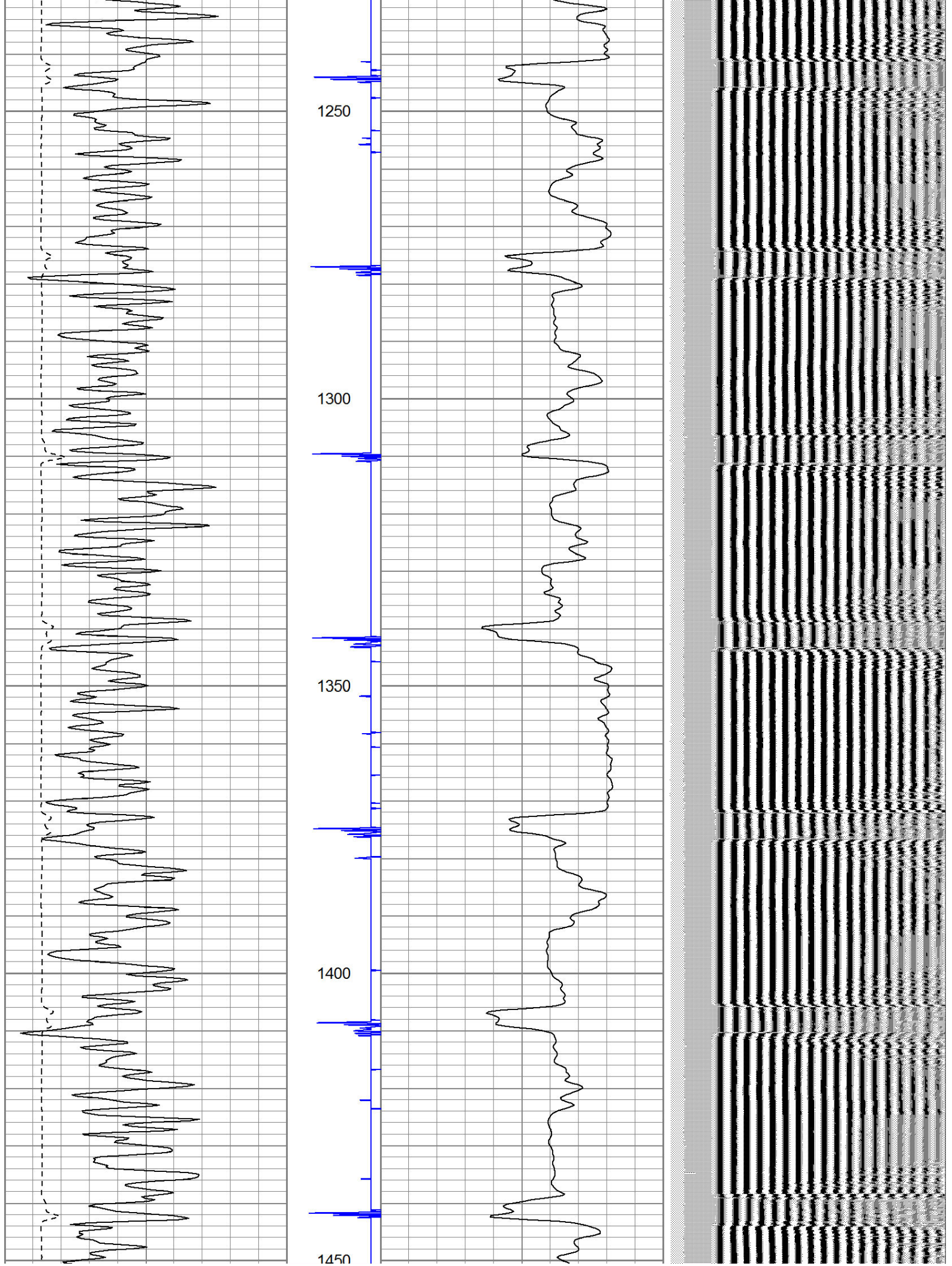


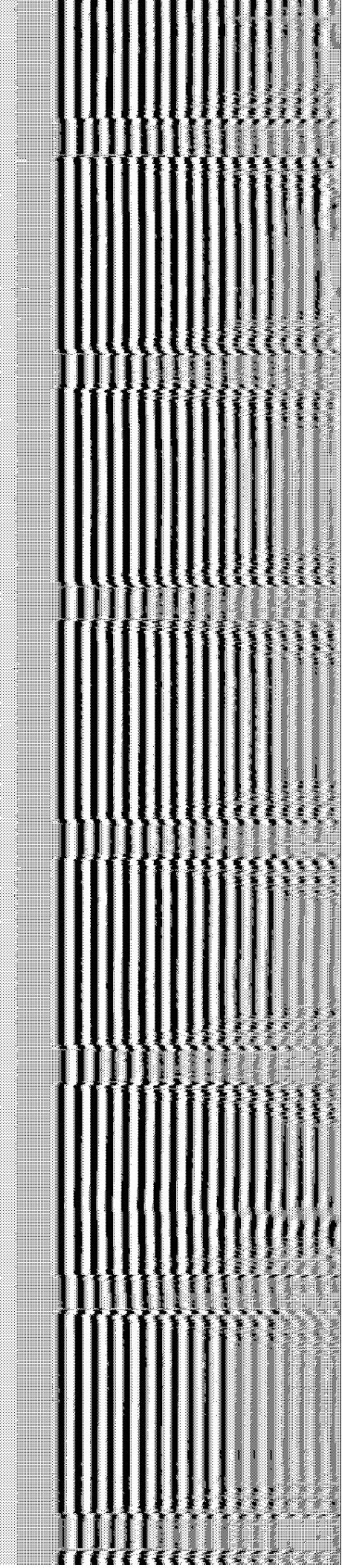
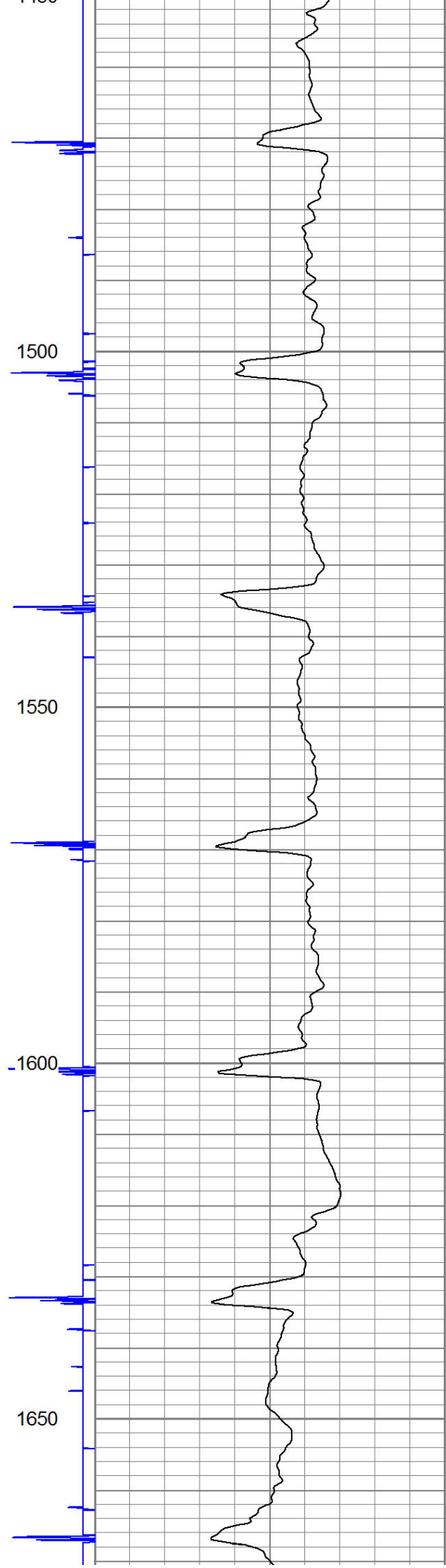
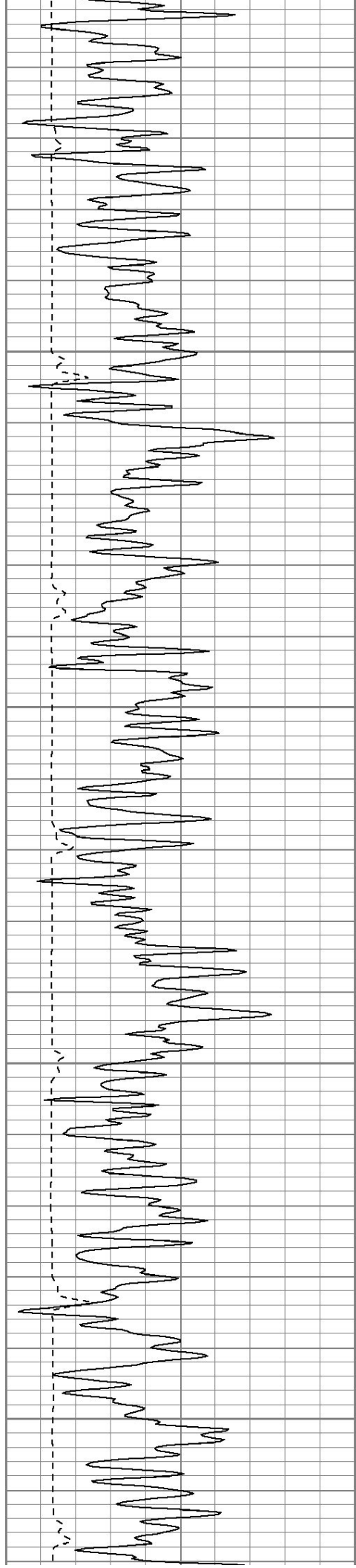


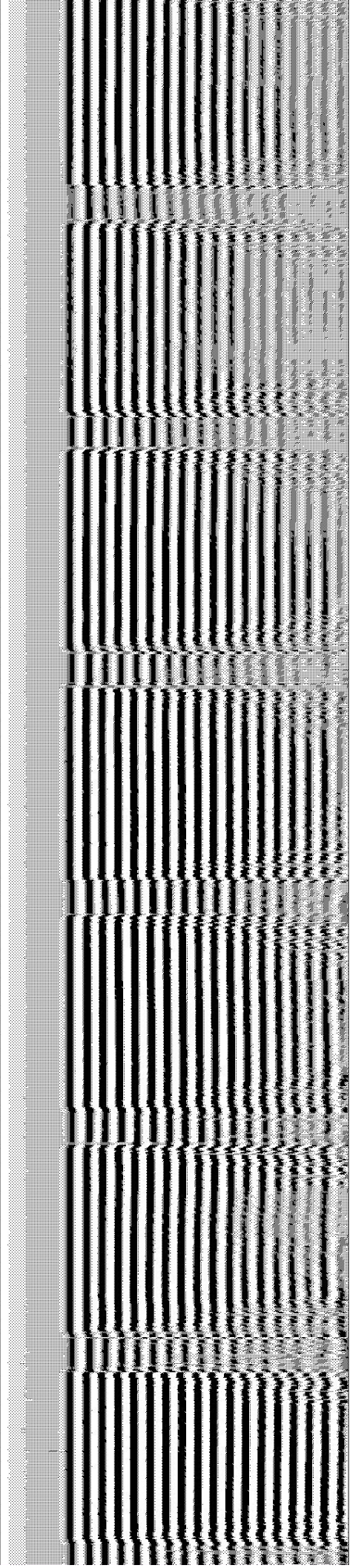
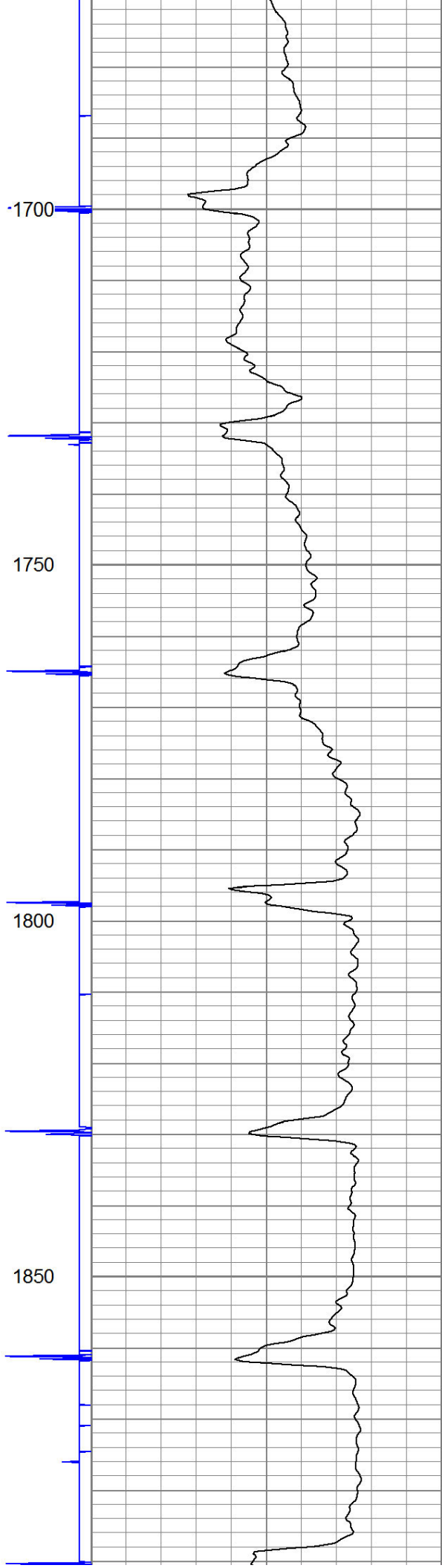
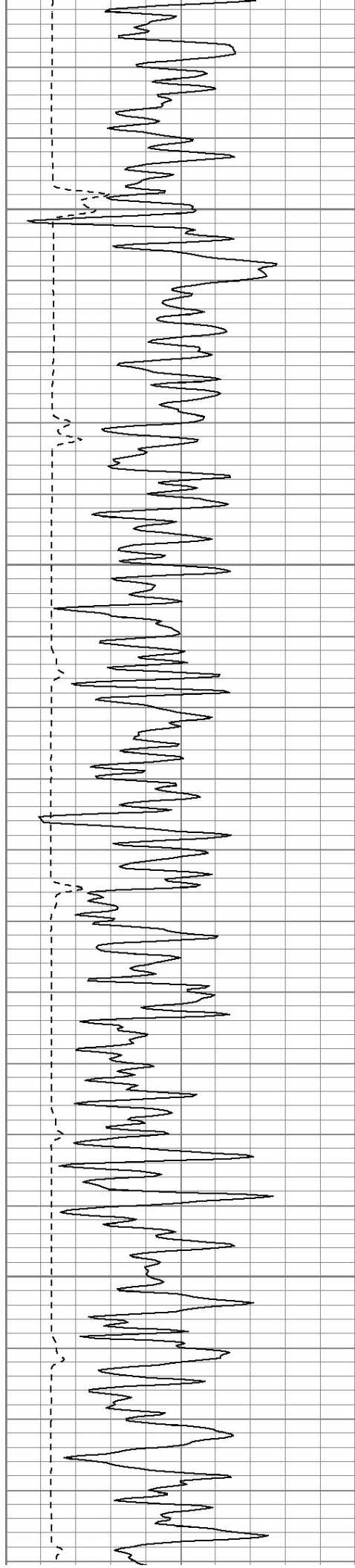


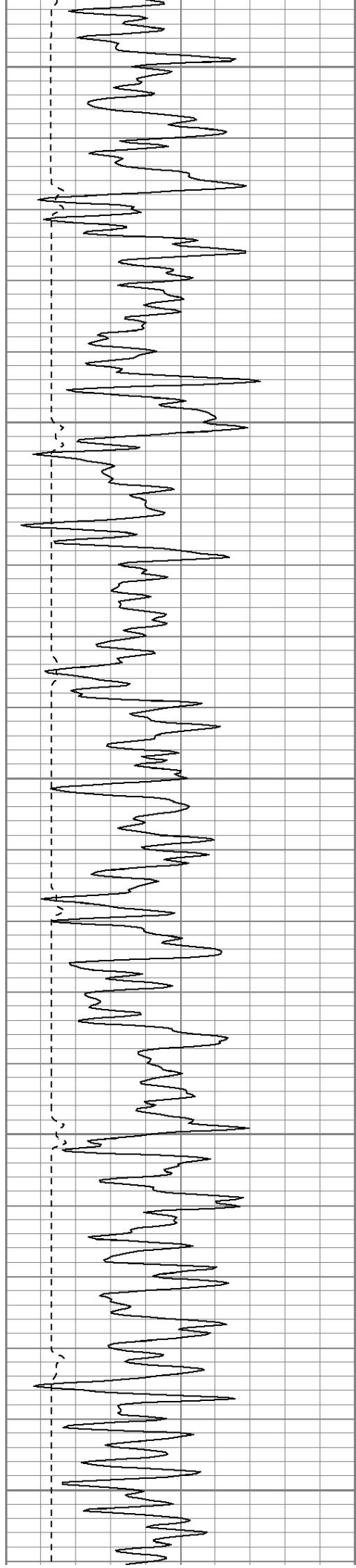












1900

1950

2000

2050

2100

