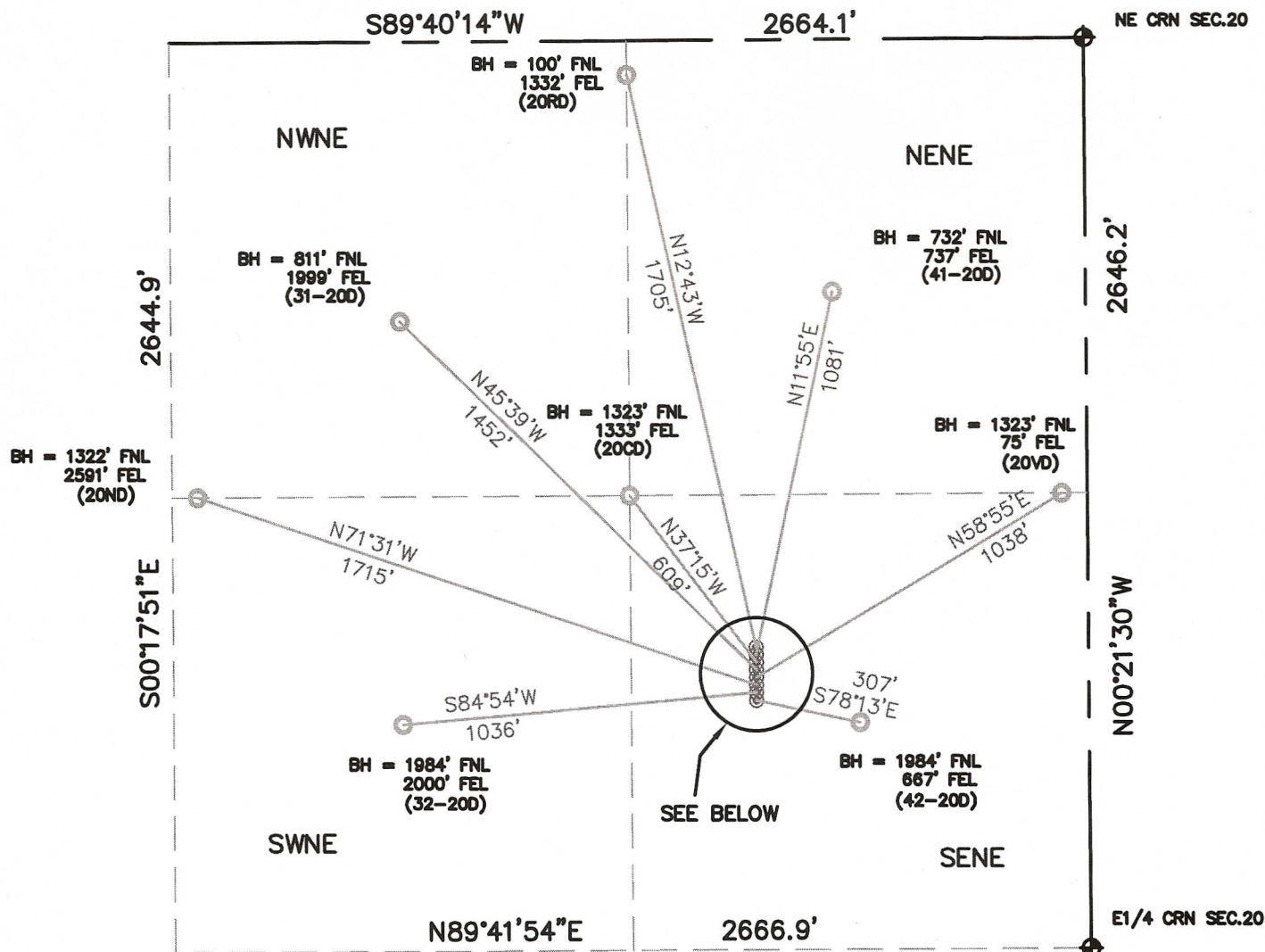


WELL PAD EXHIBIT

PART OF THE NE1/4 SECTION 20, TOWNSHIP 6 NORTH, RANGE 64 WEST, 6TH P.M.



SCALE 1" = 500'

LEGEND

- ◆ = FOUND MONUMENT
- ⊙ = PROPOSED WELL
- = BOTTOM HOLE LOCATION

FROM ABOVE

- SIMMONS 20RD, 1854' FNL, 967' FEL
- SIMMONS 41-20D, 1788' FNL, 967' FEL
- SIMMONS 20CD, 1810' FNL, 967' FEL
- SIMMONS 31-20D, 1832' FNL, 967' FEL
- SIMMONS 32-20D, 1898' FNL, 967' FEL
- SIMMONS 42-20D, 1920' FNL, 967' FEL
- SIMMONS 20ND, 1876' FNL, 967' FEL
- SIMMONS 20RD, 1766' FNL, 967' FEL

THIS IS NOT A MONUMENTED BOUNDARY SURVEY, IT IS ONLY A DRAWING INTENDED TO DEPICT THE WELL PAD & DIRECTIONAL DRILLS TO SECTION LINES.

PREPARED BY:

HORSESHOE SURVEYING, LLC
PO BOX 150458
LAKEWOOD, CO 80215
(720)872-0196

DRAWING DATE:

11-11-10

FIELD DATE:

11-10-10

BY:

TGC

WELL NAME:

SIMMONS (8 WELL PAD)

20RD, 41-20D, 20CD, 31-20D, 20VD, 20ND, 32-20D, 42-20D

LOCATION:

WELD COUNTY, CO
NE1/4, SEC. 20, T6N, R64W, 6TH P.M.