

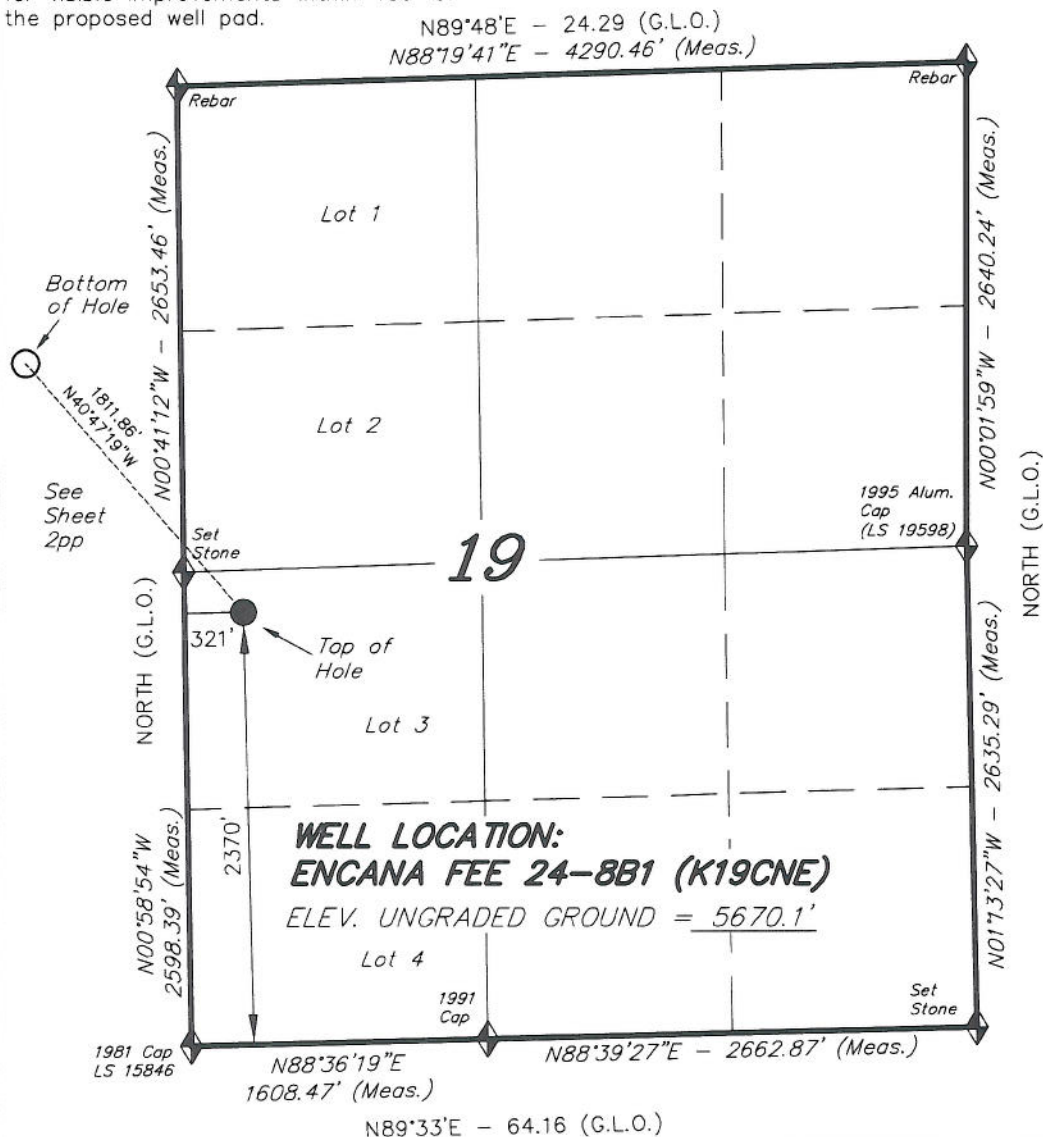
**IMPROVEMENT NOTE:**

See addendum to legal plat (sheet 2s)  
for visible improvements within 400' of  
the proposed well pad.

**T6S, R92W, 6th P.M.**

**ENCANA OIL & GAS (USA) INC**

WELL LOCATION, ENCANA FEE 24-8B1  
(K19CNE), LOCATED AS SHOWN IN LOT  
3 OF SECTION 19, T6S, R92W, 6th P.M.  
GARFIELD COUNTY, COLORADO.



**NOTES:**

1. Well footages are measured at right angles to the Section Lines.
2. Bearings are based on Global Positioning Satellite observations.
3. G.P.S. Operator:  
C.D. SLAUGH, (PDOP) = 2.4



THIS IS TO CERTIFY THAT THE ABOVE PLAT WAS  
PREPARED FROM FIELD NOTES OF ACTUAL SURVEYS  
MADE BY ME OR UNDER MY SUPERVISION. THE LOCATION  
HAS BEEN STAKED ON THE GROUND AS SHOWN ON THE  
PLAT, AND THAT THE SAME ARE TRUE AND CORRECT  
TO THE BEST OF MY KNOWLEDGE AND BELIEF.

*[Signature]* # 30125  
REGISTERED LAND SURVEYOR  
REGISTRATION No. 30125  
STATE OF COLORADO

**TRI STATE LAND SURVEYING & CONSULTING**  
180 NORTH VERNAL AVE. - VERNAL, UTAH 84078  
(435) 781-2501

DATE SURVEYED: 11-08-10	SURVEYED BY: C.D.S.	SHEET 2p OF 11
DATE DRAWN: 12-23-10	DRAWN BY: L.C.S.	
REVISED: L.C.S. 02-24-11	SCALE: 1" = 1000'	

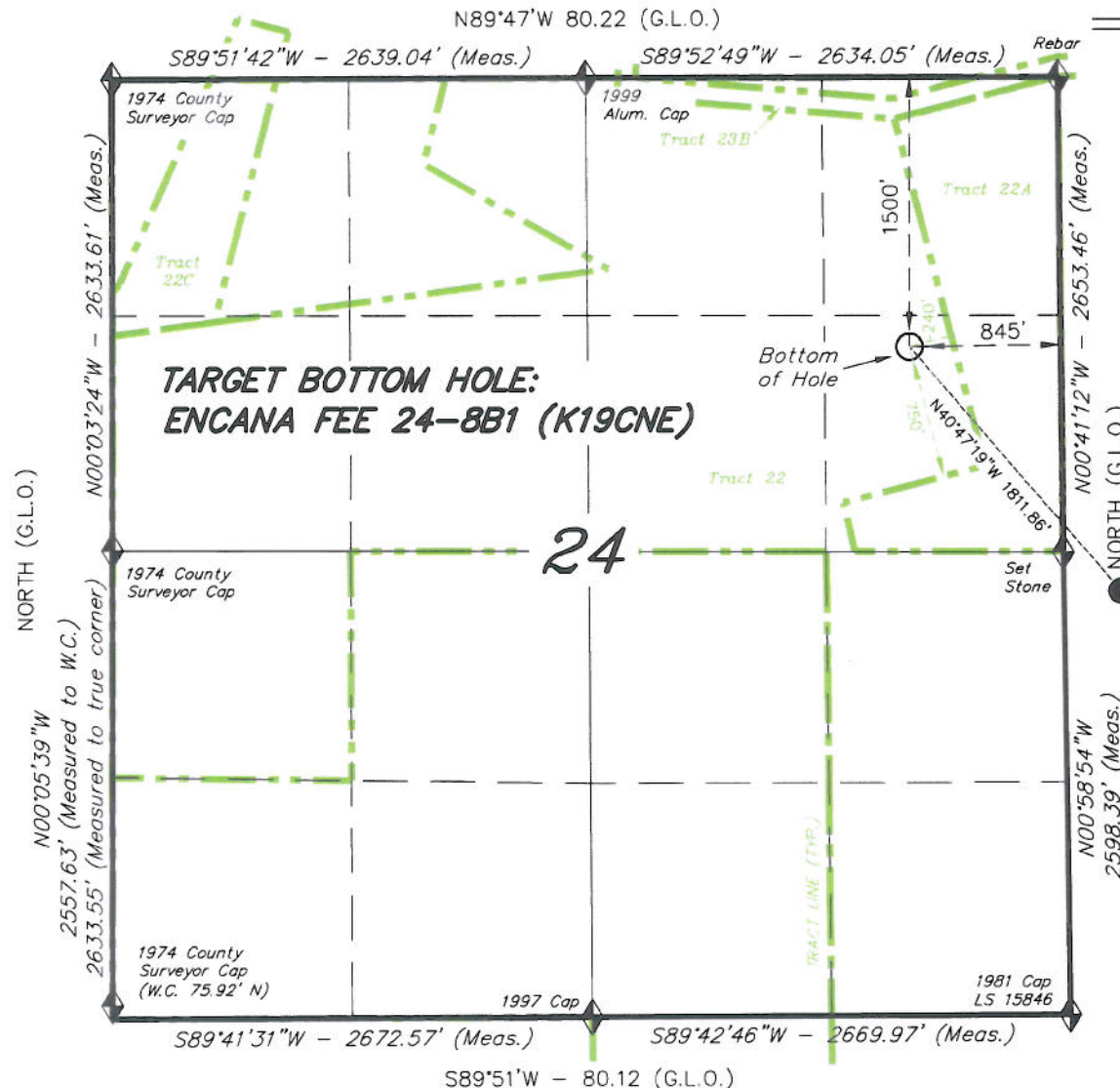
◆ = SECTION CORNERS LOCATED  
Basis of elevation is the Rifle 2 Triangulation  
Station. 39°31'53.80" N Lat. & 107°47'07.78" W  
Long. (NAD 83). Elevation = 5323.1' (NAVD88).

NAD 83 (SURFACE LOCATION)	
LATITUDE =	39°30'40.75" (39.511319)
LONGITUDE =	107°42'49.67" (107.713796)

**T6S, R93W, 6th P.M.**

**ENCANA OIL & GAS (USA) INC**

TARGET BOTTOM HOLE, ENCANA FEE 24-8B1 (K19CNE), LOCATED AS SHOWN IN THE SE 1/4 NE 1/4 OF SECTION 24, T6S, R93W, 6th P.M. GARFIELD COUNTY, COLORADO.



**NOTES:**

1. Well footages are measured at right angles to the Section Lines.
2. Bearings are based on Global Positioning Satellite observations.

THIS IS TO CERTIFY THAT THE ABOVE PLAT WAS PREPARED FROM FIELD NOTES OF ACTUAL SURVEYS MADE BY ME OR UNDER MY SUPERVISION. THE LOCATION HAS BEEN STAKED ON THE GROUND AS SHOWN ON THE PLAT, AND THAT THE SAME ARE TRUE AND CORRECT TO THE BEST OF MY KNOWLEDGE AND BELIEF.

*[Signature]*  
# 30125  
REGISTERED LAND SURVEYOR  
REGISTRATION NO. 30125  
STATE OF COLORADO  
JUL 24/11

**TRI STATE LAND SURVEYING & CONSULTING**  
180 NORTH VERNAL AVE. - VERNAL, UTAH 84078  
(435) 781-2501

DATE SURVEYED: 11-08-10	SURVEYED BY: C.D.S.	<b>SHEET 2pp OF 11</b>
DATE DRAWN: 12-23-10	DRAWN BY: L.C.S.	
REVISED: L.C.S. 02-24-11	SCALE: 1" = 1000'	

◆ = SECTION CORNERS LOCATED

Basis of elevation is the Rifle 2 Triangulation Station. 39°31'53.80" N Lat. & 107°47'07.78" W Long. (NAD 83). Elevation = 5323.1' (NAVD88).