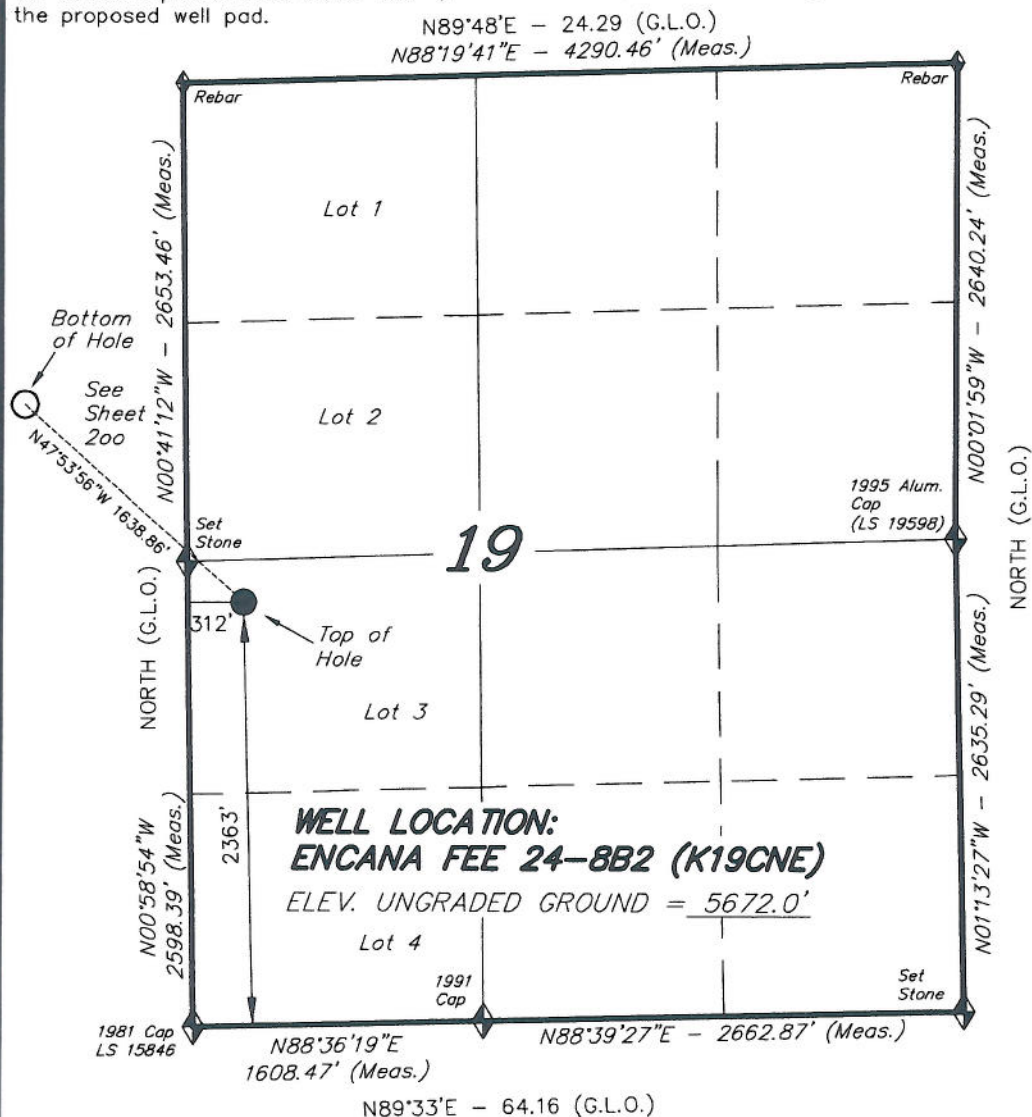



See addendum to legal plat (sheet 2s)
for visible improvements within 400' of
the proposed well pad.

T6S, R92W, 6th P.M.

ENCANA OIL & GAS (USA) INC

WELL LOCATION, ENCANA FEE 24-8B2
(K19CNE), LOCATED AS SHOWN IN LOT
3 OF SECTION 19, T6S, R92W, 6th P.M.
GARFIELD COUNTY, COLORADO.



 = SECTION CORNERS LOCATED

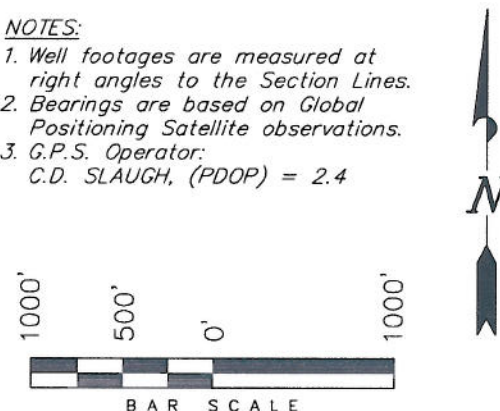
Basis of elevation is the Rifle 2 Triangulation Station. 39°31'53.80" N Lat. & 107°47'07.78" W Long. (NAD 83). Elevation = 5323.1' (NAVD88).

NAD 83 (SURFACE LOCATION)

LATITUDE = 39°30'40.68"
(39.511300)

LONGITUDE = 107°42'49.78"
(107.713829)

1. Well footages are measured at right angles to the Section Lines.
2. Bearings are based on Global Positioning Satellite observations.
3. G.P.S. Operator:
C.D. SLAUGH, (PDOP) = 2.4



THIS IS TO CERTIFY THAT THE ABOVE PLAT WAS
PREPARED FROM FIELD NOTES OF ~~ACTUAL~~ SURVEYS
MADE BY ME OR UNDER MY SUPERVISION, THE LOCATION
HAS BEEN STAKED ON THE GROUND, AS SHOWN ON THE
PLAT, AND THAT THE SAME ARE TRUE AND CORRECT
TO THE BEST OF MY KNOWLEDGE AND BELIEF.

REGISTERED LAND SURVEYOR
REGISTRATION No. 359125
STATE OF COLORADO

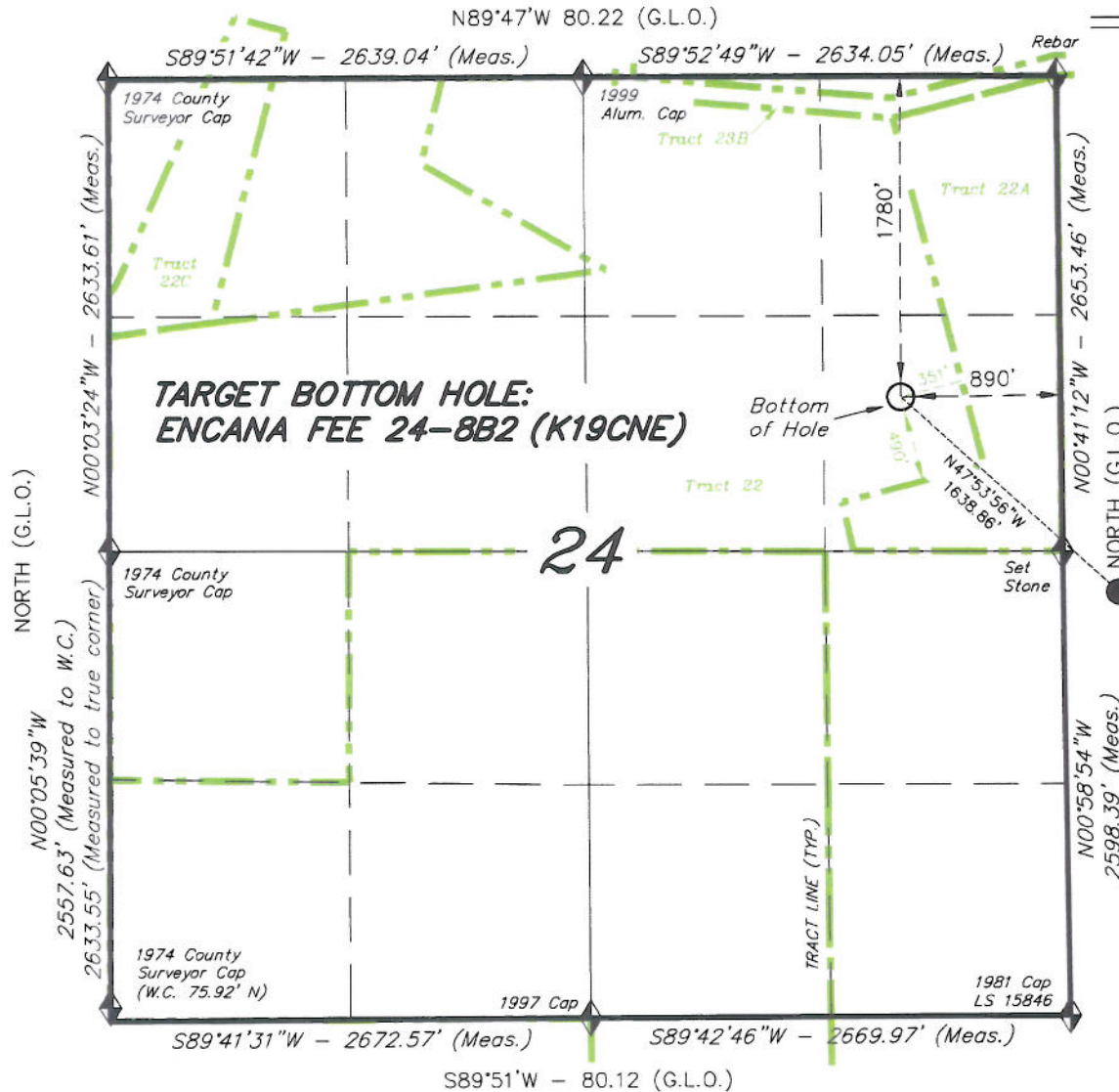
TRI STATE LAND SURVEYING & CONSULTING

180 NORTH VERNAL AVE. - VERNAL, UTAH 84078
(435) 781-2501

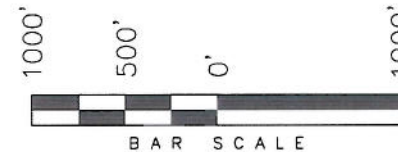
| | | |
|-----------------------------|---------------------|-----------------------------|
| DATE SURVEYED: 11-08-10 | SURVEYED BY: C.D.S. | SHEET 20 OF 11 |
| DATE DRAWN: 12-23-10 | DRAWN BY: L.C.S. | |
| REVISED: L.C.S. 02-24-11 | SCALE: 1" = 1000' | |

T6S, R93W, 6th P.M.

ENCANA OIL & GAS (USA) INC



TARGET BOTTOM HOLE, ENCANA FEE 24-8B2 (K19CNE), LOCATED AS SHOWN IN THE SE 1/4 NE 1/4 OF SECTION 24, T6S, R93W, 6th P.M. GARFIELD COUNTY, COLORADO.



NOTES:

1. Well footages are measured at right angles to the Section Lines.
2. Bearings are based on Global Positioning Satellite observations.

Top of See Hole

Sheet 20

THIS IS TO CERTIFY THAT THE ABOVE PLAT WAS PREPARED FROM FIELD NOTES OF SURVEYS MADE BY ME OR UNDER MY SUPERVISION. THE LOCATION HAS BEEN STAKED ON THE GROUND AS SHOWN ON THE PLAT, AND THAT THE SAME ARE TRUE AND CORRECT TO THE BEST OF MY KNOWLEDGE AND BELIEF.

Stanley L. Curtis # 30125
 REGISTERED LAND SURVEYOR
 REGISTRATION No. 30125
 STATE OF COLORADO

◆ = SECTION CORNERS LOCATED

Basis of elevation is the Rifle 2 Triangulation Station. 39°31'53.80" N Lat. & 107°47'07.78" W Long. (NAD 83). Elevation = 5323.1' (NAVD88).

TRI STATE LAND SURVEYING & CONSULTING
 180 NORTH VERNAL AVE. - VERNAL, UTAH 84078
 (435) 781-2501

| | | |
|-----------------------------|---------------------|--------------------------------|
| DATE SURVEYED: 11-08-10 | SURVEYED BY: C.D.S. | SHEET 200 OF 11 |
| DATE DRAWN: 12-23-10 | DRAWN BY: L.C.S. | |
| REVISED: L.C.S. 02-24-11 | SCALE: 1" = 1000' | |