

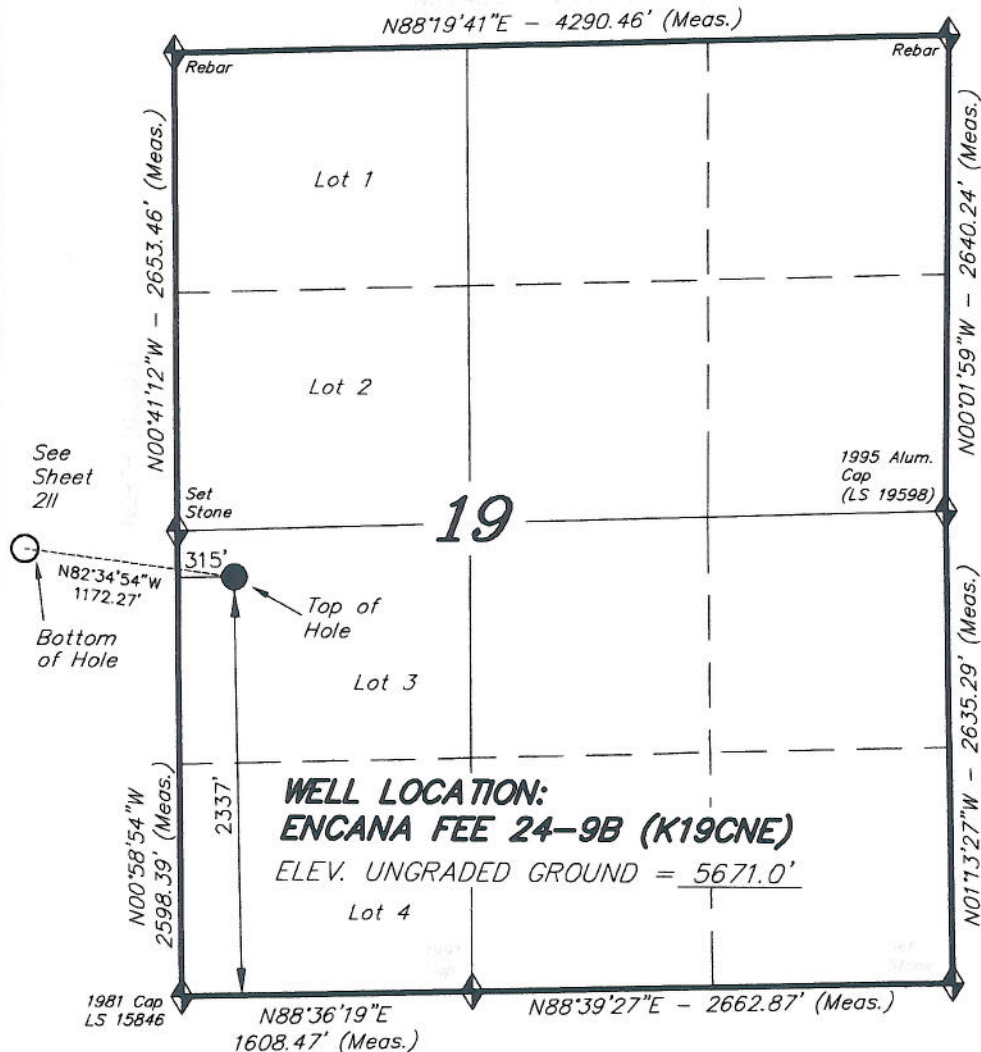
IMPROVEMENT NOTE:

See addendum to legal plat (sheet 25) for visible improvements within 400' of the proposed well pad.

T6S, R92W, 6th P.M.

ENCANA OIL & GAS (USA) INC

WELL LOCATION, ENCANA FEE 24-9B (K19CNE), LOCATED AS SHOWN IN LOT 3 OF SECTION 19, T6S, R92W, 6th P.M. GARFIELD COUNTY, COLORADO.



NOTES:

1. Well footages are measured at right angles to the Section Lines.
2. Bearings are based on Global Positioning Satellite observations.
3. G.P.S. Operator: C.D. SLAUGH, (PDOP) = 2.4



THIS IS TO CERTIFY THAT THE ABOVE PLAT WAS PREPARED FROM FIELD NOTES AND SURVEYS MADE BY ME OR UNDER MY CLOSE PERSONAL SUPERVISION AND THAT THE SAME ARE TRUE TO THE BEST OF MY KNOWLEDGE AND BELIEF.



TRI STATE LAND SURVEYING & CONSULTING

180 NORTH VERNAL AVE. - VERNAL, UTAH 84078
(435) 781-2501

DATE SURVEYED: 11-08-10	SURVEYED BY: C.D.S.	SHEET 21 OF 11
DATE DRAWN: 12-23-10	DRAWN BY: L.C.S.	
REVISED: L.C.S. 02-24-11	SCALE: 1" = 1000'	

NAD 83 (SURFACE LOCATION)

LATITUDE = 39°30'40.42"
(39.511227)

LONGITUDE = 107°42'49.74"
(107.713816)

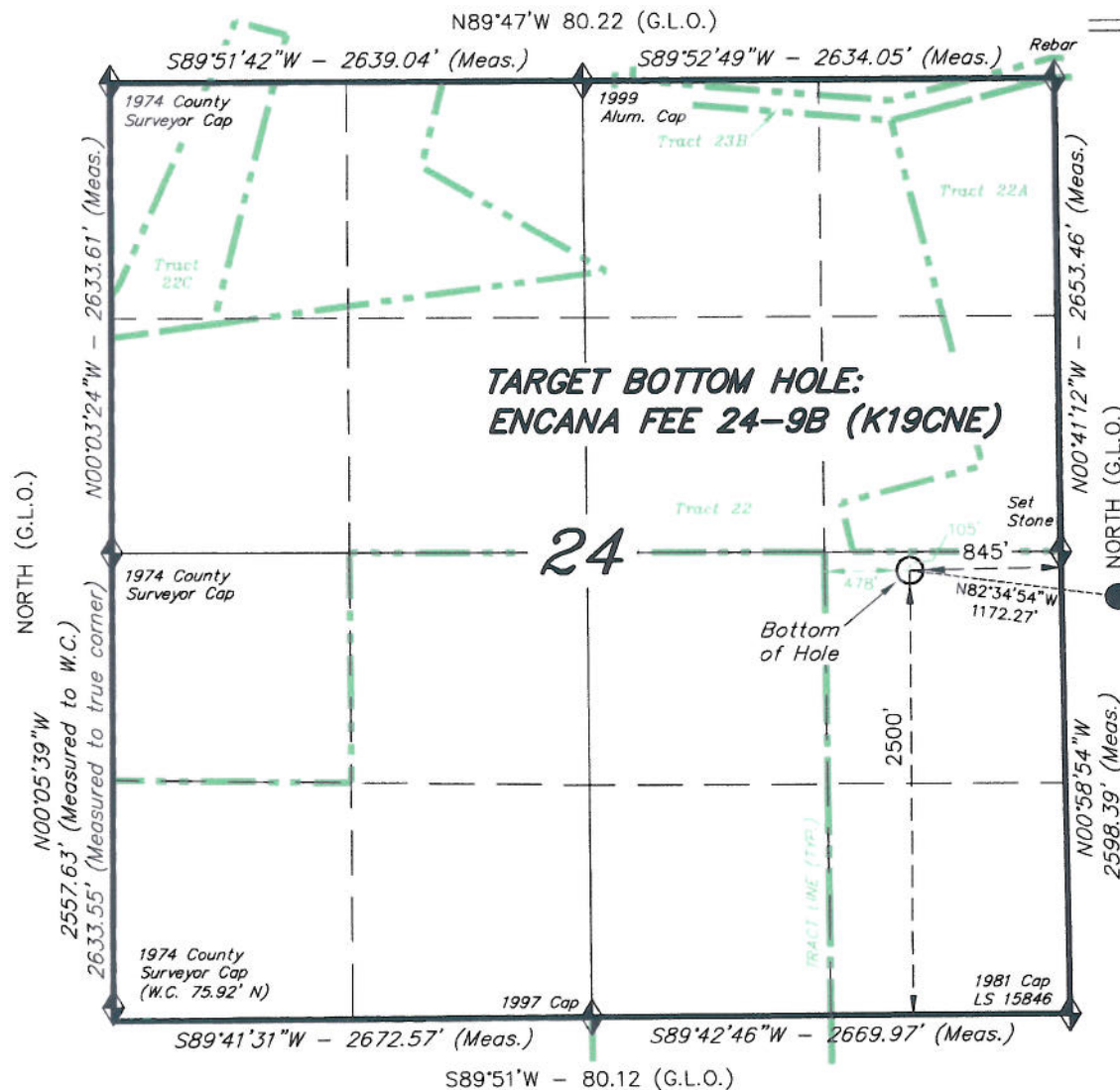


SECTION CORNERS LOCATED

Basis of elevation is the Billo & Mangum Station: 39°31'53.80" N Lat. & 107°47'07.78" W Long. (NAD 83). Elevation = 5323.1' (NAVD83).

T6S, R93W, 6th P.M.

ENCANA OIL & GAS (USA) INC



TARGET BOTTOM HOLE, ENCANA FEE 24-9B (K19CNE), LOCATED AS SHOWN IN THE NE 1/4 SE 1/4 OF SECTION 24, T6S, R93W, 6th P.M. GARFIELD COUNTY, COLORADO.



NOTES:

1. Well footages are measured at right angles to the Section Lines.
2. Bearings are based on Global Positioning Satellite observations.

Top of See Hole
21

THIS IS TO CERTIFY THAT THE ABOVE PLAT WAS PREPARED FROM FIELD NOTES OF SURVEYS MADE BY ME OR UNDER MY SUPERVISION. THE LOCATION HAS BEEN STAKED ON THE GROUND AS SHOWN ON THE PLAT, AND THAT THE SAME ARE TRUE AND CORRECT TO THE BEST OF MY KNOWLEDGE AND BELIEF.

REGISTERED LAND SURVEYOR
REGISTRATION No. 30125
STATE OF COLORADO
30125
02/24/11

◆ = SECTION CORNERS LOCATED

Basis of elevation is the Rifle 2 Triangulation Station. 39°31'53.80" N Lat. & 107°47'07.78" W Long. (NAD 83). Elevation = 5323.1' (NAVD88).

TRI STATE LAND SURVEYING & CONSULTING

180 NORTH VERNAL AVE. - VERNAL, UTAH 84078
(435) 781-2501

DATE SURVEYED: 11-08-10	SURVEYED BY: C.D.S.	SHEET 211 OF 11
DATE DRAWN: 12-23-10	DRAWN BY: L.C.S.	
REVISED: L.C.S. 02-24-11	SCALE: 1" = 1000'	