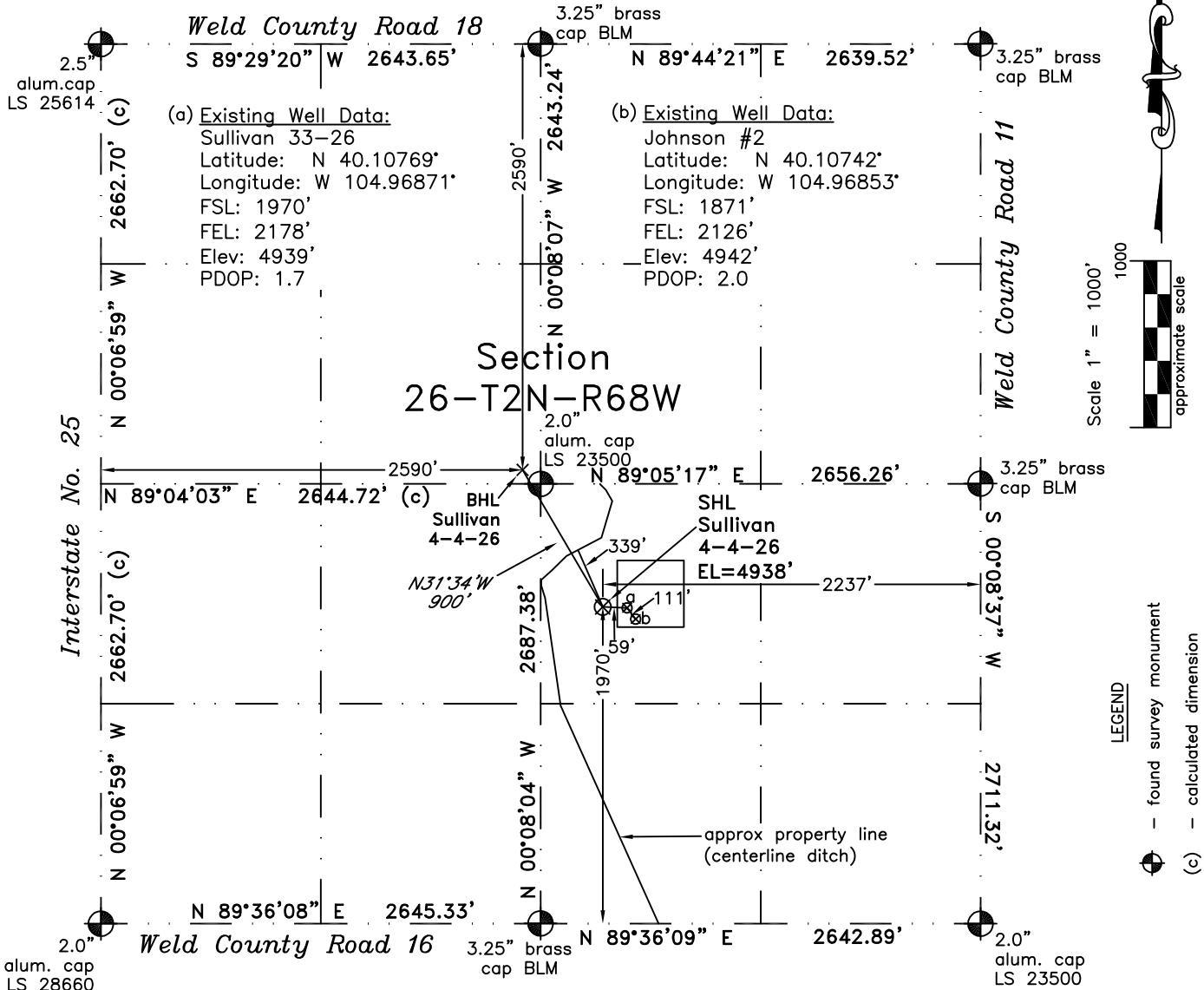


WELL LOCATION CERTIFICATE

THIS MAP DOES NOT
 REPRESENT A BOUNDARY SURVEY



In accordance with a request from Emily Cozyris of EnCana Oil & Gas (USA) Inc., PLS Group, LLC has determined the location of the **Sullivan 4-4-26** well site to be SHL: 1970' FSL & 2237' FEL, (BHL: 2590' FNL & 2590' FWL) as measured at ninety (90) degrees from the section lines of Section 26, Township 2 North, Range 68 West of the 6th Principal Meridian, Weld County, Colorado.

Proposed Surface Hole Data:

Latitude: N 40.10769° (BHL 40.10980°)
 Longitude: W 104.96892° (BHL 104.97059°)
 PDOP: 1.2
 Nearest: Building 885' northwest
 Public Road 1783' northwest
 Property Line: 339' northwest
 Existing Well: Sullivan 33-26 59' east
 Above Ground Utility 1941' south
 Railroad 18,950' southwest
 Well Window SHL is 47' outside

Notes:

- 1) Bearings and distances based on NAD 83 Colorado North State Plane Coordinates using RTK GPS observations taken 3/30/11 by operator J.R. McGehee.
- 2) Conversion factor to ground (1.000274029).
- 3) Elevations based on NAVD 88 GPS heights and Geoid 2003 corrections.
- 4) See improvement map for visible improvements within 400 feet.
- 5) The surface use is agricultural field.

NOTICE: According to Colorado law you MUST commence any legal action based upon any defect in this W.L.C. within three years after you first discover such defect. In no event may any action based upon any defect in this W.L.C. be commenced more than ten years from this said date of the certification shown hereon.

I hereby certify that this Well Location Certificate was prepared by me or under my direct supervision on 3/31/11 for and on behalf of EnCana Oil & Gas (USA) Inc. That it is not a Land Survey Plat or an Improvement Survey Plat and that it is not to be relied upon for establishment of fences, buildings, or other future improvement lines.

John Robert McGehee PLS#38219
 Well: Sullivan 4-4-26