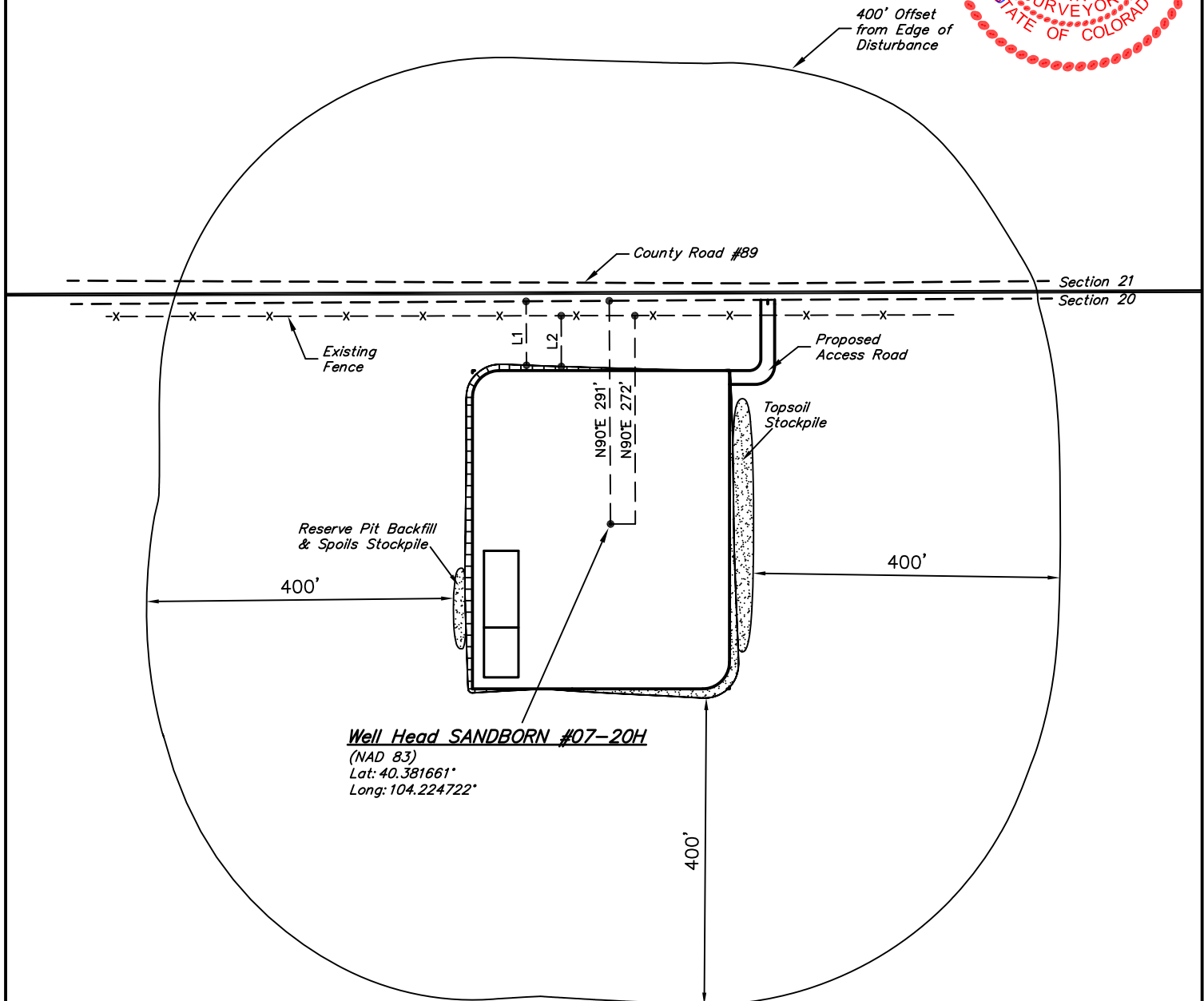


EOG RESOURCES, INC.

ADDENDUM TO LEGAL PLAT FOR

SANDBORN #07-20H
SECTION 20, T5N, R61W, 6th P.M.
912' FSL 301' FEL

SCALE: 1" = 200'
DATE: 01-28-11
DRAWN BY: K.O.



LINE TABLE			
LINE	DESCRIPTION	BEARING	LENGTH
L1	To County Road #89	N89°40'E	83.28'
L2	To Fence	N89°55'E	66.23'

UINTAH ENGINEERING & LAND SURVEYING
85 So. 200 East * Vernal, Utah 84078 * (435) 789-1017

EOG RESOURCES, INC.

CONSTRUCTION LAYOUT CROSS SECTIONS FOR

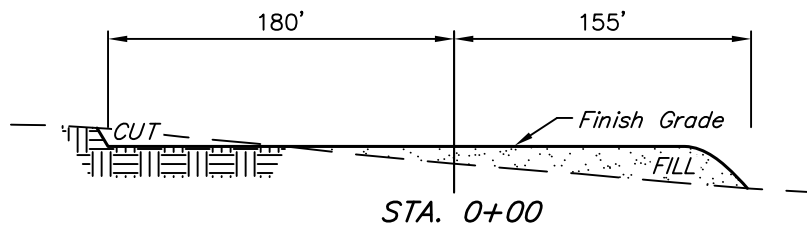
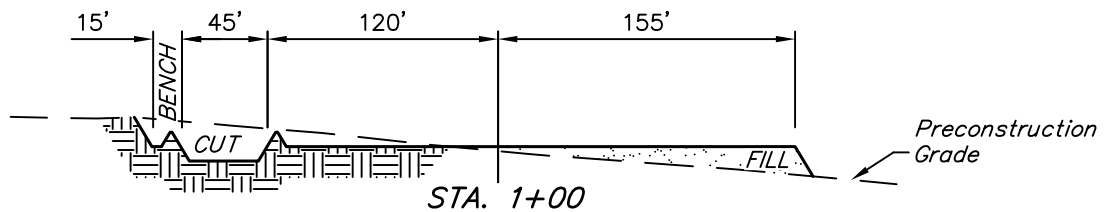
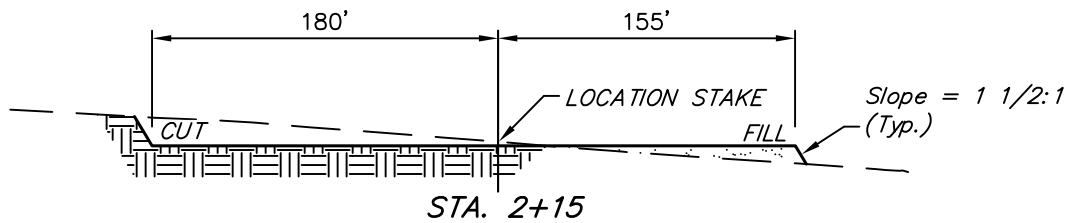
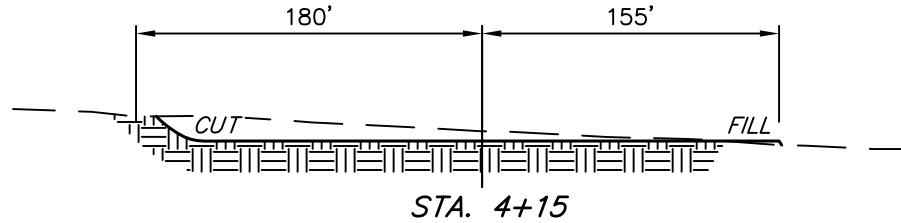
SANDBORN #07-20H

SECTION 20, T5N, R61W, 6th P.M.

912' FSL 301' FEL

FIGURE #2

1" = 40'
X-Section
Scale
1" = 100'
DATE: 01-28-11
DRAWN BY: K.O.



NOTE:

Topsoil should not be Stripped Below Finished Grade on Substructure Area.

APPROXIMATE ACREAGES

WELL SITE DISTURBANCE = ± 4.091 ACRES
ACCESS ROAD DISTURBANCE = ± 0.104 ACRES
TOTAL = ± 4.195 ACRES

* NOTE:
FILL QUANTITY INCLUDES 5% FOR COMPACTION

APPROXIMATE YARDAGES

(6") Topsoil Stripping = 2,800 Cu. Yds.
Remaining Location = 7,980 Cu. Yds.
TOTAL CUT = 10,780 CU.YDS.
FILL = 7,630 CU.YDS.

EXCESS MATERIAL = 3,150 Cu. Yds.
Topsoil & Pit Backfill = 3,150 Cu. Yds.
(1/2 Pit Vol.)
EXCESS UNBALANCE = 0 Cu. Yds.
(After Interim Rehabilitation)

UINTAH ENGINEERING & LAND SURVEYING
85 So. 200 East * Vernal, Utah 84078 * (435) 789-1017

EOG RESOURCES, INC.

TYPICAL RIG LAYOUT FOR

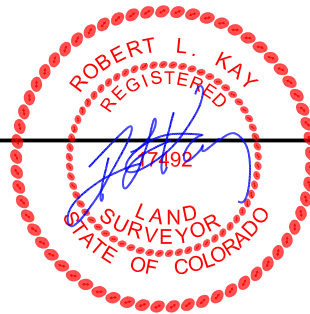
SANDBORN #07-20H
SECTION 20, T5N, R61W, 6th P.M.
912' FSL 301' FEL

FIGURE #3

SCALE: 1" = 60'

DATE: 01-28-11

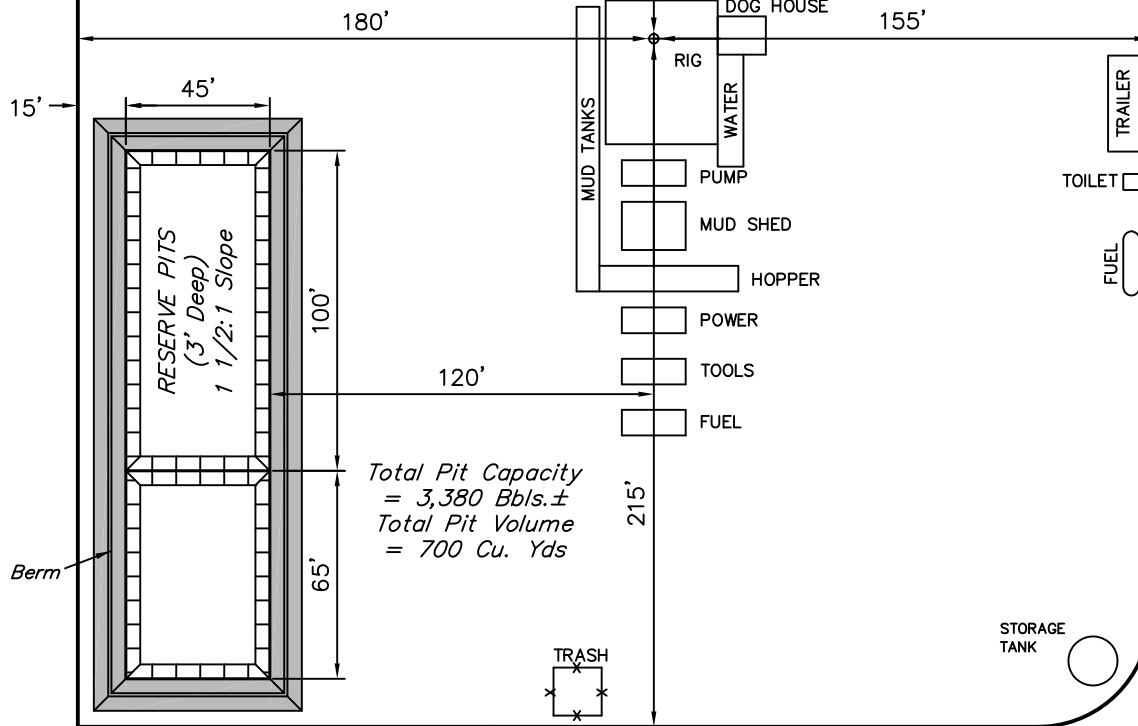
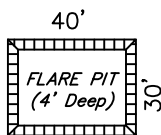
DRAWN BY: K.O.



Proposed
Access Road

DATA

NOTE:
Flare Pit is to be
located a min. of 100'
from the Well Head.



UINTAH ENGINEERING & LAND SURVEYING

85 So. 200 East * Vernal, Utah 84078 * (435) 789-1017

EOG RESOURCES, INC.

RECLAMATION DIAGRAM FOR

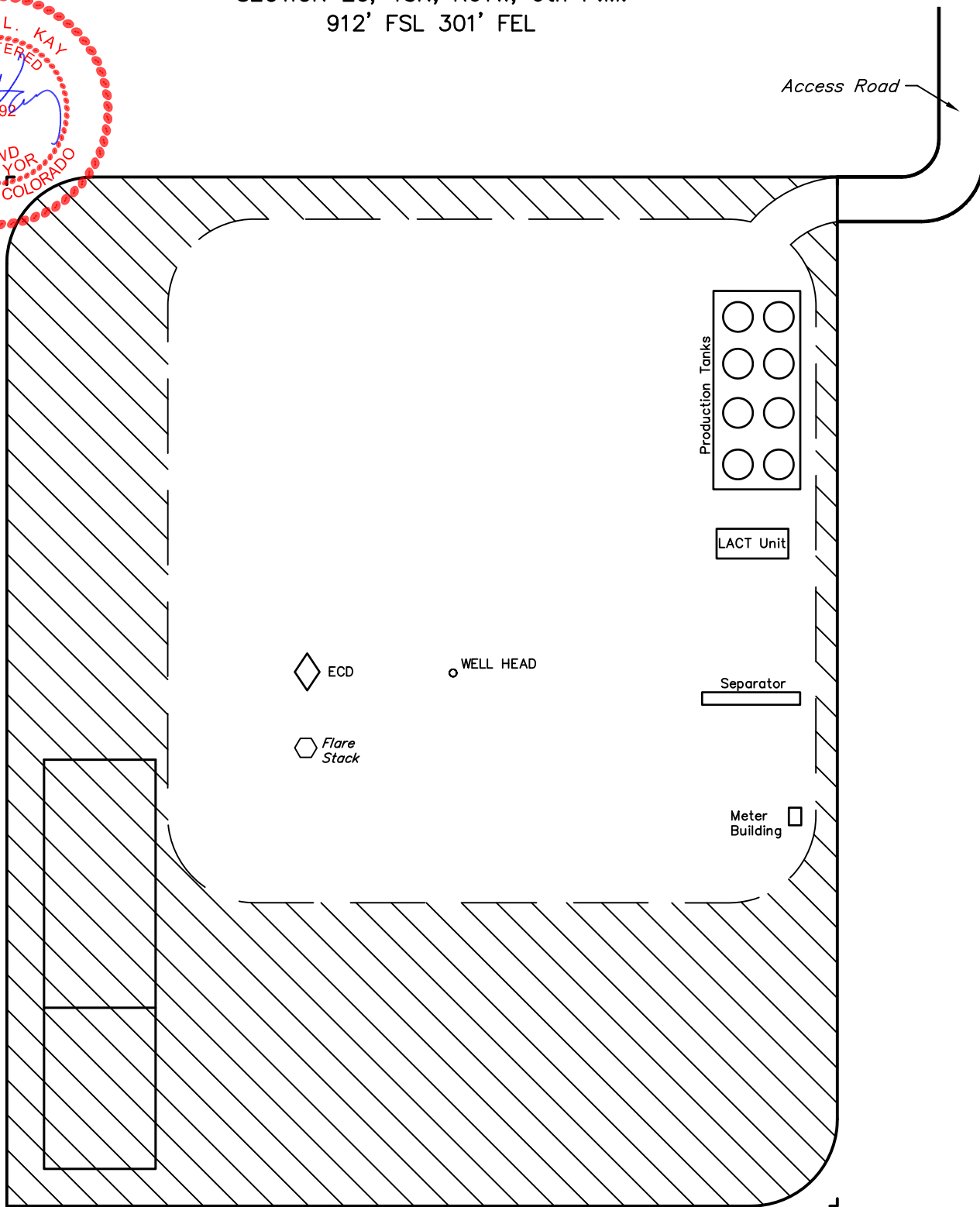
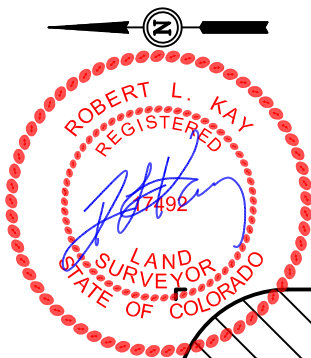
SANDBORN #07-20H
SECTION 20, T5N, R61W, 6th P.M.
912' FSL 301' FEL

FIGURE #4

SCALE: 1" = 60'

DATE: 01-28-11

DRAWN BY: K.O.



APPROXIMATE ACREAGES

UN-RECLAIMED = ± 1.537 ACRES



RECLAIMED AREA

UINTAH ENGINEERING & LAND SURVEYING

85 So. 200 East * Vernal, Utah 84078 * (435) 789-1017

UINTAH ENGINEERING & LAND SURVEYING
85 So. 200 East * Vernal, Utah 84078 * (435) 789-1017