

**EOG RESOURCES, INC.**  
**SANDBORN #07-20H**  
LOCATED IN WELD COUNTY, COLORADO  
SECTION 20, T5N, R61W, 6th P.M.

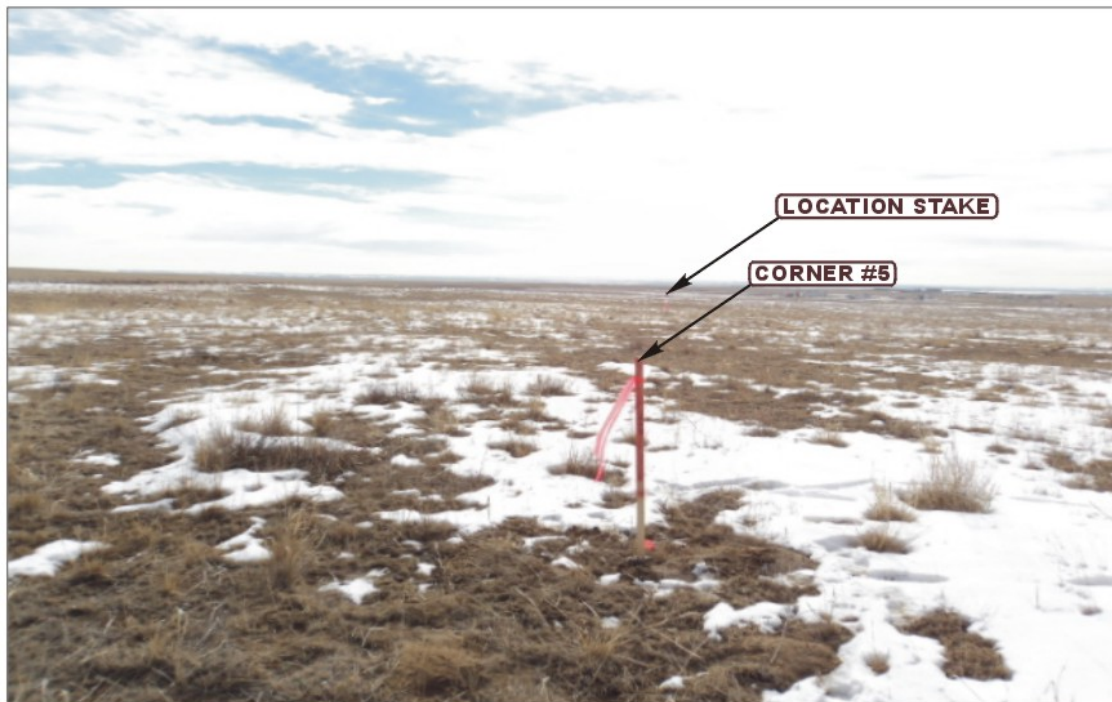


PHOTO: VIEW FROM CORNER #5 TO LOCATION STAKE

CAMERA ANGLE: SOUTHERLY



PHOTO: VIEW FROM BEGINNING OF PROPOSED ACCESS

CAMERA ANGLE: WESTERLY



**UELS** Uintah Engineering & Land Surveying  
85 South 200 East Vernal, Utah 84078  
(435) 789-1017 \* FAX (435) 789-1813

**LOCATION PHOTOS**

**02 02 11**  
MONTH DAY YEAR

PHOTO  
**P1**

TAKEN BY: G.M.

DRAWN BY: S.F.

REVISED: 00-00-00

**EOG RESOURCES, INC.**  
**SANDBORN #07-20H**  
**LOCATED IN WELD COUNTY, COLORADO**  
**SECTION 20, T5N, R61W, 6th P.M.**



PHOTO: VIEW OF LOCATION STAKE

CAMERA ANGLE: NORTHERLY



PHOTO: VIEW OF LOCATION STAKE

CAMERA ANGLE: EASTERLY



**UELS**

Uintah Engineering & Land Surveying  
85 South 200 East Vernal, Utah 84078  
(435) 789-1017 \* FAX (435) 789-1813

**LOCATION PHOTOS**

**02 02 11**  
MONTH DAY YEAR

**PHOTO**  
**P2**

TAKEN BY: G.M.

DRAWN BY: S.F.

REVISED: 00-00-00



**EOG RESOURCES, INC.**  
**SANDBORN #07-20H**  
**LOCATED IN WELD COUNTY, COLORADO**  
**SECTION 20, T5N, R61W, 6th P.M.**

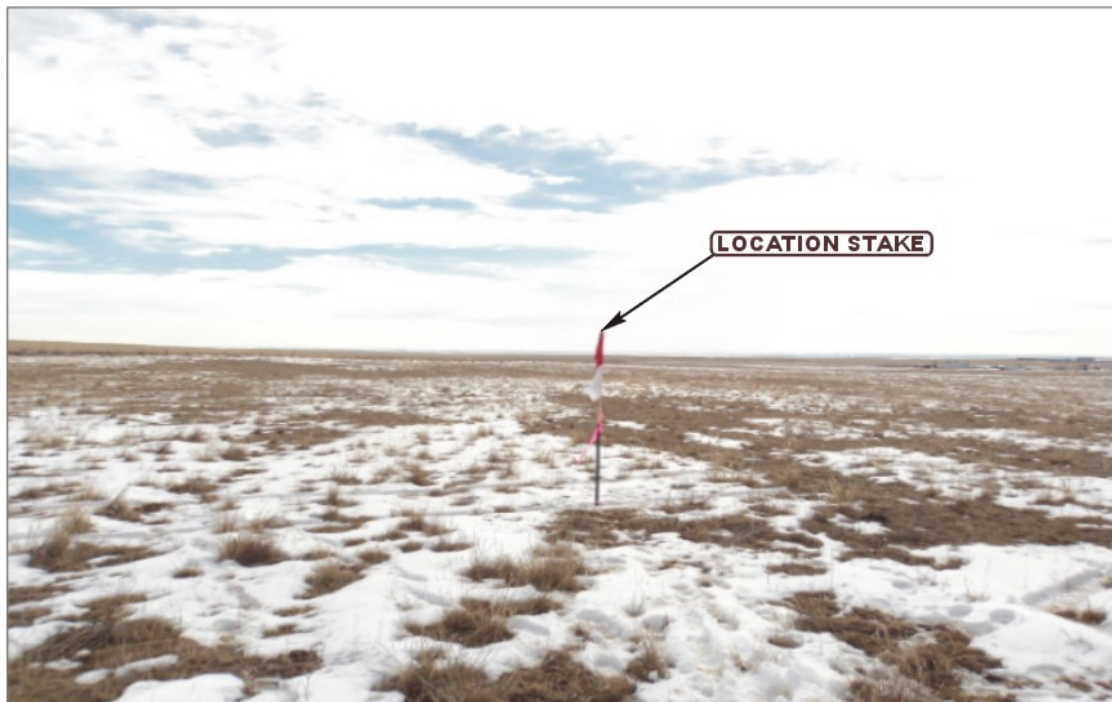


PHOTO: VIEW OF LOCATION STAKE

CAMERA ANGLE: SOUTHERLY



PHOTO: VIEW OF LOCATION STAKE

CAMERA ANGLE: WESTERLY



**UELS** Uintah Engineering & Land Surveying  
85 South 200 East Vernal, Utah 84078  
(435) 789-1017 \* FAX (435) 789-1813

**LOCATION PHOTOS**

**02 02 11**  
MONTH DAY YEAR

**PHOTO**  
**P3**

TAKEN BY: G.M.

DRAWN BY: S.F.

REVISED: 00-00-00