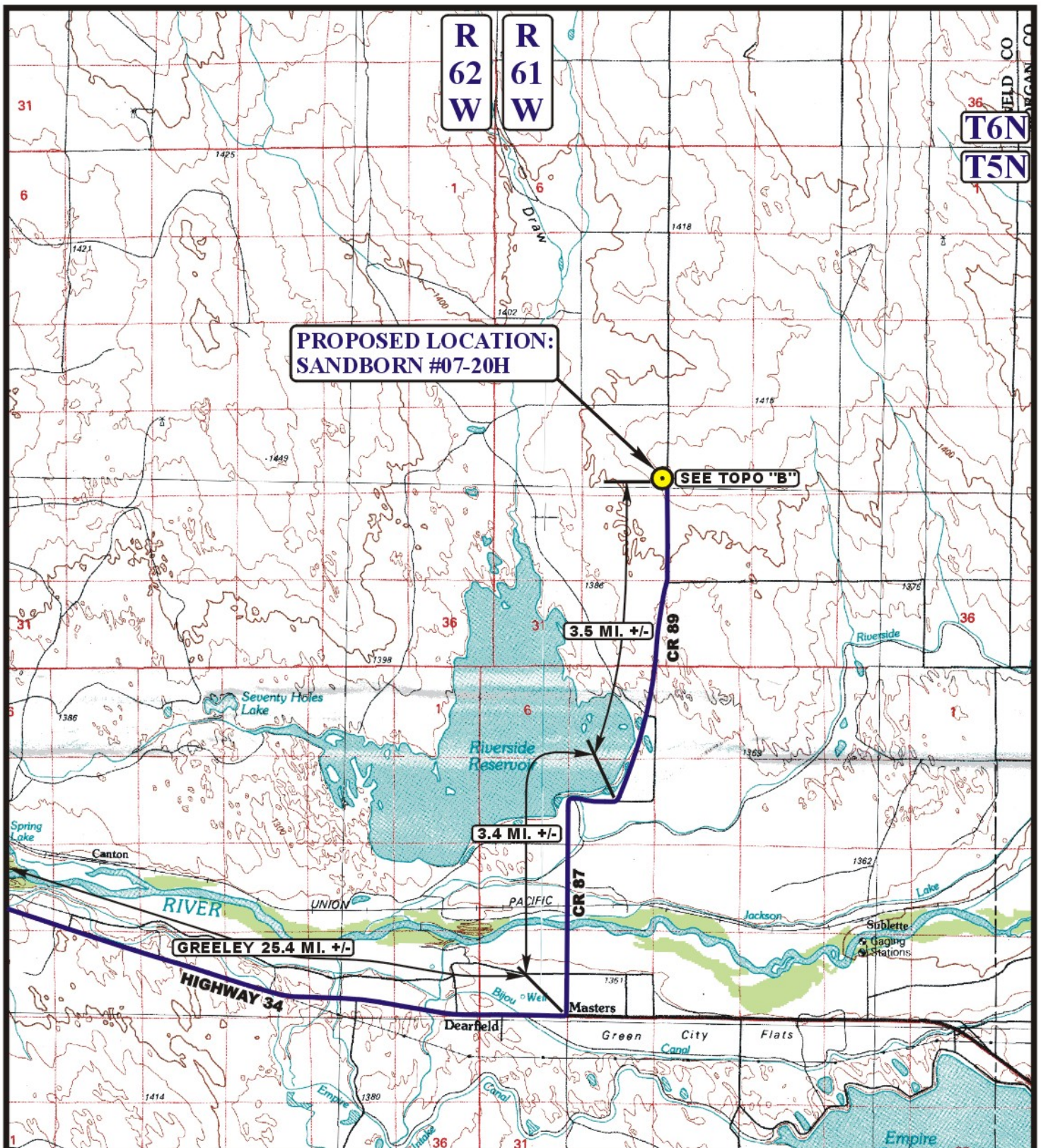


EOG RESOURCES, INC.
SANDBORN #07-20H
SECTION 20, T5N, R61W, 6th P.M.

PROCEED IN AN EASTERLY, THEN SOUTHEASTERLY DIRECTION FROM GREELEY, COLORADO ALONG HIGHWAY 34 APPROXIMATELY 25.4 MILES TO THE JUNCTION OF THIS ROAD AND COUNTY ROAD 87 TO THE NORTH; TURN LEFT AND PROCEED IN A NORTHERLY, THEN EASTERLY DIRECTION APPROXIMATELY 3.4 MILES TO THE JUNCTION OF THIS ROAD AND COUNTY ROAD 89 TO THE NORTH; TURN LEFT AND PROCEED IN A NORTHERLY DIRECTION APPROXIMATELY 3.5 MILES TO BEGINNING OF THE PROPOSED ACCESS ROAD TO THE WEST; FOLLOW ROAD FLAGS IN A WESTERLY, THEN NORTHERLY DIRECTION APPROXIMATELY 151' TO THE PROPOSED LOCATION.

TOTAL DISTANCE FROM GREELEY, COLORADO TO THE PROPOSED LOCATION IS APPROXIMATELY 32.3 MILES.



LEGEND:

 PROPOSED LOCATION

EOG RESOURCES, INC.

SANDBORN #07-20H
SECTION 20, T5N, R61W, 6th P.M.
912' FSL 301' FEL



Uintah Engineering & Land Surveying
 85 South 200 East Vernal, Utah 84078
 (435) 789-1017 * FAX (435) 789-1813

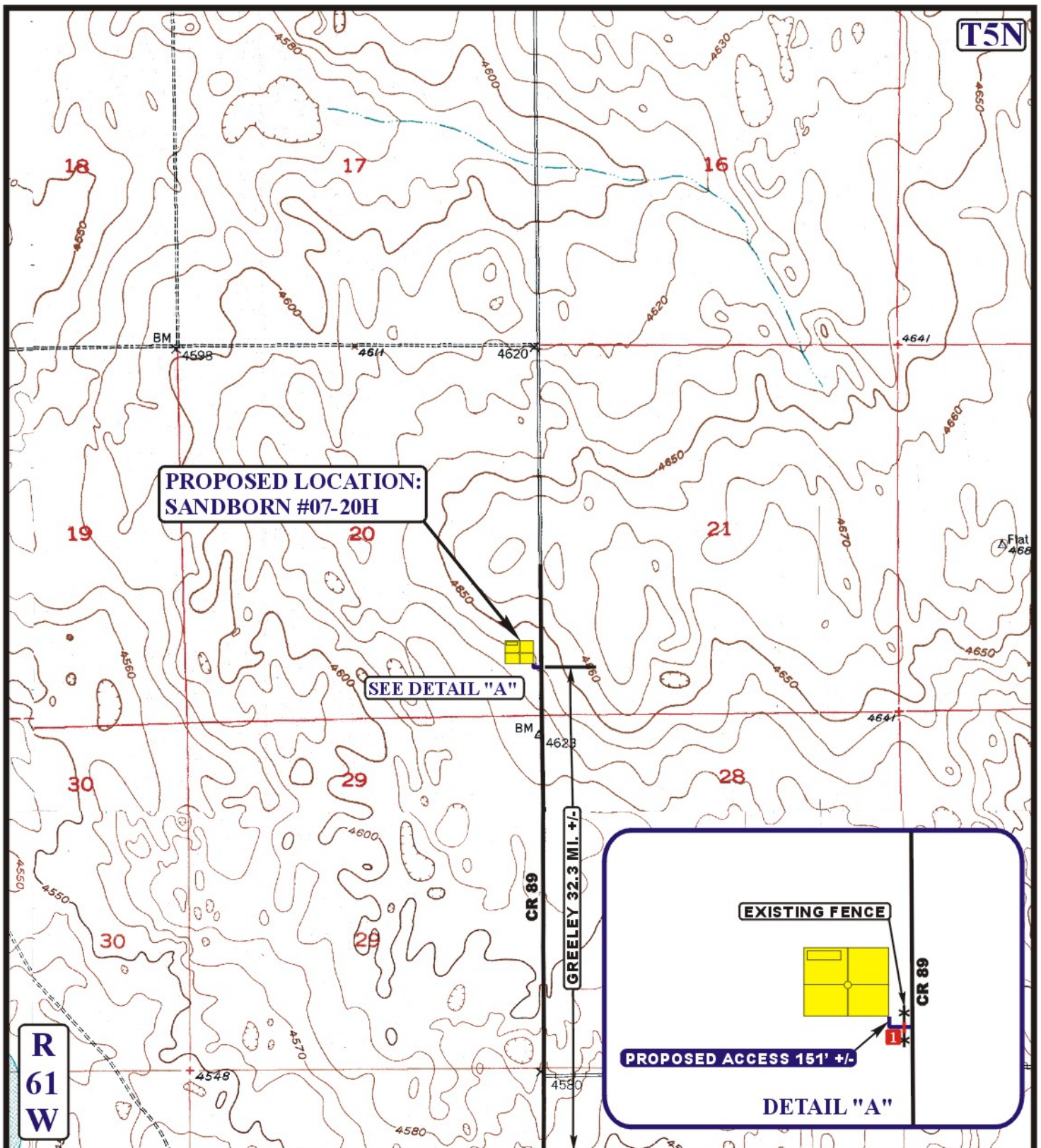


ACCESS ROAD
MAP

02 02 11
 MONTH DAY YEAR

SCALE: 1:100,000 DRAWN BY: S.F. REVISED: 00-00-00





LEGEND:

- EXISTING ROAD
- - - - - PROPOSED ACCESS ROAD
- * * * * * EXISTING FENCE
- I** INSTALL CATTLE GUARD



Utah Engineering & Land Surveying
 85 South 200 East Vernal, Utah 84078
 (435) 789-1017 * FAX (435) 789-1813



EOG RESOURCES, INC.

SANDBORN #07-20H
SECTION 20, T5N, R61W, 6th P.M.
912' FSL 301' FEL

ACCESS ROAD
MAP

02 02 11
 MONTH DAY YEAR

B
TOPO

SCALE: 1" = 2000' DRAWN BY: S.F. REVISED: 00-00-00