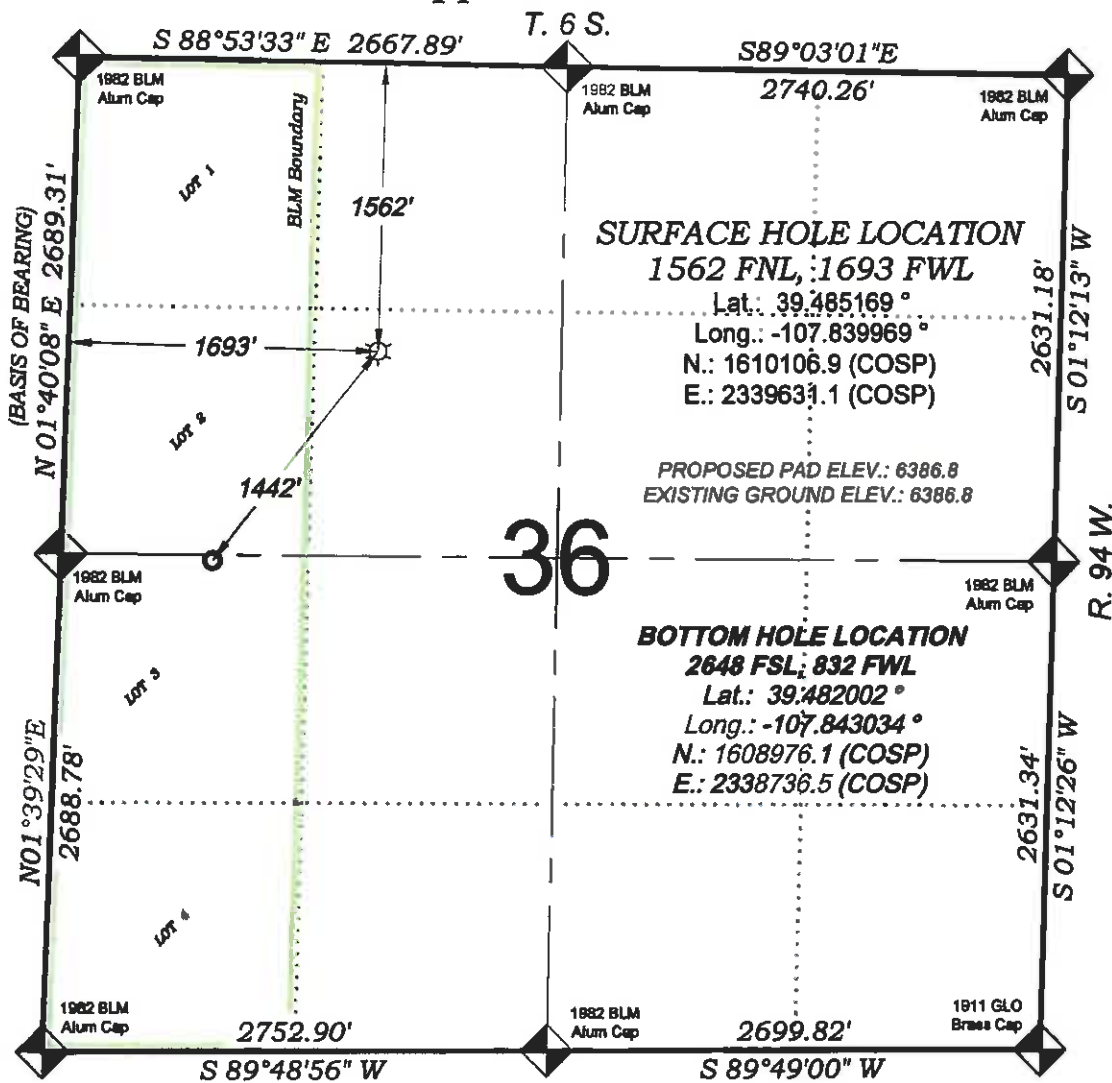
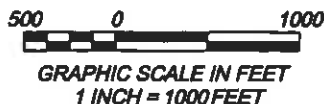


# Hoepli RWF 512-36



SEE CONSTRUCTION LAYOUT  
PLAT FOR VISIBLE IMPROVEMENTS  
WITHIN 400' OF THIS LOCATION



## SURVEYORS STATEMENT

I, MICHAEL J. LANGHORNE, A REGISTERED LAND SURVEYOR IN THE STATE OF COLORADO DO HEREBY CERTIFY THAT THE SURVEY SHOWN HEREON WAS PREPARED UNDER MY DIRECT SUPERVISION AND HAS BEEN STAKED ON THE GROUND AS SHOWN ON THE PLAT AND CHECKING THAT THIS MAP IS A TRUE REPRESENTATION THEREOF.

MICHAEL J. LANGHORNE, COLORADO REGISTRATION NO. 36572  
FOR AND ON BEHALF OF  
BOOKCLIFF SURVEY SERVICES, INC.

## REFERENCES

- 1) DEPENDENT RESURVEY T. 6 S., R. 94 W., 6th P.M. (GLO PLAT)
- 2) U.S.G.S. QUAD: NORTH MAMM PEAK, CO

REVISED: 3/10/11

SURVEY DATE: 11/4/10  
MAP DATE: 9/19/08  
SCALE: 1" = 1000'  
PLAT: 1 of 1  
PROJECT: Williams Valley

## - LEGEND -

FIELD LOCATED SECTION  
MONUMENTS AS DESCRIBED

FIELD SURVEYED  
WELL LOCATION  
CALCULATED BOTTOM  
HOLE LOCATION  
CALCULATED SECTION  
CORNER LOCATION

## NOTES

- 1) ELEVATIONS BASED ON N.A. V.D. 1988 PUBLISHED COORDINATES.
- 2) LATITUDES AND LONGITUDES ARE BASE ON NAD 83, PUBLISHED COORDINATES
- 3) STATE PLANE COORDINATES ARE BASED ON COLORADO CENTRAL ZONE, U.S. SURVEY FEET.
- 4) ELEVATION MASK SET TO 15'
- 5) GPS OPERATOR J. KIRKPATRICK, OBSERVED A PDOP 1.7 ON SURVEY POINT NUMBER 110411.
- 6) SURFACE AND BOTTOM HOLE LOCATIONS ARE MEASURED 90° FROM SECTION LINES.

WELL LOCATION PLAT Prepared for:

Williams. Williams Production, RMT

SE1/4 NW1/4, SECTION 36  
T. 6 S., R. 94 W. of the 6th. P.M.  
GARFIELD COUNTY, COLORADO

120 East Third Street  
Boulder, Colorado 80502  
Ph: (303) 442-2720  
Fax: (303) 442-2773

**BOOKCLIFF**  
Survey Services, Inc.