

EOG RESOURCES, INC.

ADDENDUM TO LEGAL PLAT FOR

DUTCH LAKE #11-13H

SECTION 13, T6N, R61W, 6th. P.M.

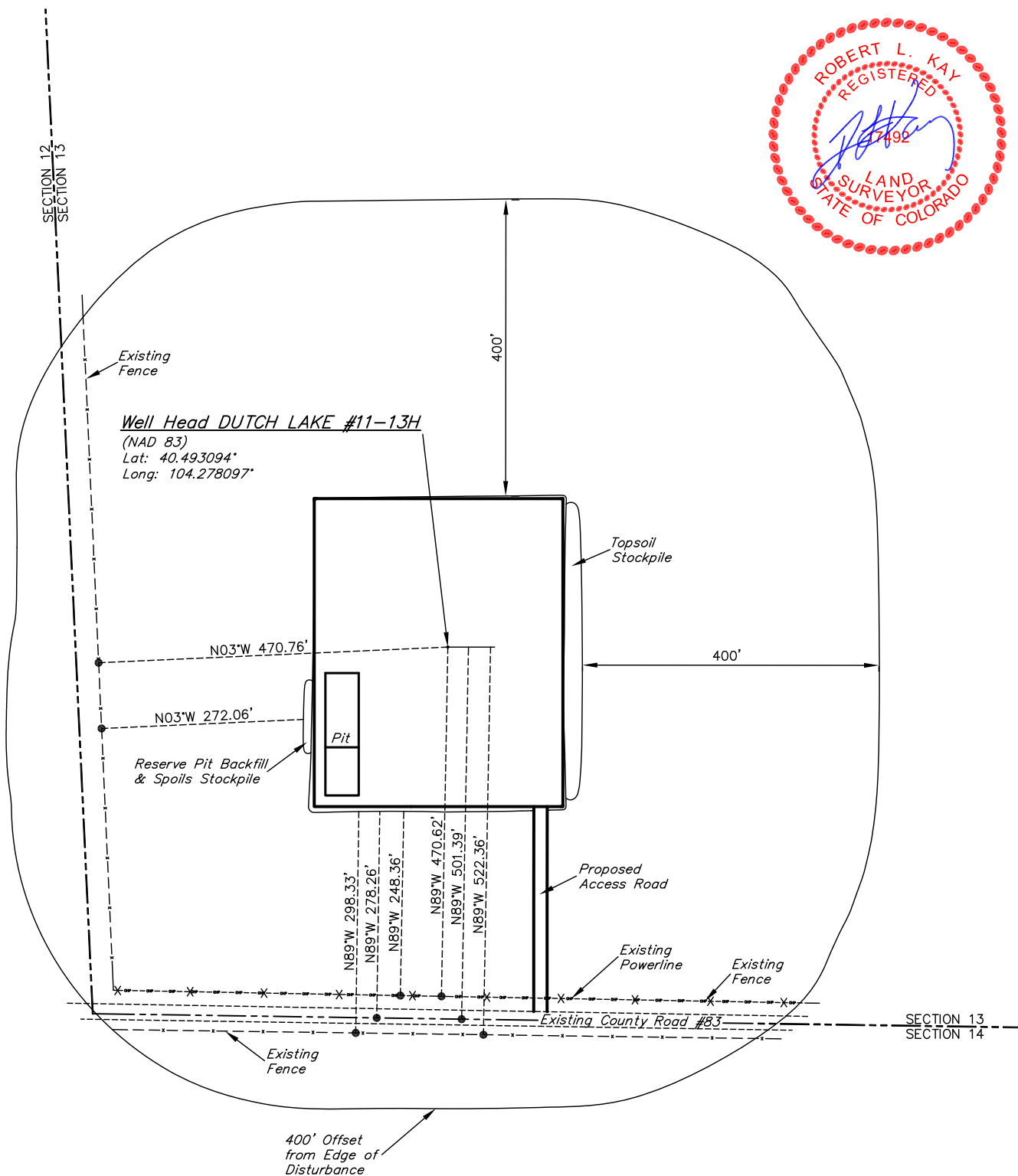
501' FNL 501' FWL

SCALE: 1" = 200'

DATE: 01-05-11

DRAWN BY: J.I.

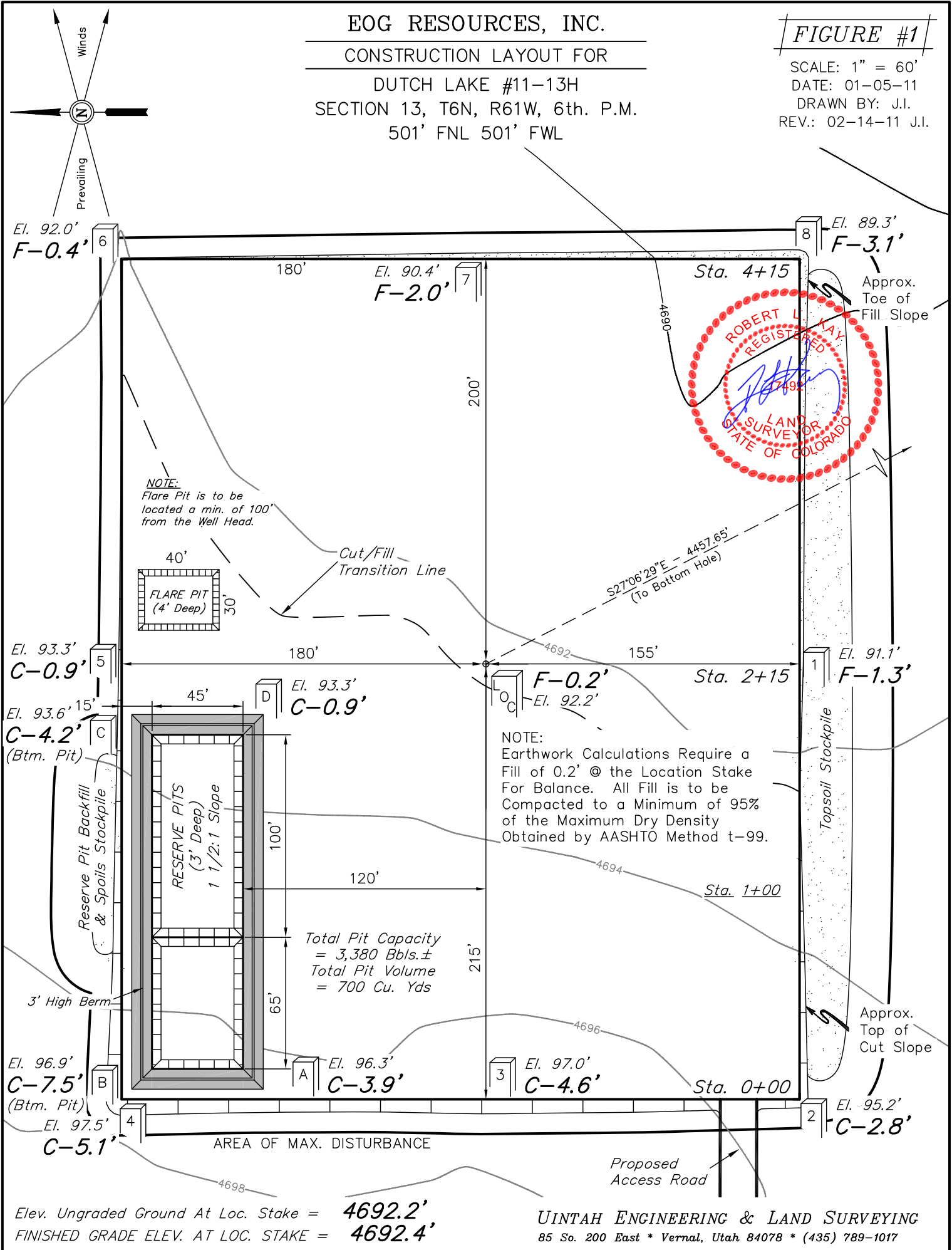
REV.: 02-14-11 J.I.



EOG RESOURCES, INC.
CONSTRUCTION LAYOUT FOR
DUTCH LAKE #11-13H
SECTION 13, T6N, R61W, 6th. P.M.
501' FNL 501' FWL

FIGURE #1

SCALE: 1" = 60'
 DATE: 01-05-11
 DRAWN BY: J.I.
 REV.: 02-14-11 J.I.



Elev. Ungraded Ground At Loc. Stake = **4692.2'**
 FINISHED GRADE ELEV. AT LOC. STAKE = **4692.4'**

UINTAH ENGINEERING & LAND SURVEYING
 85 So. 200 East * Vernal, Utah 84078 * (435) 789-1017

EOG RESOURCES, INC.

FIGURE #2

CONSTRUCTION LAYOUT CROSS SECTIONS FOR

DUTCH LAKE #11-13H

SECTION 13, T6N, R61W, 6th. P.M.

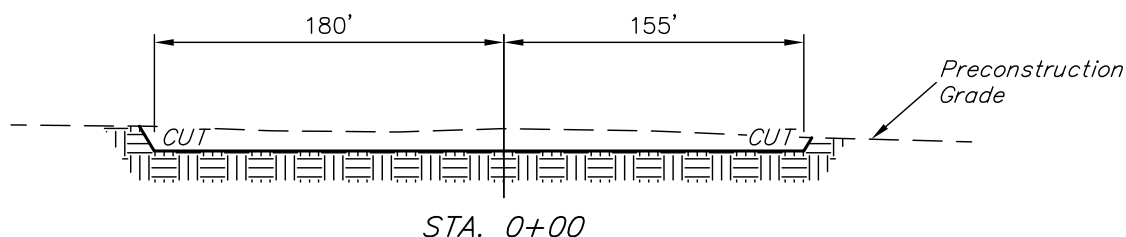
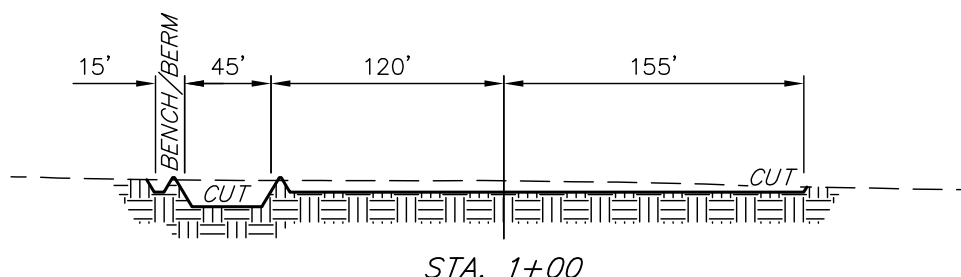
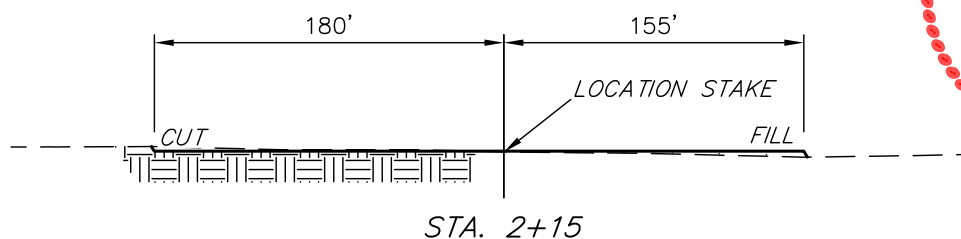
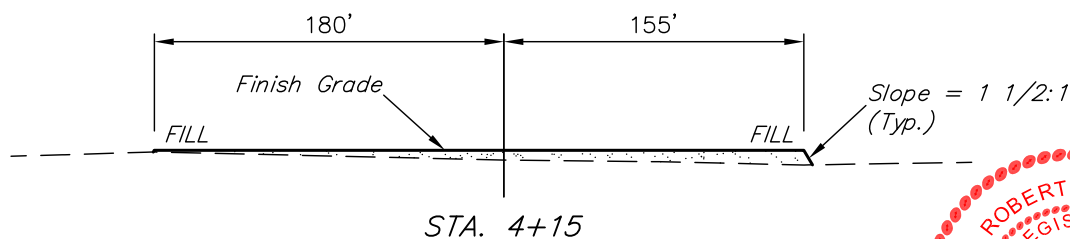
501' FNL 501' FWL

X-Section
Scale
1" = 40'
1" = 100'

DATE: 01-05-11

DRAWN BY: J.I.

REV.: 02-14-11 J.I.



APPROXIMATE ACREAGES

WELL SITE DISTURBANCE = ± 4.038 ACRES
ACCESS ROAD DISTURBANCE = ± 0.186 ACRES
TOTAL = ± 4.224 ACRES

* NOTE:
FILL QUANTITY INCLUDES
5% FOR COMPACTION

APPROXIMATE YARDAGES

(6") Topsoil Stripping = 2,710 Cu. Yds.
Remaining Location = 4,790 Cu. Yds.
TOTAL CUT = 7,500 CU.YDS.
FILL = 4,440 CU.YDS.

EXCESS MATERIAL = 3,060 Cu. Yds.
Topsoil & Pit Backfill = 3,060 Cu. Yds.
(1/2 Pit Vol.)
EXCESS UNBALANCE = 0 Cu. Yds.
(After Interim Rehabilitation)

UINTAH ENGINEERING & LAND SURVEYING
85 So. 200 East * Vernal, Utah 84078 * (435) 789-1017

EOG RESOURCES, INC.

TYPICAL RIG LAYOUT FOR

DUTCH LAKE #11-13H
SECTION 13, T6N, R61W, 6th. P.M.
501' FNL 501' FWL

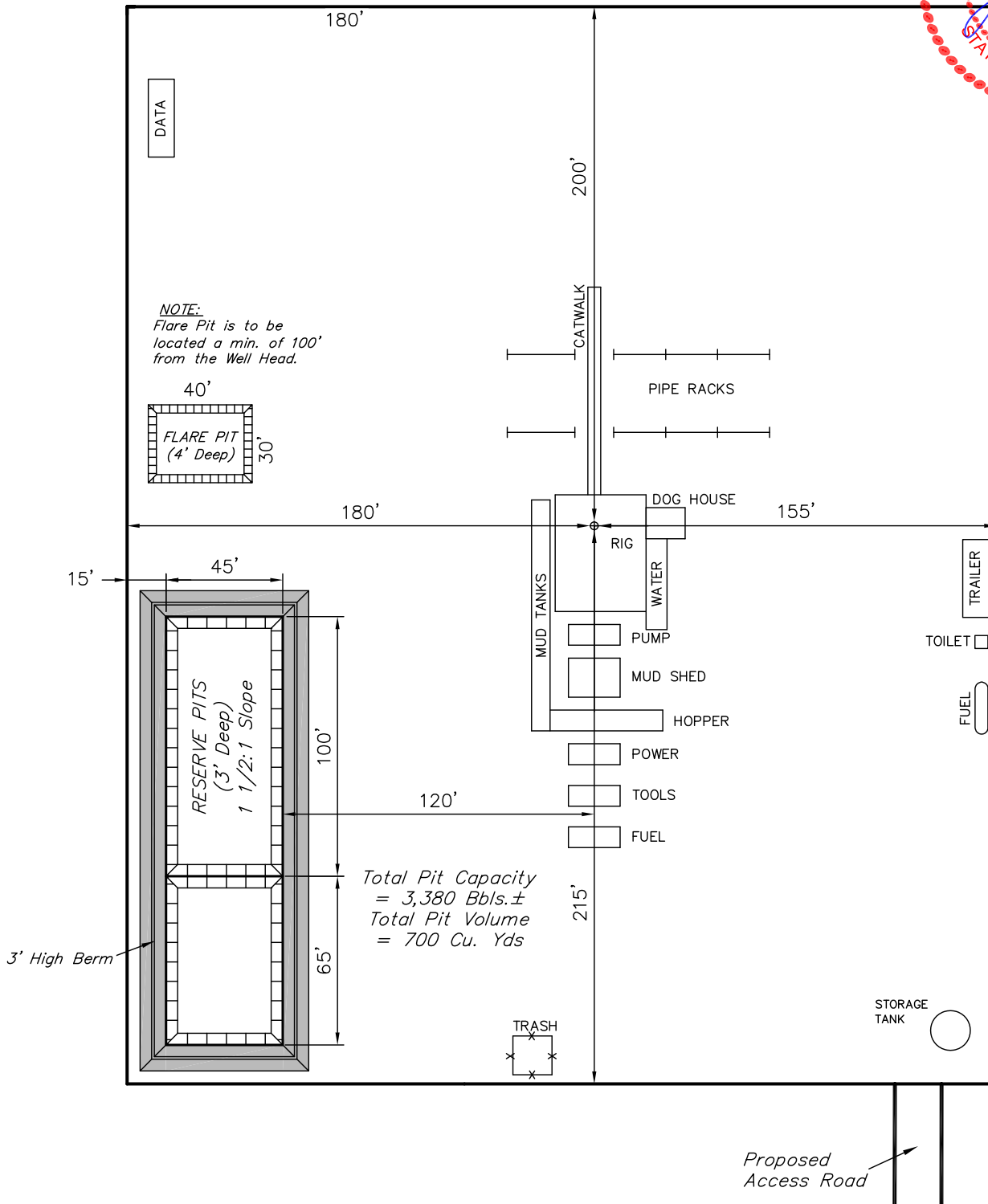
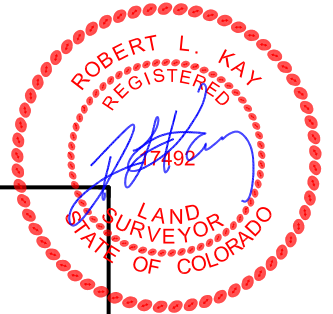
FIGURE #3

SCALE: 1" = 60'

DATE: 01-05-11

DRAWN BY: J.I.

REV.: 02-14-11 J.I.



EOG RESOURCES, INC.

RECLAMATION DIAGRAM FOR

DUTCH LAKE #11-13H
SECTION 13, T6N, R61W, 6th. P.M.
501' FNL 501' FWL

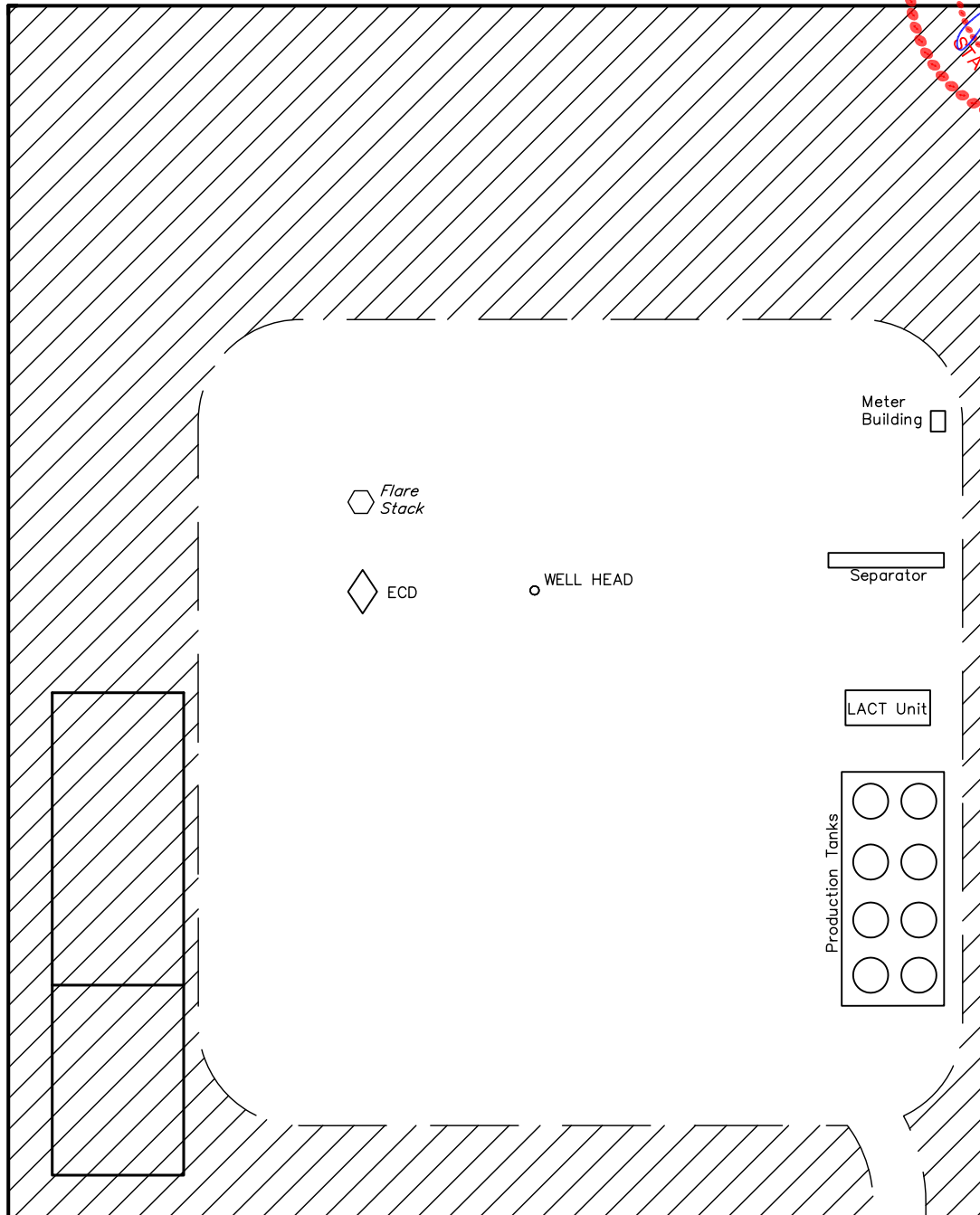
FIGURE #4

SCALE: 1" = 60'

DATE: 01-05-11

DRAWN BY: J.I.

REV.: 02-14-11 J.I.



APPROXIMATE ACREAGES
UN-RECLAIMED = ± 1.645 ACRES

Access Road



RECLAIMED AREA

UINTAH ENGINEERING & LAND SURVEYING
85 So. 200 East * Vernal, Utah 84078 * (435) 789-1017

EOG RESOURCES, INC.

LOCATION DRAWING FOR

DUTCH LAKE #11-13H
SECTION 13, T6N, R61W, 6th. P.M.
501' FNL 501' FWL

FIGURE #5

1989 Alum. Cap,
0.5' Below Road,
LS #20685
Lat: 40.494406°
Long: 104.279875°

N87°15'20"E - 2586.86' (Meas.)
Section Line

2010 UELS Alum.
Cap, Flush w/Ground,
Rebar
Lat: 40.494744°
Long: 104.270586°

N87°20'05"E
2588.02' (Meas.)

NE Cor. Sec. 13
1997 Alum. Cap,
0.5' Below Road,
LS #7242
Lat: 40.495075°
Long: 104.261292°

County Rd. #83

**BERNICE B.
FRANK
TRUST**

L1
L2
L3
L4

S28°W 1523.81'
(To Building)

S15°E 5423.74'
(To Water Well)

NW 1/4

1/16 Section Line

LINE TABLE

LINE	FEATURE	DIRECTION	LENGTH
L1	PROPERTY LINE	WEST	501.02'
L2	POWER LINE	WEST	471.85'
L3	COUNTY ROAD #83	WEST	501.00'
L4	RAILROAD	S74°W	22.09 Miles

1996 Alum. Cap,
0.5' Below Road,
LS #12374
Lat: 40.487431°
Long: 104.279997°

13 1/4 Section Line

N00°45'59"E
2544.57' (Meas.)

SW Cor. Sec. 13
1996 Alum. Cap,
0.5' Below Road,
LS #12374
Lat: 40.480447°
Long: 104.280119°

1/16 Section Line

1/4 Section Line

PLANT COMMUNITY

- ☐ DISTURBED GRASSLAND
- ☐ NATIVE GRASSLAND
- ☐ SHRUB LAND
- ☐ PLAINS RIPARIAN
- ☐ MOUNTAIN RIPARIAN
- ☐ FOREST LAND
- ☐ WETLANDS AQUATIC
- ☐ ALPINE
- ☐ OTHER (Describe): _____

CURRENT LAND USE

- CROP LAND: ☐ IRRIGATED ☐ DRY LAND ☐ IMPROVED PASTURE ☐ HAY MEADOW ☐ CRP
- NON-CROP LAND: ☐ RANGELAND ☐ TIMBER ☐ RECREATIONAL ☐ OTHER (Describe) _____
- SUBDIVIDED: ☐ INDUSTRIAL ☐ COMMERCIAL ☐ RESIDENTIAL _____

FUTURE LAND USE

- CROP LAND: ☐ IRRIGATED ☐ DRY LAND ☐ IMPROVED PASTURE ☐ HAY MEADOW ☐ CRP
- NON-CROP LAND: ☐ RANGELAND ☐ TIMBER ☐ RECREATIONAL ☐ OTHER (Describe) _____
- SUBDIVIDED: ☐ INDUSTRIAL ☐ COMMERCIAL ☐ RESIDENTIAL _____