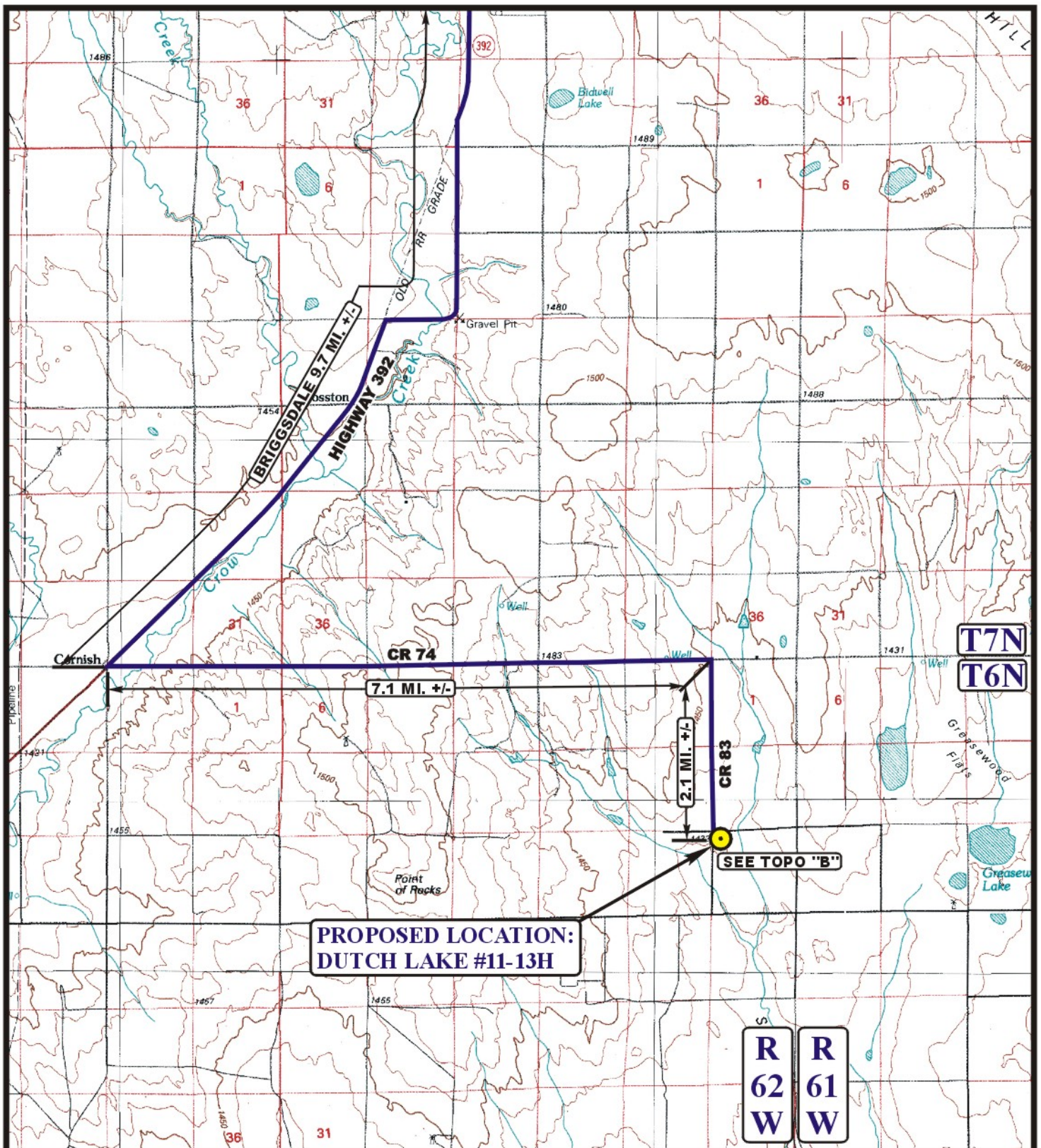


EOG RESOURCES, INC.
DUTCH LAKE #11-13H
SECTION 13, T6N, R62W, 6th P.M.

PROCEED IN A SOUTHERLY, THEN SOUTHWESTERLY DIRECTION FROM BRIGGSDALE, COLORADO ALONG HIGHWAY 392 APPROXIMATELY 9.7 MILES TO THE JUNCTION OF THIS ROAD AND COUNTY ROAD 74 TO THE EAST; TURN LEFT AND PROCEED IN AN EASTERLY DIRECTION APPROXIMATELY 7.1 MILES TO THE JUNCTION OF THIS ROAD AND COUNTY ROAD 83 TO THE SOUTH; TURN RIGHT AND PROCEED IN A SOUTHERLY DIRECTION APPROXIMATELY 2.1 MILES TO THE BEGINNING OF THE PROPOSED ACCESS ROAD TO THE EAST; FOLLOW ROAD FLAGS IN AN EASTERLY DIRECTION APPROXIMATELY 270' TO THE PROPOSED LOCATION.

TOTAL DISTANCE FROM BRIGGSDALE, COLORADO TO THE PROPOSED WELL LOCATION IS APPROXIMATELY 19.0 MILES.



LEGEND:

PROPOSED LOCATION



Uintah Engineering & Land Surveying
 85 South 200 East Vernal, Utah 84078
 (435) 789-1017 * FAX (435) 789-1813



EOG RESOURCES, INC.

DUTCH LAKE #11-13H
 SECTION 13, T6N, R62W, 6th P.M.
 501' FNL 501' FWL

ACCESS ROAD
 MAP

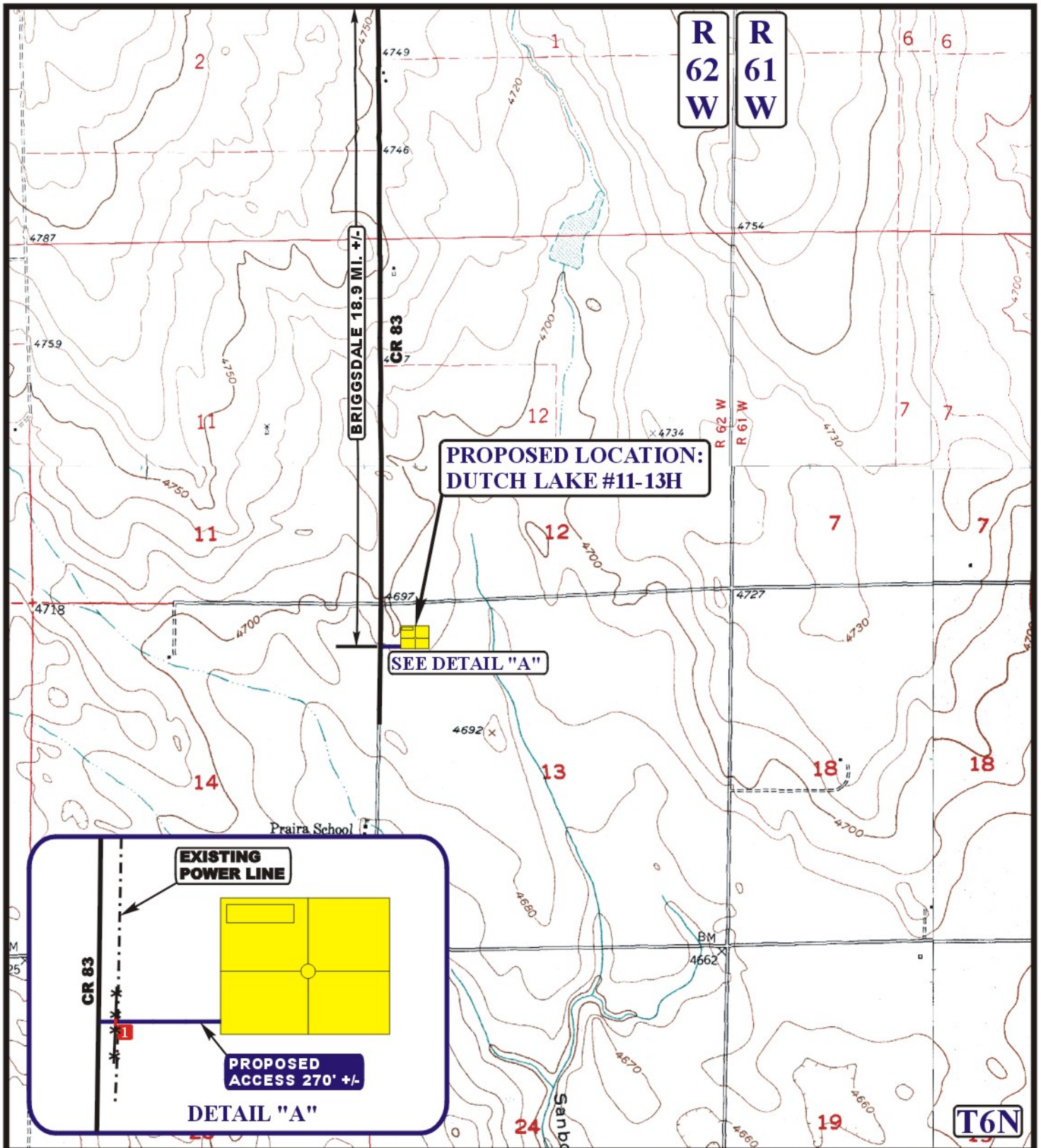
01 12 11
 MONTH DAY YEAR

SCALE: 1:100,000

DRAWN BY: S.F.

REVISED: 02-14-11

A
 TOPO



LEGEND:

- EXISTING ROAD
- PROPOSED ACCESS ROAD
- EXISTING FENCE
- EXISTING POWERLINE
- INSTALL CATTLE GUARD

U&L S
 Uintah Engineering & Land Surveying
 85 South 200 East Vernal, Utah 84078
 (435) 789-1017 * FAX (435) 789-1813



EOG RESOURCES, INC.

DUTCH LAKE #11-13H
 SECTION 13, T6N, R62W, 6th P.M.
 501' FNL 501' FWL

ACCESS ROAD
 MAP

01 12 11
 MONTH DAY YEAR

B
 TOPO

SCALE: 1" = 2000' DRAWN BY: S.F. REVISED: 02-14-11