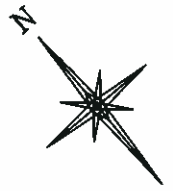
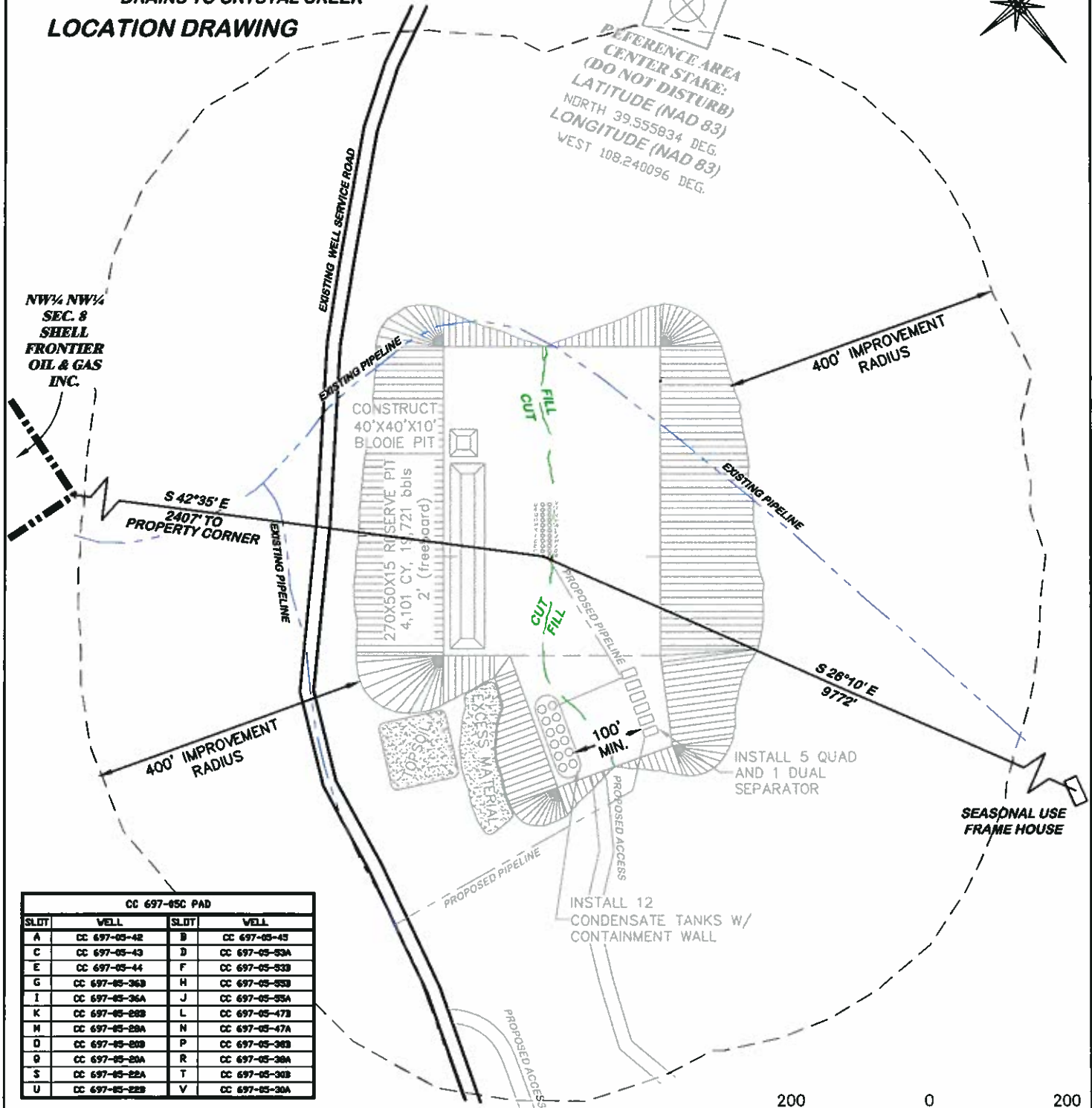


UNGRADED ELEVATION: 8428.8'  
 FINISHED ELEVATION: 8423.2'  
 PROPOSED AREA OF DISTURBANCE: 9.5± ACRES  
 DRAINS TO CRYSTAL CREEK  
**LOCATION DRAWING**



REFERENCE AREA  
 CENTER STAKE:  
 (DO NOT DISTURB)  
 LATITUDE (NAD 83)  
 NORTH 39.555834 DEG.  
 LONGITUDE (NAD 83)  
 WEST 108.240096 DEG.



CC 697-05C PAD			
SLDT	WELL	SLDT	WELL
A	CC 697-05-42	B	CC 697-05-43
C	CC 697-05-43	D	CC 697-05-93A
E	CC 697-05-44	F	CC 697-05-93B
G	CC 697-05-36B	H	CC 697-05-93B
I	CC 697-05-36A	J	CC 697-05-93A
K	CC 697-05-28B	L	CC 697-05-47B
M	CC 697-05-28A	N	CC 697-05-47A
O	CC 697-05-20B	P	CC 697-05-38B
Q	CC 697-05-20A	R	CC 697-05-38A
S	CC 697-05-22A	T	CC 697-05-30B
U	CC 697-05-22B	V	CC 697-05-30A

**BEFORE DIGGING  
 CALL FOR  
 UTILITY LINE LOCATION**

**CC 697-05C PAD**



**DRG** RIFFIN & ASSOCIATES, INC.  
 (307) 382-5028 1414 ELK ST., ROCK SPRINGS, WY 82901

DRAWN: 12/30/10 - DEH	SCALE: 1" = 200'
REVISED: 4/30/11 - DEH	DRG JOB No. 18285
EXPANDED PAD 50'	EXHIBIT 2D

**LOCATION DRAWING**  
**OXY USA WTP LP**  
**CASCADE CREEK 697-05-20A, 20B, 22A, 22B, 28A, 28B, 30A, 30B, 36A, 36B, 38A, 38B, 42, 43, 44, 45, 47A, 47B, 53A, 53B, 55A, 55B, LOT 14, NE1/4, SECTION 5, T. 6 S., R. 97 W., 6th P.M., GARFIELD COUNTY, COLORADO**