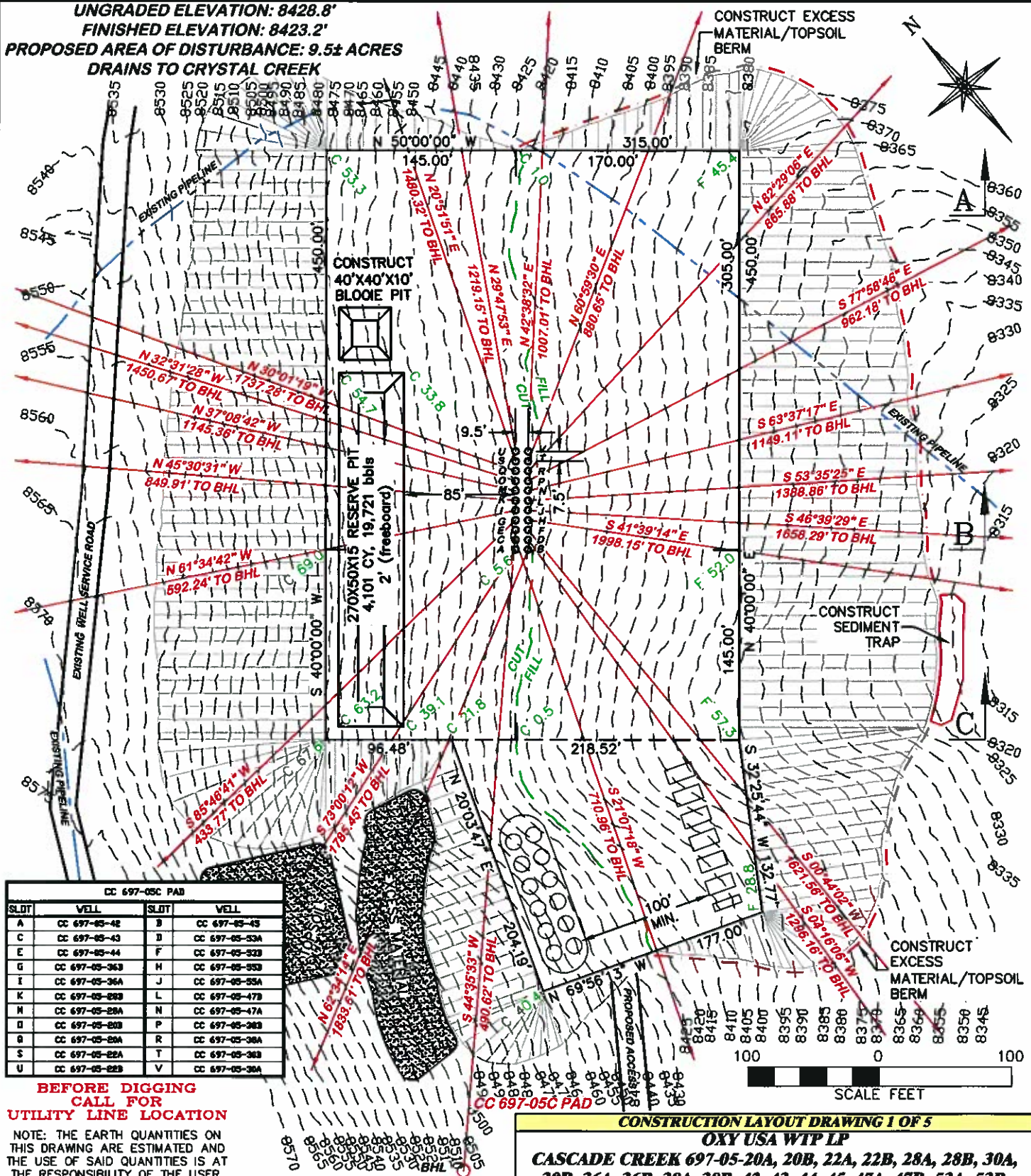


UNGRADED ELEVATION: 8428.8'  
 FINISHED ELEVATION: 8423.2'  
 PROPOSED AREA OF DISTURBANCE: 9.5± ACRES  
 DRAINS TO CRYSTAL CREEK



CC 697-05C PAD			
SLOT	WELL	SLOT	WELL
A	CC 697-05-42	D	CC 697-05-43
C	CC 697-05-43	E	CC 697-05-30A
E	CC 697-05-44	F	CC 697-05-32B
G	CC 697-05-36A	H	CC 697-05-33B
I	CC 697-05-36A	J	CC 697-05-35A
K	CC 697-05-28B	L	CC 697-05-47B
M	CC 697-05-28A	N	CC 697-05-47A
O	CC 697-05-28B	P	CC 697-05-38B
Q	CC 697-05-28A	R	CC 697-05-38A
S	CC 697-05-22A	T	CC 697-05-38B
U	CC 697-05-22B	V	CC 697-05-38A

**BEFORE DIGGING  
 CALL FOR  
 UTILITY LINE LOCATION**  
 NOTE: THE EARTH QUANTITIES ON  
 THIS DRAWING ARE ESTIMATED AND  
 THE USE OF SAID QUANTITIES IS AT  
 THE RESPONSIBILITY OF THE USER.

**CONSTRUCTION LAYOUT DRAWING 1 OF 5**  
**OXY USA WIP LP**  
**CASCADE CREEK 697-05-20A, 20B, 22A, 22B, 28A, 28B, 30A,**  
**30B, 36A, 36B, 38A, 38B, 42, 43, 44, 45, 47A, 47B, 53A, 53B,**  
**55A, 55B, LOT 14, NE1/4,**  
**SECTION 5, T. 6 S., R. 97 W., 6th P.M.,**  
**GARFIELD COUNTY, COLORADO**

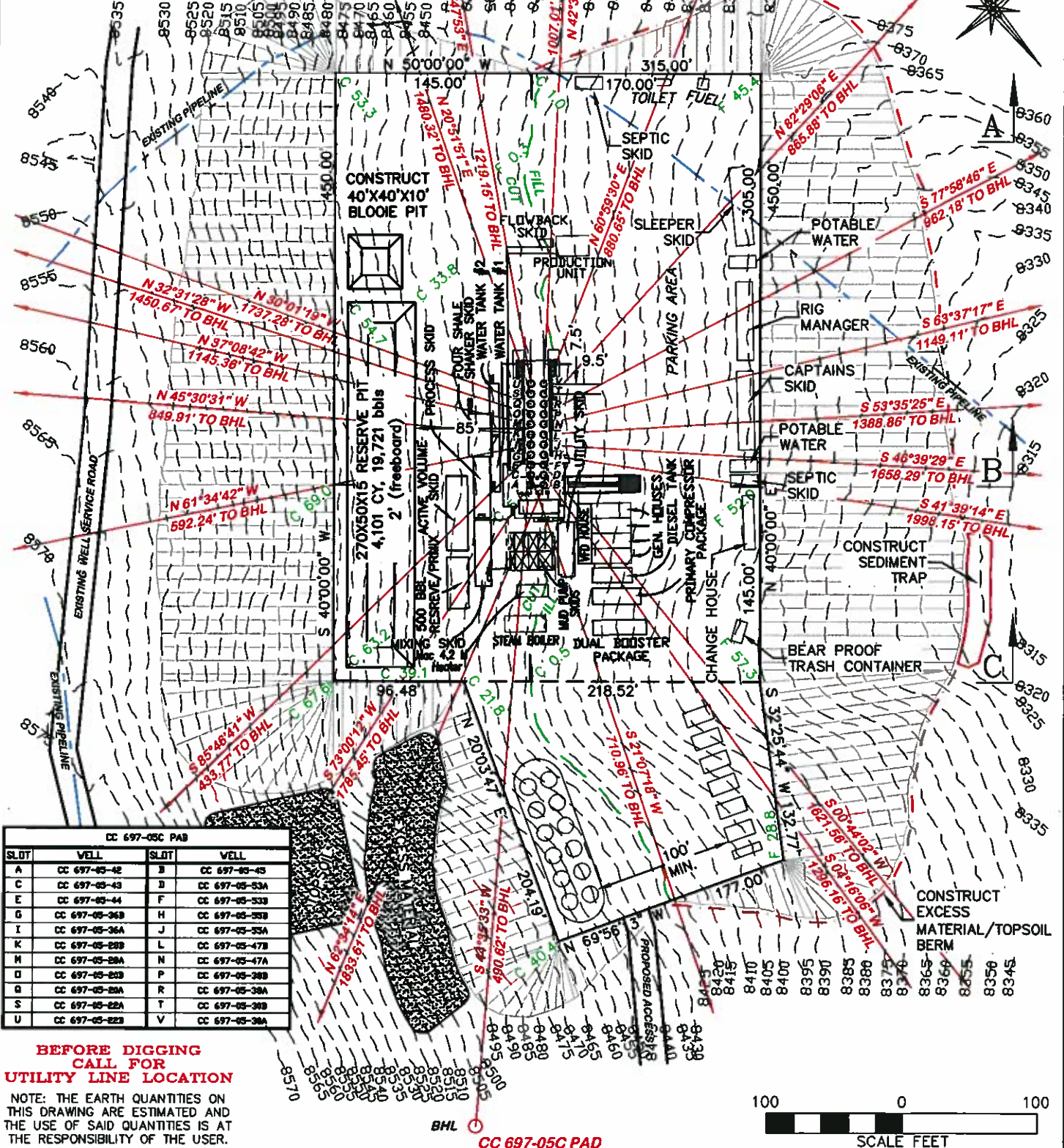
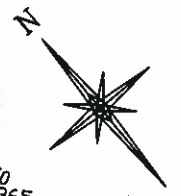
ESTIMATED EARTHWORK				
ITEM	CUT	FILL	TOPSOIL	EXCESS
PAD	170,871 CY	165,271 CY	3,226 CY	2,374 CY
PIT	4,101 CY			4,101 CY
<b>TOTALS</b>	<b>174,972 CY</b>	<b>165,271 CY</b>	<b>3,226 CY</b>	<b>6,475 CY</b>

**DRG RIFFIN & ASSOCIATES, INC.**  
 1414 ELK ST., ROCK SPRINGS, WY 82901  
 (307) 362-5028

DRAWN: 12/30/10 - DEH  
 REVISD: 4/30/11 - DEH  
 EXPANDED PAD 50'  
 SCALE: 1" = 100'  
 DRG JOB No. 18285  
 EXHIBIT 2

UNGRADED ELEVATION: 8428.8'  
 FINISHED ELEVATION: 8423.2'  
 PROPOSED AREA OF DISTURBANCE: 9.5± ACRES  
 DRAINS TO CRYSTAL CREEK

CONSTRUCT EXCESS -  
 MATERIAL/TOPSOIL  
 BERM



CC 697-05C PAD			
SLOT	WELL	SLOT	WELL
A	CC 697-05-42	B	CC 697-05-43
C	CC 697-05-43	D	CC 697-05-53A
E	CC 697-05-44	F	CC 697-05-53B
G	CC 697-05-26B	H	CC 697-05-53C
I	CC 697-05-26A	J	CC 697-05-25A
K	CC 697-05-25B	L	CC 697-05-47B
M	CC 697-05-28A	N	CC 697-05-47A
O	CC 697-05-28B	P	CC 697-05-28B
Q	CC 697-05-28A	R	CC 697-05-28A
S	CC 697-05-22A	T	CC 697-05-28B
U	CC 697-05-22B	V	CC 697-05-28A

**BEFORE DIGGING  
 CALL FOR  
 UTILITY LINE LOCATION**

NOTE: THE EARTH QUANTITIES ON  
 THIS DRAWING ARE ESTIMATED AND  
 THE USE OF SAID QUANTITIES IS AT  
 THE RESPONSIBILITY OF THE USER.

**CONSTRUCTION LAYOUT DRAWING 2 OF 5**

**RIG LAYOUT  
 OXY USA WTP LP  
 CASCADE CREEK 697-05-20A, 20B, 22A, 22B, 28A, 28B, 30A,  
 30B, 36A, 36B, 38A, 38B, 42, 43, 44, 45, 47A, 47B, 53A, 53B,  
 55A, 55B, LOT 14, NE1/4,  
 SECTION 5, T. 6 S., R. 97 W., 6th P.M.,  
 GARFIELD COUNTY, COLORADO**

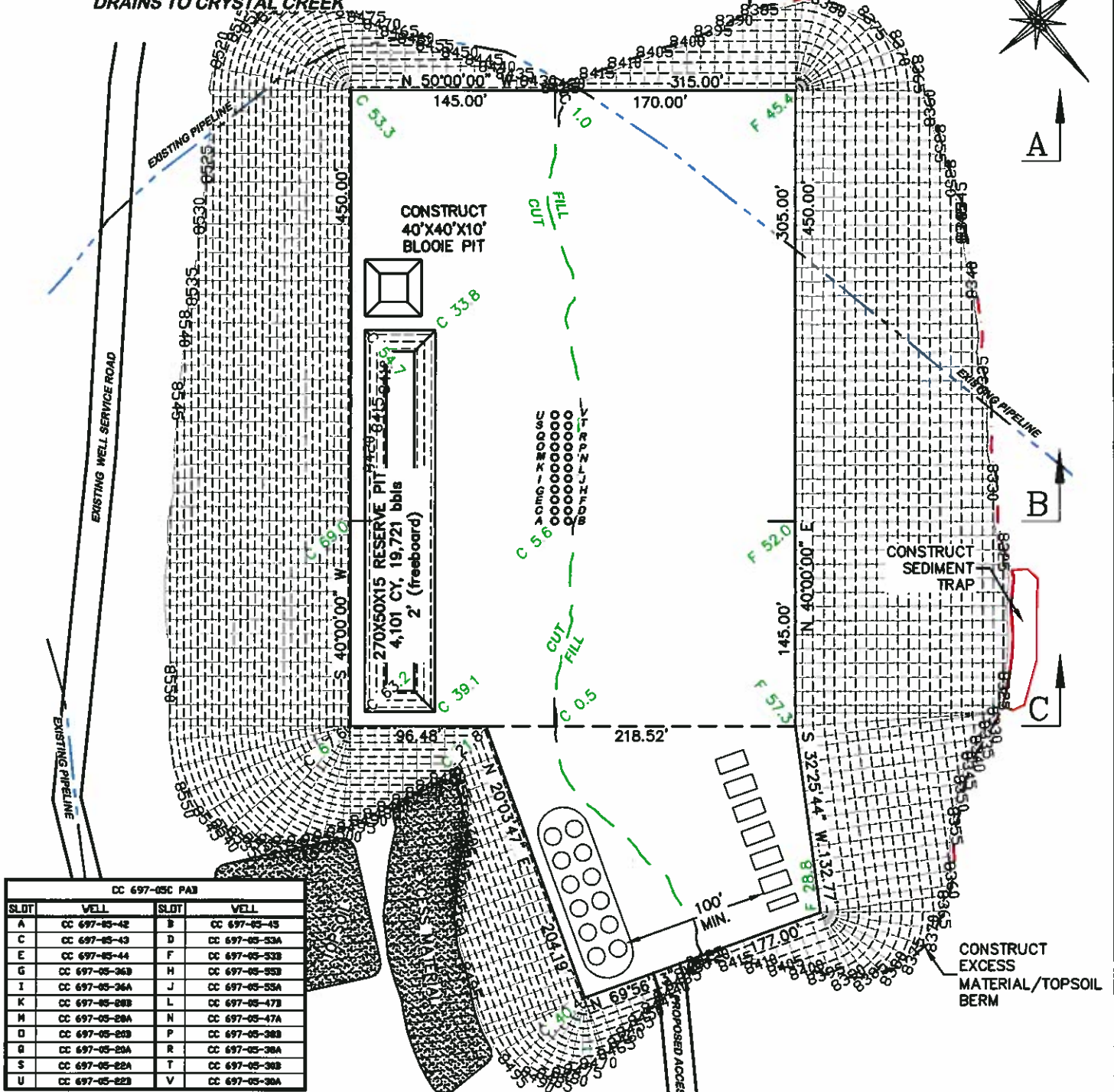
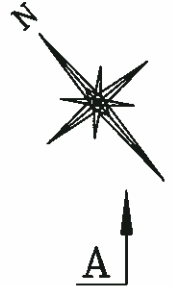
**DRG RIFFIN & ASSOCIATES, INC.**  
 (307) 362-5028 1414 ELK ST., ROCK SPRINGS, WY 82901

DRAWN: 12/30/10 - DEH	SCALE: 1" = 100'
REVISED: 4/30/11 - DEH	DRG JOB No. 18285
EXPANDED PAD 50'	EXHIBIT 2A

UNGRADED ELEVATION: 8428.8'  
 FINISHED ELEVATION: 8423.2'  
 PROPOSED AREA OF DISTURBANCE: 9.5± ACRES  
 DRAINS TO CRYSTAL CREEK

**DESIGN CONTOURS**

CONSTRUCT EXCESS MATERIAL/TOPSOIL BERM



CC 697-05C PAD

SLOT	VELL	SLOT	VELL
A	CC 697-05-42	B	CC 697-05-43
C	CC 697-05-43	D	CC 697-05-53A
E	CC 697-05-44	F	CC 697-05-53B
G	CC 697-05-36B	H	CC 697-05-53B
I	CC 697-05-36A	J	CC 697-05-55A
K	CC 697-05-28B	L	CC 697-05-47B
M	CC 697-05-28A	N	CC 697-05-47A
O	CC 697-05-23B	P	CC 697-05-38B
Q	CC 697-05-23A	R	CC 697-05-38A
S	CC 697-05-22A	T	CC 697-05-38B
U	CC 697-05-22B	V	CC 697-05-38A

**BEFORE DIGGING  
 CALL FOR  
 UTILITY LINE LOCATION**

NOTE: THE EARTH QUANTITIES ON THIS DRAWING ARE ESTIMATED AND THE USE OF SAID QUANTITIES IS AT THE RESPONSIBILITY OF THE USER.

CC 697-05C PAD



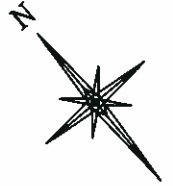
**DRG RIFFIN & ASSOCIATES, INC.**  
 (307) 362-5028 1414 ELK ST., ROCK SPRINGS, WY 82901

DRAWN: 12/30/10 - DEH	SCALE: 1" = 100'
REVISED: 4/30/11 - DEH	DRG JOB No. 18285
EXPANDED PAD 50'	EXHIBIT 2B

**CONSTRUCTION LAYOUT DRAWING 3 OF 5**  
**DESIGN CONTOURS**  
 OXY USA WTP LP  
 CASCADE CREEK 697-05-20A, 20B, 22A, 22B, 28A, 28B, 30A, 30B, 36A, 36B, 38A, 38B, 42, 43, 44, 45, 47A, 47B, 53A, 53B, 55A, 55B, LOT 14, NE1/4, SECTION 5, T. 6 S., R. 97 W., 6th P.M., GARFIELD COUNTY, COLORADO

UNGRADED ELEVATION: 8428.8'  
 FINISHED ELEVATION: 8423.2'  
 PROPOSED AREA OF DISTURBANCE: 9.5± ACRES  
 DRAINS TO CRYSTAL CREEK

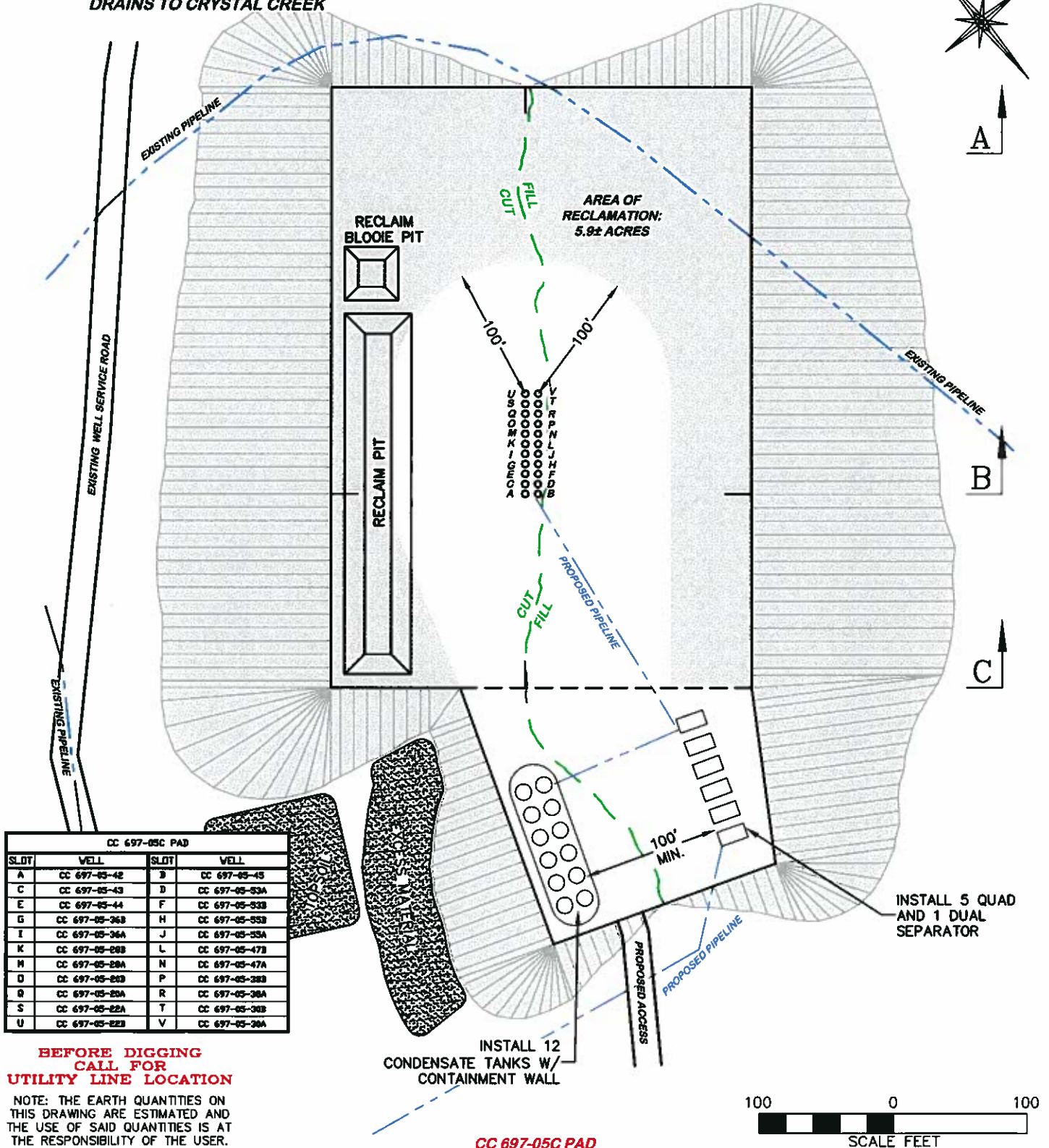
**PROPOSED RECLAMATION**



A

B

C



CC 697-05C PAD			
SLOT	WELL	SLOT	WELL
A	CC 697-05-42	B	CC 697-05-45
C	CC 697-05-43	D	CC 697-05-53A
E	CC 697-05-44	F	CC 697-05-53B
G	CC 697-05-36B	H	CC 697-05-55B
I	CC 697-05-36A	J	CC 697-05-55A
K	CC 697-05-28B	L	CC 697-05-47B
H	CC 697-05-28A	N	CC 697-05-47A
D	CC 697-05-22B	P	CC 697-05-38B
Q	CC 697-05-25A	R	CC 697-05-38A
S	CC 697-05-22A	T	CC 697-05-38B
U	CC 697-05-22B	V	CC 697-05-28A

**BEFORE DIGGING  
 CALL FOR  
 UTILITY LINE LOCATION**  
 NOTE: THE EARTH QUANTITIES ON  
 THIS DRAWING ARE ESTIMATED AND  
 THE USE OF SAID QUANTITIES IS AT  
 THE RESPONSIBILITY OF THE USER.

INSTALL 12  
 CONDENSATE TANKS W/  
 CONTAINMENT WALL

INSTALL 5 QUAD  
 AND 1 DUAL  
 SEPARATOR



CC 697-05C PAD

**DRG RIFFIN & ASSOCIATES, INC.**  
 (307) 362-5028 1414 ELK ST., ROCK SPRINGS, WY 82901

DRAWN: 12/30/10 - DEH	SCALE: 1" = 100'
REVISED: 4/30/11 - DEH	DRG JOB No. 18285
EXPANDED PAD 50'	EXHIBIT 2C

**CONSTRUCTION LAYOUT DRAWING 4 OF 5**  
**PROPOSED RECLAMATION**  
**OXY USA WTP LP**  
 CASCADE CREEK 697-05-20A, 20B, 22A, 22B, 28A, 28B, 30A,  
 30B, 36A, 36B, 38A, 38B, 42, 43, 44, 45, 47A, 47B, 53A, 53B,  
 55A, 55B, LOT 14, NE1/4,  
 SECTION 5, T. 6 S., R. 97 W., 6th P.M.,  
 GARFIELD COUNTY, COLORADO