

The Road to Excellence Starts with Safety

Sold To #: 345114	Ship To #: 345114	Quote #:	Sales Order #: 8015082
Customer: SAMSON RESOURCES CORP - EBUS	Customer Rep:		
Well Name: Ignacio	Well #: 32-7-23 #5	API/UWI #: 05067098370000	
Field: IGNACIO BLANCO	City (SAP): TULSA	County/Parish: La Plata	State: Colorado
Legal Description: Section 23 Township 32N Range 7W			
Contractor: AZTEC WELL SERVICE	Rig/Platform Name/Num: AWS 507		
Job Purpose: Cement Surface Casing			
Well Type: Development Well	Job Type: Cement Surface Casing		
Sales Person: SCOTT, KYLE	Srv Supervisor: KUKUS, CRAIG	MBU ID Emp #: 369124	

Job Personnel

HES Emp Name	Exp Hrs	Emp #	HES Emp Name	Exp Hrs	Emp #	HES Emp Name	Exp Hrs	Emp #
DOBBS, CHAD A	4	275043	JONES, DAVID Michael	0	409749	KUKUS, CRAIG A	4	369124
MILLER, DAVID A	4	484499						

Equipment

HES Unit #	Distance-1 way	HES Unit #	Distance-1 way	HES Unit #	Distance-1 way	HES Unit #	Distance-1 way
10025104	50 mile	10741123	50 mile	11223557	50 mile		

Job Hours

Date	On Location Hours	Operating Hours	Date	On Location Hours	Operating Hours	Date	On Location Hours	Operating Hours
3/5/11	4	1.5						

TOTAL Total is the sum of each column separately

Job

Job Times

Formation Name	Top	Bottom	Called Out	Date	Time	Time Zone
Formation Depth (MD)			On Location	05 - Mar - 2011	07:30	MST
Form Type		BHST	Job Started	05 - Mar - 2011	12:00	MST
Job depth MD	371. ft	Job Depth TVD	Job Started	05 - Mar - 2011	14:25	MST
Water Depth		Wk Ht Above Floor	Job Completed	05 - Mar - 2011	14:53	MST
Perforation Depth (MD)	From	To	Departed Loc	05 - Mar - 2011	16:10	MST

Well Data

Description	New / Used	Max pressure psig	Size in	ID in	Weight lbm/ft	Thread	Grade	Top MD ft	Bottom MD ft	Top TVD ft	Bottom TVD ft
12-1/4" Open Hole				12.25					350.		
8-5/8" Surface Casing	Unknown		8.625	8.097	24.		J-55		350.		

Sales/Rental/3rd Party (HES)

Description	Qty	Qty uom	Depth	Supplier
PLUG, CMTG, TOP, 8 5/8, HWE, 7.20 MIN/8.09 MA	1	EA		
SUGAR, GRANULATED, IMPERIAL	100	LB		

Tools and Accessories

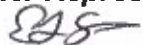
Type	Size	Qty	Make	Depth	Type	Size	Qty	Make	Depth	Type	Size	Qty	Make
Guide Shoe					Packer					Top Plug	8.625	1	HES
Float Shoe					Bridge Plug					Bottom Plug			
Float Collar					Retainer					SSR plug set			
Insert Float										Plug Container	8.625	1	HES
Stage Tool										Centralizers			

Miscellaneous Materials

Gelling Agt	Conc	Surfactant	Conc	Acid Type	Qty	Conc	%
Treatment Fld	Conc	Inhibitor	Conc	Sand Type	Size	Qty	

Fluid Data

Stage/Plug #: 1

Fluid #	Stage Type	Fluid Name	Qty	Qty uom	Mixing Density lbm/gal	Yield ft ³ /sk	Mix Fluid Gal/sk	Rate bbl/min	Total Mix Fluid Gal/sk
1	Water Spacer		0.00	bbl	8.33	.0	.0	.0	
2	Surface Cement	CMT - PREMIUM - CLASS G, 94 LB SK (100003685)	265.0	sacks	15.8	1.17	5.0		5.0
	94 lbm	CMT - PREMIUM - CLASS G REG OR TYPE V, BULK (100003685)							
	2 %	CALCIUM CHLORIDE - HI TEST PELLET (100005053)							
	0.125 lbm	POLY-E-FLAKE (101216940)							
	4.998 Gal	FRESH WATER							
3	Displacement		0.00	bbl	8.33	.0	.0	.0	
Calculated Values		Pressures		Volumes					
Displacement	21	Shut In: Instant		Lost Returns	0	Cement Slurry	55.2	Pad	
Top Of Cement	SURFACE	5 Min		Cement Returns	63	Actual Displacement	21	Treatment	
Frac Gradient		15 Min		Spacers	10	Load and Breakdown		Total Job	86
Rates									
Circulating		Mixing	6	Displacement	5	Avg. Job			5.5
Cement Left In Pipe	Amount	42.28ft	Reason	Shoe Joint					
Frac Ring # 1 @	ID	Frac ring # 2 @	ID	Frac Ring # 3 @	ID	Frac Ring # 4 @	ID		
The Information Stated Herein Is Correct				Customer Representative Signature 					

The Road to Excellence Starts with Safety

Sold To #: 345114	Ship To #: 345114	Quote #:	Sales Order #: 8015082
Customer: SAMSON RESOURCES CORP - EBUS	Customer Rep:		
Well Name: Ignacio	Well #: 32-7-23 #5	API/UWI #: 05067098370000	
Field: IGNACIO BLANCO	City (SAP): TULSA	County/Parish: La Plata	State: Colorado
Legal Description: Section 23 Township 32N Range 7W			
Lat: N 0 deg. OR N 0 deg. 0 min. 0 secs.	Long: E 0 deg. OR E 0 deg. 0 min. 0 secs.		
Contractor: AZTEC WELL SERVICE	Rig/Platform Name/Num: AWS 507		
Job Purpose: Cement Surface Casing	Ticket Amount:		
Well Type: Development Well	Job Type: Cement Surface Casing		
Sales Person: SCOTT, KYLE	Srvc Supervisor: KUKUS, CRAIG	MBU ID Emp #: 369124	

Activity Description	Date/Time	Cht #	Rate bbl/ min	Volume bbl		Pressure psig		Comments
				Stage	Total	Tubing	Casing	
Call Out	03/05/2011 07:30							
Depart Yard Safety Meeting	03/05/2011 10:00							SAFETY MEETING INVOLVING THE ENTIRE CMT CREW
Arrive At Loc	03/05/2011 12:12							LOCATION DRY/SMALL LOCATION/RIG WAS RUNNING CSG
Assessment Of Location Safety Meeting	03/05/2011 12:20							ASSESSMENT OF LOCATION INVOLVING THE ENTIRE CMT CREW
Pre-Rig Up Safety Meeting	03/05/2011 12:45							SAFETY MEETING INVOLVING THE ENTIRE CMT CREW
Rig-Up Equipment	03/05/2011 13:00							FOLLOWING JSA SAFETY MEETING
Circulate Well	03/05/2011 13:30							RIG CIRCULATED WELL
Pre-Job Safety Meeting	03/05/2011 14:10							SAFETY MEETING INVOLVING EVERYONE ON LOCATION
Start Job	03/05/2011 14:25							T.D 371 FT T.P 365 FT S.J 42.28 FT OH 12 1/4 IN PIPE 8 5/8 24# J-55 MUD WT 9.0
Other	03/05/2011 14:25		2	2			41.0	FILL LINES
Pressure Test	03/05/2011 14:27		0.5			2500. 0		PRESSURE TEST GOOD
Pump Spacer 1	03/05/2011 14:30		5.5	10			93.0	FRESH WATER SPACER
Activity Description	Date/Time	Cht #	Rate bbl/ min	Volume bbl		Pressure psig		Comments
				Stage	Total	Tubing	Casing	

Sold To #: 345114 Ship To #: 345114 Quote #: Sales Order #: 8015082

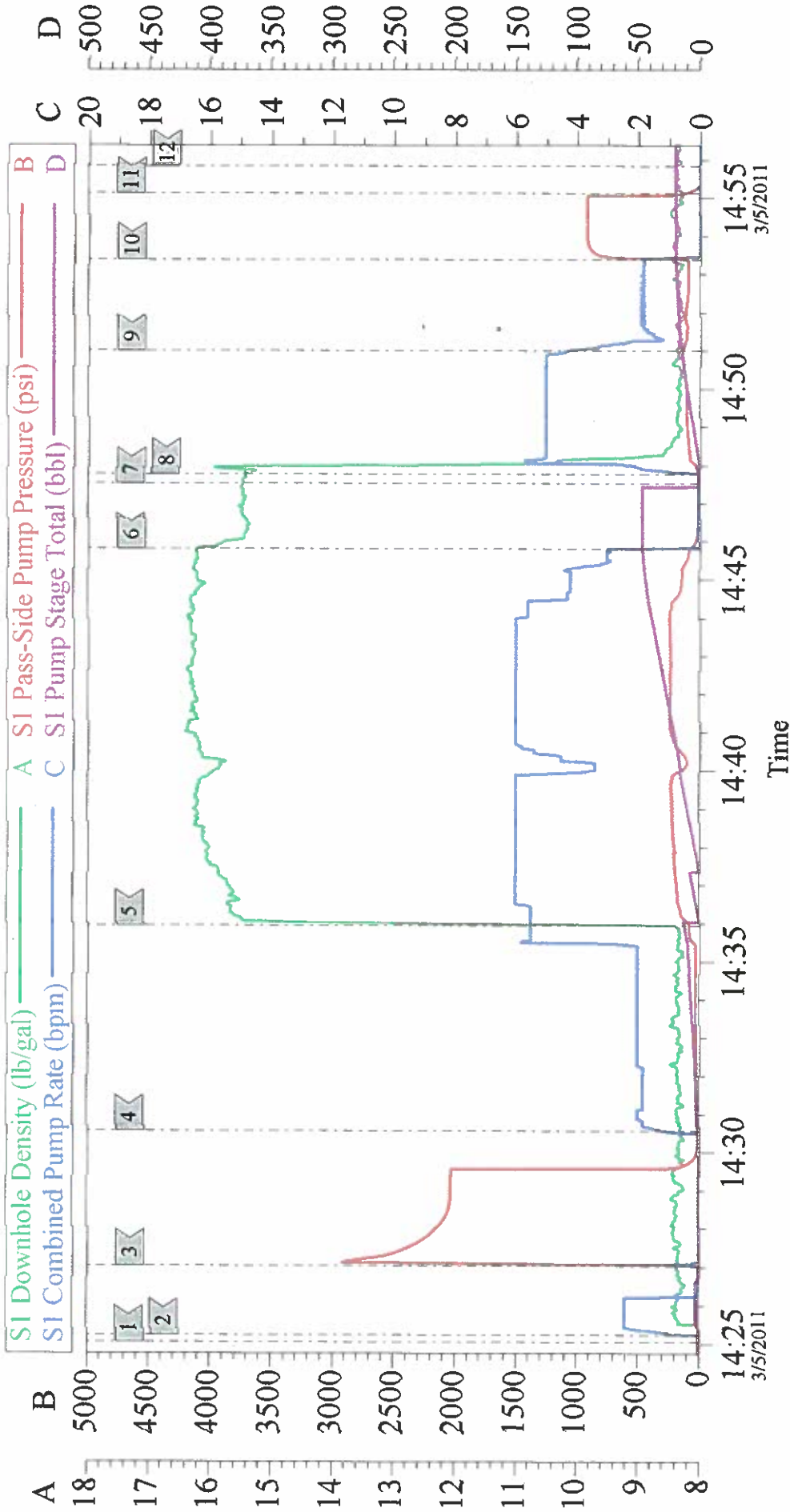
SUMMIT Version: 7.20.130

Saturday, March 05, 2011 03:51:00

Cementing Job Log

Pump Cement	03/05/2011 14:35		6	55			236.0	PUMP 265 SKS SURFACE CEMENT AT 15.8 PPG 1.17 Y 5.0 GAL/SK
Shutdown	03/05/2011 14:45							SWAP VALVES OVER
Drop Top Plug	03/05/2011 14:47							PLUG LEFT THE PLUG CONTAINER
Pump Displacement	03/05/2011 14:47		5	20.6			260.0	PUMP FRESH WATER DISPLACEMENT
Slow Rate	03/05/2011 14:51		2	15			126.0	SLOW RATE LAST 5 BBLs
Bump Plug	03/05/2011 14:53		2	20.6			912.0	PLUG LANDED AT 126 PSI
Check Floats	03/05/2011 14:55							FLOATS HELD GOT 1/4 BBL BACK TO TANKS/HAD GOOD CIRCULATION THRU OUT THE JOB
End Job	03/05/2011 14:55							GOT CMT BACK TO SURFACE 63 BBLs
Pre-Rig Down Safety Meeting	03/05/2011 15:00							SAFETY MEETING INVOLVING THE ENTIRE CMT CREW
Rig-Down Equipment	03/05/2011 15:10							
Safety Meeting - Departing Location	03/05/2011 16:00							SAFETY MEETING INVOLVING THE ENTIRE CMT CREW
Comment	03/05/2011 16:10							THANK YOU FOR USING HALLIBURTON, CRAIG KUKUS AND CREW

SAMSON SURFACE



Local Event Log			
1 START JOB	14:25:03	2 PRIME LINES	14:25:14
4 PUMP H2O SPACER	14:30:34	5 PUMP CEMENT	14:35:57
7 DROP PLUG	14:47:31	8 PUMP H2O DISPLACEMENT	14:47:45
10 BUMP PLUG	14:53:23	11 CHECK FLOATS	14:55:07
		3 PRESSURE TEST	14:27:02
		6 SHUT DOWN	14:45:49
		9 SLOW RATE	14:51:00
		12 END JOB	14:55:50

Customer: SAMSON	Job Date: 05-Mar-2011	Sales Order #: 8015082
Well Description: IGNACIO 32-7-23 #5	Job Type: SURFACE	ADC Used: YES
Company Rep: EARI, SKAGGS	Cement Supervisor: CRAIG KUKUS	Elite #/Operator: RED TIGER CHHAD DOBBS