

DALEY LAND SURVEYING, INC.

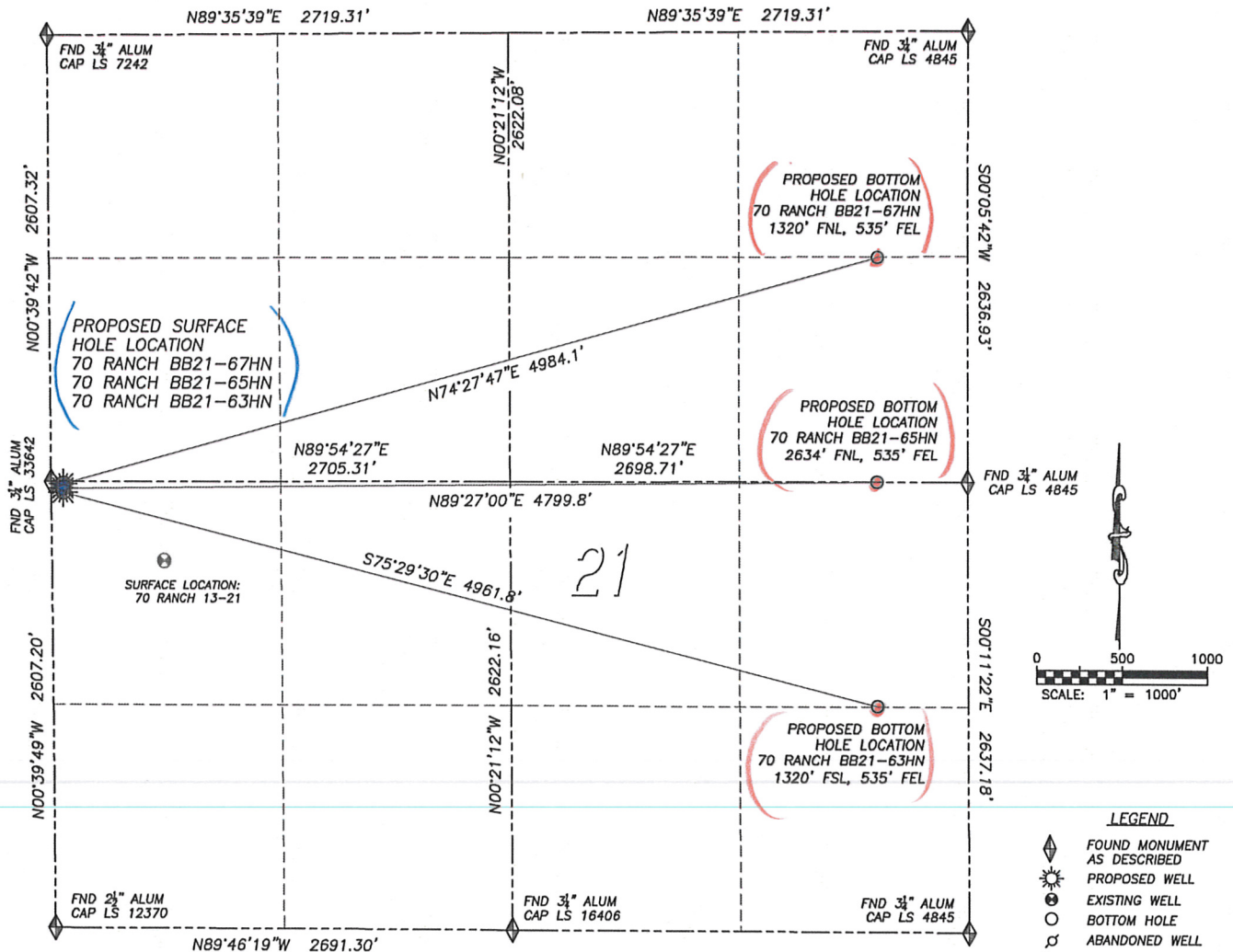
PARKER, CO. 80134

303 953 9841

MULTI-WELL PLAN DIRECTIONAL LAYOUT

70 RANCH BB21-67HN, 65HN & 63HN

SECTION 21, TOWNSHIP 5 NORTH, RANGE 63 WEST OF THE 6TH PRINCIPAL MERIDIAN

**NAD 83 LATITUDE AND LONGITUDE**

70 RANCH BB21-67HN SURFACE HOLE:

LATITUDE: N40.38487°
 LONGITUDE: W104.45030°
 ELEVATION: 4613'
 FOOTAGE: 2594' FSL, 69' FWL
 PDOP: 1.8
 QTR/QTR: NW4/SW4
 PROP LINE: 69' WEST

BOTTOM HOLE:

LATITUDE: N40.38854°
 LONGITUDE: W104.43307°
 FOOTAGE: 1320' FNL, 535' FEL

NEAREST EXISTING WELL:

70 RANCH 13-21 SURFACE HOLE
 LATITUDE: N40.38364°
 LONGITUDE: W104.44815°
 ELEVATION: 4592'
 748' SOUTHEAST

NAD 83 LATITUDE AND LONGITUDE

70 RANCH BB21-65HN SURFACE HOLE:

LATITUDE: N40.38480°
 LONGITUDE: W104.45030°
 ELEVATION: 4612'
 FOOTAGE: 2569' FSL, 69' FWL
 PDOP: 1.8
 QTR/QTR: NW4/SW4
 PROP LINE: 69' WEST

BOTTOM HOLE:

LATITUDE: N40.38493°
 LONGITUDE: W104.43308°
 FOOTAGE: 2634' FNL, 535' FEL

NEAREST EXISTING WELL:

70 RANCH 13-21 SURFACE HOLE
 LATITUDE: N40.38364°
 LONGITUDE: W104.44815°
 ELEVATION: 4592'
 733' SOUTHEAST

NAD 83 LATITUDE AND LONGITUDE

70 RANCH BB21-63HN SURFACE HOLE:

LATITUDE: N40.38473°
 LONGITUDE: W104.45030°
 ELEVATION: 4612'
 FOOTAGE: 2544' FSL, 69' FWL
 PDOP: 1.7
 QTR/QTR: NW4/SW4
 PROP LINE: 69' WEST

BOTTOM HOLE:

LATITUDE: N40.38132°
 LONGITUDE: W104.43306°
 FOOTAGE: 1320' FSL, 535' FEL

NEAREST EXISTING WELL:

70 RANCH 13-21 SURFACE HOLE
 LATITUDE: N40.38364°
 LONGITUDE: W104.44815°
 ELEVATION: 4592'
 719' SOUTHEAST

DALEY LAND SURVEYING, INC.

PARKER, CO. 80134

303 953 9841

MULTI-WELL PLAN LOCATION DRAWING
70 RANCH BB21-67HN, 65HN & 63HN

SECTION 21, TOWNSHIP 5 NORTH, RANGE 63 WEST OF THE 6TH PRINCIPAL MERIDIAN

