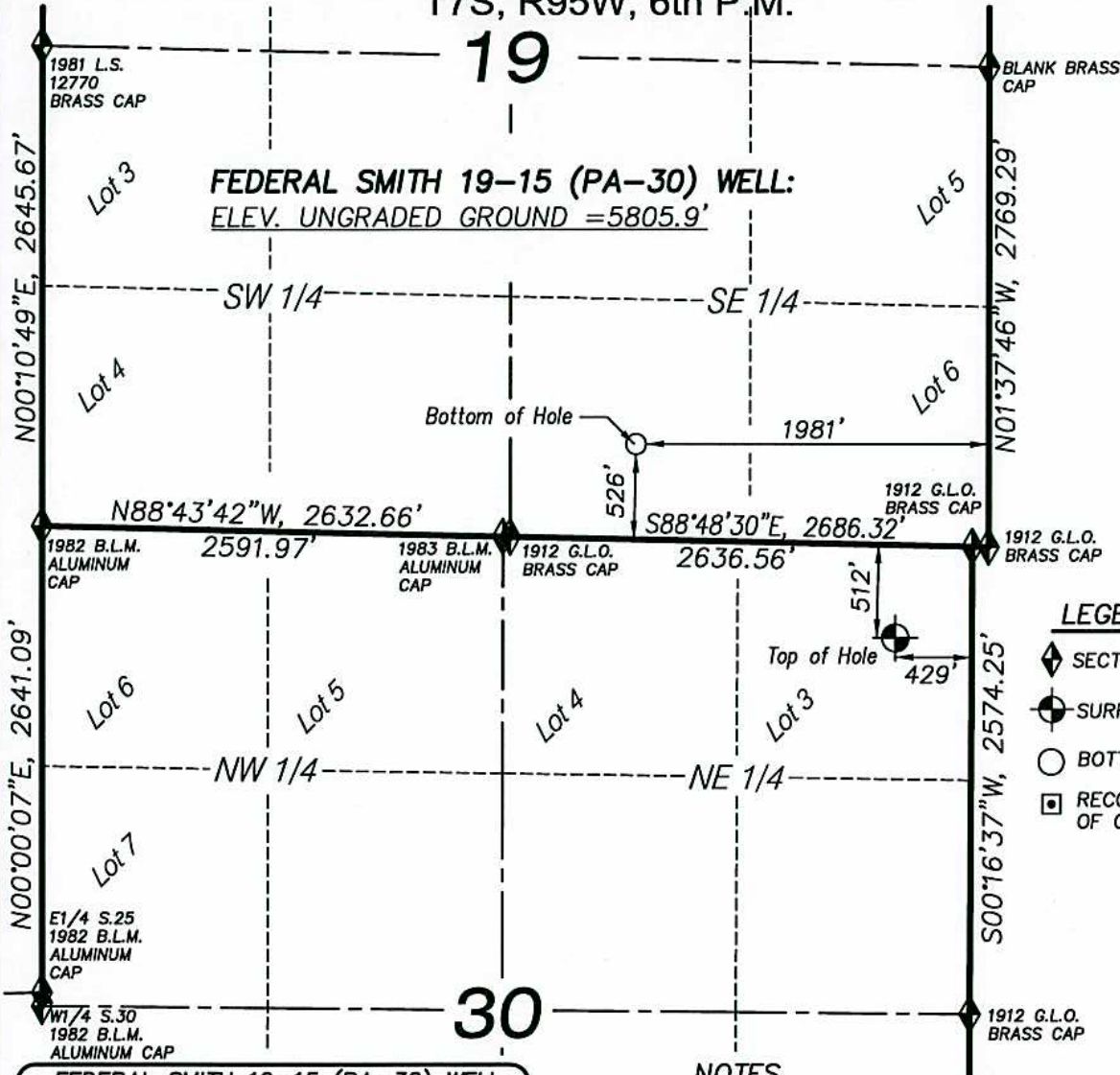
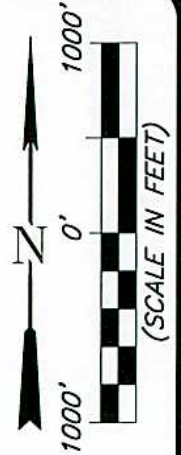


T7S, R95W, 6th P.M.

19



- LEGEND**
- ◆ SECTION CORNER LOCATED
  - SURFACE LOCATION
  - BOTTOM HOLE LOCATION
  - ▣ RECORD LOCATION OF CORNER

**FEDERAL SMITH 19-15 (PA-30) WELL**  
 (WELLHEAD LOCATION) NAD 83  
 LATITUDE = 39.41422° N  
 LONGITUDE = 108.03173° W  
 (BOTTOM HOLE LOCATION) NAD 83  
 LATITUDE = 39.41713° N  
 LONGITUDE = 108.03697° W

**CERTIFICATE OF SURVEYOR**  
 I, TED TAGGART OF FRUITA, COLORADO HEREBY CERTIFY THAT THIS MAP WAS MADE FROM NOTES TAKEN DURING AN ACTUAL SURVEY MADE BY ME OR UNDER MY DIRECTION FOR ENCANA OIL & GAS (USA) INC. AND THAT THIS LOCATION HAS BEEN STAKED ON THE GROUND AS SHOWN HEREON.



906 Main Street  
 Evanston, Wyoming 82930  
 Phone No. (307) 789-4545

- NOTES**
1. WELL FOOTAGES ARE MEASURED AT RIGHT ANGLES TO SECTION LINES.
  2. BASIS OF BEARING: GEODETIC- BASED ON GPS OBSERVATIONS.
  3. ELEVATIONS BASED ON GPS OBSERVATIONS, NAVD 88 (GEOID 03), POST PROCESSED USING NGS OPUS.
  4. THE BOTTOM HOLE BEARS N54°05'55"W, 1823' FROM TOP OF HOLE.
  5. SEE ADDENDUM TO LEGAL PLAT (SHEET 11) FOR VISIBLE IMPROVEMENTS WITHIN 400 FEET OF THE PROPOSED OIL & GAS LOCATION.
  6. CONTROL FOR SURVEY WAS ESTABLISHED USING DIFFERENTIALLY CORRECTED GPS FROM AN OPUS BASED CONTROL NETWORK. WELL LOCATION WAS ESTABLISHED USING NON-GPS CONVENTIONAL METHODS, THEREFORE NO PDOP READING WAS TAKEN.

**MAP to ACCOMPANY**  
 APPLICATION for PERMIT to DRILL  
**EnCana Oil & Gas (USA) Inc.**  
**Federal Smith 19-15 (PA-30) Well**  
 NE1/4 NE1/4 (LOT 3), SECTION 30  
 T7S, R95W, 6th P.M.  
 GARFIELD COUNTY, COLORADO

<b>Location Plat</b>		<b>Scale: 1" = 1000'</b>		<b>SHEET</b>	
Project No.	10-04-15	Date Surveyed:	3/17/10	<b>1h</b>	
Date Drawn:	7/16/10	Latest Revision Date:	3/23/11		
				<b>OF 10</b>	