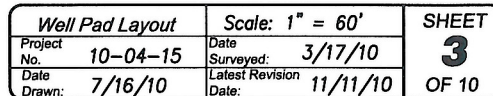
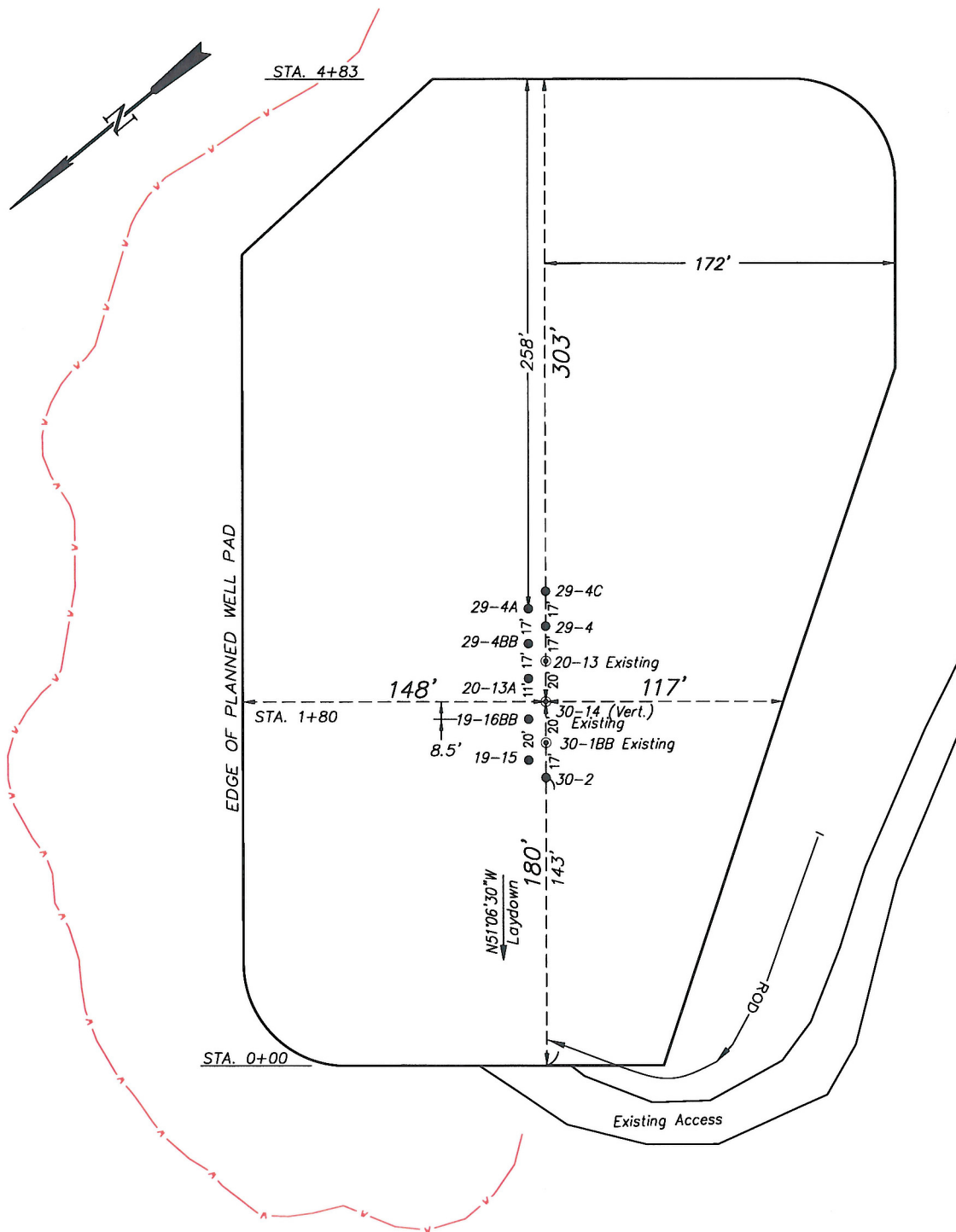


WELL PAD LAYOUT



EnCana Oil & Gas (USA) Inc.
PA-30 Well Pad
 NE1/4 NE1/4, SECTION 30, T7S, R95W, 6th P.M.
 PRE-CONSTRUCTION PLAT



Total Surface Disturbance = 5.23 Acres
 (See Sheet 4 for Details)

- NOTES:**
- (1) Slope Track and/or Terrace at Slopes and Piles
 - (2) Erosion Control & Seed Topsoil
 - (3) Erosion Control & Seed Outside
 - (4) Slope away from Substructure Areas 1% to 3% to Flow Control

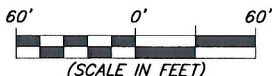
- LEGEND**
- S- = SLASH
 - ST = SEDIMENT TRAP
 - SedR = SEDIMENT RESERVOIR
 - R.O.D. = RUN-ON DIVERSION
 - W- = PERIMETER CONTROL (WATTLES)
 - CSD = CUT SLOPE DIVERSION (BERM TOE OF CUT SLOPE)
 - D = FILL DIVERSION TO SEDIMENT TRAP
 - VGB = VEGETATION BUFFER (UNDISTURBED LAND INSIDE PC)
 - FCD = FLOW CONTROL DITCH
 - PAR = PAD/ACCESS ROAD INTERFACE
 - LEVEL SPREADER
 - TOE BERM (PLACED AT TOE OF ALL FILL SLOPES/STOCKPILES)
 - TOPSOIL BERM
 - SEED, EOB & FLEX
 - SEED

PRE-CONSTRUCTION PHASE COMPLETE,
 AUTHORIZATION TO CONTINUE
 CONSTRUCTION.

SIGNATURE: _____



906 Main Street
 Evanston, Wyoming 82930
 Phone No. (307) 789-4545

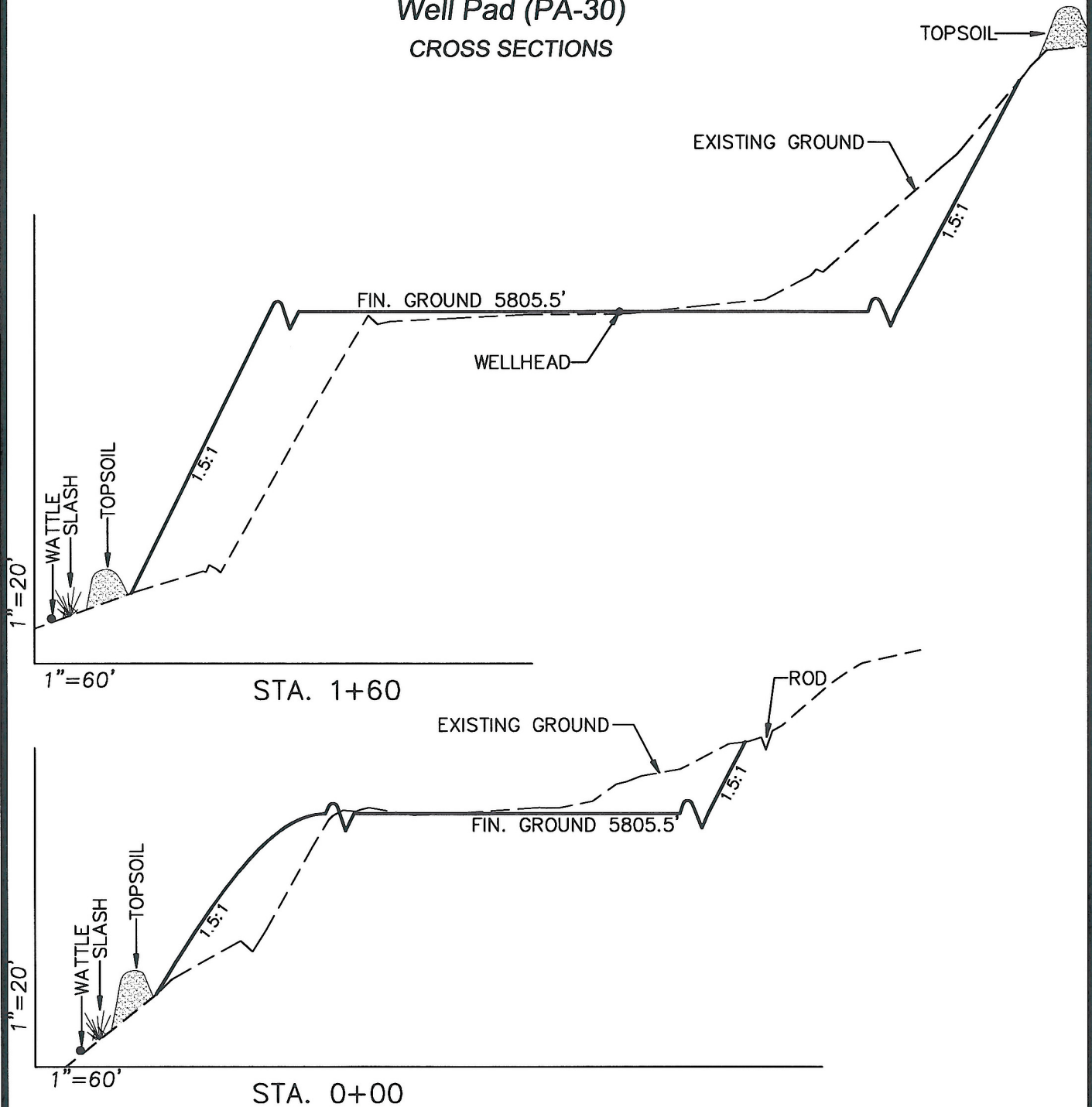


Pre-Construction		Scale: 1" = 60'	SHEET
Project No.	10-04-15	Date Surveyed: 3/17/10	3a OF 10
Date Drawn: 7/16/10		Latest Revision Date:	

EnCana Oil & Gas (USA) Inc.

Well Pad (PA-30)

CROSS SECTIONS



SURFACE DISTURBANCE (IN ACRES)

Well Pad	3.0
Side Slopes	1.2
Topsoil & Waste Material	1.03
TOTAL	5.23

NOTE:
ALL CUT AND FILL
SLOPES ARE AT 1.5:1
UNLESS OTHERWISE
NOTED.

EARTHWORK QUANTITIES

(in Cubic Yards w/ 0% shrink/swell)

ITEM	CUT	FILL	6" TOPSOIL	EXCESS
PAD	21247	21247	Topsoil not included in Excavation	0
PIT	0	0		0
TOTALS	21247	21247	2000	0



906 Main Street
Evanston, Wyoming 82930
Phone No. (307) 789-4545

Cross Sections

Project No. 10-04-15
Date Drawn: 7/16/10

Scale: As Shown

Date Surveyed: 3/17/10
Latest Revision Date:

SHEET

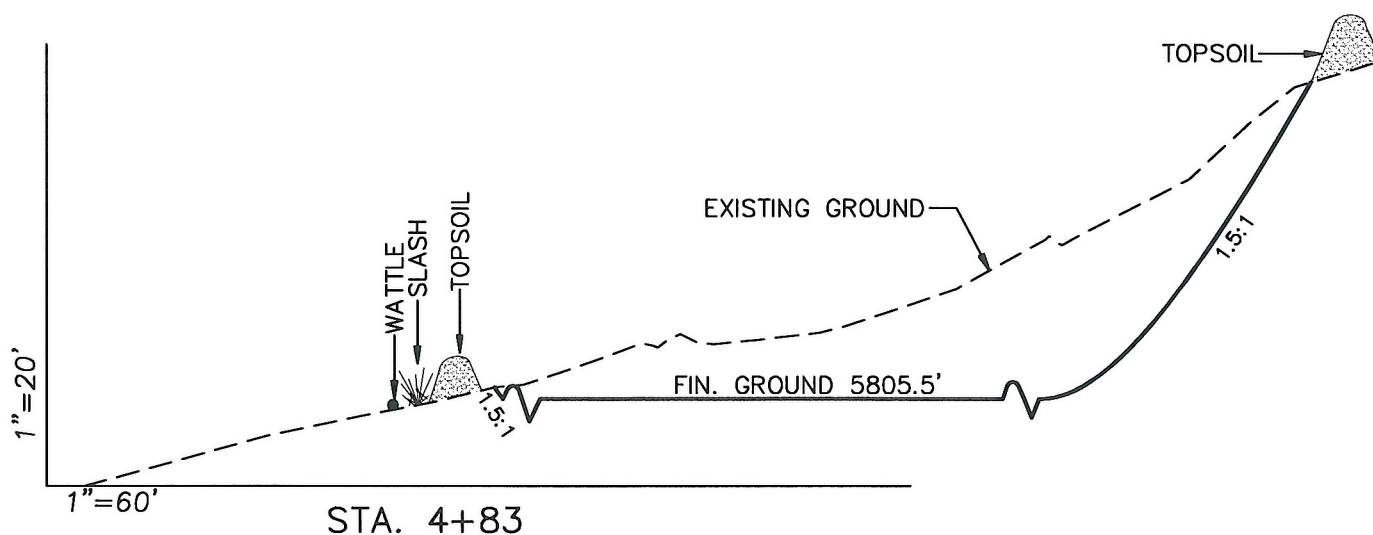
4

OF 10

EnCana Oil & Gas (USA) Inc.

Well Pad (PA-30)

CROSS SECTIONS



SURFACE DISTURBANCE (IN ACRES)

Well Pad	3.0
Side Slopes	1.2
Topsoil & Waste Material	1.03
TOTAL	5.23

NOTE:
ALL CUT AND FILL
SLOPES ARE AT 1.5:1
UNLESS OTHERWISE
NOTED.

EARTHWORK QUANTITIES

(in Cubic Yards w/ 0% shrink/swell)

ITEM	CUT	FILL	6" TOPSOIL	EXCESS
PAD	21247	21247	Topsoil not included in	0
PIT	0	0	Excavation	0
TOTALS	21247	21247	2000	0



906 Main Street
Evanston, Wyoming 82930
Phone No. (307) 789-4545

Cross Sections

Project No. 10-04-15
Date Drawn: 7/16/10

Scale: As Shown

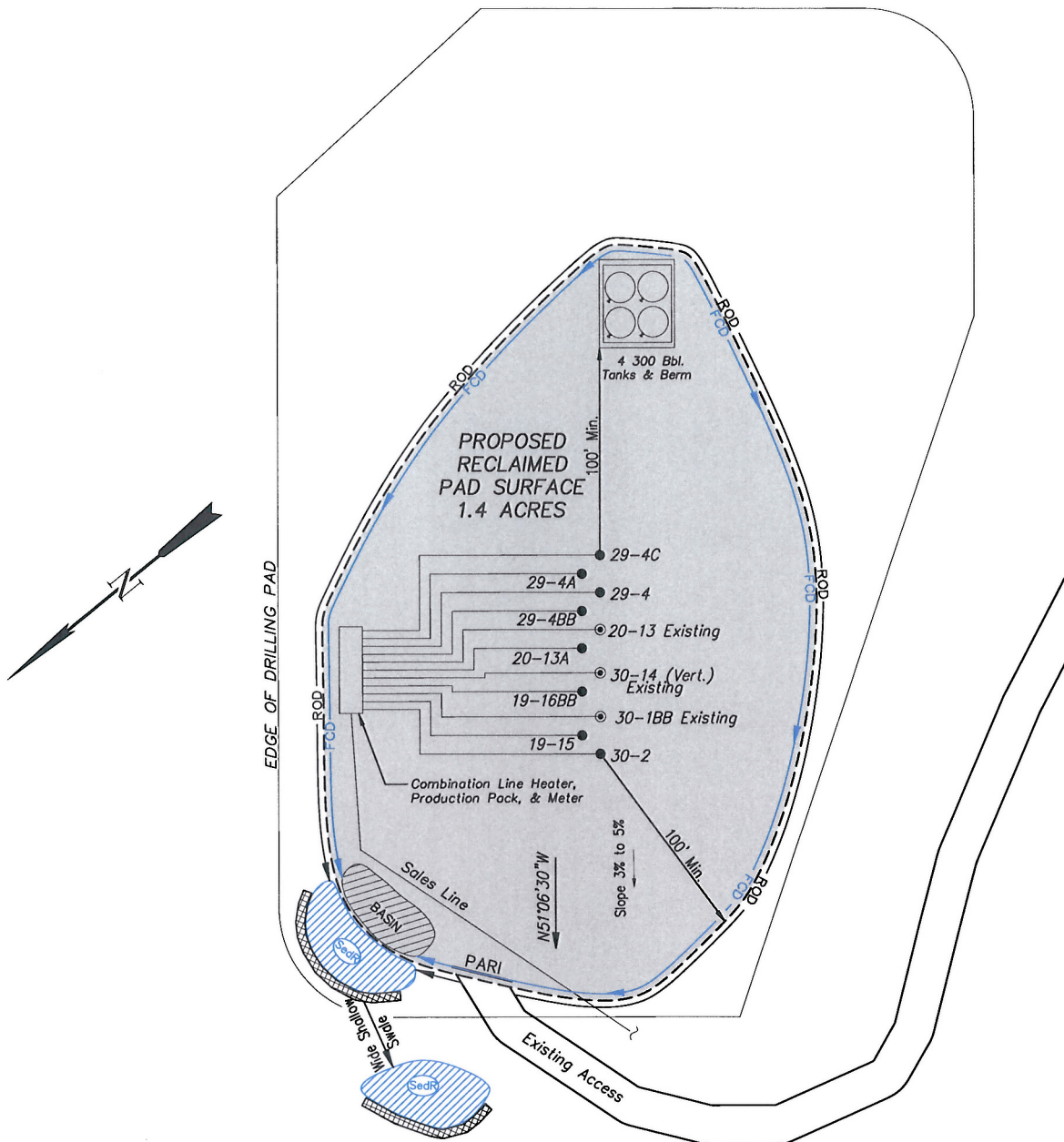
Date Surveyed: 3/17/10
Latest Revision Date:

SHEET

4a

OF 10

EnCana Oil & Gas (USA) Inc.
PA-30 Well Pad
PRODUCTION SCHEMATIC



NOTES:

1. Set Tanks High so pad Entrance & Tank Area Can Drain to Pad Basin
2. Gravel Pad 75' from Wells & Around Tanks and Separators
3. Pad Drains to Pad Basin at a 3% to 5% slope
4. BMP Selection and Position may change Depending on Actual Conditions Encountered During the Construction Process

NOTE:

Actual Equipment Layout and Reclaimed Pad Surface Area May Change due to Production Requirements or Site Conditions.

ESTIMATED AREAS
RECLAIMED AREA: 3.8 ACRES
UNRECLAIMED AREA: 1.4 ACRES

LEGEND

- SL = SLASH
- ST = SEDIMENT TRAP
- SedR = SEDIMENT RESERVOIR
- R.O.D. = RUN-ON DIVERSION
- W = PERIMETER CONTROL (WATTLES)
- CSD = CUT SLOPE DIVERSION (BERM TOE OF CUT SLOPE)
- D = FILL DIVERSION TO SEDIMENT TRAP
- VOB = VEGETATION BUFFER (UNDISTURBED LAND INSIDE PC)
- FCD = FLOW CONTROL DITCH
- PARI = PAD/ACCESS ROAD INTERFACE
- Level Spreader
- TOE BERM (PLACED AT TOE OF ALL FILL SLOPES/STOCKPILES)
- TOPSOIL BERM
- SEED, EOR & FLEX
- SEED



906 Main Street
 Evanston, Wyoming 82930
 Phone No. (307) 789-4545



Production Schematic

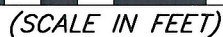
Project No. 10-04-15
 Date 7/16/10

Scale: 1" = 50'

Date 3/17/10
 Latest Revision
 Date:

SHEET
6
OF 10

SURFACE DISTURBANCE AREA



OF 10

