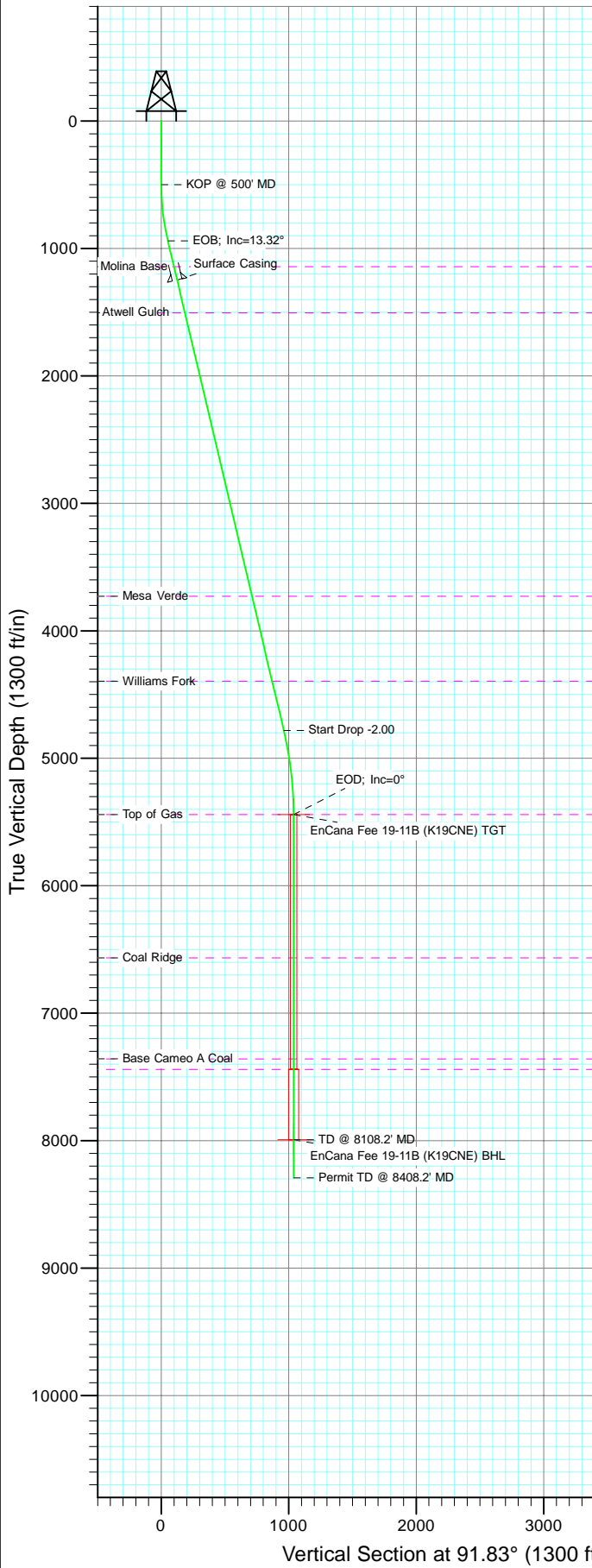
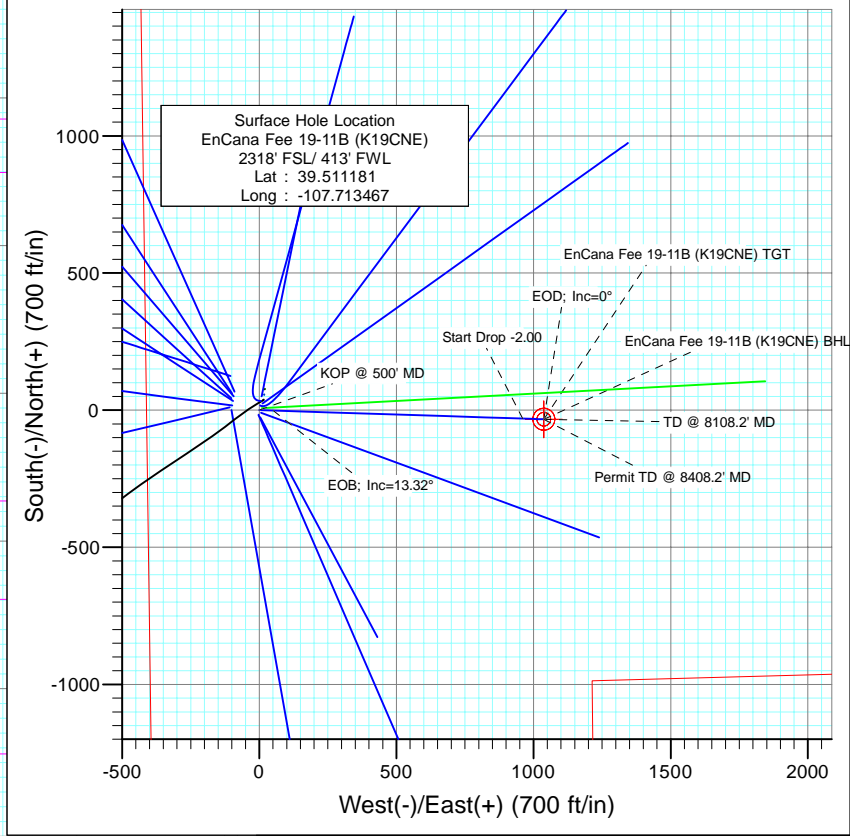




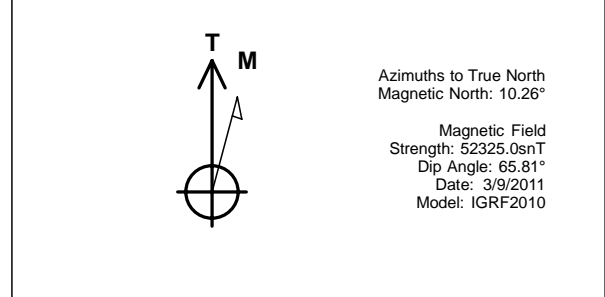
Project: Mamm Creek
 Site: SW S19-T6S-R29W (K19CNE Pad)
 Well: EnCana Fee 19-11B (K19CNE)
 Wellbore: DD
 Design: Plan #1



SECTION DETAILS										
Sec	MD	Inc	Azi	TVD	+N/-S	+E/-W	Dleg	TFace	VSect	Target
1	0.0	0.00	0.00	0.0	0.0	0.0	0.00	0.00	0.0	
2	500.0	0.00	0.00	500.0	0.0	0.0	0.00	0.00	0.0	
3	944.0	13.32	91.83	940.0	-1.6	51.3	3.00	91.83	51.4	
4	4892.2	13.32	91.83	4782.1	-30.7	960.4	0.00	0.00	960.9	
5	5558.2	0.00	0.00	5442.0	-33.1	1037.4	2.00	180.00	1038.0	EnCana Fee 19-11B (K19CNE) TGT
6	8108.2	0.00	0.00	7992.0	-33.1	1037.4	0.00	0.00	1038.0	EnCana Fee 19-11B (K19CNE) BHL
7	8408.2	0.00	0.00	8292.0	-33.1	1037.4	0.00	0.00	1038.0	



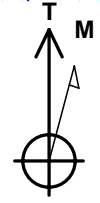
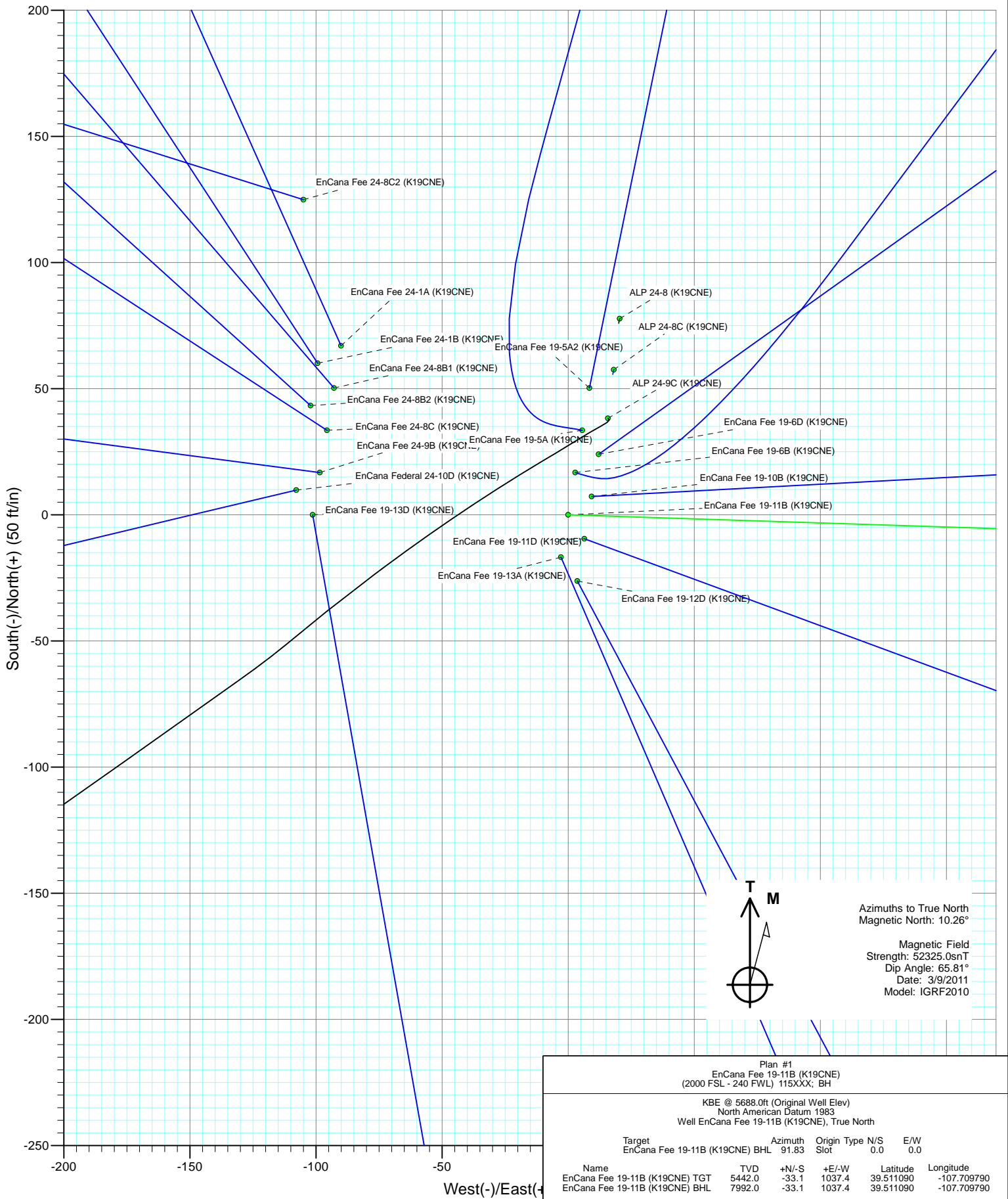
FORMATION TOP DETAILS		
TVDPath	MDPath	Formation
1143.0	1152.6	Molina Base
1504.0	1523.6	Atwell Gulch
3728.0	3809.0	Mesa Verde
4396.0	4495.5	Williams Fork
5442.0	5558.2	Top of Gas
6566.0	6682.2	Coal Ridge
7359.0	7475.2	Base Cameo A Coal
7442.0	7558.2	Rollins



Plan #1					
EnCana Fee 19-11B (K19CNE)					
(2000 FSL - 240 FWL) 115XXX; BH					
KBE @ 5688.0ft (Original Well Elev)					
North American Datum 1983					
Well EnCana Fee 19-11B (K19CNE), True North					
Target	Azimuth	Origin	Type	N/S	E/W
EnCana Fee 19-11B (K19CNE) BHL	91.83	Slot	0.0	0.0	0.0
Name	TVD	+N/-S	+E/-W	Latitude	Longitude
EnCana Fee 19-11B (K19CNE) TGT	5442.0	-33.1	1037.4	39.511090	-107.709790
EnCana Fee 19-11B (K19CNE) BHL	7992.0	-33.1	1037.4	39.511090	-107.709790



Project: Mamm Creek
 Site: SW S19-T6S-R29W (K19CNE Pad)
 Well: EnCana Fee 19-11B (K19CNE)
 Wellbore: DD
 Design: Plan #1

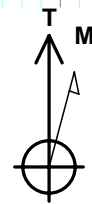
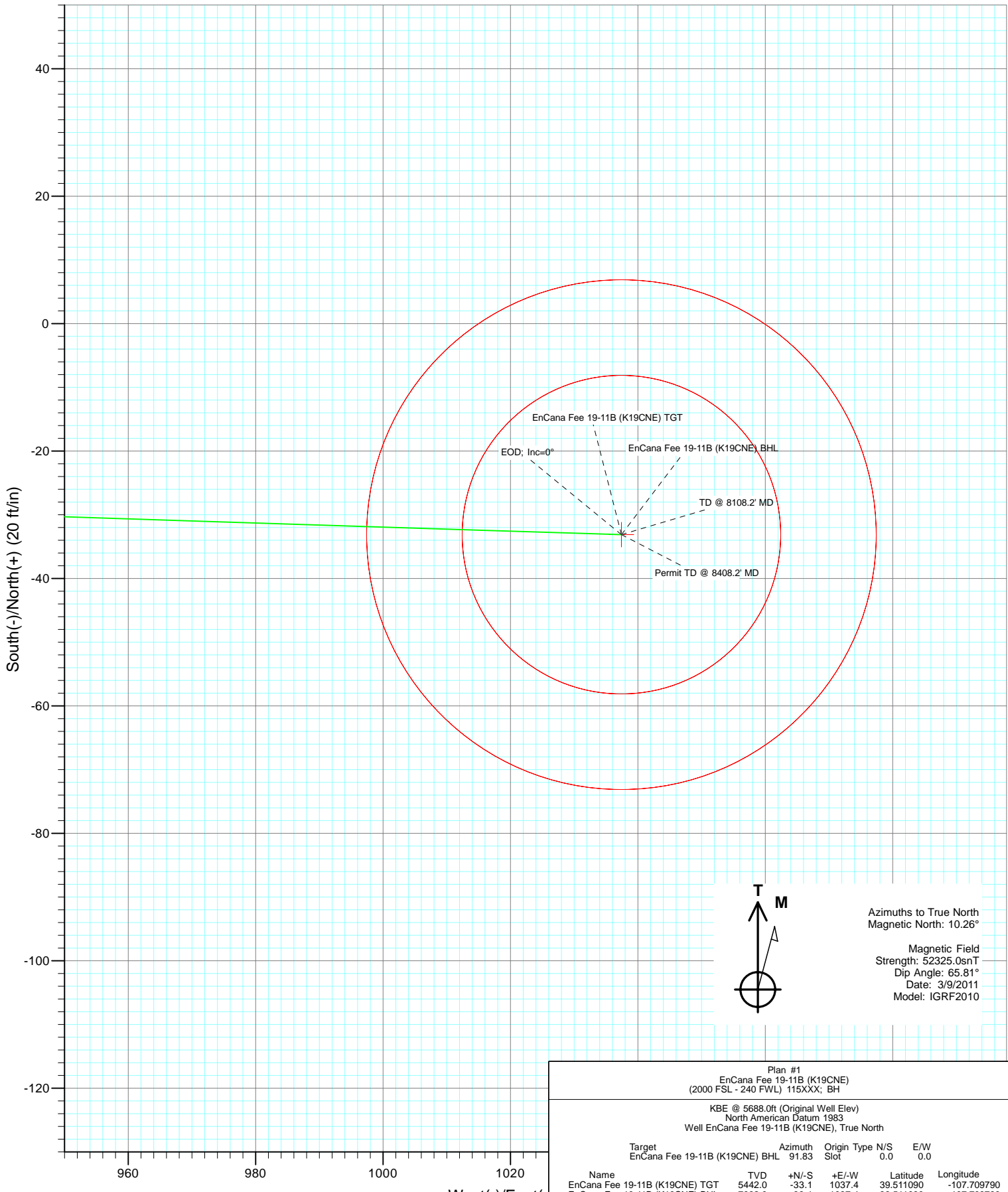


Azimuths to True North
 Magnetic North: 10.26°
 Magnetic Field
 Strength: 52325.0snT
 Dip Angle: 65.81°
 Date: 3/9/2011
 Model: IGRF2010

Plan #1 EnCana Fee 19-11B (K19CNE) (2000 FSL - 240 FWL) 115XXX; BH						
KBE @ 5688.0ft (Original Well Elev) North American Datum 1983 Well EnCana Fee 19-11B (K19CNE), True North						
Target	Name	TVD	+N/-S	+E/-W	Latitude	Longitude
EnCana Fee 19-11B (K19CNE) BHL			91.83			
EnCana Fee 19-11B (K19CNE) TGT		5442.0	-33.1	1037.4	39.511090	-107.709790
EnCana Fee 19-11B (K19CNE) BHL		7992.0	-33.1	1037.4	39.511090	-107.709790



Project: Mamm Creek
 Site: SW S19-T6S-R29W (K19CNE Pad)
 Well: EnCana Fee 19-11B (K19CNE)
 Wellbore: DD
 Design: Plan #1



Azimuths to True North
 Magnetic North: 10.26°

Magnetic Field
 Strength: 52325.0snT
 Dip Angle: 65.81°
 Date: 3/9/2011
 Model: IGRF2010

Plan #1						
EnCana Fee 19-11B (K19CNE)						
(2000 FSL - 240 FWL) 115XXX; BH						
KBE @ 5688.0ft (Original Well Elev)						
North American Datum 1983						
Well EnCana Fee 19-11B (K19CNE), True North						
Target		Azimuth	Origin	Type	N/S	E/W
EnCana Fee 19-11B (K19CNE) BHL		91.83	Slot		0.0	0.0
Name	TVD	+N/-S	+E/-W	Latitude	Longitude	
EnCana Fee 19-11B (K19CNE) TGT	5442.0	-33.1	1037.4	39.511090	-107.709790	
EnCana Fee 19-11B (K19CNE) BHL	7992.0	-33.1	1037.4	39.511090	-107.709790	

Cathedral Energy Services

Planning Report

Database: EDM 5000.1 US Multi Users DB	Local Co-ordinate Reference: Well EnCana Fee 19-11B (K19CNE)
Company: EnCana Oil & Gas (USA) Inc	TVD Reference: KBE @ 5688.0ft (Original Well Elev)
Project: Mamm Creek	MD Reference: KBE @ 5688.0ft (Original Well Elev)
Site: SW S19-T6S-R29W (K19CNE Pad)	North Reference: True
Well: EnCana Fee 19-11B (K19CNE)	Survey Calculation Method: Minimum Curvature
Wellbore: DD	
Design: Plan #1	

Project Mamm Creek		
Map System: US State Plane 1983	System Datum: Mean Sea Level	
Geo Datum: North American Datum 1983		
Map Zone: Colorado Central Zone		

Site SW S19-T6S-R29W (K19CNE Pad)					
Site Position:		Northing: 1,618,725.17 ft	Latitude: 39.511286		
From: Lat/Long		Easting: 2,375,576.53 ft	Longitude: -107.713411		
Position Uncertainty: 0.0 ft		Slot Radius: 0.000 in	Grid Convergence: -1.40 °		

Well EnCana Fee 19-11B (K19CNE)					
Well Position	+N/-S 0.0 ft	Northing: 1,618,687.27 ft	Latitude: 39.511181		
	+E/-W 0.0 ft	Easting: 2,375,559.84 ft	Longitude: -107.713467		
Position Uncertainty	0.0 ft	Wellhead Elevation: ft	Ground Level: 5,666.0 ft		

Wellbore DD					
Magnetics	Model Name	Sample Date	Declination	Dip Angle	Field Strength
	IGRF2010	3/9/2011	(°) 10.26	(°) 65.81	(nT) 52,325

Design Plan #1					
Audit Notes:					
Version:	Phase: PLAN	Tie On Depth: 0.0			
Vertical Section:	Depth From (TVD)	+N/-S	+E/-W	Direction	
	(ft)	(ft)	(ft)	(°)	
	0.0	0.0	0.0	91.83	

Plan Sections										
Measured Depth (ft)	Inclination (°)	Azimuth (°)	Vertical Depth (ft)	+N/-S (ft)	+E/-W (ft)	Dogleg Rate (°/100ft)	Build Rate (°/100ft)	Turn Rate (°/100ft)	TFO (°)	Target
0.0	0.00	0.00	0.0	0.0	0.0	0.00	0.00	0.00	0.00	
500.0	0.00	0.00	500.0	0.0	0.0	0.00	0.00	0.00	0.00	
944.0	13.32	91.83	940.0	-1.6	51.3	3.00	3.00	0.00	91.83	
4,892.2	13.32	91.83	4,782.1	-30.7	960.4	0.00	0.00	0.00	0.00	
5,558.2	0.00	0.00	5,442.0	-33.1	1,037.4	2.00	-2.00	0.00	180.00	EnCana Fee 19-11B (
8,108.2	0.00	0.00	7,992.0	-33.1	1,037.4	0.00	0.00	0.00	0.00	EnCana Fee 19-11B (
8,408.2	0.00	0.00	8,292.0	-33.1	1,037.4	0.00	0.00	0.00	0.00	

Cathedral Energy Services

Planning Report

Database:	EDM 5000.1 US Multi Users DB	Local Co-ordinate Reference:	Well EnCana Fee 19-11B (K19CNE)
Company:	EnCana Oil & Gas (USA) Inc	TVD Reference:	KBE @ 5688.0ft (Original Well Elev)
Project:	Mamm Creek	MD Reference:	KBE @ 5688.0ft (Original Well Elev)
Site:	SW S19-T6S-R29W (K19CNE Pad)	North Reference:	True
Well:	EnCana Fee 19-11B (K19CNE)	Survey Calculation Method:	Minimum Curvature
Wellbore:	DD		
Design:	Plan #1		

Planned Survey

Measured Depth (ft)	Inclination (°)	Azimuth (°)	Vertical Depth (ft)	+N/-S (ft)	+E/-W (ft)	Vertical Section (ft)	Dogleg Rate (°/100ft)	Build Rate (°/100ft)	Comments / Formations
0.0	0.00	0.00	0.0	0.0	0.0	0.0	0.00	0.00	
100.0	0.00	0.00	100.0	0.0	0.0	0.0	0.00	0.00	
200.0	0.00	0.00	200.0	0.0	0.0	0.0	0.00	0.00	
300.0	0.00	0.00	300.0	0.0	0.0	0.0	0.00	0.00	
400.0	0.00	0.00	400.0	0.0	0.0	0.0	0.00	0.00	
500.0	0.00	0.00	500.0	0.0	0.0	0.0	0.00	0.00	KOP @ 500' MD
600.0	3.00	91.83	600.0	-0.1	2.6	2.6	3.00	3.00	
700.0	6.00	91.83	699.6	-0.3	10.5	10.5	3.00	3.00	
800.0	9.00	91.83	798.8	-0.8	23.5	23.5	3.00	3.00	
900.0	12.00	91.83	897.1	-1.3	41.7	41.7	3.00	3.00	
944.0	13.32	91.83	940.0	-1.6	51.3	51.4	3.00	3.00	EOB; Inc=13.32°
1,000.0	13.32	91.83	994.5	-2.1	64.2	64.3	0.00	0.00	
1,100.0	13.32	91.83	1,091.8	-2.8	87.3	87.3	0.00	0.00	
1,152.6	13.32	91.83	1,143.0	-3.2	99.4	99.4	0.00	0.00	Molina Base
1,200.0	13.32	91.83	1,189.1	-3.5	110.3	110.4	0.00	0.00	
1,261.2	13.32	91.83	1,248.7	-4.0	124.4	124.5	0.00	0.00	Surface Casing
1,300.0	13.32	91.83	1,286.4	-4.3	133.3	133.4	0.00	0.00	
1,400.0	13.32	91.83	1,383.7	-5.0	156.3	156.4	0.00	0.00	
1,500.0	13.32	91.83	1,481.1	-5.7	179.4	179.5	0.00	0.00	
1,523.6	13.32	91.83	1,504.0	-5.9	184.8	184.9	0.00	0.00	Atwell Gulch
1,600.0	13.32	91.83	1,578.4	-6.5	202.4	202.5	0.00	0.00	
1,700.0	13.32	91.83	1,675.7	-7.2	225.4	225.5	0.00	0.00	
1,800.0	13.32	91.83	1,773.0	-7.9	248.4	248.6	0.00	0.00	
1,900.0	13.32	91.83	1,870.3	-8.7	271.5	271.6	0.00	0.00	
2,000.0	13.32	91.83	1,967.6	-9.4	294.5	294.6	0.00	0.00	
2,100.0	13.32	91.83	2,064.9	-10.1	317.5	317.7	0.00	0.00	
2,200.0	13.32	91.83	2,162.2	-10.9	340.5	340.7	0.00	0.00	
2,300.0	13.32	91.83	2,259.5	-11.6	363.6	363.8	0.00	0.00	
2,400.0	13.32	91.83	2,356.9	-12.3	386.6	386.8	0.00	0.00	
2,500.0	13.32	91.83	2,454.2	-13.1	409.6	409.8	0.00	0.00	
2,600.0	13.32	91.83	2,551.5	-13.8	432.6	432.9	0.00	0.00	
2,700.0	13.32	91.83	2,648.8	-14.5	455.7	455.9	0.00	0.00	
2,800.0	13.32	91.83	2,746.1	-15.3	478.7	478.9	0.00	0.00	
2,900.0	13.32	91.83	2,843.4	-16.0	501.7	502.0	0.00	0.00	
3,000.0	13.32	91.83	2,940.7	-16.8	524.7	525.0	0.00	0.00	
3,100.0	13.32	91.83	3,038.0	-17.5	547.8	548.0	0.00	0.00	
3,200.0	13.32	91.83	3,135.3	-18.2	570.8	571.1	0.00	0.00	
3,300.0	13.32	91.83	3,232.6	-19.0	593.8	594.1	0.00	0.00	
3,400.0	13.32	91.83	3,330.0	-19.7	616.8	617.2	0.00	0.00	
3,500.0	13.32	91.83	3,427.3	-20.4	639.9	640.2	0.00	0.00	
3,600.0	13.32	91.83	3,524.6	-21.2	662.9	663.2	0.00	0.00	
3,700.0	13.32	91.83	3,621.9	-21.9	685.9	686.3	0.00	0.00	
3,800.0	13.32	91.83	3,719.2	-22.6	708.9	709.3	0.00	0.00	
3,809.0	13.32	91.83	3,728.0	-22.7	711.0	711.4	0.00	0.00	Mesa Verde
3,900.0	13.32	91.83	3,816.5	-23.4	732.0	732.3	0.00	0.00	
4,000.0	13.32	91.83	3,913.8	-24.1	755.0	755.4	0.00	0.00	
4,100.0	13.32	91.83	4,011.1	-24.8	778.0	778.4	0.00	0.00	
4,200.0	13.32	91.83	4,108.4	-25.6	801.0	801.4	0.00	0.00	
4,300.0	13.32	91.83	4,205.8	-26.3	824.1	824.5	0.00	0.00	
4,400.0	13.32	91.83	4,303.1	-27.0	847.1	847.5	0.00	0.00	
4,495.5	13.32	91.83	4,396.0	-27.7	869.1	869.5	0.00	0.00	Williams Fork
4,500.0	13.32	91.83	4,400.4	-27.8	870.1	870.6	0.00	0.00	

Cathedral Energy Services

Planning Report

Database: EDM 5000.1 US Multi Users DB	Local Co-ordinate Reference: Well EnCana Fee 19-11B (K19CNE)
Company: EnCana Oil & Gas (USA) Inc	TVD Reference: KBE @ 5688.0ft (Original Well Elev)
Project: Mamm Creek	MD Reference: KBE @ 5688.0ft (Original Well Elev)
Site: SW S19-T6S-R29W (K19CNE Pad)	North Reference: True
Well: EnCana Fee 19-11B (K19CNE)	Survey Calculation Method: Minimum Curvature
Wellbore: DD	
Design: Plan #1	

Planned Survey									
Measured Depth (ft)	Inclination (°)	Azimuth (°)	Vertical Depth (ft)	+N/-S (ft)	+E/-W (ft)	Vertical Section (ft)	Dogleg Rate (°/100ft)	Build Rate (°/100ft)	Comments / Formations
4,600.0	13.32	91.83	4,497.7	-28.5	893.1	893.6	0.00	0.00	
4,700.0	13.32	91.83	4,595.0	-29.2	916.2	916.6	0.00	0.00	
4,800.0	13.32	91.83	4,692.3	-30.0	939.2	939.7	0.00	0.00	
4,892.2	13.32	91.83	4,782.1	-30.7	960.4	960.9	0.00	0.00	Start Drop -2.00
4,900.0	13.16	91.83	4,789.6	-30.7	962.2	962.7	2.00	-2.00	
5,000.0	11.16	91.83	4,887.4	-31.4	983.3	983.8	2.00	-2.00	
5,100.0	9.16	91.83	4,985.8	-31.9	1,000.9	1,001.4	2.00	-2.00	
5,200.0	7.16	91.83	5,084.8	-32.4	1,015.1	1,015.6	2.00	-2.00	
5,300.0	5.16	91.83	5,184.2	-32.7	1,025.8	1,026.3	2.00	-2.00	
5,400.0	3.16	91.83	5,283.9	-33.0	1,033.1	1,033.6	2.00	-2.00	
5,500.0	1.16	91.83	5,383.8	-33.1	1,036.8	1,037.4	2.00	-2.00	
5,558.2	0.00	0.00	5,442.0	-33.1	1,037.4	1,038.0	2.00	-2.00	EOD; Inc=0° - Top of Gas - EnCana Fee 19-11B
5,600.0	0.00	0.00	5,483.8	-33.1	1,037.4	1,038.0	0.00	0.00	
5,700.0	0.00	0.00	5,583.8	-33.1	1,037.4	1,038.0	0.00	0.00	
5,800.0	0.00	0.00	5,683.8	-33.1	1,037.4	1,038.0	0.00	0.00	
5,900.0	0.00	0.00	5,783.8	-33.1	1,037.4	1,038.0	0.00	0.00	
6,000.0	0.00	0.00	5,883.8	-33.1	1,037.4	1,038.0	0.00	0.00	
6,100.0	0.00	0.00	5,983.8	-33.1	1,037.4	1,038.0	0.00	0.00	
6,200.0	0.00	0.00	6,083.8	-33.1	1,037.4	1,038.0	0.00	0.00	
6,300.0	0.00	0.00	6,183.8	-33.1	1,037.4	1,038.0	0.00	0.00	
6,400.0	0.00	0.00	6,283.8	-33.1	1,037.4	1,038.0	0.00	0.00	
6,500.0	0.00	0.00	6,383.8	-33.1	1,037.4	1,038.0	0.00	0.00	
6,600.0	0.00	0.00	6,483.8	-33.1	1,037.4	1,038.0	0.00	0.00	
6,682.2	0.00	0.00	6,566.0	-33.1	1,037.4	1,038.0	0.00	0.00	Coal Ridge
6,700.0	0.00	0.00	6,583.8	-33.1	1,037.4	1,038.0	0.00	0.00	
6,800.0	0.00	0.00	6,683.8	-33.1	1,037.4	1,038.0	0.00	0.00	
6,900.0	0.00	0.00	6,783.8	-33.1	1,037.4	1,038.0	0.00	0.00	
7,000.0	0.00	0.00	6,883.8	-33.1	1,037.4	1,038.0	0.00	0.00	
7,100.0	0.00	0.00	6,983.8	-33.1	1,037.4	1,038.0	0.00	0.00	
7,200.0	0.00	0.00	7,083.8	-33.1	1,037.4	1,038.0	0.00	0.00	
7,300.0	0.00	0.00	7,183.8	-33.1	1,037.4	1,038.0	0.00	0.00	
7,400.0	0.00	0.00	7,283.8	-33.1	1,037.4	1,038.0	0.00	0.00	
7,475.2	0.00	0.00	7,359.0	-33.1	1,037.4	1,038.0	0.00	0.00	Base Cameo A Coal
7,500.0	0.00	0.00	7,383.8	-33.1	1,037.4	1,038.0	0.00	0.00	
7,558.2	0.00	0.00	7,442.0	-33.1	1,037.4	1,038.0	0.00	0.00	Rollins
7,600.0	0.00	0.00	7,483.8	-33.1	1,037.4	1,038.0	0.00	0.00	
7,700.0	0.00	0.00	7,583.8	-33.1	1,037.4	1,038.0	0.00	0.00	
7,800.0	0.00	0.00	7,683.8	-33.1	1,037.4	1,038.0	0.00	0.00	
7,900.0	0.00	0.00	7,783.8	-33.1	1,037.4	1,038.0	0.00	0.00	
8,000.0	0.00	0.00	7,883.8	-33.1	1,037.4	1,038.0	0.00	0.00	
8,100.0	0.00	0.00	7,983.8	-33.1	1,037.4	1,038.0	0.00	0.00	
8,108.2	0.00	0.00	7,992.0	-33.1	1,037.4	1,038.0	0.00	0.00	TD @ 8108.2' MD - EnCana Fee 19-11B (K19CNE)
8,200.0	0.00	0.00	8,083.8	-33.1	1,037.4	1,038.0	0.00	0.00	
8,300.0	0.00	0.00	8,183.8	-33.1	1,037.4	1,038.0	0.00	0.00	
8,400.0	0.00	0.00	8,283.8	-33.1	1,037.4	1,038.0	0.00	0.00	
8,408.2	0.00	0.00	8,292.0	-33.1	1,037.4	1,038.0	0.00	0.00	Permit TD @ 8408.2' MD

Cathedral Energy Services

Planning Report

Database: EDM 5000.1 US Multi Users DB	Local Co-ordinate Reference: Well EnCana Fee 19-11B (K19CNE)
Company: EnCana Oil & Gas (USA) Inc	TVD Reference: KBE @ 5688.0ft (Original Well Elev)
Project: Mamm Creek	MD Reference: KBE @ 5688.0ft (Original Well Elev)
Site: SW S19-T6S-R29W (K19CNE Pad)	North Reference: True
Well: EnCana Fee 19-11B (K19CNE)	Survey Calculation Method: Minimum Curvature
Wellbore: DD	
Design: Plan #1	

Targets									
Target Name	Dip Angle	Dip Dir.	TVD	+N/-S	+E/-W	Northing	Easting	Latitude	Longitude
- hit/miss target	(°)	(°)	(ft)	(ft)	(ft)	(ft)	(ft)		
- Shape									
EnCana Fee 19-11B (K1 - plan hits target center - Circle (radius 25.0)	0.00	0.00	5,442.0	-33.1	1,037.4	1,618,628.89	2,376,596.15	39.511090	-107.709790
EnCana Fee 19-11B (K1 - plan hits target center - Circle (radius 40.0)	0.00	0.00	7,992.0	-33.1	1,037.4	1,618,628.89	2,376,596.15	39.511090	-107.709790

Casing Points					
Measured Depth	Vertical Depth	Name	Casing Diameter	Hole Diameter	
(ft)	(ft)		(in)	(in)	
1,261.2	1,248.7	Surface Casing	0.000	0.000	

Formations						
Measured Depth	Vertical Depth	Name	Lithology	Dip	Dip Direction	
(ft)	(ft)			(°)	(°)	
1,152.6	1,143.0	Molina Base		0.00		
1,523.6	1,504.0	Atwell Gulch		0.00		
3,809.0	3,728.0	Mesa Verde		0.00		
4,495.5	4,396.0	Williams Fork		0.00		
5,558.2	5,442.0	Top of Gas		0.00		
6,682.2	6,566.0	Coal Ridge		0.00		
7,475.2	7,359.0	Base Cameo A Coal		0.00		
7,558.2	7,442.0	Rollins		0.00		

Plan Annotations					
Measured Depth	Vertical Depth	Local Coordinates		Comment	
(ft)	(ft)	+N/-S	+E/-W		
		(ft)	(ft)		
500.0	500.0	0.0	0.0	KOP @ 500' MD	
944.0	940.0	-1.6	51.3	EOB; Inc=13.32°	
4,892.2	4,782.1	-30.7	960.4	Start Drop -2.00	
5,558.2	5,442.0	-33.1	1,037.4	EOD; Inc=0°	
8,108.2	7,992.0	-33.1	1,037.4	TD @ 8108.2' MD	
8,408.2	8,292.0	-33.1	1,037.4	Permit TD @ 8408.2' MD	