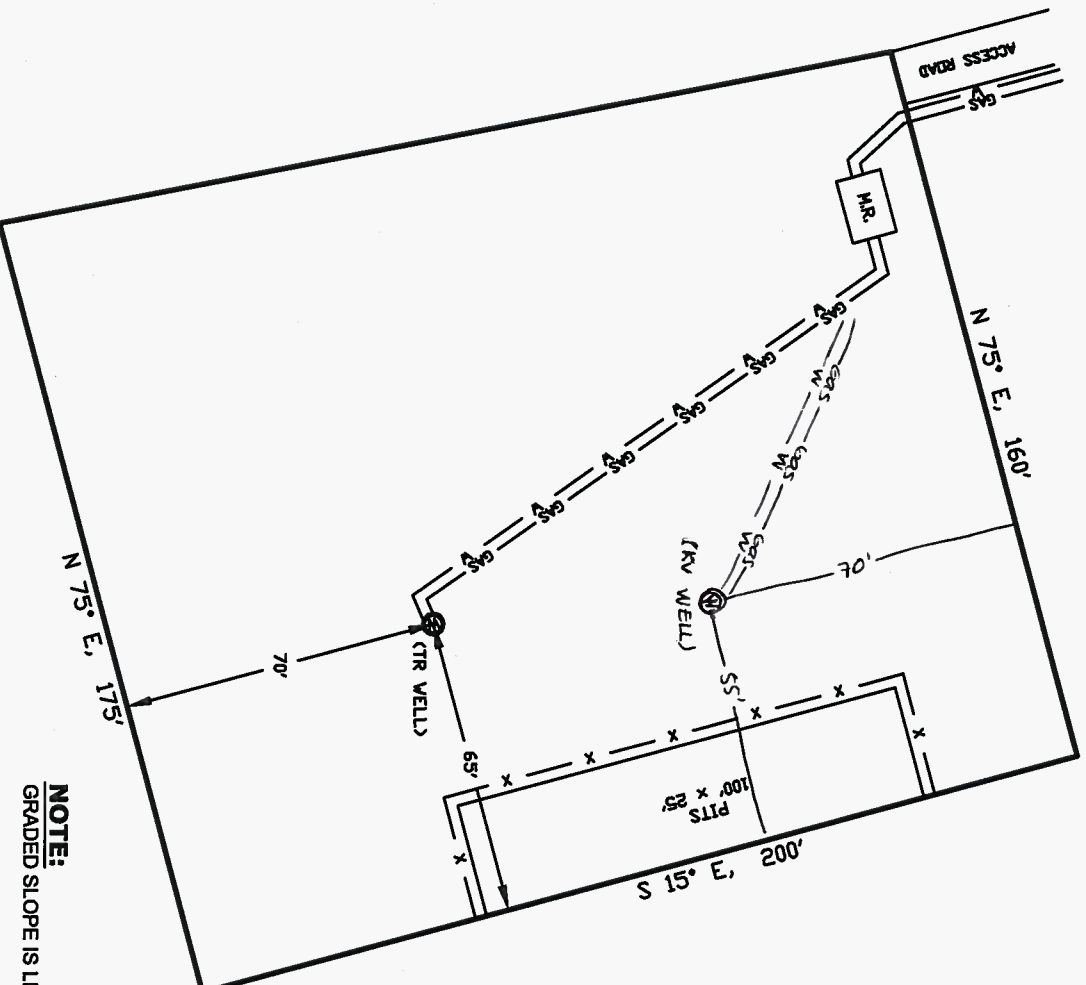


WELLSITE/PRODUCTION EQUIPMENT LAYOUT

DIRECTOR, Pioneer Natural Resources

WELL NAME: Kosar 21-11 TR

LOT 1 of SECTION 11 TOWNSHIP 33 S, RANGE 68 W OF THE 6TH P.M., IN LAS ANIMAS COUNTY



NOTE:
GRADED SLOPE IS LESS THAN 10%

LEGEND:

- ⊕ = WELLHEAD
- ⊙ = EXISTING WELLPAD
- x = FENCE (4 STRAND)
- GAS — = 4" GAS GATHERING LINE
- V — = 2" WATER LINE
- M.R. = COMBO METER RUN AND WATER/GAS SEPARATOR
- G.D.S. = GAS DRIVE SYSTEM

NOTE:

MUD AND BLOW PITS WILL BE CONVERTED TO LINED EVAPORATION PITS FOR PRODUCTION.

WELLHEADS ARE TYPICALLY PCP DRIVE HEADS

GRAPHIC SCALE



March 02, 2011
Date Plotted

(IN FEET)
1 inch = 40 ft.

SHIELDS SURVEY LTD. C.O.
Roton, New Mexico 87740
(575)445-1232