

EXXONMOBIL CORPORATION

HOUSTON, Texas

PCU 296-5A7

H&P 321 970-422-4867

Post Job Summary

Cement Production Casing

Prepared for: George McNary
Date Prepared: 18th April 2011
Version: 1

Service Supervisor: DAVIS, CODY

Submitted by: M.C. Dube

HALLIBURTON

HALLIBURTON

Wellbore Geometry

| Job Tubulars | | | | | MD | | TVD | | Excess % |
|-------------------|-----------------------------|---------|-------|-----------|----------|-----------|--------|-----------|----------|
| Type | Description | Size in | ID in | Wt lbm/ft | Top ft | Bottom ft | Top ft | Bottom ft | |
| Casing | 7" Intermediate Casing | 7.00 | 6.276 | 26.00 | 0.00 | 9,838.00 | 0.00 | 9,738.00 | |
| Open Hole Section | 6 1/8" Production Open Hole | | 6.125 | | 9,838.00 | 13,785.00 | 9,738 | 13,685 | 350.00 |
| Casing | 4 1/2" Production Casing | 4.50 | 3.826 | 15.10 | 0.00 | 13,771.00 | 0.00 | 13,671.00 | |

HALLIBURTON

Pumping Schedule

| Fluid Type | Fluid Name | Surface Density lbm/gal | Avg Rate bbl/min | Surface Volume | Downhole Volume |
|---------------|-------------------|----------------------------|---------------------|----------------|-----------------|
| Spacer | TUNED SPACER III | 10.50 | 4.00 | 60.0 bbl | 60.0 bbl |
| Cement Slurry | Tuned Light V4 | 12.00 | 6.00 | 800.0 sacks | 800.0 sacks |
| Spacer | NaCl Displacement | 8.45 | 6.00 | 191.0 bbl | 191.0 bbl |

Fluids Pumped

Stage/Plug # 1 Fluid 1: TUNED SPACER III
TUNED SPACER III - SBM (483826)
93.63 Barite
lbm/bbl

Fluid Density: 10.50 lbm/gal
Fluid Volume: 60.00 bbl
Pump Rate: 6.00 bbl/min

Stage/Plug # 1 Fluid 2: Tuned Light V4
TUNED LIGHT (TM) SYSTEM
0.61 lbm Halad(R)-344
0.51 lbm D-AIR 3000
0.51 lbm Econolite
0.41 lbm SCR-100
14.47 lbm SSA-1
0.18 lbm WG-17

Fluid Weight: 12.00 lbm/gal
Slurry Yield: 2.44 ft³/sack
Total Mixing Fluid: 11.98 Gal
Surface Volume: 800.0 sacks
Sacks: 800.0 sacks
Calculated Fill: 6,960.00 ft
Calculated Top of Fluid: 7,355.00 ft
Estimated Top of Fluid:
Pump Rate: 6.00 bbl/min

Stage/Plug # 1 Fluid 3: NaCl Displacement
FLUSH
7.15 lbm/bbl 2% NaCl Water

Fluid Density: 8.45 lbm/gal
Fluid Volume: 191.00 bbl
Pump Rate: 6.00 bbl/min

HALLIBURTON

Job Summary

Job Information

| | |
|---|--------------------------|
| Job Start Date | 4/6/2011 2:30:00 AM |
| Job MD | 13,771.0 ft |
| Job TVD | 13,671.0 ft |
| Height of Plug Container/Swage Above Rig Floor | 3.0 ft |
| Surface Temperature at Time of Job | 20 degF |
| Mud Type | Water Based Mud |
| Actual Mud Density | 10 lbm/gal |
| Time Circulated before job | 6.00 hour(s) |
| Pipe Movement During Hole Circulation | Rotated and Reciprocated |
| Time From End Mud Circ. to Job Start | 15.00 minute |
| Pipe Movement During Cementing | Reciprocated |
| Calculated Displacement | 203.56 bbl |
| Job Displaced by (rig/halco) | Cement Unit HP Pumps |
| Annular flow Before Job? (Water/Gas) | Unknown |
| Annular flow After Job? (Water/Gas) | Unknown |

Cementing Equipment

| | |
|--|------------------------------|
| Pipe Centralization | Through Entire Cement Column |
| Brand of Float Equipment Used | Weatherford |
| Did Float Equipment Hold? | Yes |
| Plug set used? | Yes |
| Brand of Plug set used? | Weatherford |
| Did Plugs Bump? | Yes |
| Calculated Pressure to Bump Plugs | 2,600.0 psig |
| Did Stage Cementing Tool Open Properly? | Unknown |

Service Supervisor Reports

Job Log

| Date/Time | Activity Code | Pump Rate | Pressure (psig) | Comments |
|------------------|---|-----------|-----------------|--|
| 04/05/2011 05:45 | Call Out | | | |
| 04/05/2011 07:45 | Depart Yard Safety Meeting | | | JOURNEY MANAGMENT |
| 04/05/2011 08:00 | Crew Leave Yard | | | |
| 04/05/2011 11:15 | Arrive at Location from Service Center | | | RIG RUNNING CASING |
| 04/05/2011 11:20 | Safety Meeting - Assessment of Location | | | RED ZONES OVER HEAD LINES |
| 04/05/2011 11:30 | Other | | | MEET W/ CO MAN AND GO OVER NUMBERS |
| 04/05/2011 11:40 | Other | | | SPOT TRUCKS USING TWO SPOTTERS |
| 04/05/2011 11:50 | Safety Meeting - Pre Rig-Up | | | PINCH POINTS RED ZONES LINE OF FIRE |
| 04/05/2011 12:00 | Rig-Up Equipment | | | RIG UP TO REDD ZONE |
| 04/05/2011 13:30 | Other | | | WAIT ON RIG TO RUN CASONG |
| 04/06/2011 01:00 | Rig-Up Equipment | | | RIG UP FLOOR |
| 04/06/2011 02:00 | Rig-Up Completed | | | |
| 04/06/2011 02:30 | Safety Meeting - Pre Job | | | GO OVER JOB PROCESS |
| 04/06/2011 02:53 | Pump Water | | | 2BBLS TO FILL LINES |
| 04/06/2011 02:56 | Pressure Test | | | TO 250PSI |
| 04/06/2011 03:00 | Pressure Test | | | TO 5000PSI |
| 04/06/2011 03:06 | Pump Spacer | | | 10BBLS TUNE SPACER |
| 04/06/2011 03:08 | Shutdown | | | PUMP TRUCK BROKE DOWN |
| 04/06/2011 03:15 | Other | | | WAIT ON ANOTHER TRUCK TO COME |
| 04/06/2011 04:45 | Safety Meeting - Pre Job | | | GO OVER JOB PROCESS |
| 04/06/2011 04:57 | Pump Water | | | 2 BBLS TO FILL LINES |
| 04/06/2011 05:00 | Pressure Test | | 250.0 | TO 250PSI |
| 04/06/2011 05:03 | Pressure Test | | 5000.0 | TO 5000PSI |
| 04/06/2011 05:11 | Pump Spacer | 4 | 946.0 | 70BBLS TUNE SPACER |
| 04/06/2011 05:27 | Shutdown | | | |
| 04/06/2011 05:31 | Drop Bottom Plug | | | |
| 04/06/2011 05:32 | Pump Cement | 6 | 745.0 | PUMP 347.7BBLS TUNE LIGHT CMT 12# 2.44YIELD 11.98GAL/SK 800SKS |
| 04/06/2011 06:37 | Shutdown | | | |
| 04/06/2011 06:38 | Clean Lines | | | CLEAN PUMPS AND LINES TO PIT |
| 04/06/2011 06:44 | Drop Top Plug | | | |
| 04/06/2011 06:46 | Pump Displacement - Start | 8 | 366.0 | PUMP SALT WATER DISPLACEMENT |

HALLIBURTON

| Date/Time | Activity Code | Pump Rate | Pressure (psig) | Comments |
|------------------|--|-----------|-----------------|---|
| 04/06/2011 06:49 | Displ Reached Cmnt | 8 | 1828.0 | 28BBLS GONE |
| 04/06/2011 07:07 | Slow Rate | 5 | 2260.0 | 160BBLS GONE |
| 04/06/2011 07:10 | Slow Rate | 2 | 2020.0 | 180BBLS GONE |
| 04/06/2011 07:15 | Bump Plug | 2 | 1990.0 | TOTAL DISPLACMENT 194BBLS PRESSURE OVER 500PSI TO 2675PSI |
| 04/06/2011 07:20 | Check Floats | | | 2BBLS BACK |
| 04/06/2011 07:35 | Safety Meeting - Pre Rig-Down | | | PINCH POINTS RED ZONES LINE OF FIRE |
| 04/06/2011 07:45 | Rig-Down Equipment | | | |
| 04/06/2011 10:15 | Rig-Down Completed | | | |
| 04/06/2011 10:30 | Safety Meeting - Departing Location | | | JOURNEY MANAGMENT |
| 04/06/2011 10:45 | Depart Location for Service Center or Other Site | | | |
| 04/06/2011 12:50 | Safety Meeting - Pre Rig-Up | | | PINCH POINTS RED ZONES LINE OF FIRE |

The Road to Excellence Starts with Safety

| | | | |
|--|------------------------------------|---------------------------|------------------------|
| Sold To #: 331699 | Ship To #: 2753383 | Quote #: | Sales Order #: 8061172 |
| Customer: EXXONMOBIL CORPORATION | Customer Rep: Murawski, Victoria | | |
| Well Name: PCU | Well #: 296-5A7 | API/UWI #: | 05103112430000 |
| Field: | City (SAP): MEEKER | County/Parish: Rio Blanco | State: Colorado |
| Legal Description: Section 5 Township 2S Range 96W | | | |
| Contractor: H&P | Rig/Platform Name/Num: 321 | 970-422-4867 | |
| Job Purpose: Cement Production Casing | | | |
| Well Type: Development Well | Job Type: Cement Production Casing | | |
| Sales Person: MCNARY, GEORGE | Srvc Supervisor: DAVIS, CODY | MBU ID Emp #: | 446891 |

Job Personnel

| HES Emp Name | Exp Hrs | Emp # | HES Emp Name | Exp Hrs | Emp # | HES Emp Name | Exp Hrs | Emp # |
|-------------------|---------|--------|------------------------|---------|--------|-----------------------------|---------|--------|
| DAVIS, CODY R | 22 | 446891 | ESTEP, KENNETH | 22 | 121420 | HERNANDEZ, AARON Matthew | 22 | 489820 |
| PEAY, SHANE Blake | 22 | 472880 | WALSH, JAMES Ronald | 22 | 457722 | WILLIAMS, CAMERON Kent | 22 | 438405 |

Equipment

| HES Unit # | Distance-1 way | HES Unit # | Distance-1 way | HES Unit # | Distance-1 way | HES Unit # | Distance-1 way |
|------------|----------------|------------|----------------|------------|----------------|------------|----------------|
| | | | | | | | |

Job Hours

| Date | On Location Hours | Operating Hours | Date | On Location Hours | Operating Hours | Date | On Location Hours | Operating Hours |
|--------|-------------------|-----------------|--|-------------------|-----------------|------|-------------------|-----------------|
| 4-5-11 | 12 | 0 | 4-6-11 | 10 | 2.5 | | | |
| TOTAL | | | Total is the sum of each column separately | | | | | |

Job

Job Times

| Formation Name | | | | | Date | Time | Time Zone |
|------------------------|-----------|-------------------|-----------|--|---------------|-----------------|-----------|
| Formation Depth (MD) | Top | | Bottom | | Called Out | 05 - Apr - 2011 | 05:45 MST |
| Form Type | | BHST | | | On Location | 05 - Apr - 2011 | 11:15 MST |
| Job depth MD | 13771. ft | Job Depth TVD | 13671. ft | | Job Started | 06 - Apr - 2011 | 02:30 MST |
| Water Depth | | Wk Ht Above Floor | 3. ft | | Job Completed | 06 - Apr - 2011 | 07:20 MST |
| Perforation Depth (MD) | From | | To | | Departed Loc | 06 - Apr - 2011 | 10:30 MST |

Well Data

| Description | New / Used | Max pressure psig | Size in | ID in | Weight lbm/ft | Thread | Grade | Top MD ft | Bottom MD ft | Top TVD ft | Bottom TVD ft |
|-----------------------------|------------|-------------------|---------|-------|---------------|--------|-------|-----------|--------------|------------|---------------|
| 6 1/8" Production Open Hole | | | | 6.125 | | | | 9838. | 13785. | 9738 | 13685 |
| 4 1/2" Production Casing | Unknown | | 4.5 | 3.826 | 15.1 | | P-110 | 0. | 13771. | 0. | 13671. |
| 7" Intermediate Casing | Unknown | | 7. | 6.276 | 26. | | P-110 | 0. | 9838. | 0. | 9738. |

Tools and Accessories

| Type | Size | Qty | Make | Depth | Type | Size | Qty | Make | Depth | Type | Size | Qty | Make |
|--------------|------|-----|------|-------|-------------|------|-----|------|-------|----------------|------|-----|------|
| Guide Shoe | | | | | Packer | | | | | Top Plug | | | |
| Float Shoe | | | | | Bridge Plug | | | | | Bottom Plug | | | |
| Float Collar | | | | | Retainer | | | | | SSR plug set | | | |
| Insert Float | | | | | | | | | | Plug Container | | | |
| Stage Tool | | | | | | | | | | Centralizers | | | |

Miscellaneous Materials

| Gelling Agt | Conc | Surfactant | Conc | Acid Type | Qty | Conc | % |
|-------------|------|------------|------|-----------|-----|------|---|
|-------------|------|------------|------|-----------|-----|------|---|

| | | | | | | | | | | | | | |
|---------------|--|------|--|-----------|--|------|--|-----------|--|------|--|-----|--|
| Treatment Fld | | Conc | | Inhibitor | | Conc | | Sand Type | | Size | | Qty | |
|---------------|--|------|--|-----------|--|------|--|-----------|--|------|--|-----|--|

| Fluid Data | | | | | | | | | | |
|--|-------------------|---|--------|-----------------------------------|------------------------|---------------------|------------------|--------------|------------------------|--|
| Stage/Plug #: 1 | | | | | | | | | | |
| Fluid # | Stage Type | Fluid Name | Qty | Qty uom | Mixing Density lbm/gal | Yield ft3/sk | Mix Fluid Gal/sk | Rate bbl/min | Total Mix Fluid Gal/sk | |
| 1 | TUNED SPACER III | TUNED SPACER III - SBM (483826) | 60.00 | bbl | 10.5 | .0 | .0 | 4.0 | | |
| 45.621 gal/bbl | | FRESH WATER | | | | | | | | |
| 93.63 lbm/bbl | | BARITE, 100 LB SK (100003680) | | | | | | | | |
| 2 | Tuned Light V4 | TUNED LIGHT (TM) SYSTEM (452984) | 800.0 | sacks | 12. | 2.44 | 11.98 | 6.0 | 11.98 | |
| 0.61 lbm | | HALAD(R)-344, 50 LB (100003670) | | | | | | | | |
| 0.51 lbm | | D-AIR 3000 (101007446) | | | | | | | | |
| 0.51 lbm | | ECONOLITE (100001580) | | | | | | | | |
| 0.41 lbm | | SCR-100 (100003749) | | | | | | | | |
| 14.47 lbm | | SAND-SSA-1 - SILICA FLOUR - 200 MESH, 50 LB (100003796) | | | | | | | | |
| 0.18 lbm | | WG-17, 50 LB SK (100003623) | | | | | | | | |
| 11.98 Gal | | FRESH WATER | | | | | | | | |
| 3 | NaCl Displacement | | 191.00 | bbl | 8.45 | .0 | .0 | 6.0 | | |
| 7.15 lbm/bbl | | SALT, 100 LB BAG (100003652) | | | | | | | | |
| Calculated Values | | Pressures | | Volumes | | | | | | |
| Displacement | | Shut In: Instant | | Lost Returns | | Cement Slurry | | Pad | | |
| Top Of Cement | | 5 Min | | Cement Returns | | Actual Displacement | | Treatment | | |
| Frac Gradient | | 15 Min | | Spacers | | Load and Breakdown | | Total Job | | |
| Rates | | | | | | | | | | |
| Circulating | | Mixing | | Displacement | | Avg. Job | | | | |
| Cement Left In Pipe | Amount | 0 ft | Reason | Shoe Joint | | | | | | |
| Frac Ring # 1 @ | ID | Frac ring # 2 @ | ID | Frac Ring # 3 @ | ID | Frac Ring # 4 @ | ID | | | |
| The Information Stated Herein Is Correct | | | | Customer Representative Signature | | | | | | |

HALLIBURTON

Lab Data

Job Information

| | | | | | |
|-----------------------|---------------|-----------------|-------------------|-------------------|-------------|
| Request/Slurry | 138075 | Rig Name | H&P 321 | Date | 27/MAR/2011 |
| Submitted By | Joshua Anglin | Job Type | Production Casing | Bulk Plant | Meeker |
| Customer | ExxonMobil | Location | Rio Blanco | Well | PCU 296-5A7 |

Well Information

| | | | | | |
|--------------------------|--------|------------------|----------|-------------|-------|
| Casing/Liner Size | 4 1/2" | Depth MD | 14028 ft | BHST | 289 F |
| Hole Size | 6 1/8" | Depth TVD | 13696 ft | BHCT | 224 F |

Cement Information - Primary Design

| <u>Conc</u> | <u>UOM</u> | <u>Cement/Additive</u> | <u>Sample Type</u> | <u>Sample Date</u> | <u>Lot No.</u> | <u>Cement Properties</u> | | |
|-------------|------------|---------------------------|--------------------|--------------------|----------------|--------------------------|-------|--------|
| | | Tuned Light | | | | Slurry Density | 12.00 | PPG |
| | | | | | | Slurry Yield | 2.44 | ft3/sk |
| | | | | | | Water Requirement | 11.98 | GPS |
| 40 | % | > Boral Craig Pozmix | Bulk | Mar 30, 2011 | | | | |
| 15 | % | > Enhancer 923 | Bulk | Mar 30, 2011 | | | | |
| 5.23 | % | > HGS 10000 (PB) | Bulk | Mar 30, 2011 | 98-0212-2990-5 | | | |
| 43 | % | > Mountain G | Bulk | Mar 30, 2011 | | | | |
| 20 | % | > Silicalite - Compacted | Bulk | Mar 30, 2011 | OG180103-2 | | | |
| 100.00 | % BWOC | Cement Blend | | | | | | |
| 14.147 | % BWOC | SSA-1 (Silica Flour) - PB | Bulk | Mar 30, 2011 | 2010265AC | | | |
| 0.500 | % BWOC | Econolite (Powder - PB) | Bulk | Mar 30, 2011 | UO21011 | | | |
| 0.600 | % BWOC | HALAD-344 (PB) | Bulk | Mar 30, 2011 | BO-347 | | | |
| 0.175 | % BWOC | FWCA | Bulk | Mar 30, 2011 | YJ2655S6P2 | | | |
| 0.410 | lb/sk | SCR-100 | Bulk | Mar 30, 2011 | L10-017 | | | |
| 0.500 | % BWOC | D-Air 3000 | Bulk | Mar 30, 2011 | 2011033AC | | | |
| 11.98 | gal/sack | Field (Fresh) Water | Lab | Feb 18, 2011 | 1-18-11 | | | |

Operation Test Results Request ID 138075

UCA Comp. Strength, Request Test ID:1401181

| End Temp (°F) | Pressure (psi) | 50 psi (hh:mm) | 500 psi (hh:mm) | 8 hr CS (psi) | 12 hr CS (psi) | 24 hr CS (psi) | 48 hr CS (psi) | End CS (psi) | End Time (hrs) |
|---------------|----------------|----------------|-----------------|---------------|----------------|----------------|----------------|--------------|----------------|
| 258 | 3,000 | 04:18 | 04:47 | 653 | 954 | 1,127 | 1,276 | 1,355 | 72 |

Thickening Time, Request Test ID:1401178

| Temp (°F) | Pressure (psi) | Reached in (min) | Start BC | 30 Bc (hh:mm) | 50 Bc (hh:mm) | 70 Bc (hh:mm) | 100 Bc (hh:mm) |
|-----------|----------------|------------------|----------|---------------|---------------|---------------|----------------|
| 224 | 6,901 | 40 | 15 | 02:59 | 03:13 | 03:15 | 03:18 |

Mud Balance Density, Request Test ID:1401186

Density (ppg)

12

Mixability (0 - 5) - 0 is not mixable, Request Test ID:1401185

Mixability rating (0 - 5)

5

HALLIBURTON

Marsh Funnel, Request Test ID:1401187

| Volume [ml] | Time [Sec] | Foam Quality |
|-------------|------------|--------------|
| 250 | 51 | 0 |

Free Water, Request Test ID:1401183

| Test Temp (°F) | % FW 45 Inc |
|----------------|-------------|
| 180 | 0.1 |

API Rheology, Request Test ID:1401182

| Temp (°F) | 600 | 300 | 200 | 100 | 60 | 30 | 6 | 3 | Cond Time (min) | PV/YP |
|-----------|-----|-----|-----|-----|----|----|----|----|-----------------|--------------|
| 80 | 193 | 119 | 92 | 60 | 46 | 34 | 20 | 16 | 0 | 102.1 / 22.6 |

API Fluid Loss, Request Test ID:1401184

| Test Temp (°F) | Test Pressure (psi) | Test Time (min) | ISO FL (cc/30 min) |
|----------------|---------------------|-----------------|--------------------|
| 180 | 1,000 | 30 | 62 |

Additional Comments

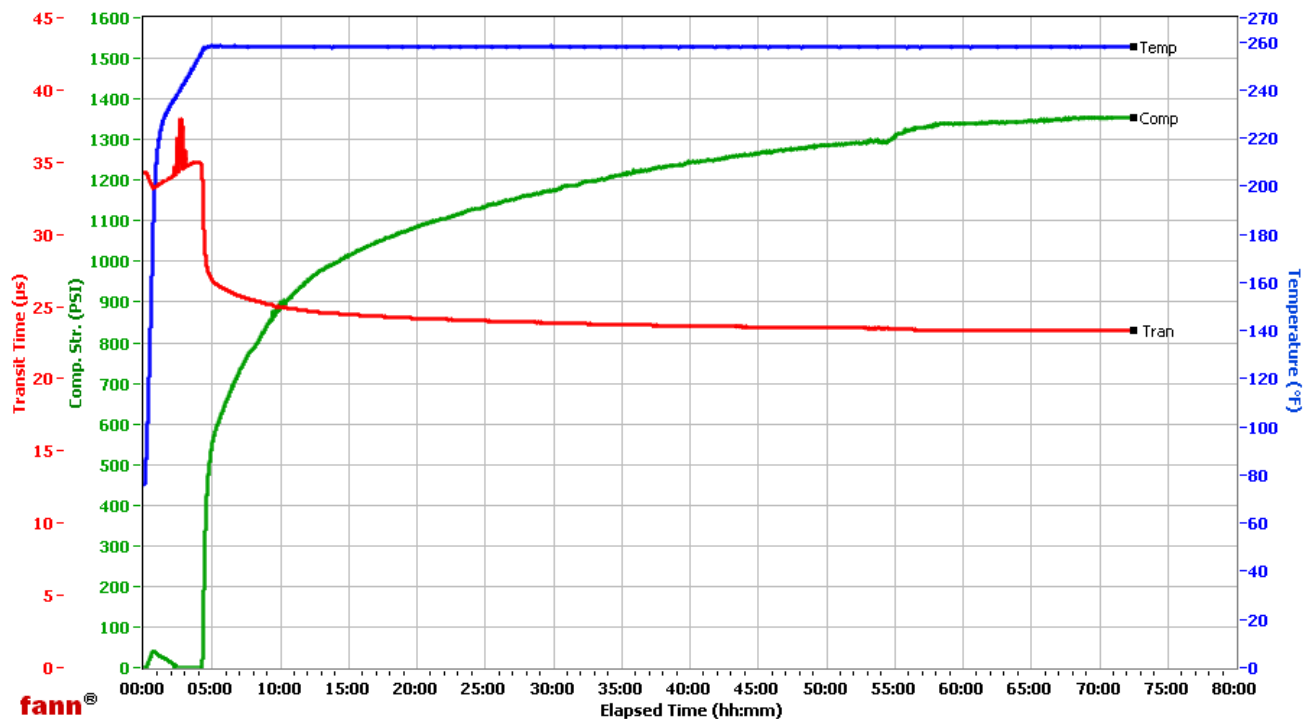
HALLIBURTON

WRCR

| Fields | Values |
|-------------------|---------------------|
| Project Name | ExxonMobil 138075-2 |
| Test ID | 138075-2 |
| Request ID | UCA #5 |
| Tested by | BSH |
| Customer | ExxonMobil |
| Well No | PCU 296-5A7 |
| Rig | H8P 321 |
| Casing/Liner Size | 4.5 |
| Job Type | Production Primary |

| Fields | Values |
|----------------|---|
| Cement Type | G |
| Cement Weight | Light Weight |
| Comments | G, 0.41#SCR-100, 12.0 density, 2.44 yield |
| Test Date | 3/31/2011 |
| Test Time | 9:00 AM |
| Temp. Units | degF |
| Pressure Units | PSI |

| Events | Results |
|-------------|---------|
| 50.00 PSI | 04h:18m |
| 100.00 PSI | 04h:20m |
| 500.00 PSI | 04h:47m |
| 1000.00 PSI | 14h:16m |
| 06h:00m | 652.84 |
| 12h:00m | 953.52 |
| 24h:00m | 1127.12 |
| 48h:00m | 1276.45 |
| 72h:00m | 1355.1 |



Data File C:\Documents and Settings\UCA\My Documents\DATA\138075-2.tdms

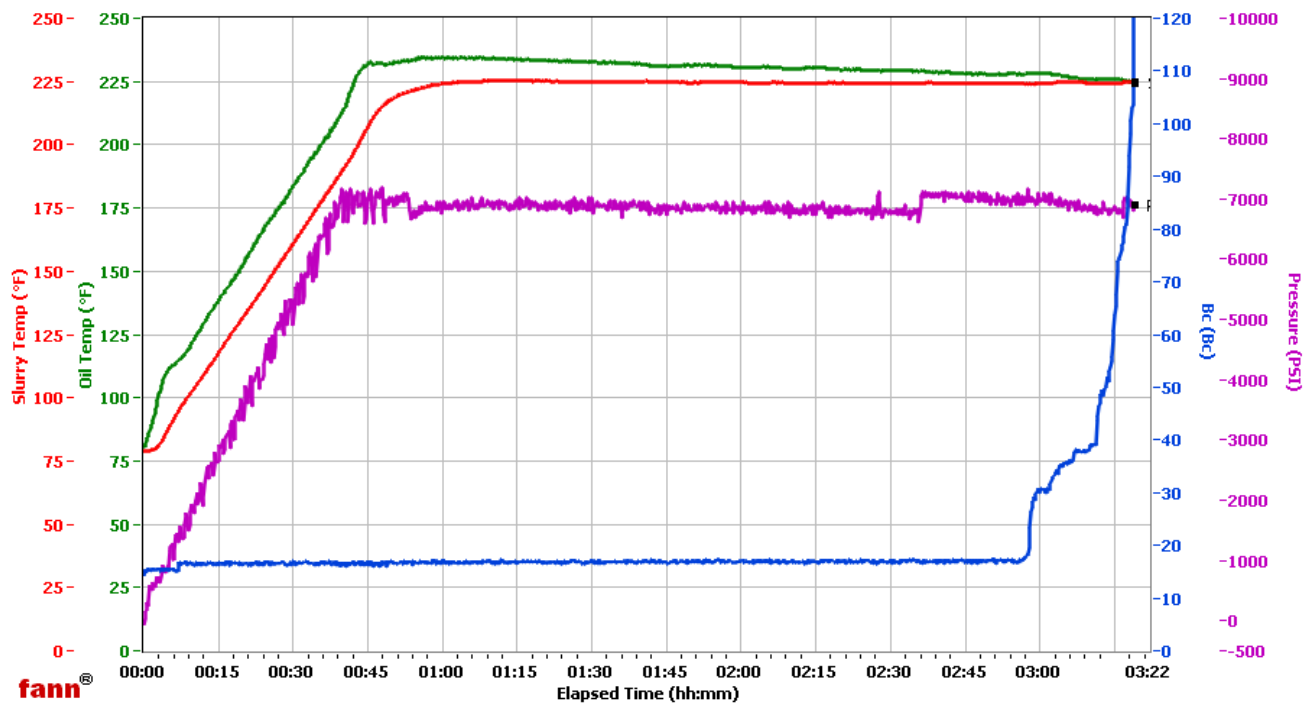
HALLIBURTON

WRCR

| Fields | Values |
|-------------------|---------------------|
| Project Name | ExxonMobil 138075-2 |
| Test ID | 138075-2 |
| Request ID | HPHT#3 |
| Tested by | B5H |
| Customer | ExxonMobil |
| Well No | PCU 296-5A7 |
| Rig | H&P 321 |
| Casing/Liner Size | 4.5 |

| Fields | Values |
|----------------|--------------------|
| Job Type | Production Primary |
| Cement Type | G |
| Cement Weight | Light Weight |
| Test Date | 03/31/11 |
| Test Time | 03:48 AM |
| Temp. Units | degF |
| Pressure Units | PSI |

| Events | Results |
|-----------|---------|
| 30.00 Bc | 02h:59m |
| 50.00 Bc | 03h:13m |
| 60.00 Bc | 03h:14m |
| 70.00 Bc | 03h:15m |
| 100.00 Bc | 03h:18m |
| 200.00 Bc | NaN |
| 03h:00m | 30.56 |
| 06h:00m | NaN |



Data File O:\HPHT Data Files WRCR\WRCR Consistometer #3\ExxonMobil 138075-2.tdms

Comments G, 0.41#SCR-100, 12.00 density, 2.44 yield

HALLIBURTON

LOCATION WATER TEST

General Information

Customer: EXXONMOBIL CORPORATION Date: 05 - Apr - 2011

Sales Order #: 8061172 Time:

Lease Name & #: PCU 296-5A7 Water Source:

SL Name & Employee #: DAVIS, CODY

TestResultsSample#1

| | Field | | Lab | Standards |
|--------------|-----------------|--|------------------------|---------------------|
| Temp | <u>74</u> °F | | <u> </u> °F | Max Temp 120°F |
| pH | <u>7</u> | | <u> </u> | 6.0-8.0 |
| Sulfates | <u>500</u> mg/L | | <u> </u> mg/L | Less Than 1800 mg/L |
| Chlorides | <u>350</u> mg/L | | <u> </u> mg/L | Less Than 3000 mg/L |
| Tanin&Lignin | <u>N</u> Y/N | | <u> </u> Y/N | No Trace |
| Bicarbonates | <u>XXXXXXXX</u> | | <u> </u> mg/L | Less Than 500 mg/L |

TestResultsSample#2

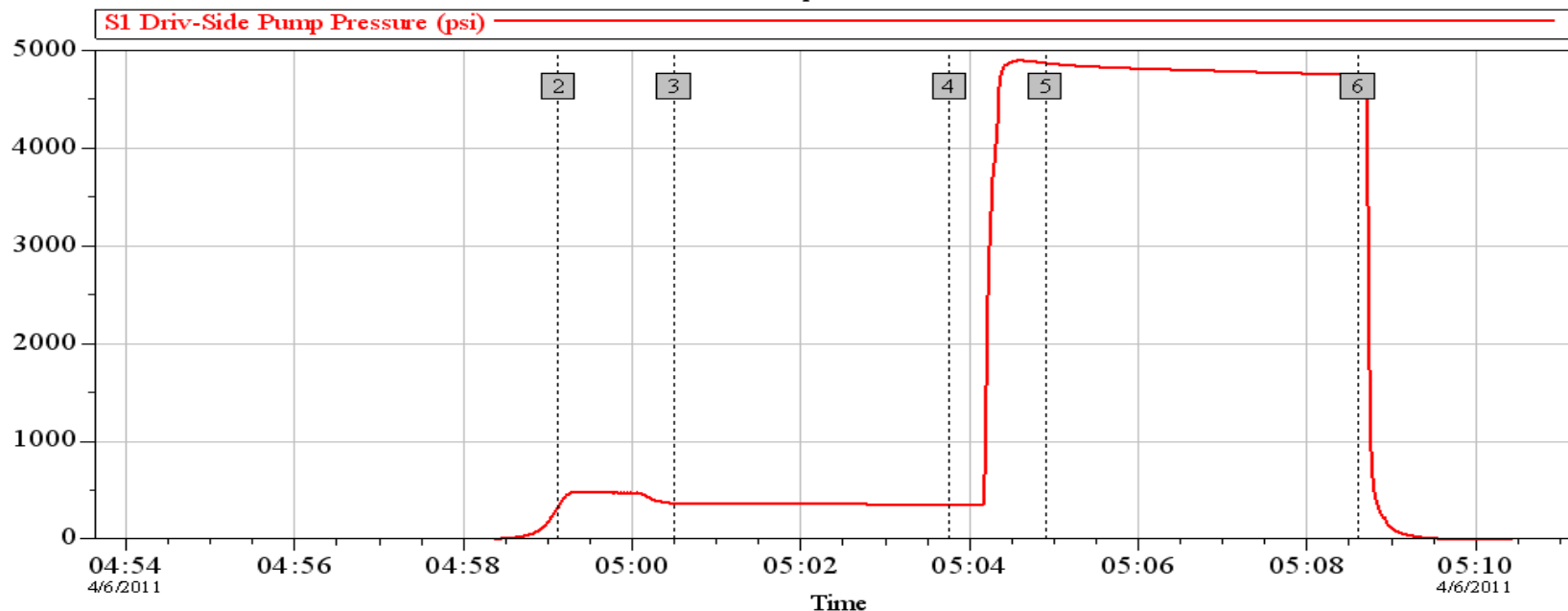
| | Field | | Lab | Standards |
|--------------|------------------------|--|------------------------|---------------------|
| Temp | <u> </u> °F | | <u> </u> °F | MaxT emp 120°F |
| pH | <u> </u> | | <u> </u> | 6.0-8.0 |
| Sulfates | <u> </u> mg/L | | <u> </u> mg/L | Less Than 1800 mg/L |
| Chlorides | <u> </u> mg/L | | <u> </u> mg/L | Less Than 3000 mg/L |
| Tanin&Lignin | <u> </u> Y/N | | <u> </u> Y/N | No Trace |
| Bicarbonates | <u>XXXXXXXX</u> | | <u> </u> mg/L | Less Than 500 mg/L |

TestResultsSample#3

| | Field | | Lab | Standards |
|--------------|------------------------|--|------------------------|---------------------|
| Temp | <u> </u> °F | | <u> </u> °F | Max Temp 120°F |
| pH | <u> </u> | | <u> </u> | 6.0-8.0 |
| Sulfates | <u> </u> mg/L | | <u> </u> mg/L | Less Than 1800 mg/L |
| Chlorides | <u> </u> mg/L | | <u> </u> mg/L | Less Than 3000 mg/L |
| Tanin&Lignin | <u> </u> Y/N | | <u> </u> Y/N | No Trace |
| Bicarbonates | <u>XXXXXXXX</u> | | <u> </u> mg/L | Less Than 500 mg/L |

Remarks:

PCU 296-5A7 Production Cement Job Pressure Test 6 April 2011



| Global Event Log | | | | | |
|----------------------------|----------------|---------------------------|----------------|-------------------------|----------------|
| Intersection | SDPP | Intersection | SDPP | Intersection | SDPP |
| 2 Start Job | 04:59:08 328.3 | 3 Start Low Pressure Test | 05:00:30 367.9 | 4 End Low Pressure Test | 05:03:46 354.3 |
| 5 Start High Pressure Test | 05:04:54 4868 | 6 End High Pressure Test | 05:08:36 4748 | | |

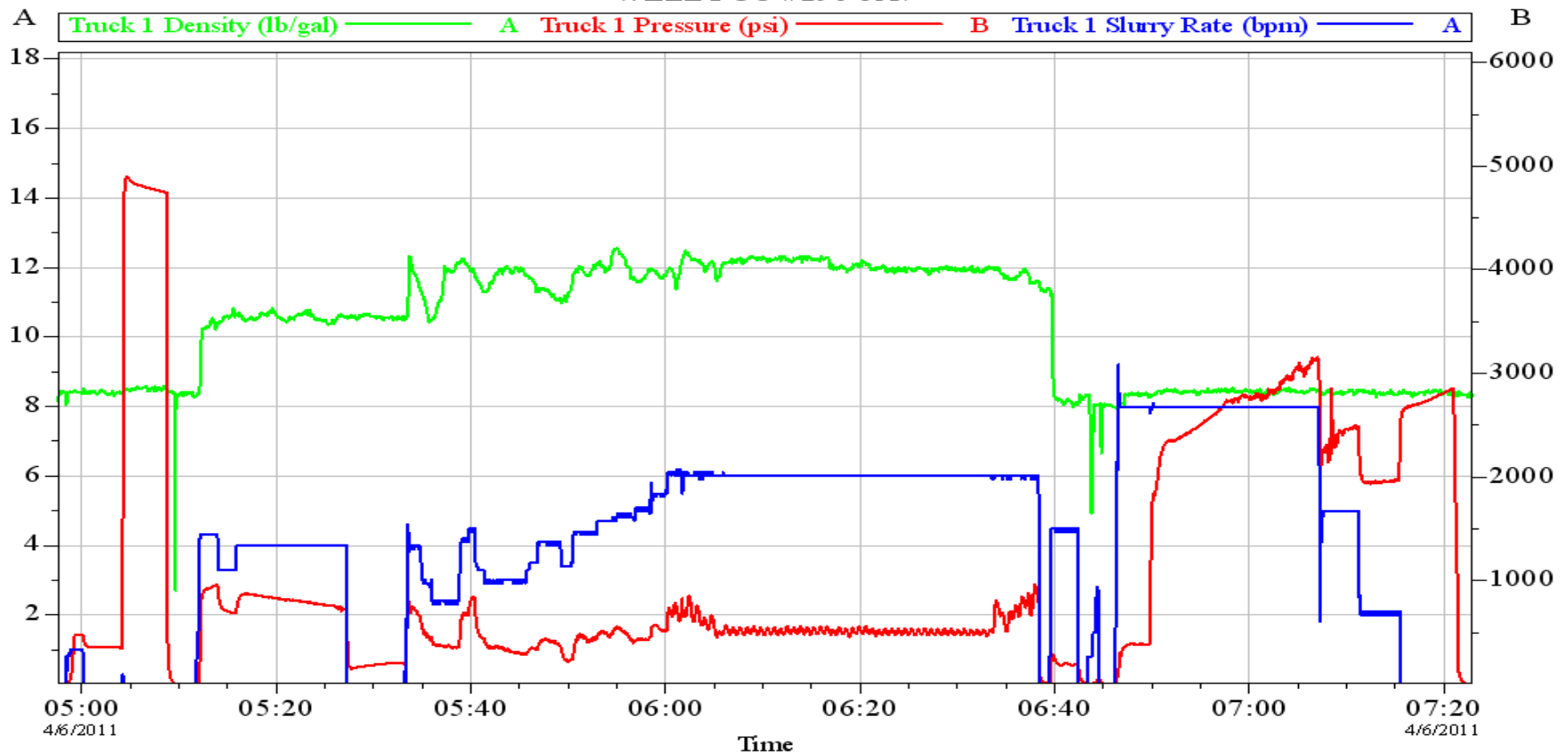
Customer: EXXONMOBIL CORPORATION
Well Description: PCU 296-5A7

Job Date: 06-Apr-2011
UWE: 05103112430000

Sales Order #: 8070020

Opti Cem v6.4.9
18-Apr-11 14:16

EXXON 321
4.5 PRODUCTION 4-6-11
WELL PCU #296-5A7



Customer: EXXONMOBIL CORPORATION
Well Description: PCU 296-5A7

Job Date: 06-Apr-2011
UWI: 05103112430000

Sales Order #: 8070020

OptiCem v6.4.9
06-Apr-11 08:01