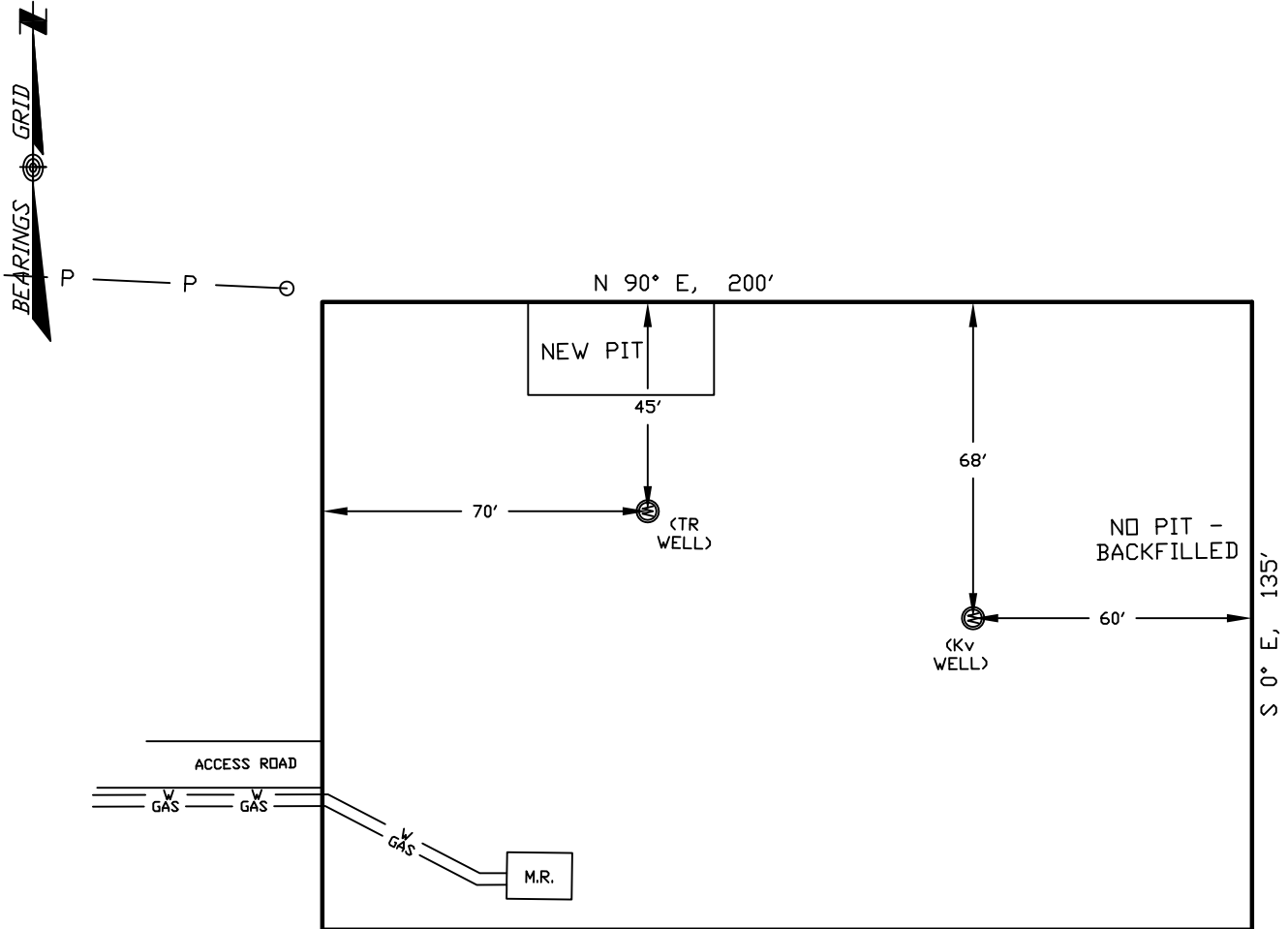


# WELLSITE/PRODUCTION EQUIPMENT LAYOUT

OPERATOR: Pioneer Natural Resources

WELL NAME: Firehawk 34-26 TR

SWSE of SECTION 26 TOWNSHIP 32 S, RANGE 66 W OF THE 6TH P.M., IN LAS ANIMAS COUNTY



Maximum ground slope:  
less than 10%

## NOTE:

MUD AND BLOW PITS WILL BE CONVERTED TO LINED EVAPORATION PITS FOR PRODUCTION.

WELLHEADS ARE TYPICALLY PCP DRIVE HEADS

## GRAPHIC SCALE



( IN FEET )

1 inch = 40 ft.

## LEGEND:

- = WELLHEAD
- = EXISTING WELLPAD
- = FENCE (4 STRAND)
- = 4" GAS GATHERING LINE
- = 2" WATER LINE
- M.R. = COMBO METER RUN AND WATER/GAS SEPERATOR
- G.D.S. = GAS DRIVE SYSTEM

April 04, 2011

Date Platted

SHIELDS SURVEY L<sup>td.</sup> C<sup>o.</sup>  
Raton, New Mexico 87740  
(575)445-1232