

# **Denver Division- Colorado**

**DJ - Hereford Ranch**

**Geary Creek 03-10H**

**Geary Creek 03-10H**

**Original Wellbore**

**Plan: APD Directional Plan**

## **Standard Planning Report**

**08 March, 2011**

# EOG Resources Inc

## Planning Report

<b>Database:</b>	EDM	<b>Local Co-ordinate Reference:</b>	Site Geary Creek 03-10H
<b>Company:</b>	Denver Division- Colorado	<b>TVD Reference:</b>	RIG @ 5212.00ft (TBD)
<b>Project:</b>	DJ - Hereford Ranch	<b>MD Reference:</b>	RIG @ 5212.00ft (TBD)
<b>Site:</b>	Geary Creek 03-10H	<b>North Reference:</b>	True
<b>Well:</b>	Geary Creek 03-10H	<b>Survey Calculation Method:</b>	Minimum Curvature
<b>Wellbore:</b>	Original Wellbore		
<b>Design:</b>	APD Directional Plan		

<b>Project</b>	DJ - Hereford Ranch, Weld County		
<b>Map System:</b>	US State Plane 1927 (Exact solution)	<b>System Datum:</b>	Mean Sea Level
<b>Geo Datum:</b>	NAD 1927 (NADCON CONUS)		
<b>Map Zone:</b>	Colorado North 501		

<b>Site</b>	Geary Creek 03-10H		
<b>Site Position:</b>		<b>Northing:</b>	556,358.48 ft
<b>From:</b>	Lat/Long	<b>Easting:</b>	2,296,816.64 ft
<b>Position Uncertainty:</b>	0.00 ft	<b>Slot Radius:</b>	"
		<b>Latitude:</b>	40° 51' 20.441 N
		<b>Longitude:</b>	104° 25' 37.420 W
		<b>Grid Convergence:</b>	0.69 deg

<b>Well</b>	Geary Creek 03-10H		
<b>Well Position</b>	<b>+N/-S</b>	0.00 ft	<b>Northing:</b>
	<b>+E/-W</b>	0.00 ft	<b>Easting:</b>
<b>Position Uncertainty</b>	0.00 ft	<b>Wellhead Elevation:</b>	ft
		<b>Latitude:</b>	40° 51' 20.441 N
		<b>Longitude:</b>	104° 25' 37.420 W
		<b>Ground Level:</b>	5,190.00 ft

<b>Wellbore</b>	Original Wellbore				
<b>Magnetics</b>	<b>Model Name</b>	<b>Sample Date</b>	<b>Declination (deg)</b>	<b>Dip Angle (deg)</b>	<b>Field Strength (nT)</b>
	IGRF200510	3/8/2011	8.71	67.49	53,450

<b>Design</b>	APD Directional Plan			
<b>Audit Notes:</b>				
<b>Version:</b>	<b>Phase:</b>	PROTOTYPE	<b>Tie On Depth:</b>	0.00
<b>Vertical Section:</b>	<b>Depth From (TVD) (ft)</b>	<b>+N/-S (ft)</b>	<b>+E/-W (ft)</b>	<b>Direction (deg)</b>
	0.00	0.00	0.00	331.66

<b>Plan Sections</b>										
Measured Depth (ft)	Inclination (deg)	Azimuth (deg)	Vertical Depth (ft)	+N/-S (ft)	+E/-W (ft)	Dogleg Rate (?/100ft)	Build Rate (?/100ft)	Turn Rate (?/100ft)	TFO (deg)	Target
0.00	0.00	0.00	0.00	0.00	0.00	0.00	0.00	0.00	0.00	
1,500.00	0.00	0.00	1,500.00	0.00	0.00	0.00	0.00	0.00	0.00	
2,916.21	14.16	317.21	2,901.83	127.79	-118.29	1.00	1.00	0.00	317.21	
7,015.31	14.16	317.21	6,876.35	863.77	-799.58	0.00	0.00	0.00	0.00	
7,647.30	90.00	317.21	7,237.00	1,203.51	-1,114.07	12.00	12.00	0.00	0.00	Geary Creek 03-10I
8,527.26	90.00	339.21	7,237.00	1,946.87	-1,574.81	2.50	0.00	2.50	90.00	Geary Creek 03-10I
12,044.81	90.00	339.21	7,237.00	5,235.37	-2,823.40	0.00	0.00	0.00	0.00	Geary Creek 03-10I

# EOG Resources Inc

## Planning Report

<b>Database:</b>	EDM	<b>Local Co-ordinate Reference:</b>	Site Geary Creek 03-10H
<b>Company:</b>	Denver Division- Colorado	<b>TVD Reference:</b>	RIG @ 5212.00ft (TBD)
<b>Project:</b>	DJ - Hereford Ranch	<b>MD Reference:</b>	RIG @ 5212.00ft (TBD)
<b>Site:</b>	Geary Creek 03-10H	<b>North Reference:</b>	True
<b>Well:</b>	Geary Creek 03-10H	<b>Survey Calculation Method:</b>	Minimum Curvature
<b>Wellbore:</b>	Original Wellbore		
<b>Design:</b>	APD Directional Plan		

### Planned Survey

Measured Depth (ft)	Inclination (deg)	Azimuth (deg)	Vertical Depth (ft)	+N/-S (ft)	+E/-W (ft)	Vertical Section (ft)	Dogleg Rate (?/100ft)	Build Rate (?/100ft)	Turn Rate (?/100ft)
0.00	0.00	0.00	0.00	0.00	0.00	0.00	0.00	0.00	0.00
100.00	0.00	0.00	100.00	0.00	0.00	0.00	0.00	0.00	0.00
200.00	0.00	0.00	200.00	0.00	0.00	0.00	0.00	0.00	0.00
300.00	0.00	0.00	300.00	0.00	0.00	0.00	0.00	0.00	0.00
400.00	0.00	0.00	400.00	0.00	0.00	0.00	0.00	0.00	0.00
500.00	0.00	0.00	500.00	0.00	0.00	0.00	0.00	0.00	0.00
600.00	0.00	0.00	600.00	0.00	0.00	0.00	0.00	0.00	0.00
700.00	0.00	0.00	700.00	0.00	0.00	0.00	0.00	0.00	0.00
800.00	0.00	0.00	800.00	0.00	0.00	0.00	0.00	0.00	0.00
900.00	0.00	0.00	900.00	0.00	0.00	0.00	0.00	0.00	0.00
1,000.00	0.00	0.00	1,000.00	0.00	0.00	0.00	0.00	0.00	0.00
1,100.00	0.00	0.00	1,100.00	0.00	0.00	0.00	0.00	0.00	0.00
1,200.00	0.00	0.00	1,200.00	0.00	0.00	0.00	0.00	0.00	0.00
1,290.00	0.00	0.00	1,290.00	0.00	0.00	0.00	0.00	0.00	0.00
<b>9-5/8"</b>									
1,300.00	0.00	0.00	1,300.00	0.00	0.00	0.00	0.00	0.00	0.00
1,400.00	0.00	0.00	1,400.00	0.00	0.00	0.00	0.00	0.00	0.00
1,500.00	0.00	0.00	1,500.00	0.00	0.00	0.00	0.00	0.00	0.00
1,600.00	1.00	317.21	1,599.99	0.64	-0.59	0.85	1.00	1.00	0.00
1,700.00	2.00	317.21	1,699.96	2.56	-2.37	3.38	1.00	1.00	0.00
1,800.00	3.00	317.21	1,799.86	5.76	-5.33	7.60	1.00	1.00	0.00
1,900.00	4.00	317.21	1,899.68	10.24	-9.48	13.52	1.00	1.00	0.00
2,000.00	5.00	317.21	1,999.37	16.00	-14.81	21.11	1.00	1.00	0.00
2,100.00	6.00	317.21	2,098.90	23.03	-21.32	30.39	1.00	1.00	0.00
2,200.00	7.00	317.21	2,198.26	31.34	-29.01	41.36	1.00	1.00	0.00
2,300.00	8.00	317.21	2,297.40	40.92	-37.88	54.00	1.00	1.00	0.00
2,400.00	9.00	317.21	2,396.30	51.77	-47.92	68.31	1.00	1.00	0.00
2,500.00	10.00	317.21	2,494.93	63.88	-59.13	84.29	1.00	1.00	0.00
2,600.00	11.00	317.21	2,593.26	77.25	-71.51	101.94	1.00	1.00	0.00
2,700.00	12.00	317.21	2,691.25	91.88	-85.05	121.24	1.00	1.00	0.00
2,800.00	13.00	317.21	2,788.87	107.76	-99.76	142.20	1.00	1.00	0.00
2,900.00	14.00	317.21	2,886.11	124.90	-115.61	164.81	1.00	1.00	0.00
2,916.21	14.16	317.21	2,901.83	127.79	-118.29	168.63	1.00	1.00	0.00
3,000.00	14.16	317.21	2,983.08	142.83	-132.22	188.48	0.00	0.00	0.00
3,100.00	14.16	317.21	3,080.04	160.79	-148.84	212.17	0.00	0.00	0.00
3,200.00	14.16	317.21	3,177.00	178.74	-165.46	235.86	0.00	0.00	0.00
3,300.00	14.16	317.21	3,273.96	196.70	-182.08	259.55	0.00	0.00	0.00
3,400.00	14.16	317.21	3,370.92	214.65	-198.70	283.25	0.00	0.00	0.00
3,500.00	14.16	317.21	3,467.88	232.61	-215.32	306.94	0.00	0.00	0.00
3,600.00	14.16	317.21	3,564.84	250.56	-231.94	330.63	0.00	0.00	0.00
3,700.00	14.16	317.21	3,661.80	268.52	-248.56	354.32	0.00	0.00	0.00
3,800.00	14.16	317.21	3,758.76	286.47	-265.18	378.02	0.00	0.00	0.00
3,900.00	14.16	317.21	3,855.72	304.43	-281.80	401.71	0.00	0.00	0.00
4,000.00	14.16	317.21	3,952.68	322.38	-298.42	425.40	0.00	0.00	0.00
4,100.00	14.16	317.21	4,049.65	340.34	-315.04	449.09	0.00	0.00	0.00
4,200.00	14.16	317.21	4,146.61	358.29	-331.66	472.79	0.00	0.00	0.00
4,300.00	14.16	317.21	4,243.57	376.25	-348.29	496.48	0.00	0.00	0.00
4,400.00	14.16	317.21	4,340.53	394.20	-364.91	520.17	0.00	0.00	0.00
4,500.00	14.16	317.21	4,437.49	412.16	-381.53	543.86	0.00	0.00	0.00
4,600.00	14.16	317.21	4,534.45	430.11	-398.15	567.56	0.00	0.00	0.00
4,700.00	14.16	317.21	4,631.41	448.06	-414.77	591.25	0.00	0.00	0.00
4,800.00	14.16	317.21	4,728.37	466.02	-431.39	614.94	0.00	0.00	0.00
4,900.00	14.16	317.21	4,825.33	483.97	-448.01	638.63	0.00	0.00	0.00

# EOG Resources Inc

## Planning Report

<b>Database:</b>	EDM	<b>Local Co-ordinate Reference:</b>	Site Geary Creek 03-10H
<b>Company:</b>	Denver Division- Colorado	<b>TVD Reference:</b>	RIG @ 5212.00ft (TBD)
<b>Project:</b>	DJ - Hereford Ranch	<b>MD Reference:</b>	RIG @ 5212.00ft (TBD)
<b>Site:</b>	Geary Creek 03-10H	<b>North Reference:</b>	True
<b>Well:</b>	Geary Creek 03-10H	<b>Survey Calculation Method:</b>	Minimum Curvature
<b>Wellbore:</b>	Original Wellbore		
<b>Design:</b>	APD Directional Plan		

### Planned Survey

Measured Depth (ft)	Inclination (deg)	Azimuth (deg)	Vertical Depth (ft)	+N/-S (ft)	+E/-W (ft)	Vertical Section (ft)	Dogleg Rate (?/100ft)	Build Rate (?/100ft)	Turn Rate (?/100ft)
5,000.00	14.16	317.21	4,922.29	501.93	-464.63	662.32	0.00	0.00	0.00
5,100.00	14.16	317.21	5,019.25	519.88	-481.25	686.02	0.00	0.00	0.00
5,200.00	14.16	317.21	5,116.21	537.84	-497.87	709.71	0.00	0.00	0.00
5,300.00	14.16	317.21	5,213.17	555.79	-514.49	733.40	0.00	0.00	0.00
5,400.00	14.16	317.21	5,310.13	573.75	-531.11	757.09	0.00	0.00	0.00
5,500.00	14.16	317.21	5,407.10	591.70	-547.73	780.79	0.00	0.00	0.00
5,600.00	14.16	317.21	5,504.06	609.66	-564.35	804.48	0.00	0.00	0.00
5,700.00	14.16	317.21	5,601.02	627.61	-580.97	828.17	0.00	0.00	0.00
5,800.00	14.16	317.21	5,697.98	645.57	-597.59	851.86	0.00	0.00	0.00
5,900.00	14.16	317.21	5,794.94	663.52	-614.21	875.56	0.00	0.00	0.00
6,000.00	14.16	317.21	5,891.90	681.48	-630.83	899.25	0.00	0.00	0.00
6,100.00	14.16	317.21	5,988.86	699.43	-647.45	922.94	0.00	0.00	0.00
6,200.00	14.16	317.21	6,085.82	717.39	-664.07	946.63	0.00	0.00	0.00
6,300.00	14.16	317.21	6,182.78	735.34	-680.69	970.32	0.00	0.00	0.00
6,400.00	14.16	317.21	6,279.74	753.30	-697.31	994.02	0.00	0.00	0.00
6,500.00	14.16	317.21	6,376.70	771.25	-713.94	1,017.71	0.00	0.00	0.00
6,600.00	14.16	317.21	6,473.66	789.20	-730.56	1,041.40	0.00	0.00	0.00
6,700.00	14.16	317.21	6,570.62	807.16	-747.18	1,065.09	0.00	0.00	0.00
6,800.00	14.16	317.21	6,667.59	825.11	-763.80	1,088.79	0.00	0.00	0.00
6,900.00	14.16	317.21	6,764.55	843.07	-780.42	1,112.48	0.00	0.00	0.00
7,000.00	14.16	317.21	6,861.51	861.02	-797.04	1,136.17	0.00	0.00	0.00
7,015.31	14.16	317.21	6,876.35	863.77	-799.58	1,139.80	0.00	0.00	0.00
7,100.00	24.32	317.21	6,956.20	884.23	-818.52	1,166.79	12.00	12.00	0.00
7,200.00	36.32	317.21	7,042.37	921.21	-852.75	1,215.59	12.00	12.00	0.00
7,300.00	48.32	317.21	7,116.16	970.54	-898.41	1,280.68	12.00	12.00	0.00
7,400.00	60.32	317.21	7,174.38	1,030.04	-953.49	1,359.20	12.00	12.00	0.00
7,500.00	72.32	317.21	7,214.46	1,097.12	-1,015.59	1,447.72	12.00	12.00	0.00
7,600.00	84.32	317.21	7,234.66	1,168.86	-1,082.00	1,542.38	12.00	12.00	0.00
7,647.30	90.00	317.21	7,237.00	1,203.51	-1,114.07	1,588.10	12.00	12.00	0.00
<b>7" - Geary Creek 03-10H (ICP)</b>									
7,700.00	90.00	318.53	7,237.00	1,242.60	-1,149.43	1,639.29	2.50	0.00	2.50
7,800.00	90.00	321.03	7,237.00	1,318.94	-1,214.00	1,737.13	2.50	0.00	2.50
7,900.00	90.00	323.53	7,237.00	1,398.04	-1,275.18	1,835.79	2.50	0.00	2.50
8,000.00	90.00	326.03	7,237.00	1,479.72	-1,332.85	1,935.06	2.50	0.00	2.50
8,100.00	90.00	328.53	7,237.00	1,563.85	-1,386.90	2,034.76	2.50	0.00	2.50
8,200.00	90.00	331.03	7,237.00	1,650.25	-1,437.23	2,134.70	2.50	0.00	2.50
8,300.00	90.00	333.53	7,237.00	1,738.76	-1,483.75	2,234.68	2.50	0.00	2.50
8,400.00	90.00	336.03	7,237.00	1,829.22	-1,526.36	2,334.53	2.50	0.00	2.50
8,500.00	90.00	338.53	7,237.00	1,921.45	-1,564.98	2,434.04	2.50	0.00	2.50
8,527.26	90.00	339.21	7,237.00	1,946.87	-1,574.81	2,461.08	2.50	0.00	2.50
8,600.00	90.00	339.21	7,237.00	2,014.88	-1,600.63	2,533.19	0.00	0.00	0.00
8,700.00	90.00	339.21	7,237.00	2,108.37	-1,636.12	2,632.33	0.00	0.00	0.00
8,800.00	90.00	339.21	7,237.00	2,201.86	-1,671.62	2,731.46	0.00	0.00	0.00
8,900.00	90.00	339.21	7,237.00	2,295.35	-1,707.12	2,830.60	0.00	0.00	0.00
9,000.00	90.00	339.21	7,237.00	2,388.83	-1,742.61	2,929.73	0.00	0.00	0.00
9,100.00	90.00	339.21	7,237.00	2,482.32	-1,778.11	3,028.86	0.00	0.00	0.00
9,200.00	90.00	339.21	7,237.00	2,575.81	-1,813.61	3,128.00	0.00	0.00	0.00
9,300.00	90.00	339.21	7,237.00	2,669.30	-1,849.10	3,227.13	0.00	0.00	0.00
9,400.00	90.00	339.21	7,237.00	2,762.79	-1,884.60	3,326.26	0.00	0.00	0.00
9,500.00	90.00	339.21	7,237.00	2,856.27	-1,920.09	3,425.40	0.00	0.00	0.00
9,600.00	90.00	339.21	7,237.00	2,949.76	-1,955.59	3,524.53	0.00	0.00	0.00
9,700.00	90.00	339.21	7,237.00	3,043.25	-1,991.09	3,623.67	0.00	0.00	0.00
9,800.00	90.00	339.21	7,237.00	3,136.74	-2,026.58	3,722.80	0.00	0.00	0.00

# EOG Resources Inc

## Planning Report

<b>Database:</b>	EDM	<b>Local Co-ordinate Reference:</b>	Site Geary Creek 03-10H
<b>Company:</b>	Denver Division- Colorado	<b>TVD Reference:</b>	RIG @ 5212.00ft (TBD)
<b>Project:</b>	DJ - Hereford Ranch	<b>MD Reference:</b>	RIG @ 5212.00ft (TBD)
<b>Site:</b>	Geary Creek 03-10H	<b>North Reference:</b>	True
<b>Well:</b>	Geary Creek 03-10H	<b>Survey Calculation Method:</b>	Minimum Curvature
<b>Wellbore:</b>	Original Wellbore		
<b>Design:</b>	APD Directional Plan		

### Planned Survey

Measured Depth (ft)	Inclination (deg)	Azimuth (deg)	Vertical Depth (ft)	+N/-S (ft)	+E/-W (ft)	Vertical Section (ft)	Dogleg Rate (?/100ft)	Build Rate (?/100ft)	Turn Rate (?/100ft)
9,900.00	90.00	339.21	7,237.00	3,230.23	-2,062.08	3,821.93	0.00	0.00	0.00
10,000.00	90.00	339.21	7,237.00	3,323.71	-2,097.57	3,921.07	0.00	0.00	0.00
10,100.00	90.00	339.21	7,237.00	3,417.20	-2,133.07	4,020.20	0.00	0.00	0.00
10,200.00	90.00	339.21	7,237.00	3,510.69	-2,168.57	4,119.34	0.00	0.00	0.00
10,300.00	90.00	339.21	7,237.00	3,604.18	-2,204.06	4,218.47	0.00	0.00	0.00
10,400.00	90.00	339.21	7,237.00	3,697.67	-2,239.56	4,317.60	0.00	0.00	0.00
10,500.00	90.00	339.21	7,237.00	3,791.16	-2,275.05	4,416.74	0.00	0.00	0.00
10,600.00	90.00	339.21	7,237.00	3,884.64	-2,310.55	4,515.87	0.00	0.00	0.00
10,700.00	90.00	339.21	7,237.00	3,978.13	-2,346.05	4,615.00	0.00	0.00	0.00
10,800.00	90.00	339.21	7,237.00	4,071.62	-2,381.54	4,714.14	0.00	0.00	0.00
10,900.00	90.00	339.21	7,237.00	4,165.11	-2,417.04	4,813.27	0.00	0.00	0.00
11,000.00	90.00	339.21	7,237.00	4,258.60	-2,452.53	4,912.41	0.00	0.00	0.00
11,100.00	90.00	339.21	7,237.00	4,352.08	-2,488.03	5,011.54	0.00	0.00	0.00
11,200.00	90.00	339.21	7,237.00	4,445.57	-2,523.53	5,110.67	0.00	0.00	0.00
11,300.00	90.00	339.21	7,237.00	4,539.06	-2,559.02	5,209.81	0.00	0.00	0.00
11,400.00	90.00	339.21	7,237.00	4,632.55	-2,594.52	5,308.94	0.00	0.00	0.00
11,500.00	90.00	339.21	7,237.00	4,726.04	-2,630.01	5,408.08	0.00	0.00	0.00
11,600.00	90.00	339.21	7,237.00	4,819.52	-2,665.51	5,507.21	0.00	0.00	0.00
11,700.00	90.00	339.21	7,237.00	4,913.01	-2,701.01	5,606.34	0.00	0.00	0.00
11,800.00	90.00	339.21	7,237.00	5,006.50	-2,736.50	5,705.48	0.00	0.00	0.00
11,900.00	90.00	339.21	7,237.00	5,099.99	-2,772.00	5,804.61	0.00	0.00	0.00
12,000.00	90.00	339.21	7,237.00	5,193.48	-2,807.49	5,903.74	0.00	0.00	0.00
12,044.81	90.00	339.21	7,237.00	5,235.37	-2,823.40	5,948.17	0.00	0.00	0.00
4 1/2" - Geary Creek 03-10H (BHL)									

### Targets

#### Target Name

- hit/miss target	Dip Angle (deg)	Dip Dir. (deg)	TVD (ft)	+N/-S (ft)	+E/-W (ft)	Northing (ft)	Easting (ft)	Latitude	Longitude
- Shape									
Geary Creek 03-10H (	0.00	0.00	7,237.00	5,235.37	-2,823.40	561,559.30	2,293,930.11	40° 52' 12.169 N	104° 26' 14.168 W
- plan hits target center									
- Point									

### Casing Points

Measured Depth (ft)	Vertical Depth (ft)	Name	Casing Diameter (")	Hole Diameter (")
1,290.00	1,290.00	9-5/8"	9-5/8	13-1/2
7,647.30	7,237.00	7"	7	8-3/4
12,044.81	7,237.00	4 1/2"	4-1/2	6

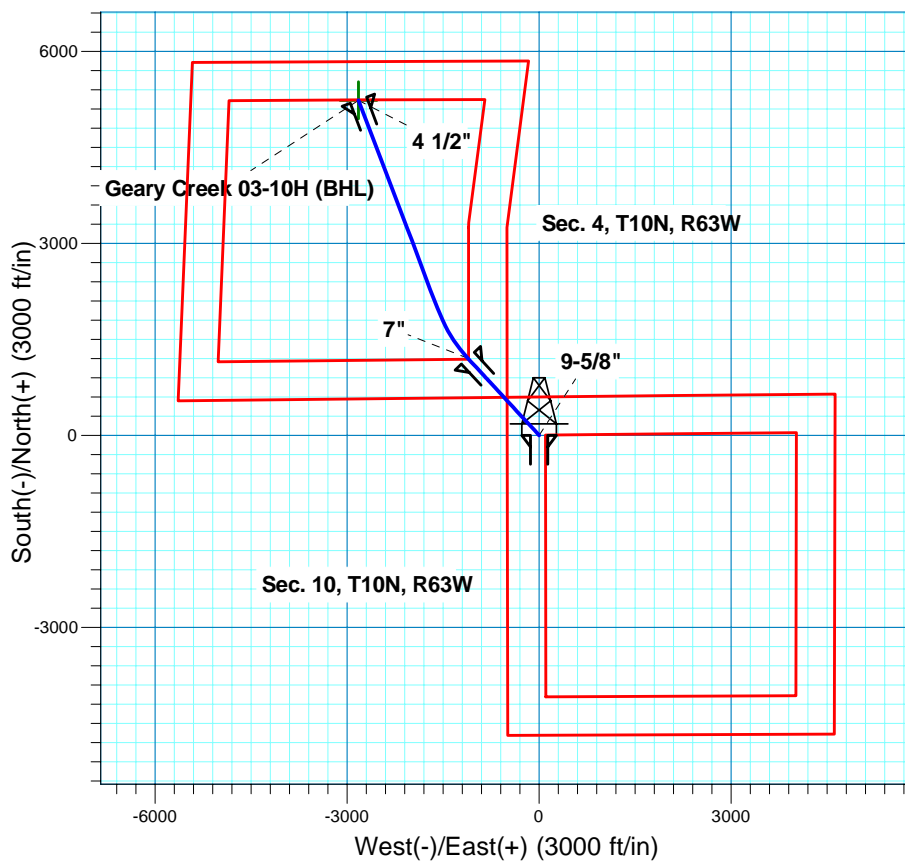
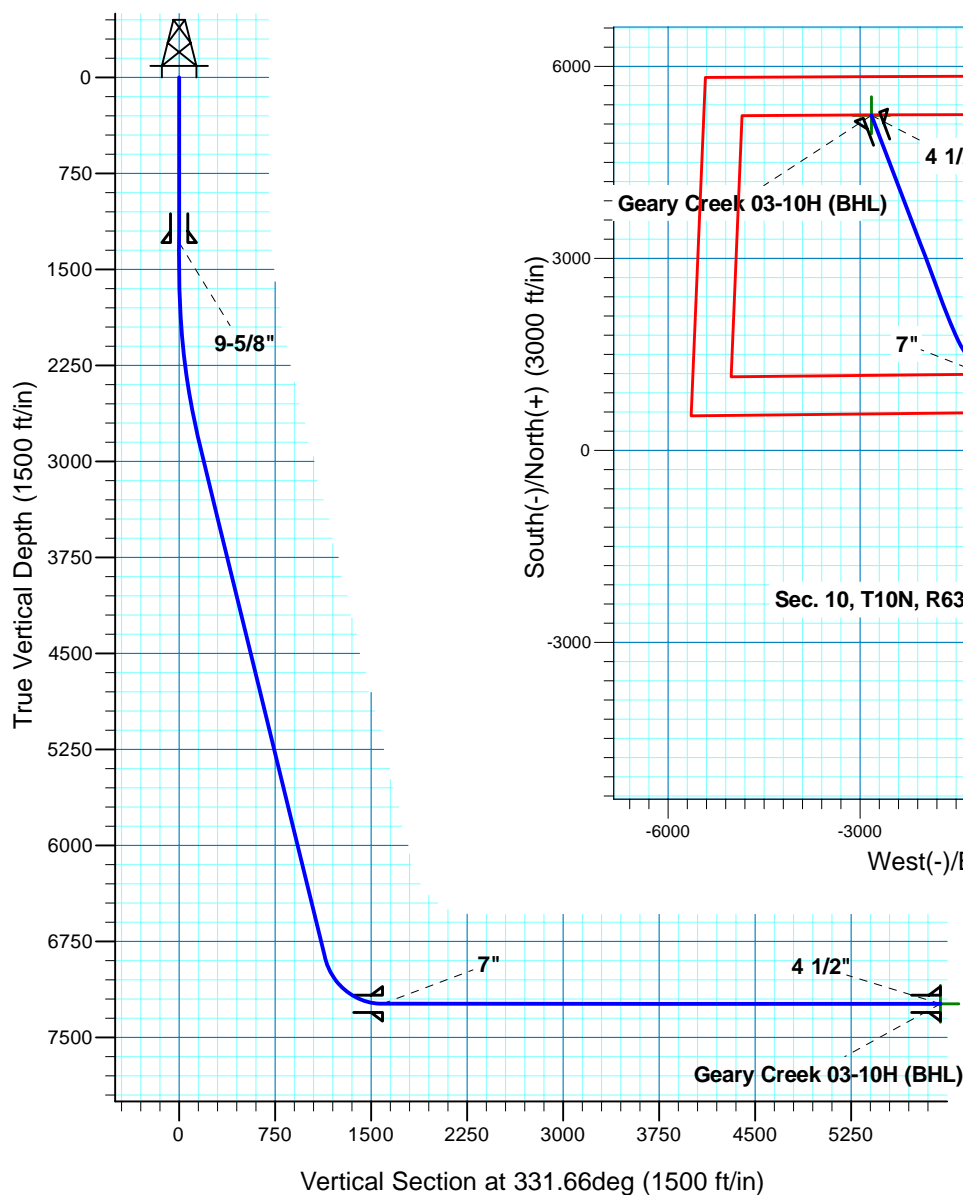
# Geary Creek 03-10H

## Section 10 T10N R63W

### Weld County, CO

#### Surface Location

NAD 1927 (NADCON CONUS) Colorado North 501  
 Ground Elevation: 5190.00 RIG @ 5212.00ft (TBD)  
 Northing Easting Latitude Longitude  
 556358.48 2296816.64 40° 51' 20.441 N 104° 25' 37.420 W



**T M**  
 Azimuths to True North  
 Magnetic North: 8.71°  
 Magnetic Field  
 Strength: 53450.4snT  
 Dip Angle: 67.49°  
 Date: 3/8/2011  
 Model: IGRF200510

Project: DJ - Hereford Ranch  
 Site: Geary Creek 03-10H  
 Well: Geary Creek 03-10H  
 Plan: APD Directional Plan

#### SECTION DETAILS

Sec	MD	Inc	Azi	TVD	+N/-S	+E/-W	DLeg	TFace	VSec	Target
1	0.00	0.00	0.00	0.00	0.00	0.00	0.00	0.00	0.00	
2	1500.00	0.00	0.00	1500.00	0.00	0.00	0.00	0.00	0.00	
3	2916.21	14.16	317.21	2901.83	127.79	-118.29	1.00	317.21	168.63	
4	7015.31	14.16	317.21	6876.35	863.77	-799.58	0.00	0.00	1139.80	
5	7647.30	90.00	317.21	7237.00	1203.51	-1114.07	12.00	0.00	1588.10	Geary Creek 03-10H (ICP)
6	8527.26	90.00	339.21	7237.00	1946.87	-1574.81	2.50	90.00	2461.08	Geary Creek 03-10H (BHL)
7	12044.81	90.00	339.21	7237.00	5235.37	-2823.40	0.00	0.00	5948.17	Geary Creek 03-10H (BHL)

#### TARGET DETAILS

Name	TVD	+N/-S	+E/-W	Northing	Easting	Latitude	Longitude	Shape
Geary Creek 03-10H (BHL)	7237.00	5235.37	-2823.40	561559.30	2293930.11	40° 52' 12.169 N	104° 26' 14.168 W	Point