

T10N, R63W, 6th P.M.

EOG RESOURCES, INC.

Well location, (SURFACE LOCATION) GEARY CREEK #03-10H, located as shown in the NW 1/4 NW 1/4 of Section 10, T10N, R63W, 6th P.M., Weld County, Colorado.

BASIS OF ELEVATION

SPOT ELEVATION LOCATED AT THE NORTHEAST CORNER OF SECTION 1, T11N, R63W, 6th P.M. TAKEN FROM THE HEREFORD, QUADRANGLE, COLORADO, WELD COUNTY, 7.5 MINUTE QUAD (TOPOGRAPHIC MAP) PUBLISHED BY THE UNITED STATES DEPARTMENT OF THE INTERIOR, GEOLOGICAL SURVEY. SAID ELEVATION IS MARKED AS BEING 5352 FEET.

BASIS OF BEARINGS

BASIS OF BEARINGS IS A G.P.S. OBSERVATION.



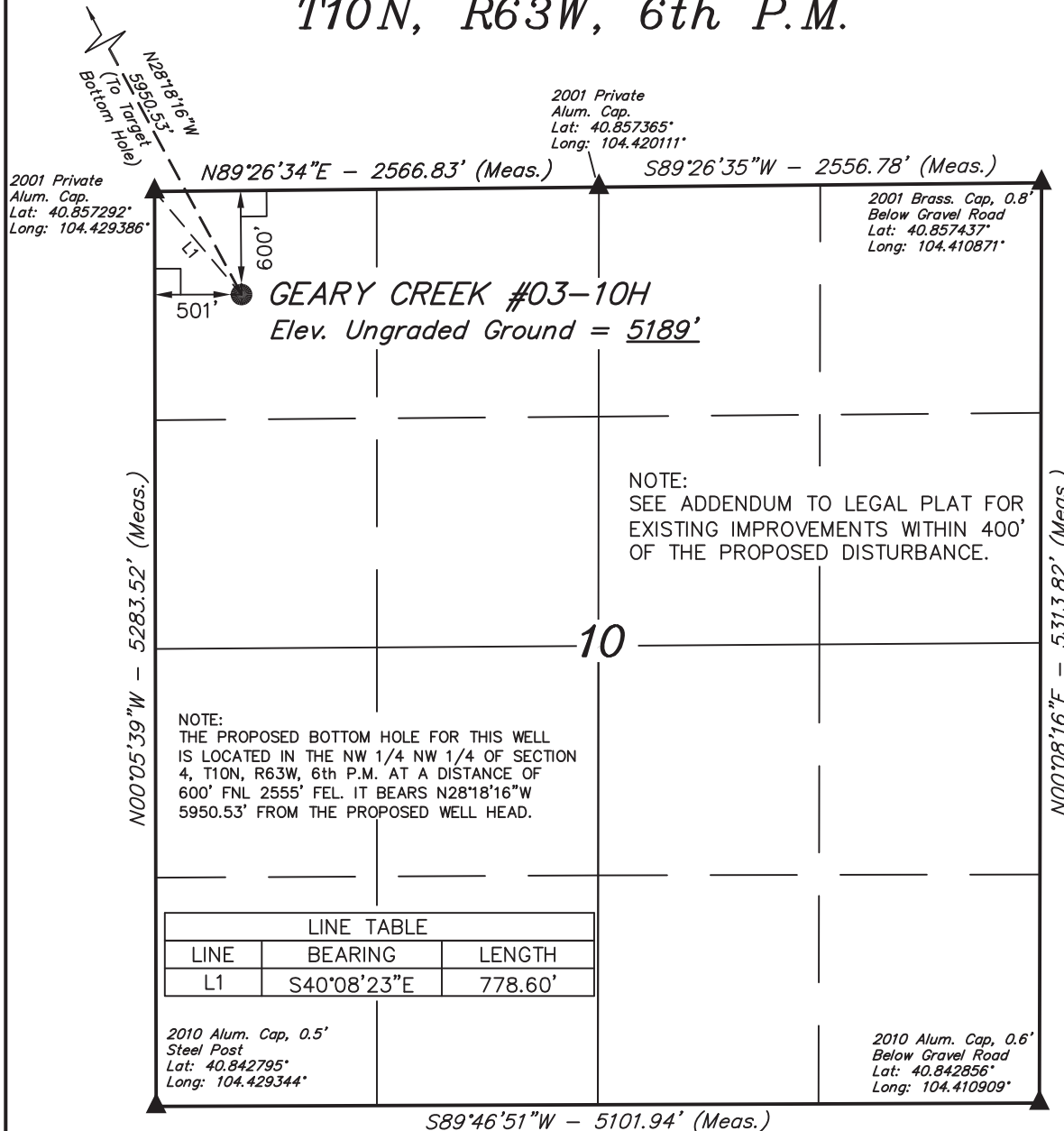
SCALE

CERTIFICATE

THIS IS TO CERTIFY THAT THE ABOVE PLAT WAS PREPARED FROM FIELD NOTES OF ACTUAL SURVEYS MADE BY ME OR UNDER MY SUPERVISION AND THAT THE SAME ARE TRUE AND CORRECT TO THE BEST OF MY KNOWLEDGE AND BELIEF.

REGISTERED LAND SURVEYOR  
REGISTRATION NO. 17492  
STATE OF COLORADO

UINTAH ENGINEERING & LAND SURVEYING  
85 SOUTH 200 EAST - VERNAL, UTAH 84078  
(435) 789-1017



S89°46'51\"W - 5101.94' (Meas.)

PDOP=1.2

# LEGEND:

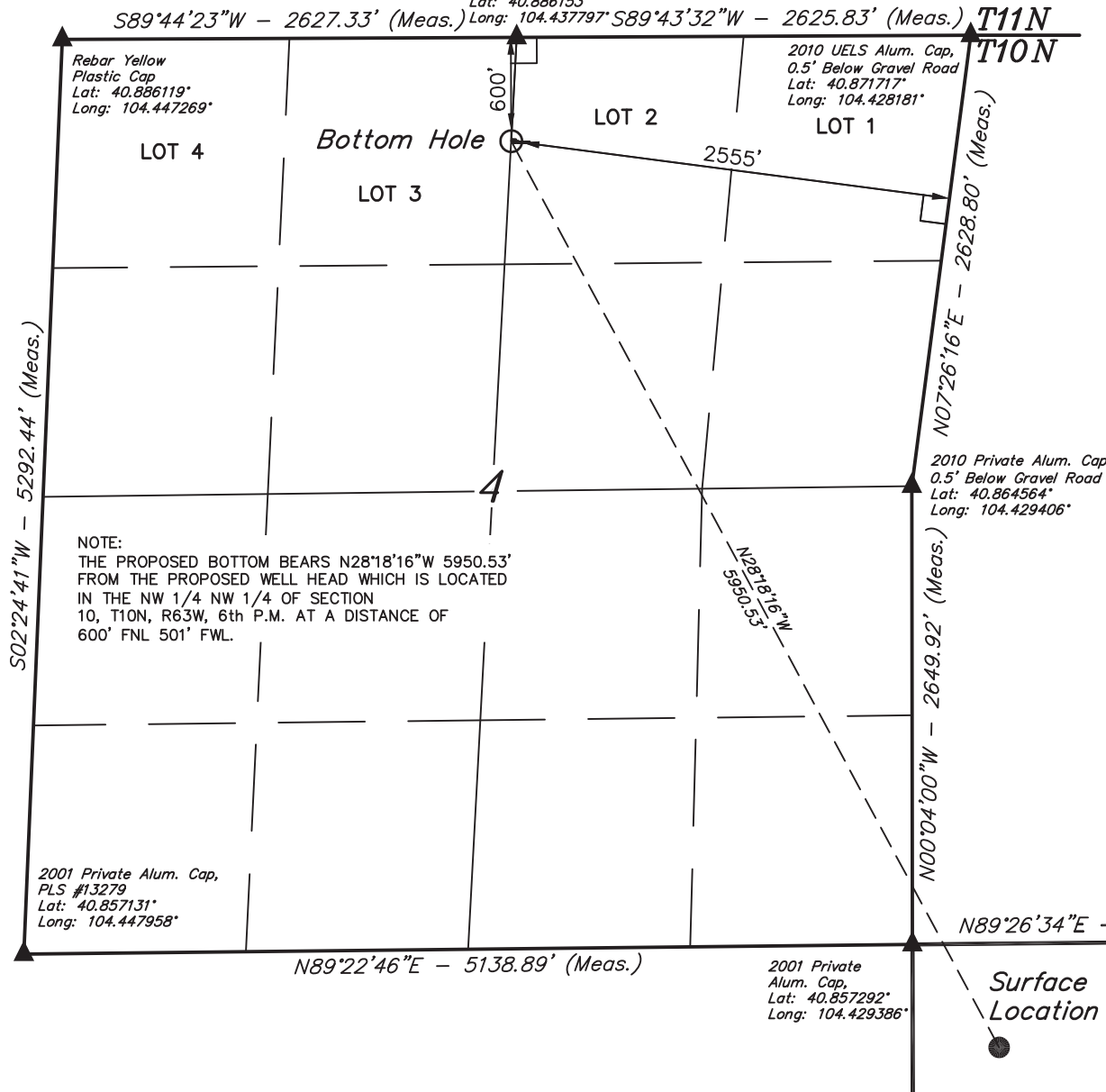
- └─┘ = 90° SYMBOL
- = PROPOSED WELL HEAD.
- ▲ = SECTION CORNERS LOCATED.

NAD 83 (SURFACE LOCATION)  
LATITUDE = 40°51'20.38\" (40.855661)  
LONGITUDE = 104°25'39.26\" (104.427572)  
NAD 27 (SURFACE LOCATION)  
LATITUDE = 40°51'20.44\" (40.855678)  
LONGITUDE = 104°25'37.42\" (104.427061)  
STATE PLANE NAD 83  
N: 1556359.95 E: 3296667.47  
STATE PLANE NAD 27  
N: 556358.40 E: 2296816.76

SCALE 1\" = 1000'	DATE SURVEYED: 01-14-11	DATE DRAWN: 01-31-11
PARTY G.M. J.R. K.O.	REFERENCES G.L.O. PLAT	
WEATHER COLD	FILE EOG RESOURCES, INC.	

**T10N, R63W, 6th P.M.**

1921 Brass Cap,  
1.5' Below Road  
Lat: 40.886153°  
Long: 104.437797°



**EOG RESOURCES, INC.**

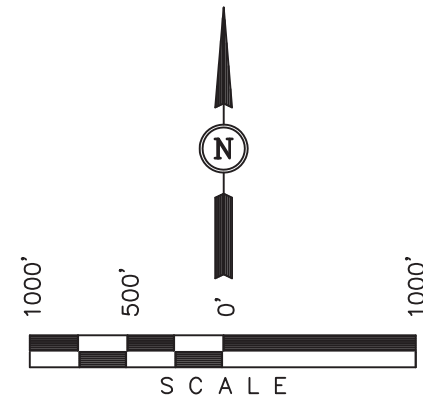
Well location, (BOTTOM HOLE) GEARY CREEK #03-10H, located as shown in LOT 2 of Section 4, T10N, R63W, 6th P.M., Weld County, Colorado.

### BASIS OF ELEVATION

SPOT ELEVATION LOCATED AT THE NORTHEAST CORNER OF SECTION 1, T11N, R63W, 6th P.M. TAKEN FROM THE HEREFORD, QUADRANGLE, COLORADO, WELD COUNTY, 7.5 MINUTE QUAD (TOPOGRAPHIC MAP) PUBLISHED BY THE UNITED STATES DEPARTMENT OF THE INTERIOR, GEOLOGICAL SURVEY. SAID ELEVATION IS MARKED AS BEING 5352 FEET.

### BASIS OF BEARINGS

BASIS OF BEARINGS IS A G.P.S. OBSERVATION.



### CERTIFICATE

THIS IS TO CERTIFY THAT THE ABOVE PLAT WAS PREPARED FROM FIELD NOTES OF ACTUAL SURVEYS MADE BY ME OR UNDER MY SUPERVISION AND THAT THE SAME ARE TRUE AND CORRECT TO THE BEST OF MY KNOWLEDGE AND BELIEF.

REGISTERED LAND SURVEYOR  
REGISTRATION NO. 17492  
STATE OF COLORADO

### LEGEND:

- └─┘ = 90° SYMBOL
- = PROPOSED WELL HEAD.
- ▲ = SECTION CORNERS LOCATED.

<b>NAD 83 (TARGET BOTTOM HOLE)</b>	
LATITUDE =	40°52'12.11" (40.870031)
LONGITUDE =	104°26'16.02" (104.437783)
<b>NAD 27 (TARGET BOTTOM HOLE)</b>	
LATITUDE =	40°52'12.17" (40.870047)
LONGITUDE =	104°26'14.17" (104.437269)
<b>STATE PLANE NAD 83</b>	
N: 1561561.49	E: 3293780.33
<b>STATE PLANE NAD 27</b>	
N: 561559.86	E: 2293929.66

**UINTAH ENGINEERING & LAND SURVEYING**  
85 SOUTH 200 EAST - VERNAL, UTAH 84078  
(435) 789-1017

SCALE 1" = 1000'	DATE SURVEYED: 01-14-11	DATE DRAWN: 01-31-11
PARTY G.M. J.R. K.O.	REFERENCES G.L.O. PLAT	
WEATHER COLD	FILE EOG RESOURCES, INC.	