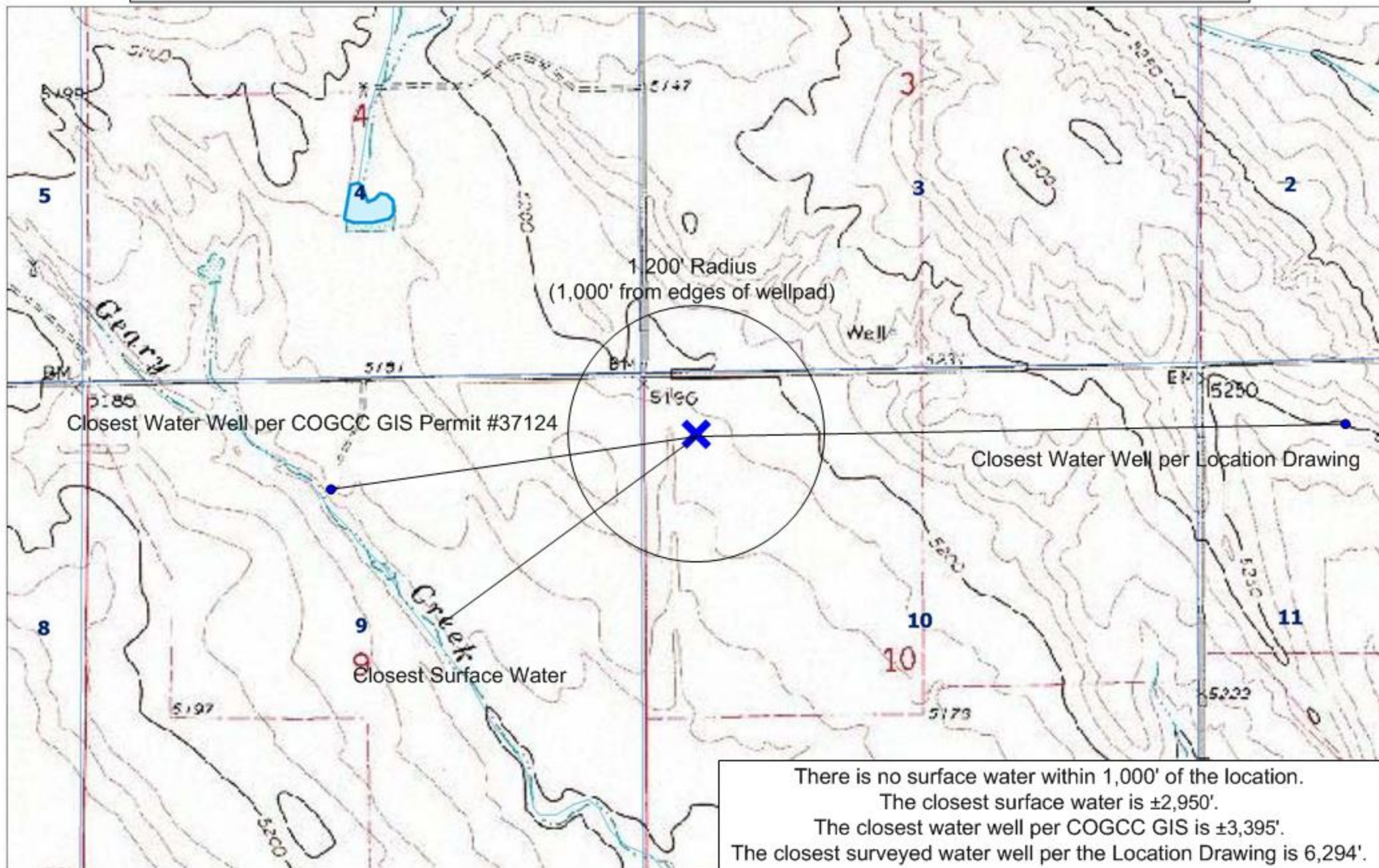
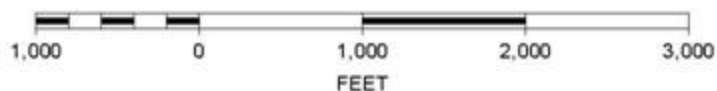


Geary Creek 03-10H & 06-10H Hydrology Map



There is no surface water within 1,000' of the location.
The closest surface water is $\pm 2,950'$.
The closest water well per COGCC GIS is $\pm 3,395'$.
The closest surveyed water well per the Location Drawing is 6,294'.

SCALE 1 : 14,135



N

