

 400' Setback from Disturbance

 Proposed Disturbed Area

SW1/4 NW1/4, Section 24, T. 11 S, R. 90 W  
NE1/4 SE1/4, Section 23, T. 11 S, R. 90 W

State Plane CO Central NAD 83  
SCALE: 1" = 200'  
DATE: May 2011

0 100 200 400  
Feet



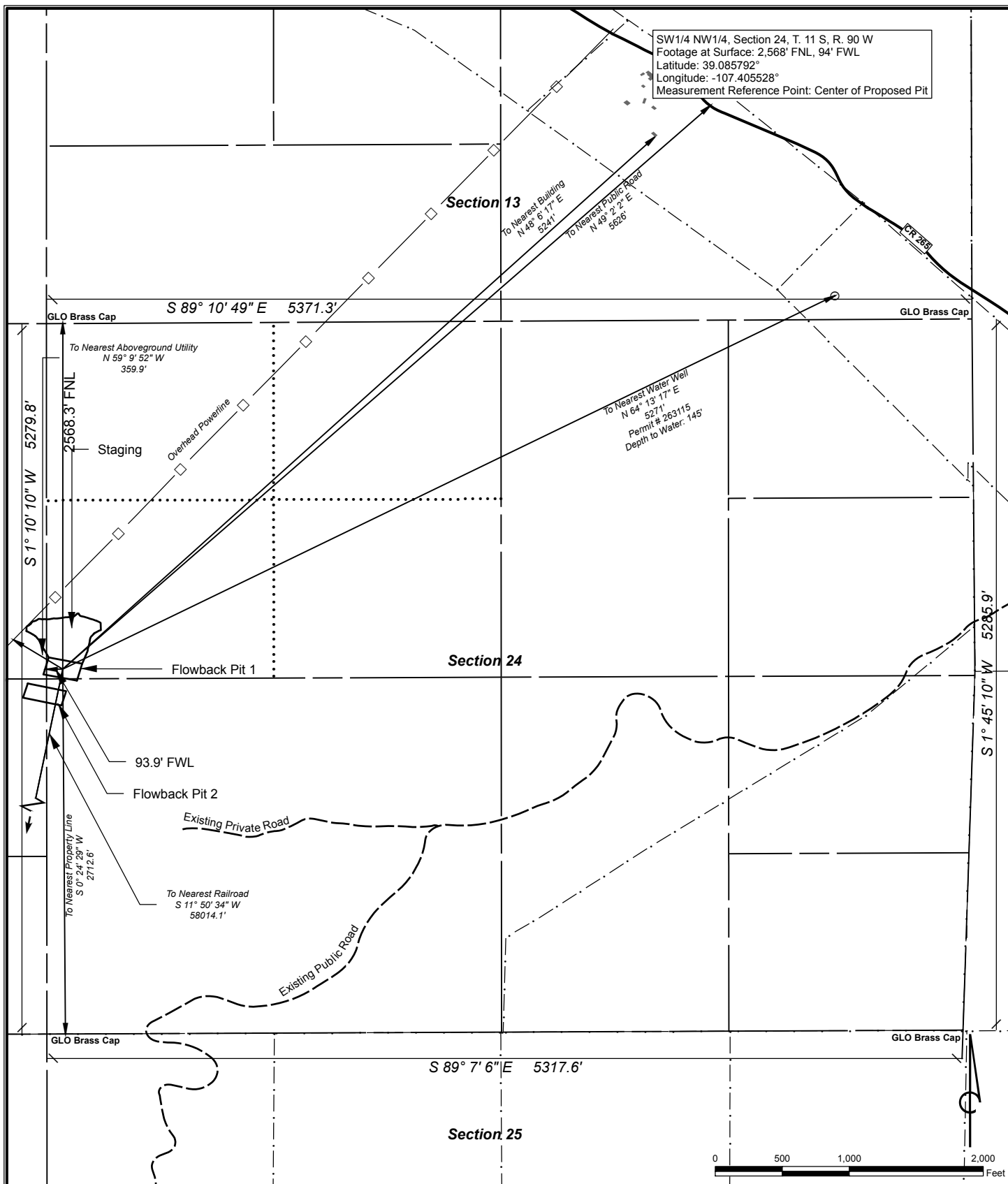
**SG Interests**  
PO Box 26  
Montrose, CO 81402  
970-252-0696


**Bull Mountain Unit**

T. 11 S, R. 90 W, Sections 23 & 24

McIntyre Flowback Pits 1 & 2  
400' Setback



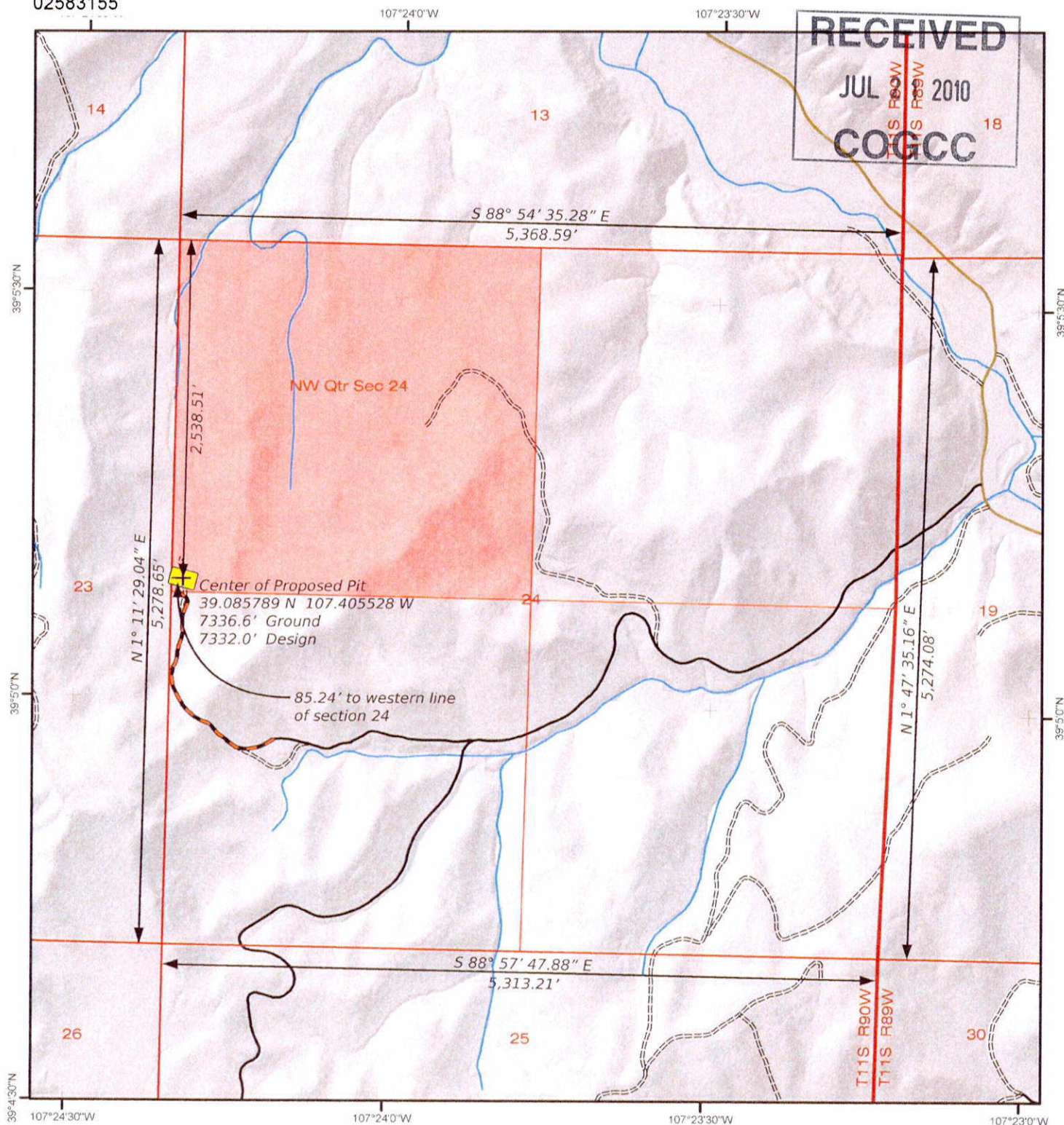


Visible Improvements to Pit Center			Current Land Use: NON-CROP LAND: Rangeland	 <b>SG Interests</b> PO Box 26 Montrose, CO 81402 970-252-0696
Description	Bearing	Distance (Ft.)		
Building	N 48° 6' 17" E	5,241	NAD 83 Datum SCALE: 1" = 1,000' DATE: 11.11.2010	<b>Bull Mountain Unit</b> T. 11 S, R. 90 W, Sections 23 & 24 <b>McIntyre Flowback Pit 1</b> <b>LOCATION</b>
Public Road	N 49° 2' 2" E	5,626		
Railroad	S 11° 50' 34" W	58,014		
Aboveground Utility	N 59° 9' 52" W	360		
Property Line	S 0° 24' 29" E	2,713		
Well	N 64° 13' 17" E	5,271		



02583155

Location Map



## LEGEND

- Proposed Pit
- Proposed Access Road
- County Road
- Improved Road
- Unimproved Road
- Township Boundary
- Section Line
- Quarter-Section Line
- Stream

## Note:

Existing ground elevation interpolated from LIDAR base data. LIDAR data acquired in November 2008 with 1-meter posting resulting in < 6 in. vertical RMSE (Root Mean Square Error). Elevations based on NAVD 88 vertical datum.

## Disclaimer:

This product is for informational purposes and may not have been prepared for, or be suitable for legal, engineering, or surveying purposes. Users of this information should review or consult the primary data and information sources to ascertain the usability of the information. The maps are distributed "AS-IS" without warranties of any kind, either expressed or implied, including but not limited to warranties of suitability to a particular purpose or use.

McIntyre Flowback Pit #1

Location Map  
07.15.2010

CO 06 11S 89W SEC24  
Baseline: 40° 0' 7" N / Gunnison County

0 500 1,000 2,000 Feet  
Scale: 1" = 1,000'



Prepared By: ZDP  
Prepared For: SG Interests, Ltd.

NE1/4 SE1/4, Section 23, T. 11 S, R. 90 W  
 Footage at Surface: 2,523' FSL, 11' FEL  
 Latitude: 39.085272°  
 Longitude: -107.405900°  
 Measurement Reference Point: Center of Proposed Pit

Section 14

Section 23

Section 26

GLO Brass Cap

S 88° 55' 53" E 5295.5'

GLO Brass Cap

S 1° 7' 25" W 5279.6'

S 1° 10' 10" W 5279.8'

To Nearest Building  
 N 47° 38' 12" E  
 5453.3'  
 To Nearest Public Road  
 N 48° 27' 58" E  
 5838.4'

To Nearest Water Well  
 N 63° 15' 10" E  
 5461.5'  
 Permit # 263115  
 Depth to Water: 145'

To Nearest Aboveground Utility  
 N 51° 20' 48" W  
 391.1'

Flowback Pit 2

11.3' FEL

To Nearest Railroad  
 S 11° 45' 2" W  
 57810.3'

To Nearest Property Line  
 S 0° 8' 43" W  
 2523.9'

Overhead Powerline

GLO Brass Cap  
 Witness Corner

S 88° 55' 48" E 5291.3'

GLO Brass Cap

0 500 1,000 2,000 Feet

#### Visible Improvements to Pit Center

Description	Bearing	Distance (Ft.)
Building	N 47° 38' 12" E	5,453
Public Road	N 48° 27' 58" E	5,838
Railroad	S 11° 45' 2" W	57,810
Aboveground Utility	N 59° 9' 52" W	391
Property Line	S 0° 8' 43" W	2,524
Well	N 63° 15' 10" E	5,462

#### Current Land Use:

NON-CROP LAND: Rangeland

NAD 83 Datum  
 SCALE: 1" = 1,000'  
 DATE: 11.11.2010



**SG Interests**  
 PO Box 26  
 Montrose, CO 81402  
 970-252-0696

#### Bull Mountain Unit

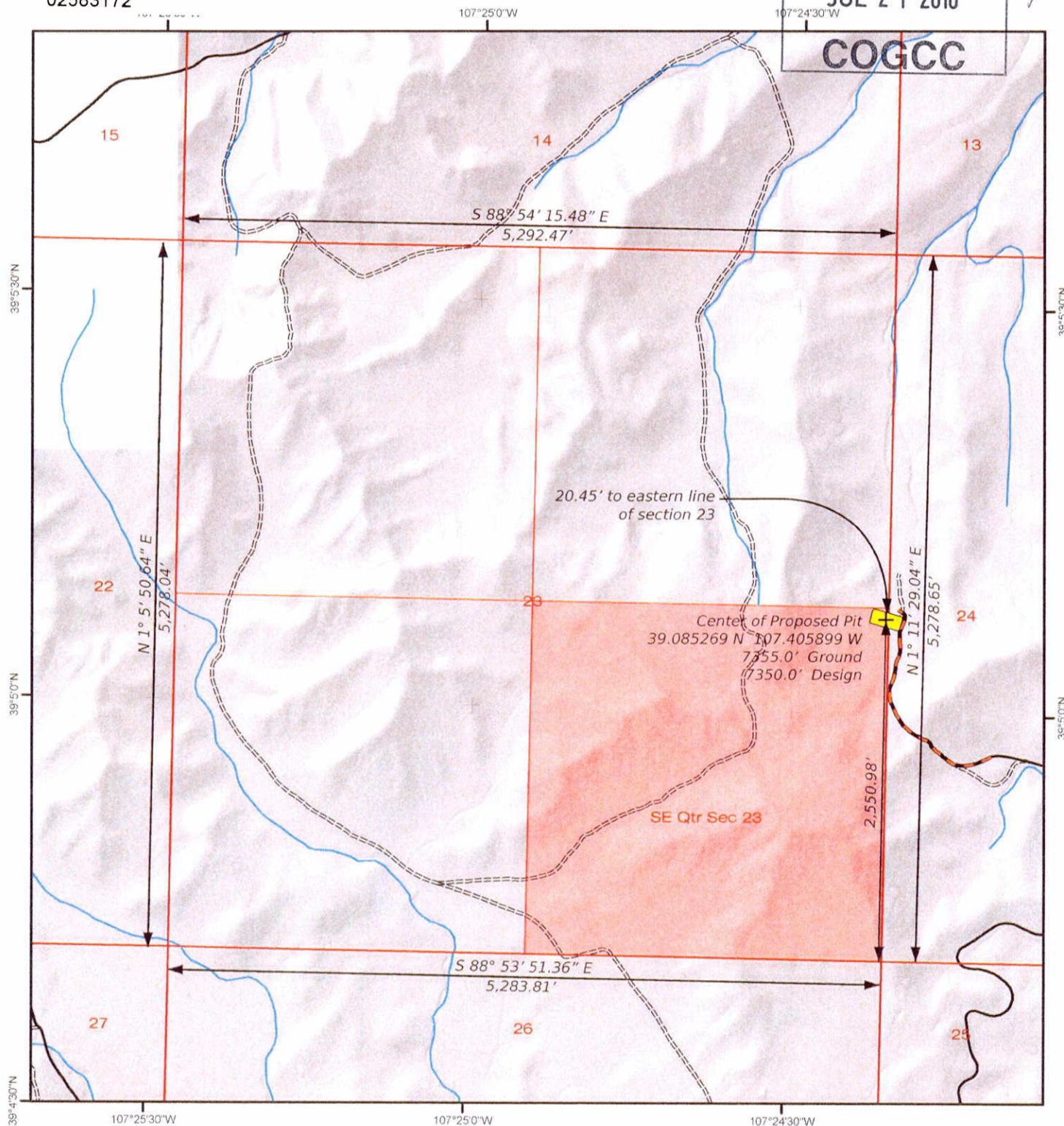
T. 11 S, R. 90 W, Sections 23 & 24

**McIntyre Flowback Pit 2  
 LOCATION**





02583172

RECEIVED  
Location Drawing  
JUL 21 2010

## LEGEND

- Proposed Pit
- Township Boundary
- Section Line
- Quarter-Section Line
- Proposed Access Road
- County Road
- Improved Road
- Unimproved Road
- Stream

## Note:

Existing ground elevation interpolated from LIDAR base data. LIDAR data acquired in November 2008 with 1-meter posting resulting in < 6 in. vertical RMSE (Root Mean Square Error). Elevations based on NAVD 88 vertical datum.

## Disclaimer:

This product is for informational purposes and may not have been prepared for, or be suitable for legal, engineering, or surveying purposes. Users of this information should review or consult the primary data and information sources to ascertain the usability of the information. The maps are distributed "AS-IS" without warranties of any kind, either expressed or implied, including but not limited to warranties of suitability to a particular purpose or use.

## McIntyre Flowback Pit #2

Location Map  
07.15.2010

CO 06 11S 90W SEC23  
Baseline: 40° 0' 7" N / Gunnison County

0 500 1,000 2,000  
Feet  
Scale: 1" = 1,000'



Prepared By: ZDP  
Prepared For: SG Interests, Ltd.