



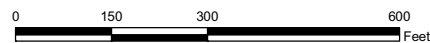




-  400' Setback from Disturbance
-  Proposed Disturbed Area
-  Wetland
-  Stream

NW1/4 NE1/4, Section 26, T. 11 S, R. 90 W

State Plane CO Central NAD 83  
SCALE: 1" = 300'  
DATE: May 2011

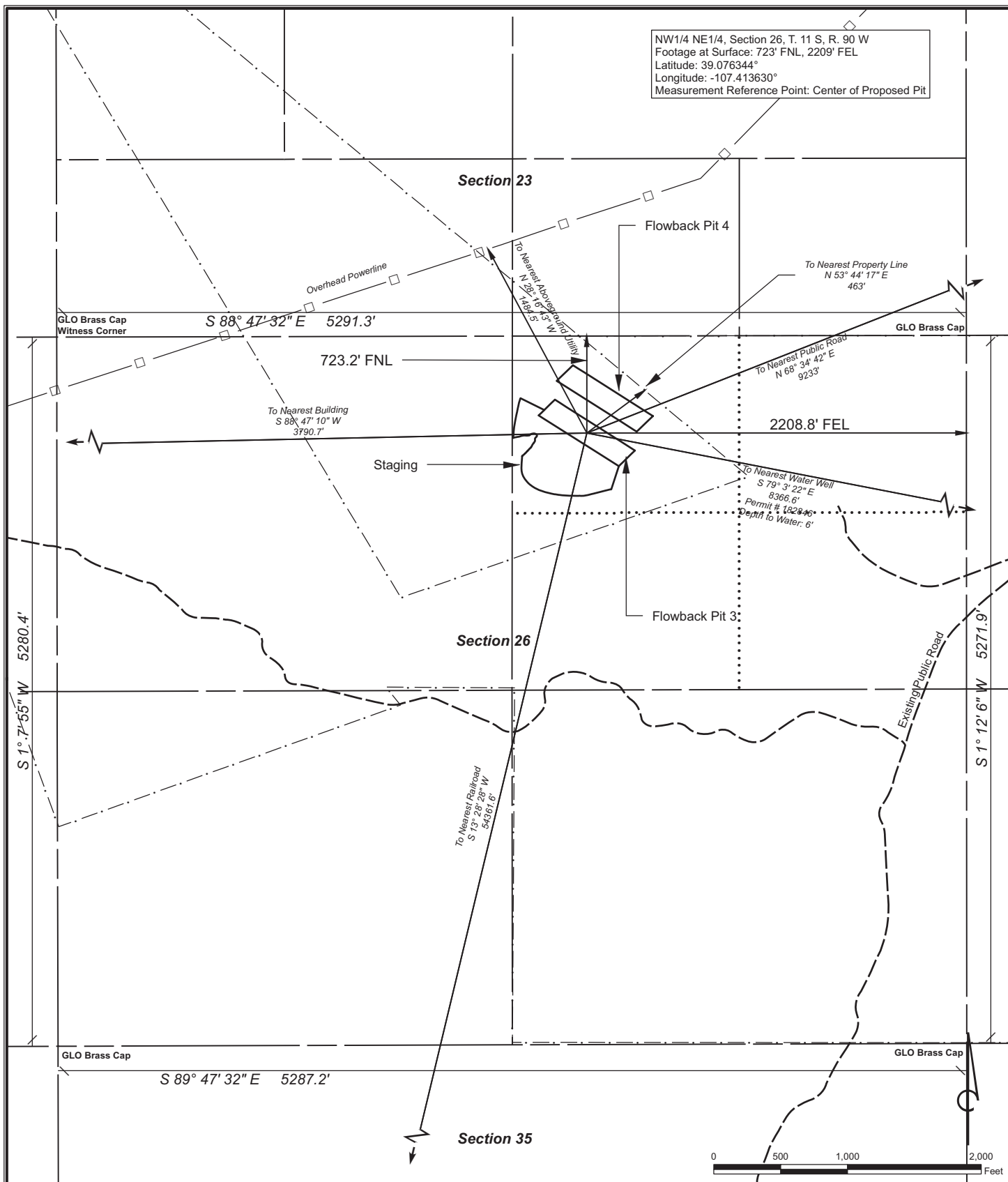



**SG Interests**  
PO Box 26  
Montrose, CO 81402  
970-252-0696

**Bull Mountain Unit**  
T. 11 S, R. 90 W, Section 26

**McIntyre Flowback Pits 3 & 4**  
400' Setback





Visible Improvements to Pit Center			Current Land Use: NON-CROP LAND: Rangeland	 <b>SG Interests</b> PO Box 26 Montrose, CO 81402 970-252-0696
Description	Bearing	Distance (Ft.)		
Building	S 88° 47' 10" W	3,791	NAD 83 Datum SCALE: 1" = 1,000' DATE: 11.11.2010	<b>Bull Mountain Unit</b> T. 11 S, R. 90 W, Section 26 <b>McIntyre Flowback Pit 3</b> <b>LOCATION</b>
Public Road	N 68° 34' 42" E	9,233		
Railroad	S 13° 28' 28" W	54,362		
Aboveground Utility	N 28° 16' 43" W	1,485		
Property Line	N 53° 44' 17" E	463		
Well	S 79° 3' 22" E	8,367		



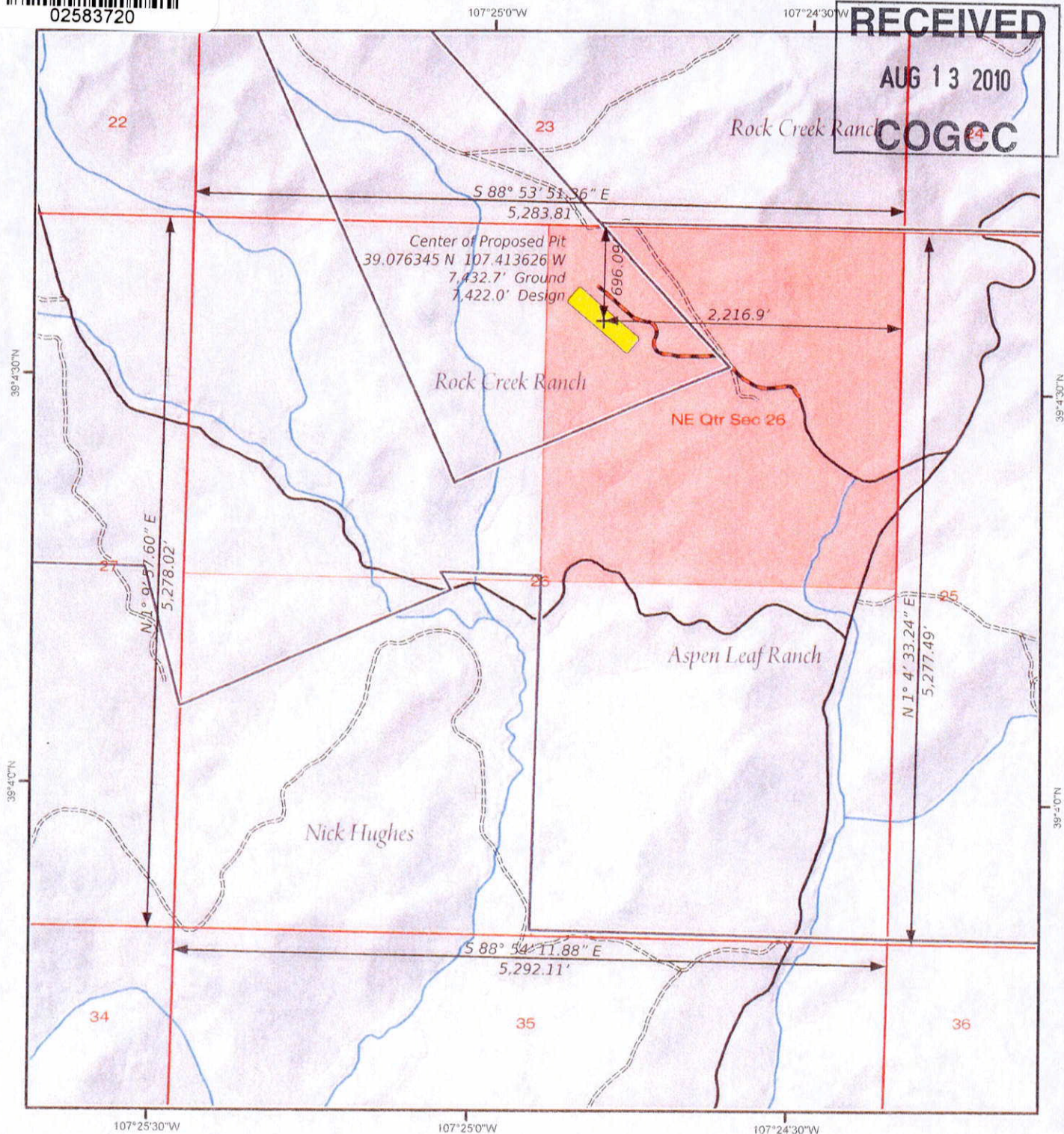
02583720

Location Drawing

RECEIVED

AUG 13 2010

COGCC



## LEGEND

- Proposed Pit
- Township Boundary
- Section Line
- Proposed Access Road
- County Road
- Improved Road
- Unimproved Road
- Stream

## Note:

Existing ground elevation interpolated from LIDAR base data. LIDAR data acquired in November 2008 with 1 meter posting resulting in ~ 6 in. vertical RMSE (Root Mean Square Error). Elevations based on NAVD 88 vertical datum.

## Disclaimer:

This product is for informational purposes and may not have been prepared for, or be suitable for legal, engineering, or surveying purposes. Users of this information should review or consult the primary data and information sources to ascertain the usability of the information. The maps are distributed "AS-IS" without warranties of any kind, either expressed or implied, including but not limited to warranties of suitability to a particular purpose or use.

## McIntyre Flowback Pit #3

Location Map  
07.30.2010

CO 06 11S 90W SFC26

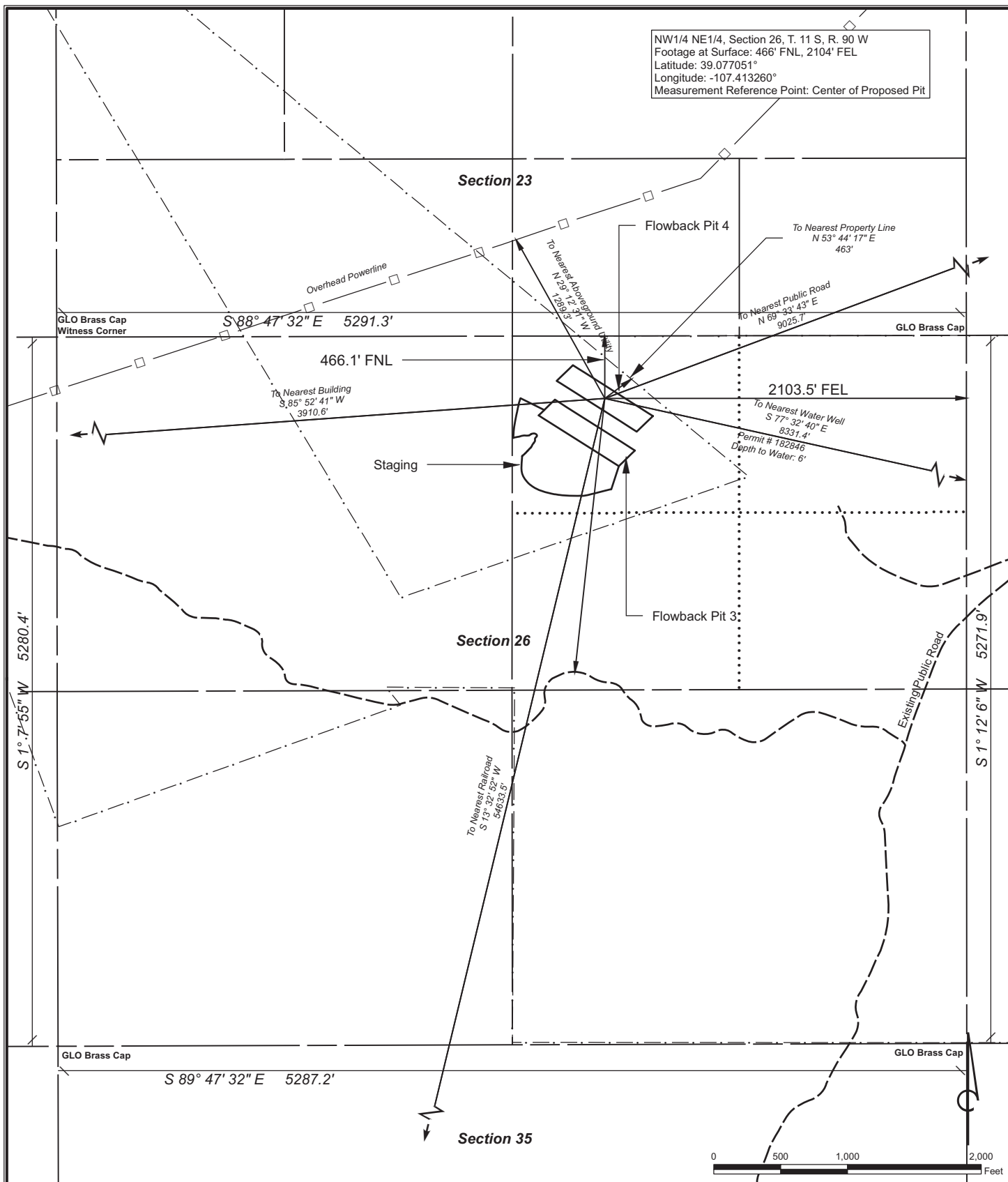
Baseline: 40° 0' 7" N / Gunnison County


0 500 1,000 2,000  
Feet  
Scale: 1" = 1,000'



Prepared By: ZDF  
Prepared For: SG Interests, Ltd.





Visible Improvements to Pit Center			Current Land Use: NON-CROP LAND: Rangeland	 <b>SG Interests</b> PO Box 26 Montrose, CO 81402 970-252-0696
Description	Bearing	Distance (Ft.)		
Building	S 85° 52' 41" W	3,911	NAD 83 Datum SCALE: 1" = 1,000' DATE: 11.11.2010	<b>Bull Mountain Unit</b> T. 11 S, R. 90 W, Section 26 <b>McIntyre Flowback Pit 4</b> <b>LOCATION</b>
Public Road	N 69° 33' 43" E	9,026		
Railroad	S 13° 35' 52" W	54,634		
Aboveground Utility	N 29° 12' 31" W	1,289		
Property Line	N 53° 44' 17" E	211		
Well	S 77° 32' 40" E	8,331		





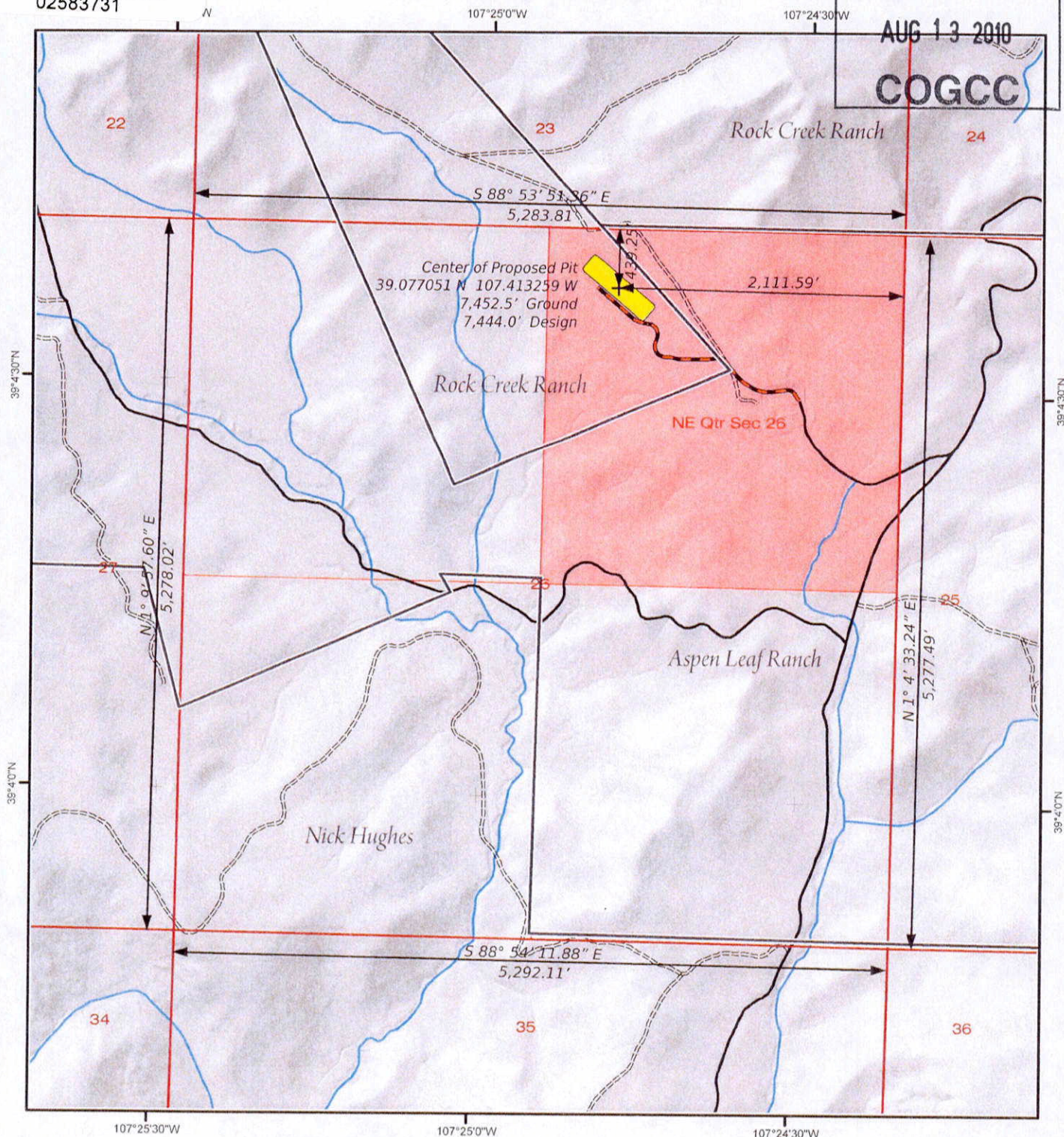
02583731

Location Drawing

RECEIVED

AUG 13 2010

COGCC



## LEGEND

- Proposed Pit
- Township Boundary
- Section Line
- Quarter-Section Line
- Proposed Access Road
- County Road
- Improved Road
- Unimproved Road
- Stream

## Note:

Existing ground elevation interpolated from LIDAR base data. LIDAR data acquired in November 2008 with 1-meter posting resulting in < 6 in. vertical RMSE (Root Mean Square Error). Elevations based on NAVD 88 vertical datum.

## Disclaimer:

This product is for informational purposes and may not have been prepared for, or be suitable for legal, engineering, or surveying purposes. Users of this information should review or consult the primary data and information sources to ascertain the usability of the information. The maps are distributed "AS-IS" without warranties of any kind, either expressed or implied, including but not limited to warranties of suitability to a particular purpose or use.

McIntyre Flowback Pit #4

Location Map  
07.30.2010CO 06 11S 90W SEC26  
Baseline: 40° 0' 7" N / Gunnison County

0 500 1,000 2,000  
Feet  
Scale: 1" = 1,000'

Prepared By: ZDP  
Prepared For: SG Interests, Ltd.