

LEGEND

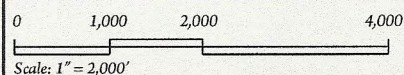
- Proposed Pit
- Existing Well
- Proposed Access Road
- County Road
- Improved Road
- Unimproved Road
- Township Boundary
- Section Boundary
- Stream

Note:
25-ft contours interpolated from USGS DEM (Digital Elevation Model).

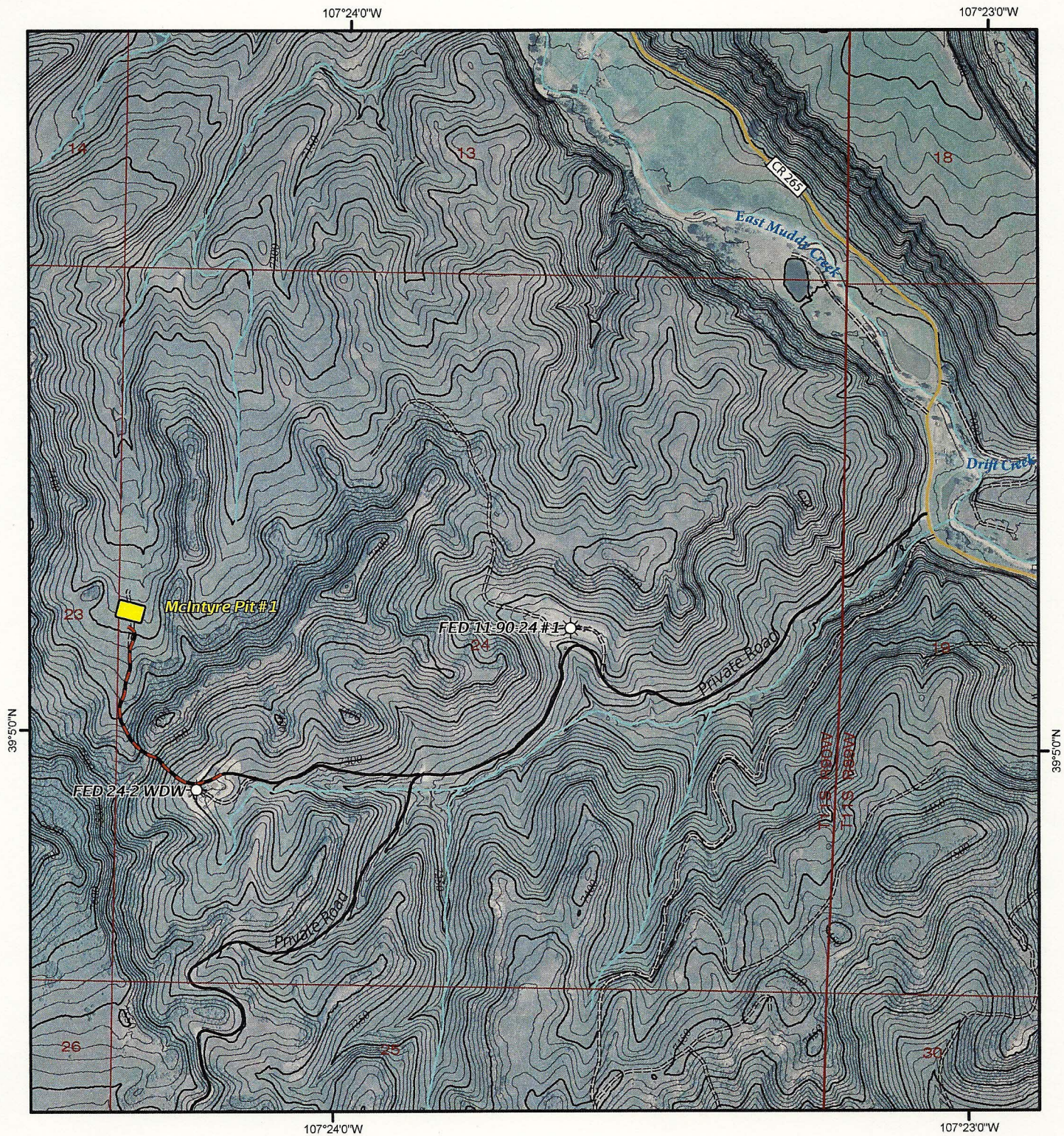
Disclaimer:
This product is for informational purposes and may not have been prepared for, or be suitable for legal, engineering, or surveying purposes. Users of this information should review or consult the primary data and information sources to ascertain the usability of the information. The maps are distributed "AS-IS" without warranties of any kind, either expressed or implied, including but not limited to warranties of suitability to a particular purpose or use.

McIntyre Flowback Pit #1

Topo Map
07.15.2010



Prepared By: ZDP
Prepared For: SG Interests, Ltd.
Contour Interval: 25 ft.



LEGEND

Proposed Pit

Existing Gas Well

Access Road

County Road

Improved Road

Unimproved Road

Township Boundary

Section Boundary

Stream

Note:

Disclaimer:

This product is for informational purposes and may not have been prepared for, or be suitable for legal, engineering, or surveying purposes. Users of this information should review or consult the primary data and information sources to ascertain the usability of the information. The maps are distributed "AS-IS" without warranties of any kind, either expressed or implied, including but not limited to warranties of suitability to a particular purpose or use.

McIntyre Flowback Pit #1

Access Road

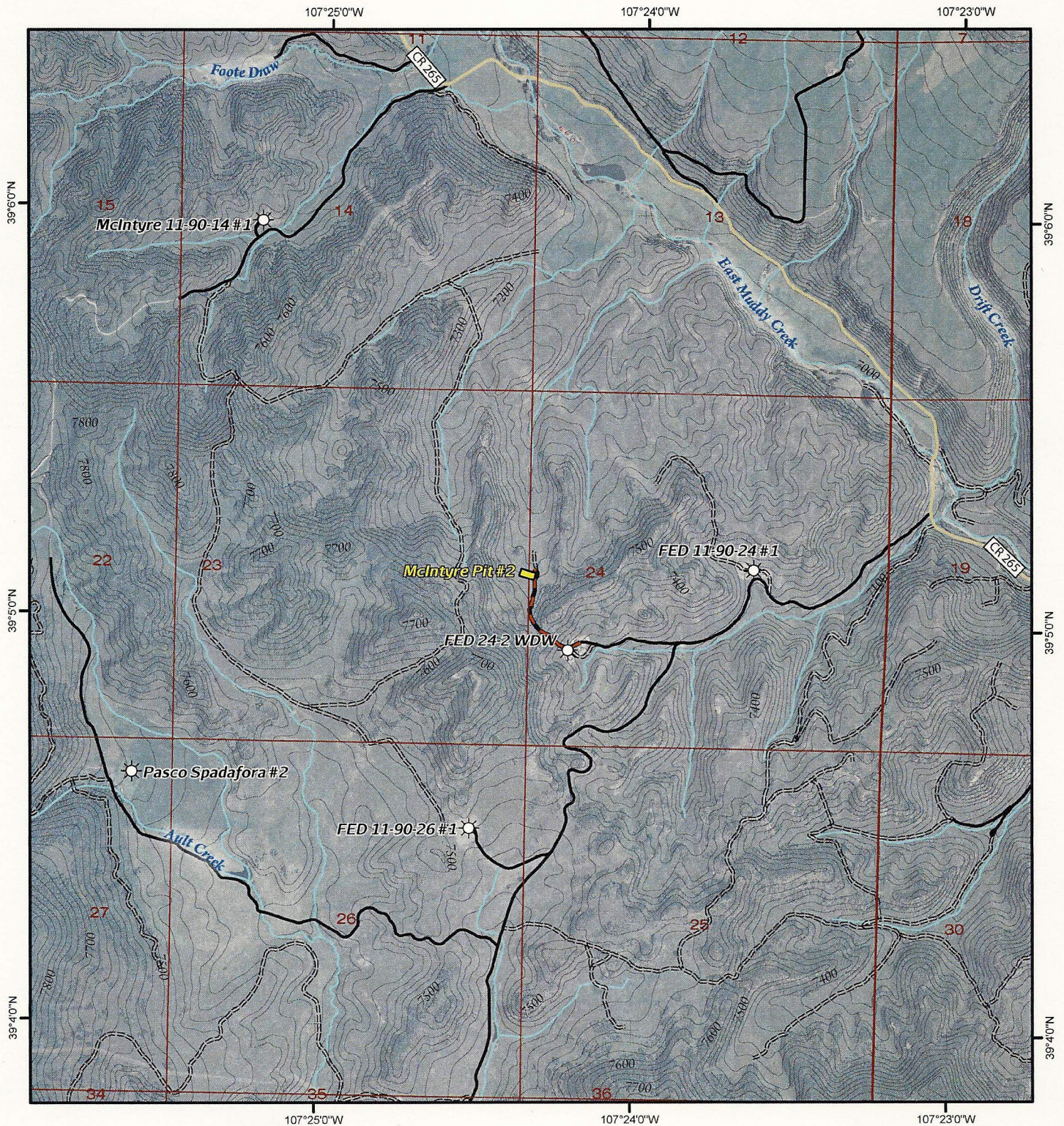
10.03.2010

0 500 1,000 2,000

Scale: 1" = 1,000'



Prepared By: ZDP
Prepared For: SG Interests, Ltd.
Contour Interval: 10 ft.



LEGEND

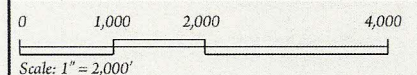
- | | |
|----------------------|-------------------|
| Proposed Pit | Township Boundary |
| Existing Well | Section Boundary |
| Proposed Access Road | Stream |
| County Road | |
| Improved Road | |
| Unimproved Road | |

Note:
25-ft contours interpolated from USGS DEM (Digital Elevation Model).

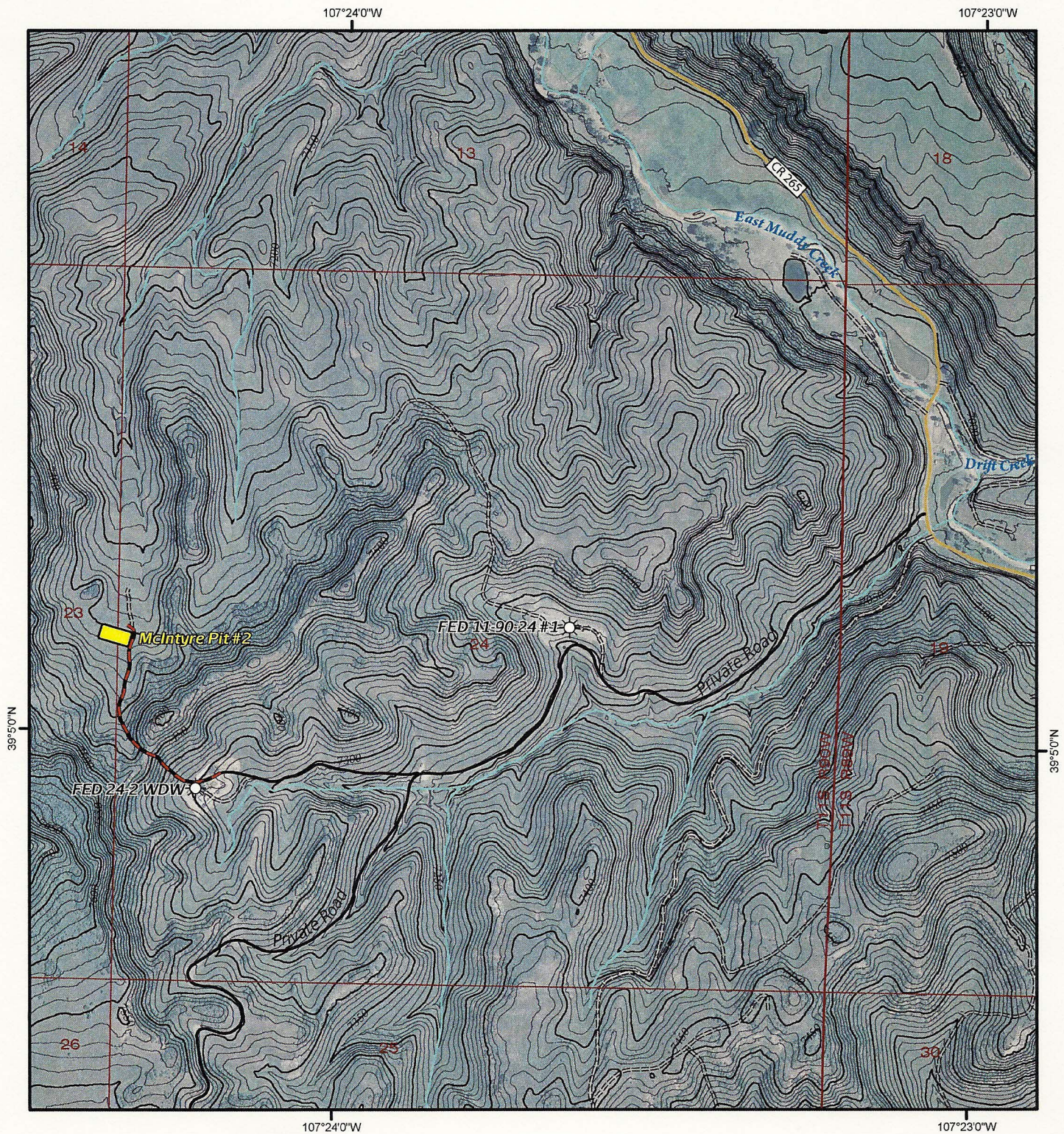
Disclaimer:
This product is for informational purposes and may not have been prepared for, or be suitable for legal, engineering, or surveying purposes. Users of this information should review or consult the primary data and information sources to ascertain the usability of the information. The maps are distributed "AS-IS" without warranties of any kind, either expressed or implied, including but not limited to warranties of suitability to a particular purpose or use.

McIntyre Flowback Pit #2

Topo Map
07.15.2010



Prepared By: ZDP
Prepared For: SG Interests, Ltd.
Contour Interval: 25 ft.



LEGEND

Proposed Pit

Existing Gas Well

Access Road

County Road

Improved Road

Unimproved Road

Township Boundary
 Section Boundary

Stream

Note:

Disclaimer:

This product is for informational purposes and may not have been prepared for, or be suitable for legal, engineering, or surveying purposes. Users of this information should review or consult the primary data and information sources to ascertain the usability of the information. The maps are distributed "AS-IS" without warranties of any kind, either expressed or implied, including but not limited to warranties of suitability to a particular purpose or use.

McIntyre Flowback Pit #2

Access Road
 10.03.2010

0 500 1,000 2,000

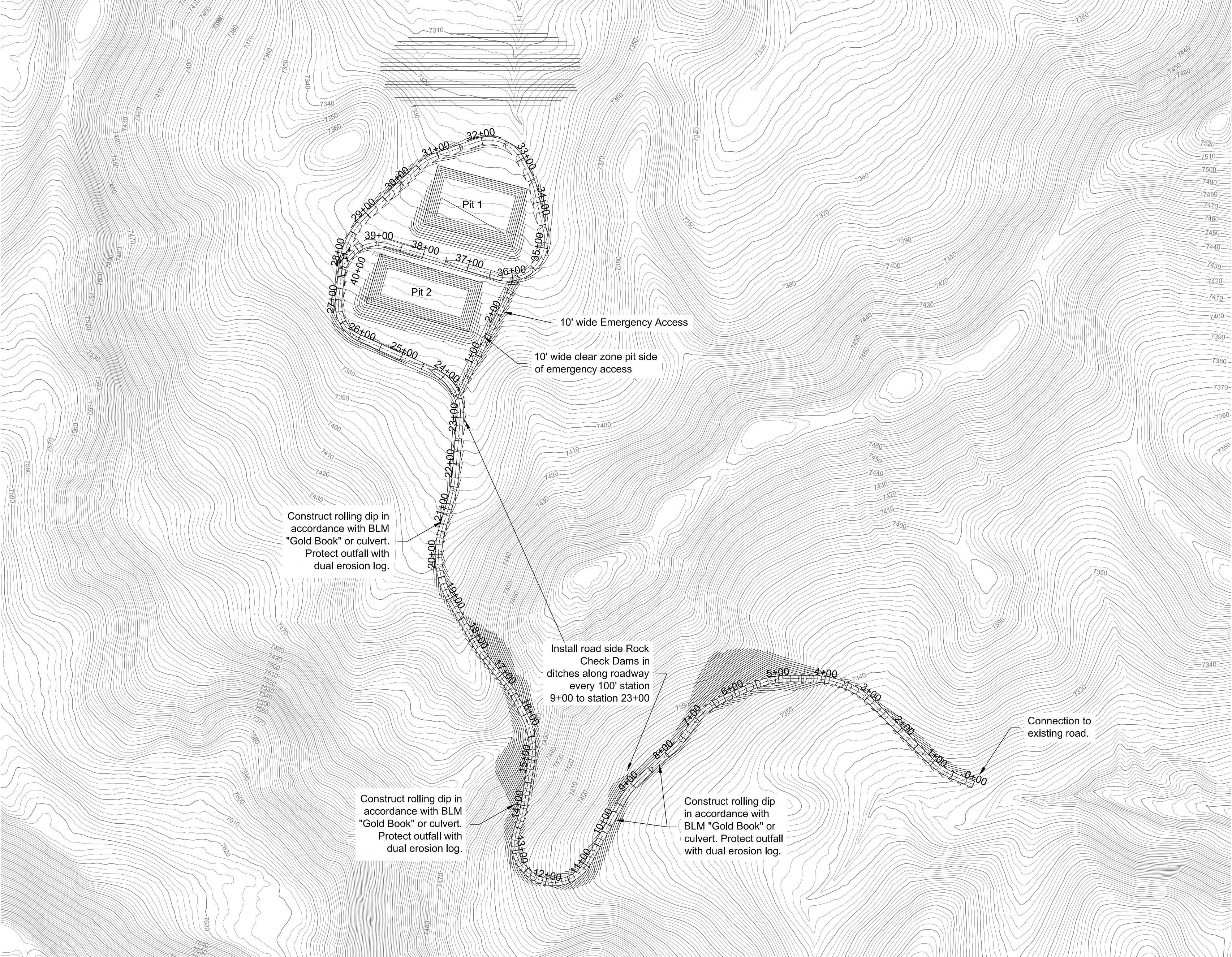
Scale: 1" = 1,000'



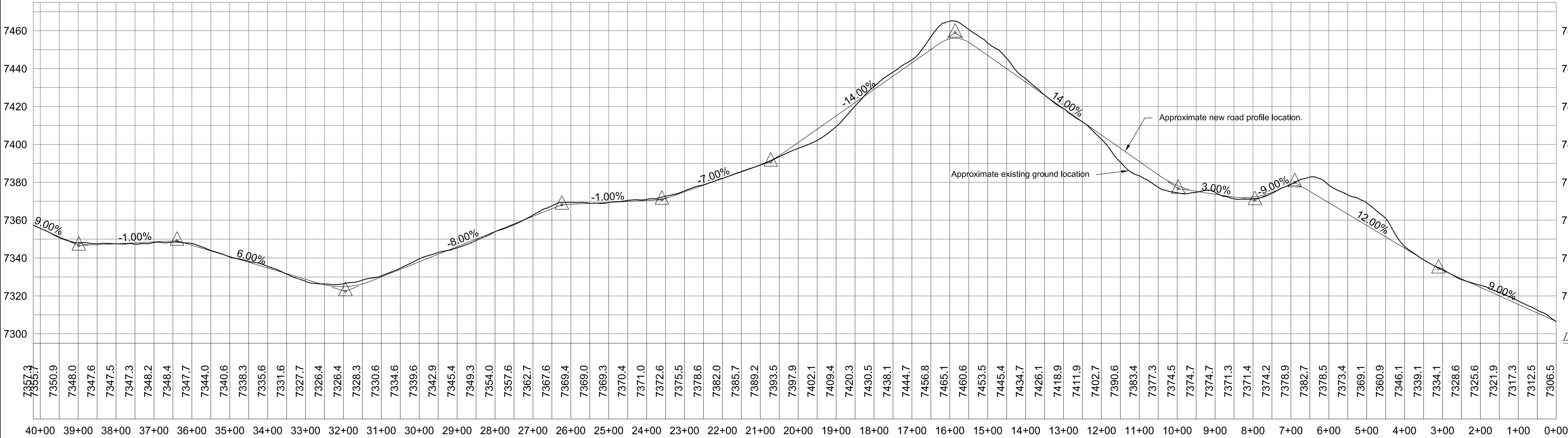
Prepared By: ZDP
 Prepared For: SG Interests, Ltd.
 Contour Interval: 10 ft.

SG Interests, I.
Pit Roads 1 & 2
Road Map with Profile.
Surface Data Provided by SG Interests.

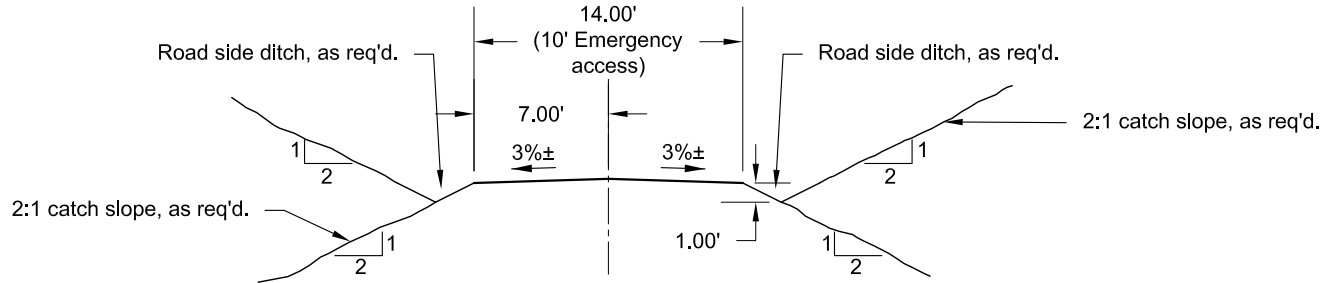
BELL CONSULTING, LLC
P.O. Box 8
Rifle, Colorado 81650
Voice: 970/625-9313 Fax: 970/625-9315



Map Plan.

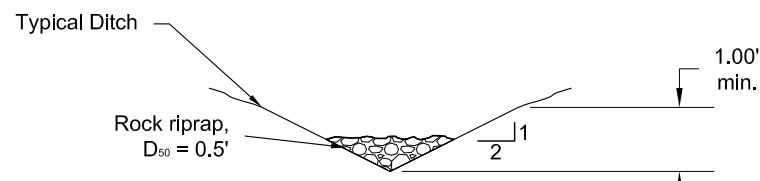


Road Profile.



Typical Road Section.

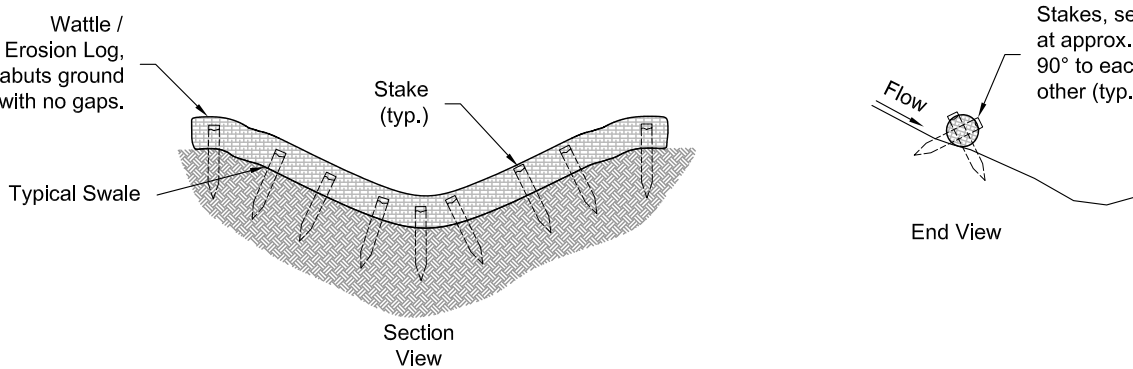
Do not scale.



Temporary Rock Check Dam Notes:
1. Maximum height of dam at center should not exceed 2' or one-half of the depth of the ditch.
2. Check dam should be wide enough to reach from bank to bank of the swale or ditch.

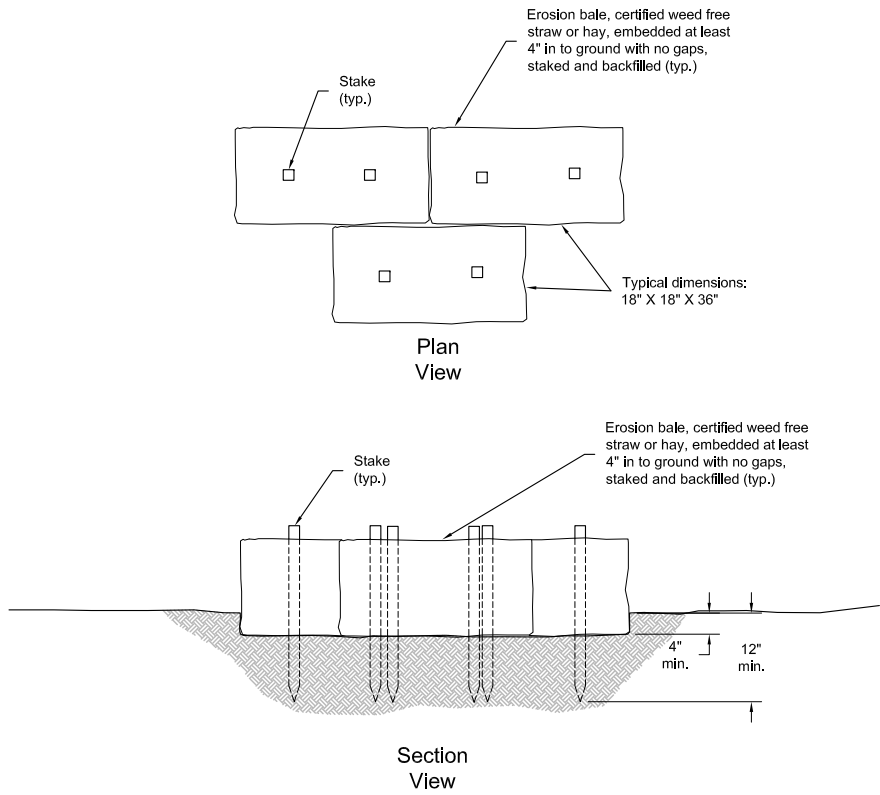
Rock Check Dam

Do not scale.



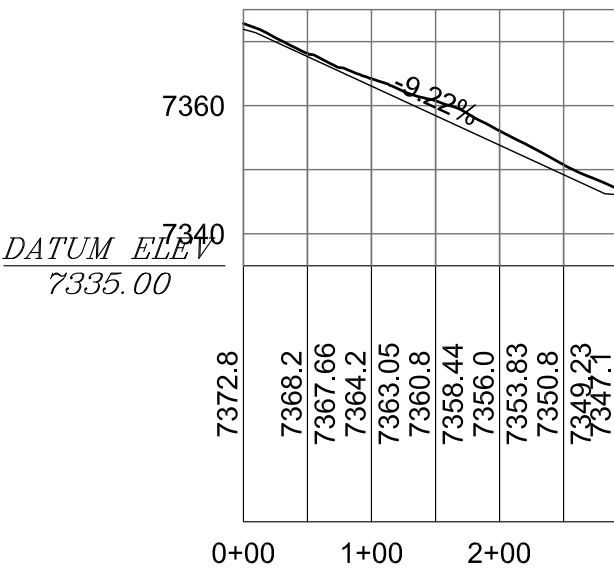
Wattle / Erosion Log.

Do not scale.



Straw / Hay Check Dam.

Do not scale.



Emergency Access Profile.