

LEGEND

- Proposed Pit
- Gas Well
- Shut-in Location
- Stream
- Wetland
- Water Body
- Proposed Access Road
- Unimproved Road

Note:

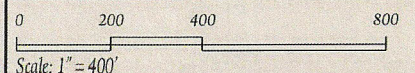
Disclaimer:

This product is for informational purposes and may not have been prepared for, or be suitable for legal, engineering, or surveying purposes. Users of this information should review or consult the primary data and information sources to ascertain the usability of the information. The maps are distributed "AS-IS" without warranties of any kind, either expressed or implied, including but not limited to warranties of suitability to a particular purpose or use.

McIntyre Flowback Pit #3

Hydrology Map

10.01.2010



Prepared By: ZDP
Prepared For: SG Interests, Ltd.
Contour Interval: 10 ft.



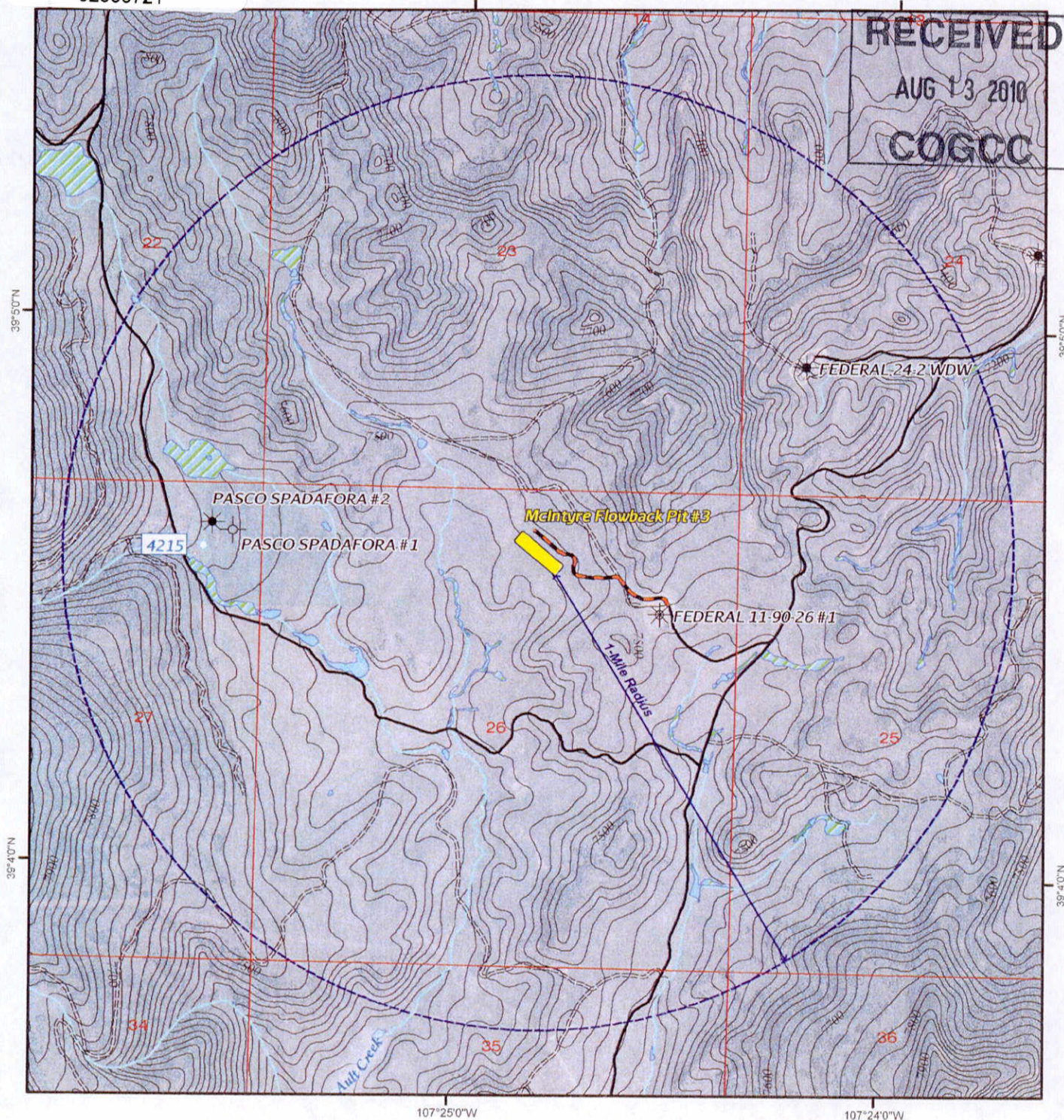
02583721

Hydrology

107°25'0"W

107°24'0"W

RECEIVED
AUG 13 2010
COGCC



LEGEND

- Proposed Pit
- Gas Well
- Producing Location
- Gas Well
- Shut-in Location
- Gas Well
- Shut-in Location
- Existing Water Well

- Stream
- Wetland
- Water Body
- Proposed Access Road
- County Road
- Improved Road
- Unimproved Road

Note:
25-ft contours interpolated from USGS DEM (Digital Elevation Model).

Disclaimer:
This product is for informational purposes and may not have been prepared for, or be suitable for legal, engineering, or surveying purposes. Users of this information should review or consult the primary data and information sources to ascertain the usability of the information. The maps are distributed "AS-IS" without warranties of any kind, either expressed or implied, including but not limited to warranties of suitability to a particular purpose or use.

McIntyre Flowback Pit #3

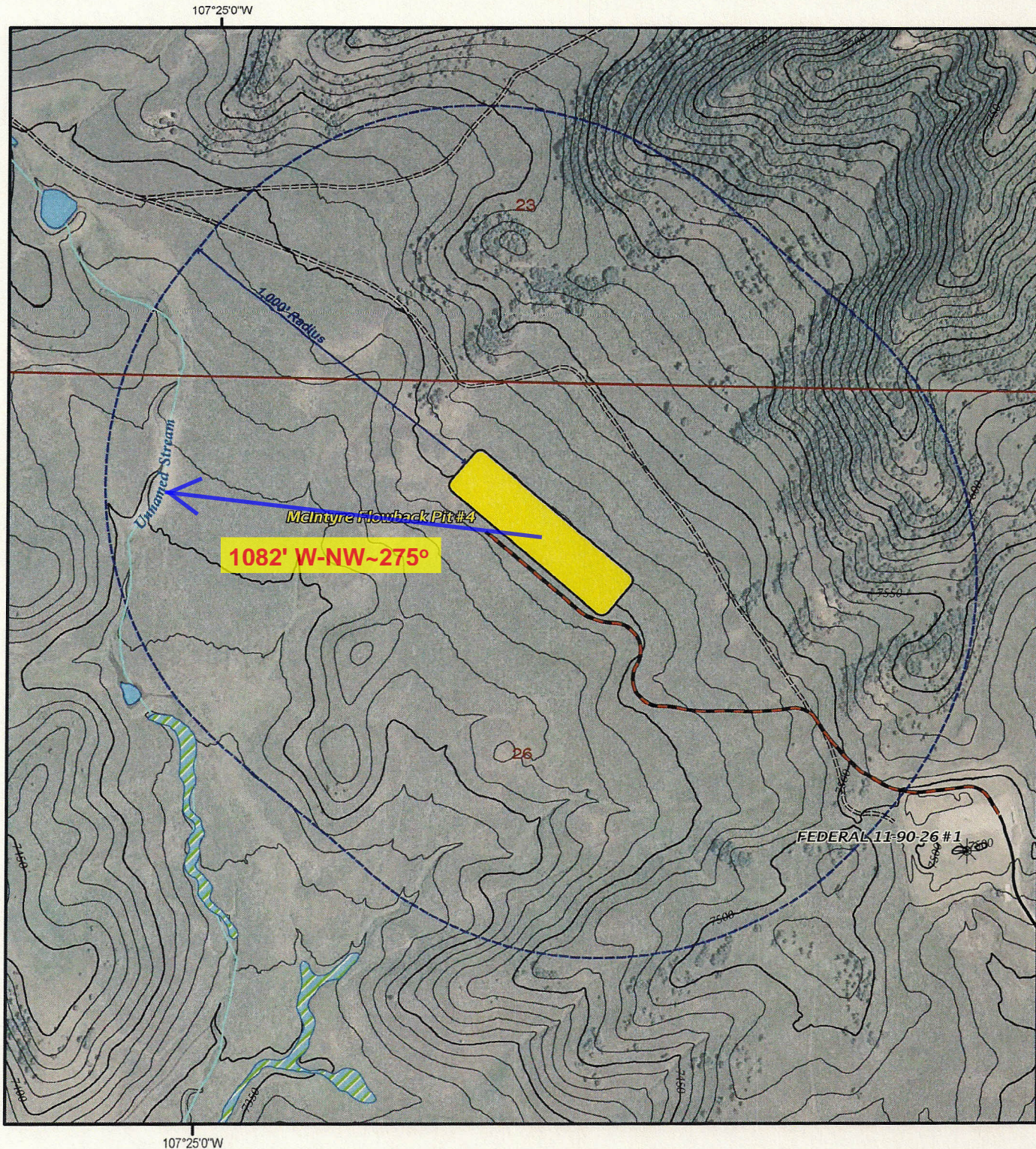
Hydrology Map

07.30.2010

0 750 1,500 3,000
Scale: 1" = 1,500'



Prepared By: ZDP
Prepared For: SG Interests, Ltd.
Contour Interval: 25 ft.



LEGEND

- Proposed Pit
- Gas Well Shut-in Location
- Stream
- Wetland
- Water Body
- Proposed Access Road
- Unimproved Road

Note:

Disclaimer:
This product is for informational purposes and may not have been prepared for, or be suitable for legal, engineering, or surveying purposes. Users of this information should review or consult the primary data and information sources to ascertain the usability of the information. The maps are distributed "AS-IS" without warranties of any kind, either expressed or implied, including but not limited to warranties of suitability to a particular purpose or use.

McIntyre Flowback Pit #4

Hydrology Map 10.01.2010

0 200 400 800
Scale: 1" = 400'



Prepared By: ZDP
Prepared For: SG Interests, Ltd.
Contour Interval: 10 ft.



02583732

107°25'0"W

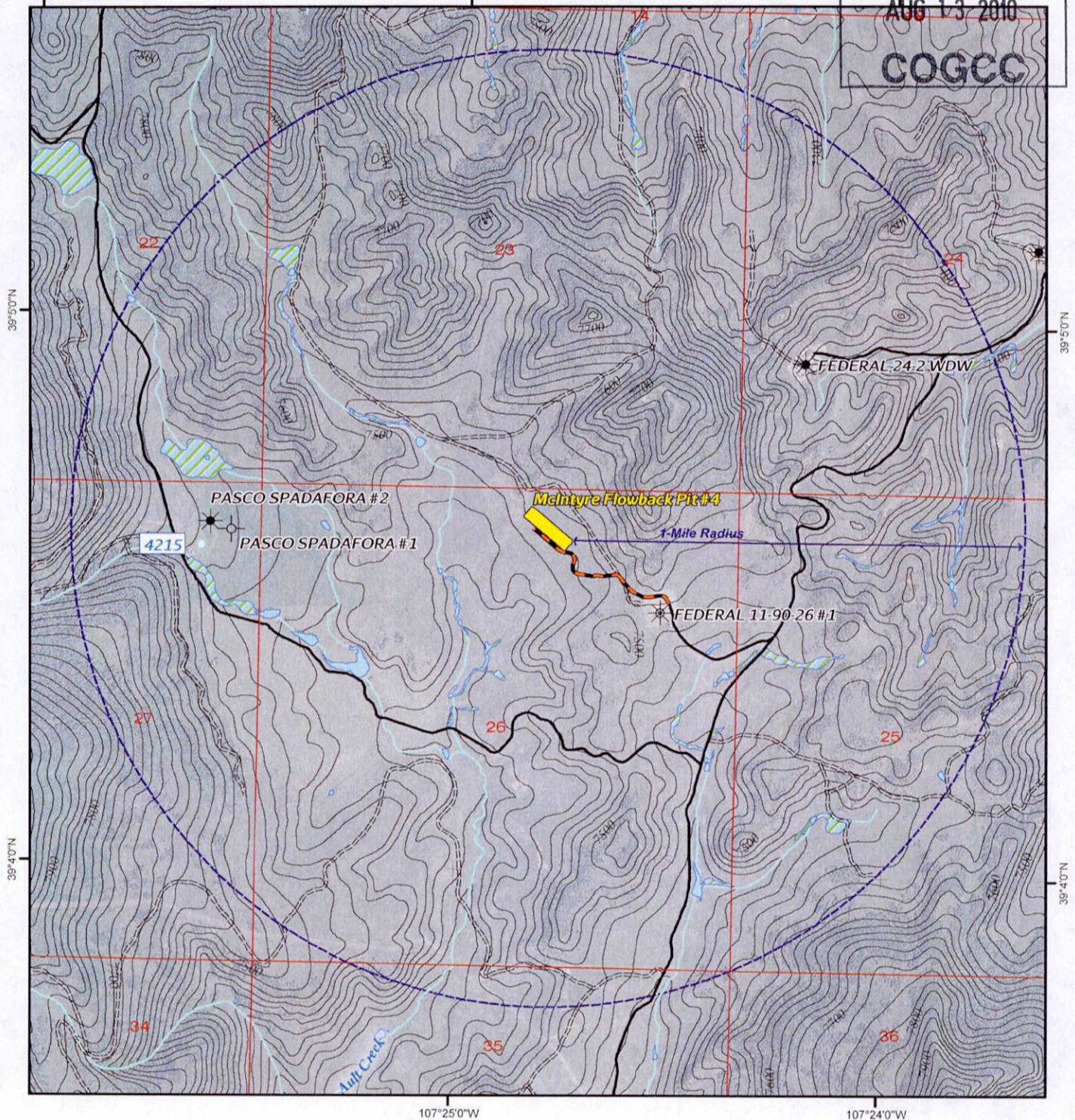
Hydrology

RECEIVED

107°24'0"W

AUG 13 2010

COGCC



LEGEND

- | | |
|--------------------------------|----------------------|
| Proposed Pit | Stream |
| Gas Well
Producing Location | Wetland |
| Gas Well
Shut-in Location | Water Body |
| Gas Well
Shut-in Location | Proposed Access Road |
| Existing Water Well | County Road |
| | Improved Road |
| | Unimproved Road |

Note:

25-ft contours interpolated from USGS DEM (Digital Elevation Model).

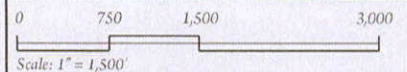
Disclaimer:

This product is for informational purposes and may not have been prepared for, or be suitable for legal, engineering, or surveying purposes. Users of this information should review or consult the primary data and information sources to ascertain the usability of the information. The maps are distributed "AS-IS" without warranties of any kind, either expressed or implied, including but not limited to warranties of suitability to a particular purpose or use.

McIntyre Flowback Pit #4

Hydrology Map

07.30.2010



Prepared By: ZDP
Prepared For: SG Interests, Ltd.
Contour Interval: 25 ft.