

# KERR MCGEE OIL & GAS ONSHORE LP

Location: COLORADO Slot: SLOT#01 GUERRERO 33-7 (519'FSL & 510'FWL)  
Field: WELD COUNTY (KERR MCGEE) Well: GUERRERO 33-7  
Facility: SEC.07-T2N-R65W Wellbore: GUERRERO 33-7 PWB



## Well Profile Data

Design Comment	MD (ft)	Inc (°)	Az (°)	TVD (ft)	Local N (ft)	Local E (ft)	DLS (°/100ft)	VS (ft)
Tie On	15.00	0.000	330.041	15.00	0.00	0.00	0.00	0.00
End of Tangent	200.00	0.000	330.041	200.00	0.00	0.00	0.00	0.00
End of Build	500.00	6.000	330.041	499.45	13.60	-7.84	2.00	15.69
End of Tangent	900.00	6.000	330.041	897.26	49.82	-28.72	0.00	57.50
Build (S)	1400.00	16.000	330.041	1387.45	132.37	-76.30	2.00	152.79
End of Tangent (S)	3790.00	16.000	330.041	3684.87	703.12	-405.28	0.00	811.56
Drop (S)	4590.00	0.000	330.041	4474.51	799.27	-460.70	2.00	922.54
End of Tangent	8113.49	0.000	330.041	7998.00	799.27	-460.70	0.00	922.54

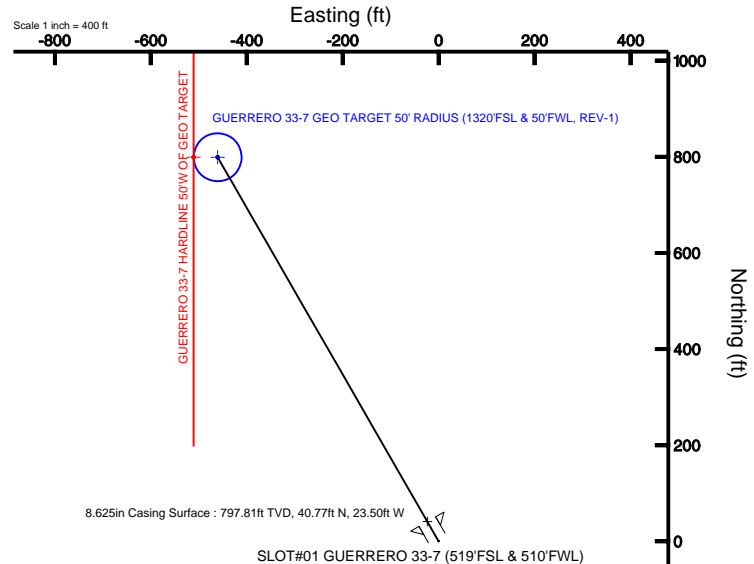
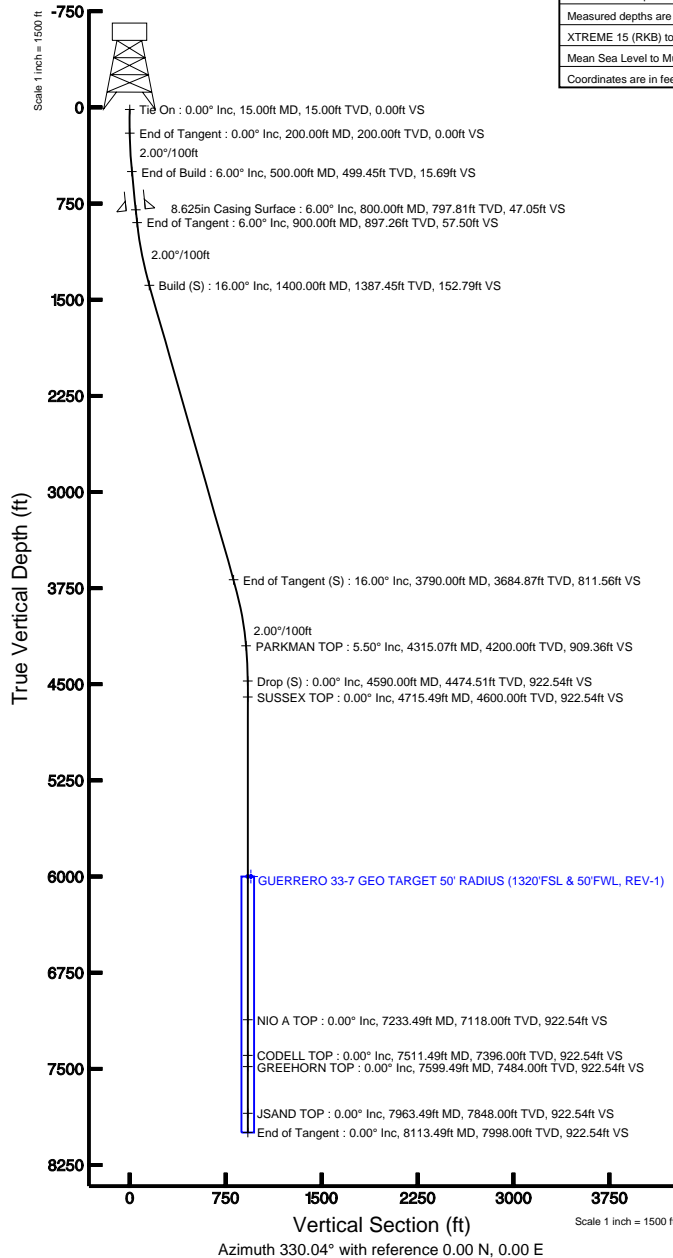
## Location Information

Facility Name				Grid East (USft)	Grid North (USft)	Latitude	Longitude
SEC.07-T2N-R65W				3219721.287	1297490.261	40°08'50.395"N	104°42'50.411"W
Slot		Local N (ft)	Local E (ft)	Grid East (USft)	Grid North (USft)	Latitude	Longitude
SLOT#01 GUERRERO 33-7 (519'FSL & 510'FWL)		0.00	0.00	3219721.287	1297490.261	40°08'50.395"N	104°42'50.411"W
XTREME 15 (RKB) to Mud line (Facility: SEC.07-T2N-R65W)				5000ft			
Mean Sea Level to Mud line (Facility: SEC.07-T2N-R65W)				0ft			
XTREME 15 (RKB) to Mean Sea Level				5000ft			

GUERRERO SL PT 2	6000.00	-508.94	-509.37	3219216.58	1296984.85	40°08'45.247"N	104°42'56.910"W
GUERRERO SL PT 3	6000.00	-508.93	2032.17	3221757.81	1296986.38	40°08'45.355"N	104°42'24.342"W
GUERRERO SL PT 4	6000.00	-4627.27	2105.82	3221785.92	1302135.82	40°09'36.121"N	104°42'23.288"W
GUERRERO 33-7 GEO TARGET 50' RADIUS (1320'FSL & 50'FWL, REV-1)	6000.00	799.27	-460.70	3219253.54	1298285.38	40°08'58.294"N	104°42'56.344"W
GUERRERO 33-7 HARDLINE 50'W OF GEO TARGET	6000.00	799.27	-510.70	3219233.55	1298284.94	40°08'58.294"N	104°42'56.987"W

## Plot reference wellpath is GUERRERO 33-7 (REV-A.0) PWP

True vertical depths are referenced to XTREME 15 (RKB)	Grid System: NAD83 / Lambert Colorado State Planes, Northern Zone (501), US feet
Measured depths are referenced to XTREME 15 (RKB)	North Reference: True north
XTREME 15 (RKB) to Mean Sea Level: 5000 feet	Scale: True distance
Mean Sea Level to Mud line (Facility: SEC.07-T2N-R65W): 0 feet	Depths are in feet
Coordinates are in feet referenced to Slot	Created by: cookdanm on 4/1/2011



BGGM (1945.0 to 2012.0) Dp: 66.87° Field: 53041.5 nT  
Magnetic North is 8.81 degrees East of True North (at 4/1/2011)

To correct azimuth from Magnetic to True add 8.81 degrees  
For example: if the Magnetic North Azimuth = 90 degs, then the Grid North Azimuth = 90 + 8.81 = 98.81



# Planned Wellpath Report

GUERRERO 33-7 (REV-A.0) PWP

Page 1 of 5



INTEQ

## REFERENCE WELLPATH IDENTIFICATION

Operator	KERR MCGEE OIL & GAS ONSHORE LP	Slot	SLOT#01 GUERRERO 33-7 (519'FSL & 510'FWL)
Area	COLORADO	Well	GUERRERO 33-7
Field	WELD COUNTY (KERR MCGEE)	Wellbore	GUERRERO 33-7 PWB
Facility	SEC.07-T2N-R65W		

## REPORT SETUP INFORMATION

Projection System	NAD83 / Lambert Colorado State Planes, Northern Zone (501), US feet	Software System	WellArchitect® 2.0
North Reference	True	User	Cookdanm
Scale	0.999958	Report Generated	4/1/2011 at 11:37:11 AM
Convergence at slot	0.51° East	Database/Source file	Denver Server/GUERRERO_33-7_PWB.xml

## WELLPATH LOCATION

	Local coordinates		Grid coordinates		Geographic coordinates	
	North[ft]	East[ft]	Easting[USft]	Northing[USft]	Latitude	Longitude
Slot Location	0.00	0.00	3219721.29	1297490.26	40°08'50.395"N	104°42'50.411"W
Facility Reference Pt			3219721.29	1297490.26	40°08'50.395"N	104°42'50.411"W
Field Reference Pt			3197771.84	1268891.29	40°04'09.600"N	104°47'36.000"W

## WELLPATH DATUM

Calculation method	Minimum curvature	XTREME 15 (RKB) to Facility Vertical Datum	5000.00ft
Horizontal Reference Pt	Slot	XTREME 15 (RKB) to Mean Sea Level	5000.00ft
Vertical Reference Pt	XTREME 15 (RKB)	Facility Vertical Datum to Mud Line (Facility)	0.00ft
MD Reference Pt	XTREME 15 (RKB)	Section Origin	N 0.00, E 0.00 ft
Field Vertical Reference	Mean Sea Level	Section Azimuth	330.04°



# Planned Wellpath Report

GUERRERO 33-7 (REV-A.0) PWP

Page 2 of 5



INTEQ

## REFERENCE WELLPATH IDENTIFICATION

Operator	KERR MCGEE OIL & GAS ONSHORE LP	Slot	SLOT#01 GUERRERO 33-7 (519'FSL & 510'FWL)
Area	COLORADO	Well	GUERRERO 33-7
Field	WELD COUNTY (KERR MCGEE)	Wellbore	GUERRERO 33-7 PWB
Facility	SEC.07-T2N-R65W		

## WELLPATH DATA (95 stations) † = interpolated/extrapolated station

MD [ft]	Inclination [°]	Azimuth [°]	TVD [ft]	Vert Sect [ft]	North [ft]	East [ft]	DLS [°/100ft]	Comments
0.00†	0.000	330.041	0.00	0.00	0.00	0.00	0.00	
15.00	0.000	330.041	15.00	0.00	0.00	0.00	0.00	Tie On
115.00†	0.000	330.041	115.00	0.00	0.00	0.00	0.00	
200.00	0.000	330.041	200.00	0.00	0.00	0.00	0.00	End of Tangent
215.00†	0.300	330.041	215.00	0.04	0.03	-0.02	2.00	
315.00†	2.300	330.041	314.97	2.31	2.00	-1.15	2.00	
415.00†	4.300	330.041	414.80	8.06	6.99	-4.03	2.00	
500.00	6.000	330.041	499.45	15.69	13.60	-7.84	2.00	End of Build
515.00†	6.000	330.041	514.37	17.26	14.96	-8.62	0.00	
615.00†	6.000	330.041	613.82	27.71	24.01	-13.84	0.00	
715.00†	6.000	330.041	713.27	38.17	33.07	-19.06	0.00	
815.00†	6.000	330.041	812.73	48.62	42.12	-24.28	0.00	
900.00	6.000	330.041	897.26	57.50	49.82	-28.72	0.00	End of Tangent
915.00†	6.300	330.041	912.17	59.11	51.21	-29.52	2.00	
1015.00†	8.300	330.041	1011.36	71.82	62.22	-35.86	2.00	
1115.00†	10.300	330.041	1110.04	87.98	76.22	-43.93	2.00	
1215.00†	12.300	330.041	1208.10	107.57	93.20	-53.72	2.00	
1315.00†	14.300	330.041	1305.41	130.57	113.13	-65.21	2.00	
1400.00	16.000	330.041	1387.45	152.79	132.37	-76.30	2.00	Build (S)
1415.00†	16.000	330.041	1401.87	156.92	135.96	-78.36	0.00	
1515.00†	16.000	330.041	1498.00	184.49	159.84	-92.13	0.00	
1615.00†	16.000	330.041	1594.12	212.05	183.72	-105.89	0.00	
1715.00†	16.000	330.041	1690.25	239.61	207.60	-119.66	0.00	
1815.00†	16.000	330.041	1786.38	267.18	231.48	-133.42	0.00	
1915.00†	16.000	330.041	1882.50	294.74	255.36	-147.19	0.00	
2015.00†	16.000	330.041	1978.63	322.31	279.24	-160.95	0.00	
2115.00†	16.000	330.041	2074.75	349.87	303.12	-174.72	0.00	
2215.00†	16.000	330.041	2170.88	377.43	327.00	-188.48	0.00	
2315.00†	16.000	330.041	2267.01	405.00	350.88	-202.25	0.00	
2415.00†	16.000	330.041	2363.13	432.56	374.76	-216.01	0.00	
2515.00†	16.000	330.041	2459.26	460.12	398.64	-229.78	0.00	
2615.00†	16.000	330.041	2555.38	487.69	422.52	-243.54	0.00	
2715.00†	16.000	330.041	2651.51	515.25	446.40	-257.31	0.00	
2815.00†	16.000	330.041	2747.64	542.82	470.28	-271.07	0.00	
2915.00†	16.000	330.041	2843.76	570.38	494.17	-284.84	0.00	
3015.00†	16.000	330.041	2939.89	597.94	518.05	-298.60	0.00	
3115.00†	16.000	330.041	3036.02	625.51	541.93	-312.37	0.00	
3215.00†	16.000	330.041	3132.14	653.07	565.81	-326.13	0.00	
3315.00†	16.000	330.041	3228.27	680.63	589.69	-339.90	0.00	
3415.00†	16.000	330.041	3324.39	708.20	613.57	-353.66	0.00	
3515.00†	16.000	330.041	3420.52	735.76	637.45	-367.43	0.00	
3615.00†	16.000	330.041	3516.65	763.33	661.33	-381.19	0.00	
3715.00†	16.000	330.041	3612.77	790.89	685.21	-394.96	0.00	
3790.00	16.000	330.041	3684.87	811.56	703.12	-405.28	0.00	End of Tangent (S)
3815.00†	15.500	330.041	3708.93	818.35	709.00	-408.67	2.00	



# Planned Wellpath Report

GUERRERO 33-7 (REV-A.0) PWP

Page 3 of 5



INTEQ

## REFERENCE WELLPATH IDENTIFICATION

Operator	KERR MCGEE OIL & GAS ONSHORE LP	Slot	SLOT#01 GUERRERO 33-7 (519'FSL & 510'FWL)
Area	COLORADO	Well	GUERRERO 33-7
Field	WELD COUNTY (KERR MCGEE)	Wellbore	GUERRERO 33-7 PWB
Facility	SEC.07-T2N-R65W		

## WELLPATH DATA (95 stations) † = interpolated/extrapolated station

MD [ft]	Inclination [°]	Azimuth [°]	TVD [ft]	Vert Sect [ft]	North [ft]	East [ft]	DLS [°/100ft]	Comments
3915.00†	13.500	330.041	3805.74	843.38	730.69	-421.17	2.00	
4015.00†	11.500	330.041	3903.36	865.03	749.44	-431.98	2.00	
4115.00†	9.500	330.041	4001.68	883.25	765.23	-441.08	2.00	
4215.00†	7.500	330.041	4100.58	898.03	778.04	-448.46	2.00	
4315.00†	5.500	330.041	4199.93	909.35	787.84	-454.11	2.00	
4315.07†	5.499	330.041	4200.00	909.36	787.85	-454.12	2.00	PARKMAN TOP
4415.00†	3.500	330.041	4299.62	917.20	794.64	-458.03	2.00	
4515.00†	1.500	330.041	4399.52	921.56	798.42	-460.21	2.00	
4590.00	0.000	330.041	4474.51 <sup>†</sup>	922.54	799.27	-460.70	2.00	Drop (S)
4615.00†	0.000	330.041	4499.51	922.54	799.27	-460.70	0.00	
4715.00†	0.000	330.041	4599.51	922.54	799.27	-460.70	0.00	
4715.49†	0.000	330.041	4600.00	922.54	799.27	-460.70	0.00	SUSSEX TOP
4815.00†	0.000	330.041	4699.51	922.54	799.27	-460.70	0.00	
4915.00†	0.000	330.041	4799.51	922.54	799.27	-460.70	0.00	
5015.00†	0.000	330.041	4899.51	922.54	799.27	-460.70	0.00	
5115.00†	0.000	330.041	4999.51	922.54	799.27	-460.70	0.00	
5215.00†	0.000	330.041	5099.51	922.54	799.27	-460.70	0.00	
5315.00†	0.000	330.041	5199.51	922.54	799.27	-460.70	0.00	
5415.00†	0.000	330.041	5299.51	922.54	799.27	-460.70	0.00	
5515.00†	0.000	330.041	5399.51	922.54	799.27	-460.70	0.00	
5615.00†	0.000	330.041	5499.51	922.54	799.27	-460.70	0.00	
5715.00†	0.000	330.041	5599.51	922.54	799.27	-460.70	0.00	
5815.00†	0.000	330.041	5699.51	922.54	799.27	-460.70	0.00	
5915.00†	0.000	330.041	5799.51	922.54	799.27	-460.70	0.00	
6015.00†	0.000	330.041	5899.51	922.54	799.27	-460.70	0.00	
6115.00†	0.000	330.041	5999.51	922.54	799.27	-460.70	0.00	
6215.00†	0.000	330.041	6099.51	922.54	799.27	-460.70	0.00	
6315.00†	0.000	330.041	6199.51	922.54	799.27	-460.70	0.00	
6415.00†	0.000	330.041	6299.51	922.54	799.27	-460.70	0.00	
6515.00†	0.000	330.041	6399.51	922.54	799.27	-460.70	0.00	
6615.00†	0.000	330.041	6499.51	922.54	799.27	-460.70	0.00	
6715.00†	0.000	330.041	6599.51	922.54	799.27	-460.70	0.00	
6815.00†	0.000	330.041	6699.51	922.54	799.27	-460.70	0.00	
6915.00†	0.000	330.041	6799.51	922.54	799.27	-460.70	0.00	
7015.00†	0.000	330.041	6899.51	922.54	799.27	-460.70	0.00	
7115.00†	0.000	330.041	6999.51	922.54	799.27	-460.70	0.00	
7215.00†	0.000	330.041	7099.51	922.54	799.27	-460.70	0.00	
7233.49†	0.000	330.041	7118.00	922.54	799.27	-460.70	0.00	NIO A TOP
7315.00†	0.000	330.041	7199.51	922.54	799.27	-460.70	0.00	
7415.00†	0.000	330.041	7299.51	922.54	799.27	-460.70	0.00	
7511.49†	0.000	330.041	7396.00	922.54	799.27	-460.70	0.00	CODELL TOP
7515.00†	0.000	330.041	7399.51	922.54	799.27	-460.70	0.00	
7599.49†	0.000	330.041	7484.00	922.54	799.27	-460.70	0.00	GREEHORN TOP
7615.00†	0.000	330.041	7499.51	922.54	799.27	-460.70	0.00	
7715.00†	0.000	330.041	7599.51	922.54	799.27	-460.70	0.00	



# Planned Wellpath Report

GUERRERO 33-7 (REV-A.0) PWP

Page 4 of 5



INTEQ

## REFERENCE WELLPATH IDENTIFICATION

Operator	KERR MCGEE OIL & GAS ONSHORE LP	Slot	SLOT#01 GUERRERO 33-7 (519'FSL & 510'FWL)
Area	COLORADO	Well	GUERRERO 33-7
Field	WELD COUNTY (KERR MCGEE)	Wellbore	GUERRERO 33-7 PWB
Facility	SEC.07-T2N-R65W		

## WELLPATH DATA (95 stations) † = interpolated/extrapolated station

MD [ft]	Inclination [°]	Azimuth [°]	TVD [ft]	Vert Sect [ft]	North [ft]	East [ft]	DLS [°/100ft]	Comments
7815.00†	0.000	330.041	7699.51	922.54	799.27	-460.70	0.00	
7915.00†	0.000	330.041	7799.51	922.54	799.27	-460.70	0.00	
7963.49†	0.000	330.041	7848.00	922.54	799.27	-460.70	0.00	JSAND TOP
8015.00†	0.000	330.041	7899.51	922.54	799.27	-460.70	0.00	
8113.49	0.000	330.041	7998.00	922.54	799.27	-460.70	0.00	End of Tangent

## HOLE & CASING SECTIONS

Ref Wellbore: GUERRERO 33-7 PWB Ref Wellpath: GUERRERO 33-7 (REV-A.0) PWP

String/Diameter	Start MD [ft]	End MD [ft]	Interval [ft]	Start TVD [ft]	End TVD [ft]	Start N/S [ft]	Start E/W [ft]	End N/S [ft]	End E/W [ft]
12.25in Open Hole	15.00	800.00	785.00	15.00	797.81	0.00	0.00	40.77	-23.50
8.625in Casing Surface	15.00	800.00	785.00	15.00	797.81	0.00	0.00	40.77	-23.50
7.875in Open Hole	800.00	8113.49	7313.49	797.81	7998.00	40.77	-23.50	799.27	-460.70

## TARGETS

Name	MD [ft]	TVD [ft]	North [ft]	East [ft]	Grid East [srv ft]	Grid North [srv ft]	Latitude	Longitude	Shape
GUERRERO SL PT 1		6000.00	4678.67	-514.85	3219165.01	1302163.98	40°09'36.630"N	104°42'57.042"W	point
GUERRERO SL PT 2		6000.00	-520.94	-509.37	3219216.58	1296964.85	40°08'45.247"N	104°42'56.970"W	point
GUERRERO SL PT 3		6000.00	-509.93	2032.17	3221757.81	1296998.38	40°08'45.355"N	104°42'24.242"W	point
GUERRERO SL PT 4		6000.00	4627.27	2105.82	3221785.92	1302135.82	40°09'36.121"N	104°42'23.288"W	point
1) GUERRERO 33-7 GEO TARGET 50' RADIUS (1320'FSL & 50'FWL, REV-1)		6000.00	799.27	-460.70	3219253.54	1298285.38	40°08'58.294"N	104°42'56.344"W	circle
GUERRERO 33-7 HARDLINE 50'W OF GEO TARGET		6000.00	799.27	-510.70	3219203.55	1298284.94	40°08'58.294"N	104°42'56.987"W	point

## SURVEY PROGRAM Ref Wellbore: GUERRERO 33-7 PWB Ref Wellpath: GUERRERO 33-7 (REV-A.0) PWP

Start MD [ft]	End MD [ft]	Positional Uncertainty Model	Log Name/Comment	Wellbore
15.00	8113.49	NaviTrak (Standard)		GUERRERO 33-7 PWB



# Planned Wellpath Report

GUERRERO 33-7 (REV-A.0) PWP

Page 5 of 5



INTEQ

## REFERENCE WELLPATH IDENTIFICATION

Operator	KERR MCGEE OIL & GAS ONSHORE LP	Slot	SLOT#01 GUERRERO 33-7 (519'FSL & 510'FWL)
Area	COLORADO	Well	GUERRERO 33-7
Field	WELD COUNTY (KERR MCGEE)	Wellbore	GUERRERO 33-7 PWB
Facility	SEC.07-T2N-R65W		

## WELLPATH COMMENTS

MD [ft]	Inclination [°]	Azimuth [°]	TVD [ft]	Comment
4315.07	5.499	330.041	4200.00	PARKMAN TOP
4715.49	0.000	330.041	4600.00	SUSSEX TOP
7233.49	0.000	330.041	7118.00	NIO A TOP
7511.49	0.000	330.041	7396.00	CODELL TOP
7599.49	0.000	330.041	7484.00	GREEHORN TOP
7963.49	0.000	330.041	7848.00	JSAND TOP