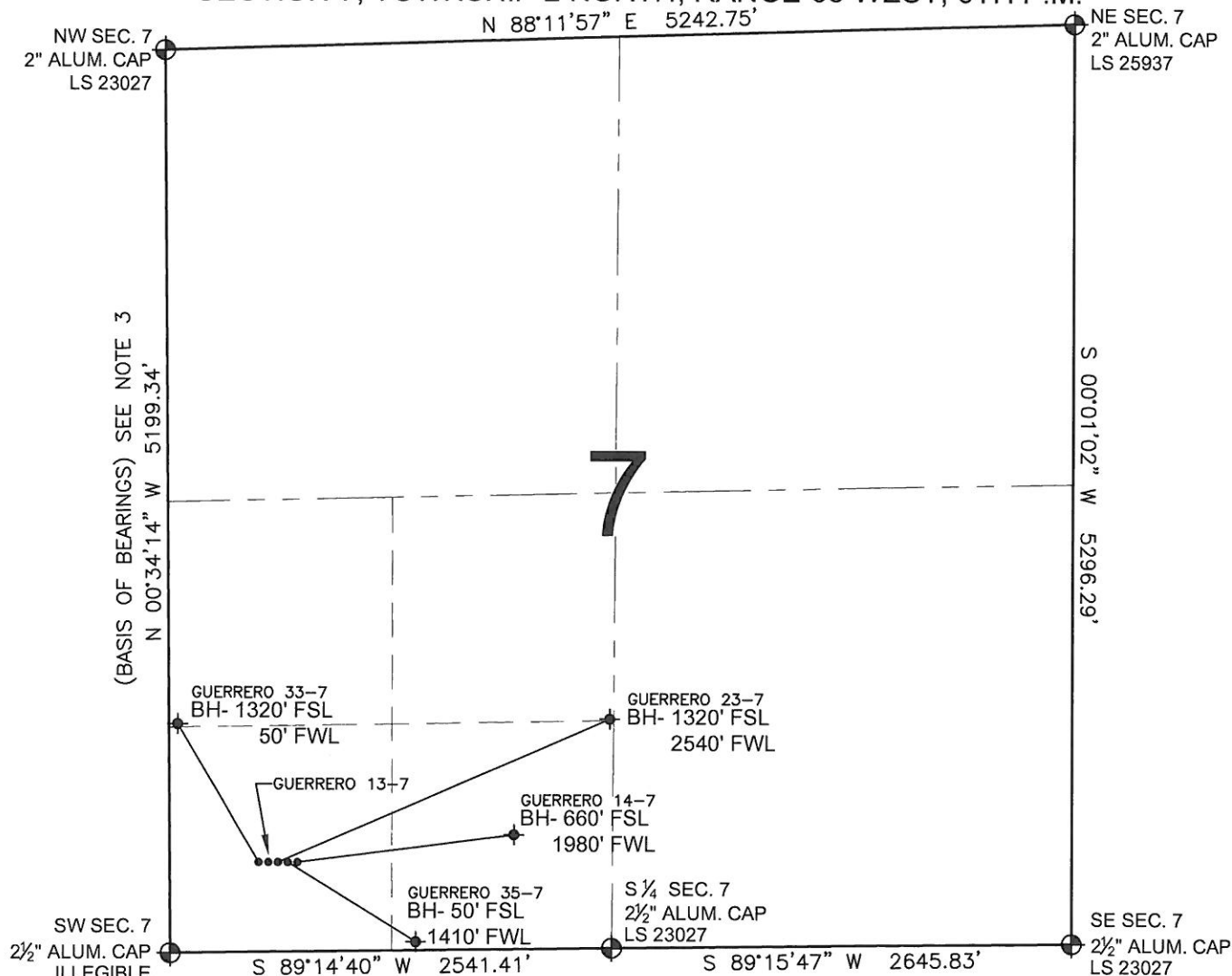


# PAD DRAWING - GUERRERO 13-7 PAD

SECTION 7, TOWNSHIP 2 NORTH, RANGE 65 WEST, 6TH P.M.



## LEGEND

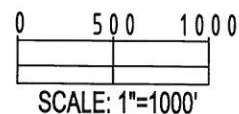
- = EXISTING MONUMENT   
 = BOTTOM HOLE   
 BH= BOTTOM HOLE  
 = PROPOSED WELL   
 = EXISTING WELL

## NOTES:

- THIS SURVEY WAS DONE BY GPS METHODS AND CONFORMS TO THE MINIMUM STANDARDS SET BY THE C.O.G.C.C., RULE NO. 215
- ELEVATIONS SHOWN AT THE WELL HEAD, AS WELL AS HORIZONTAL CONTROL, ARE BASED ON GPS-RTK VALUES DERIVED FROM DOING 2-HOUR STATIC GPS SESSIONS AND REDUCTIONS USING O.P.U.S. SOLUTIONS.  
VERTICAL = NAVD88; HORIZONTAL = NAD83/92
- THE BEARINGS SHOWN HEREON ARE BASED ON GPS OBSERVATIONS BETWEEN THE MONUMENTS SHOWN HEREON AS FOUND ON THE FIELD DATE BELOW.
- DISTANCES SHOWN ARE AT GROUND LEVEL, AS MEASURED IN THE FIELD, WITH TIES TO WELLS MEASURED AT A PERPENDICULAR TO SECTION LINES.

## NOTES:

- GUERRERO 14-7 TO BE AT 519' FSL, 574' FWL.  
 BOTTOM HOLE AT 660' FSL & 1980' FWL.  
 GUERRERO 35-7 TO BE AT 519' FSL, 558' FWL.  
 BOTTOM HOLE AT 50' FSL & 1410' FWL.  
 GUERRERO 23-7 TO BE AT 519' FSL, 542' FWL.  
 BOTTOM HOLE AT 1320' FSL & 2540' FWL.  
 GUERRERO 13-7 TO BE AT 519' FSL, 526' FWL.  
 GUERRERO 33-7 TO BE AT 519' FSL, 510' FWL.  
 BOTTOM HOLE AT 1320' FSL & 50' FWL.



REVISIONS		PREPARED BY:	 <b>PFS</b> Petroleum Field Services, LLC 1801 W. 13th Ave. Denver, CO 80204
INITIAL	DATE		

KERR-MCGEE OIL & GAS ONSHORE LP

FIELD DATE:  
07-29-10

PAD NAME:  
GUERRERO 13-7 PAD

DRAWING DATE:  
08-03-10

SURFACE LOCATION:

BY:  
SMF

WELD COUNTY, COLORADO  
SW 1/4 SW 1/4, SEC. 7, T2N, R65W