

LEGEND

- Proposed Pit
- Stream
- Well
- Wetland
- Water Body
- Proposed Access Road
- Unimproved Road
- Water Disposal

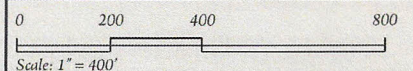
Note:

Disclaimer:

This product is for informational purposes and may not have been prepared for, or be suitable for legal, engineering, or surveying purposes. Users of this information should review or consult the primary data and information sources to ascertain the usability of the information. The maps are distributed "AS-IS" without warranties of any kind, either expressed or implied, including but not limited to warranties of suitability to a particular purpose or use.

McIntyre Flowback Pit #1

Hydrology Map 10.01.2010



Prepared By: ZDP
Prepared For: SG Interests, Ltd.
Contour Interval: 10 ft.



02583154

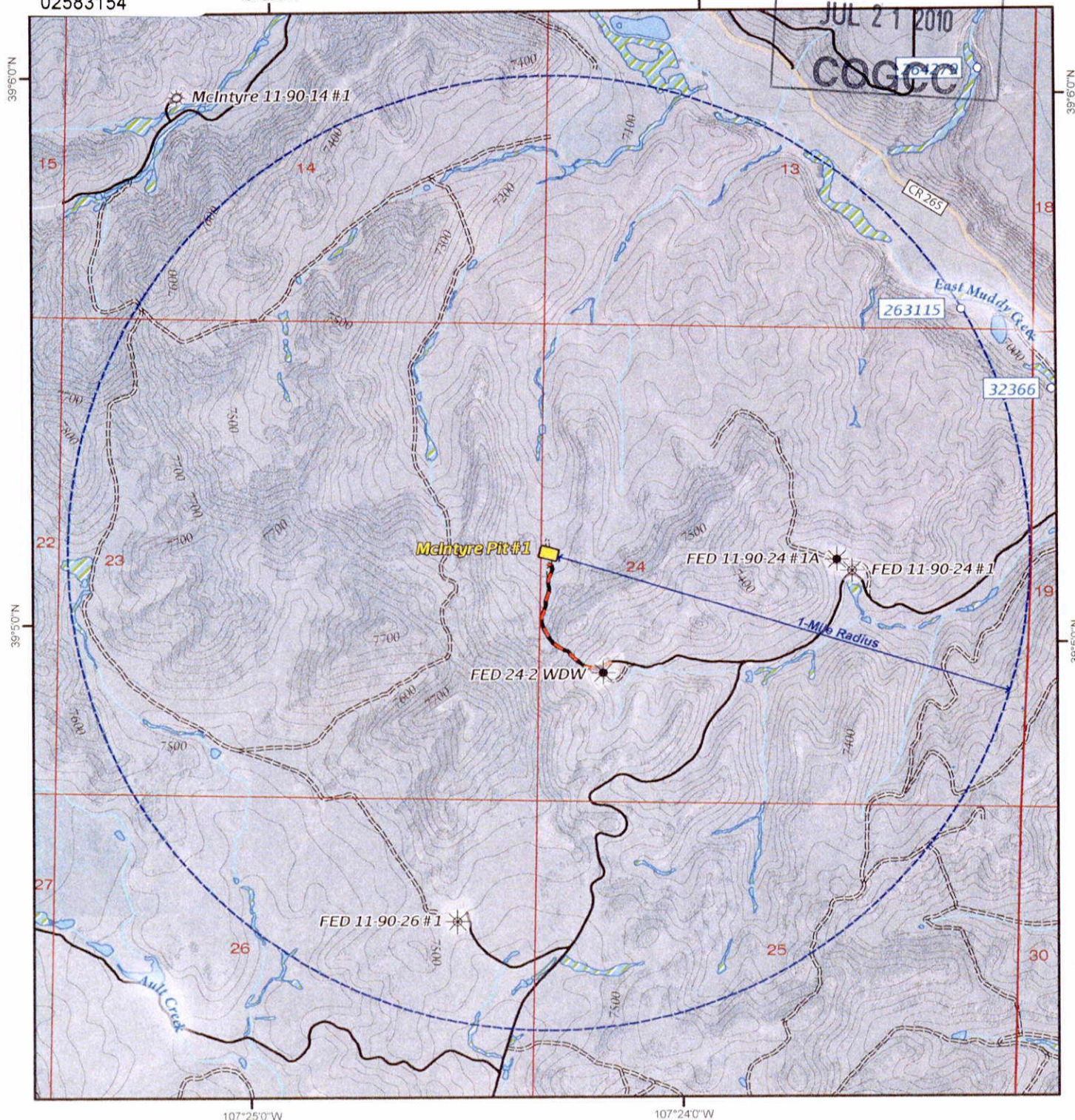
107°25'0"W

107°24'0"W

RECEIVED

JUL 21 2010

COGCC



LEGEND

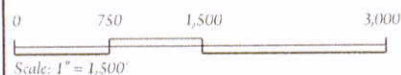
- | | |
|-----------------------------|----------------------|
| Proposed Pit | Stream |
| Gas Well Producing Location | Wetland |
| Gas Well Shut-in Location | Water Body |
| Gas Well Shut-in Location | Proposed Access Road |
| Existing Water Well | County Road |
| | Improved Road |
| | Unimproved Road |

Note:
25-ft contours interpolated from USGS DEM (Digital Elevation Model).

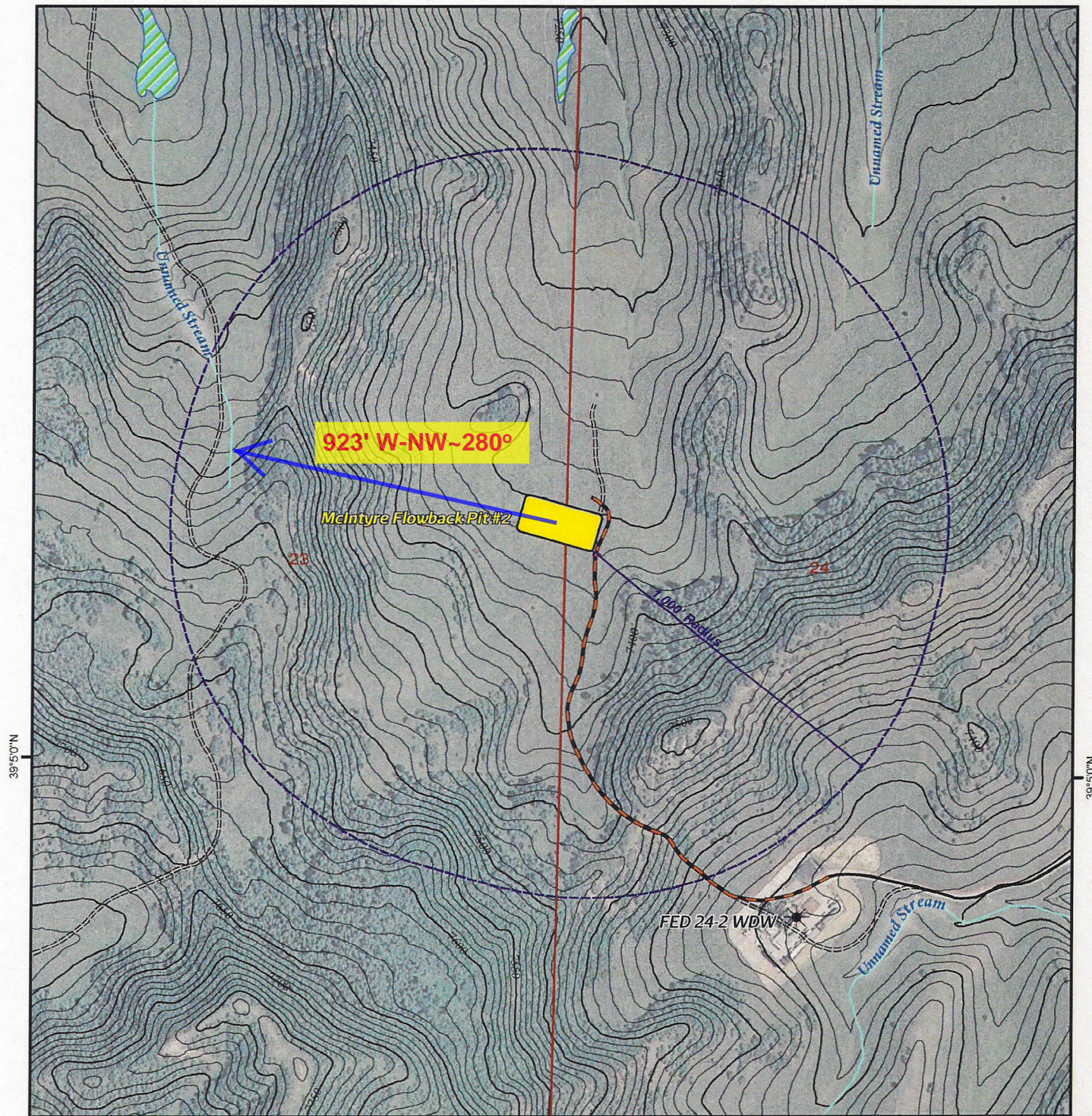
Disclaimer:
This product is for informational purposes and may not have been prepared for, or be suitable for legal, engineering, or surveying purposes. Users of this information should review or consult the primary data and information sources to ascertain the usability of the information. The maps are distributed "AS-IS" without warranties of any kind, either expressed or implied, including but not limited to warranties of suitability to a particular purpose or use.

McIntyre Flowback Pit #1

Hydrology Map
07.15.2010



Prepared By: ZDP
Prepared For: SG Interests, Ltd.
Contour Interval: 25 ft.



LEGEND

Proposed Pit

Well
Water Disposal

Stream
 Wetland
 Water Body

Proposed Access Road
 Unimproved Road

Note:

Disclaimer:

This product is for informational purposes and may not have been prepared for, or be suitable for legal, engineering, or surveying purposes. Users of this information should review or consult the primary data and information sources to ascertain the usability of the information. The maps are distributed "AS-IS" without warranties of any kind, either expressed or implied, including but not limited to warranties of suitability to a particular purpose or use.

McIntyre Flowback Pit #2

Hydrology Map
10.01.2010

0 200 400 800
Scale: 1" = 400'



Prepared By: ZDP
Prepared For: SG Interests, Ltd.
Contour Interval: 10 ft.

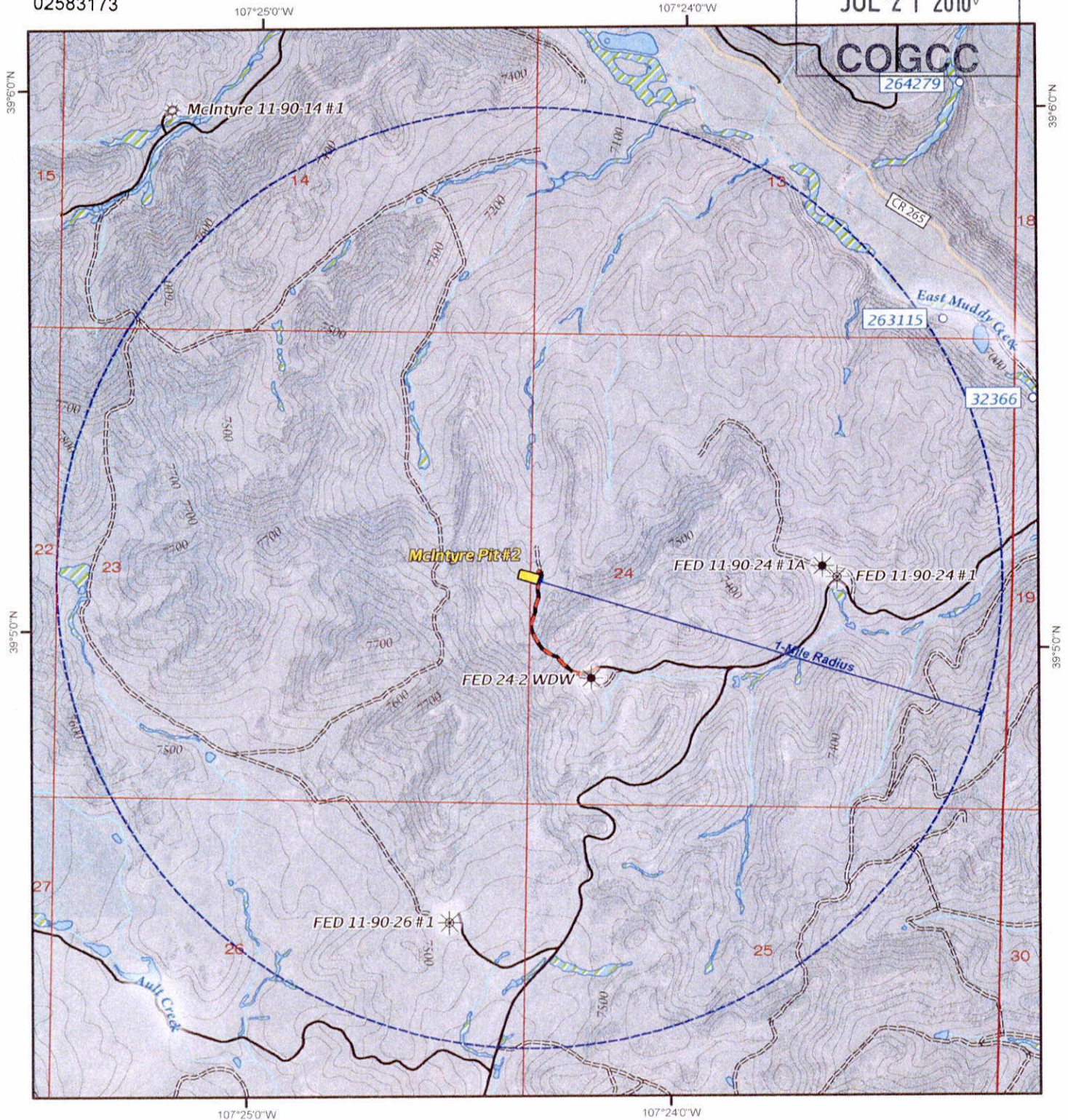


02583173

RECEIVED

Hydrology

JUL 21 2010



LEGEND

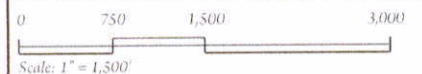
- | | |
|---------------------|----------------------|
| Proposed Pit | Stream |
| Gas Well | Wetland |
| Producing Location | Water Body |
| Gas Well | Proposed Access Road |
| Shut-in Location | County Road |
| Gas Well | Improved Road |
| Shut-in Location | Unimproved Road |
| Existing Water Well | |

Note:
25-ft contours interpolated from USGS DEM (Digital Elevation Model).

Disclaimer:
This product is for informational purposes and may not have been prepared for, or be suitable for legal, engineering, or surveying purposes. Users of this information should review or consult the primary data and information sources to ascertain the usability of the information. The maps are distributed "AS-IS" without warranties of any kind, either expressed or implied, including but not limited to warranties of suitability to a particular purpose or use.

McIntyre Flowback Pit #2

Hydrology Map
07.15.2010



Prepared By: ZDP
Prepared For: SG Interests, Ltd.
Contour Interval: 25 ft